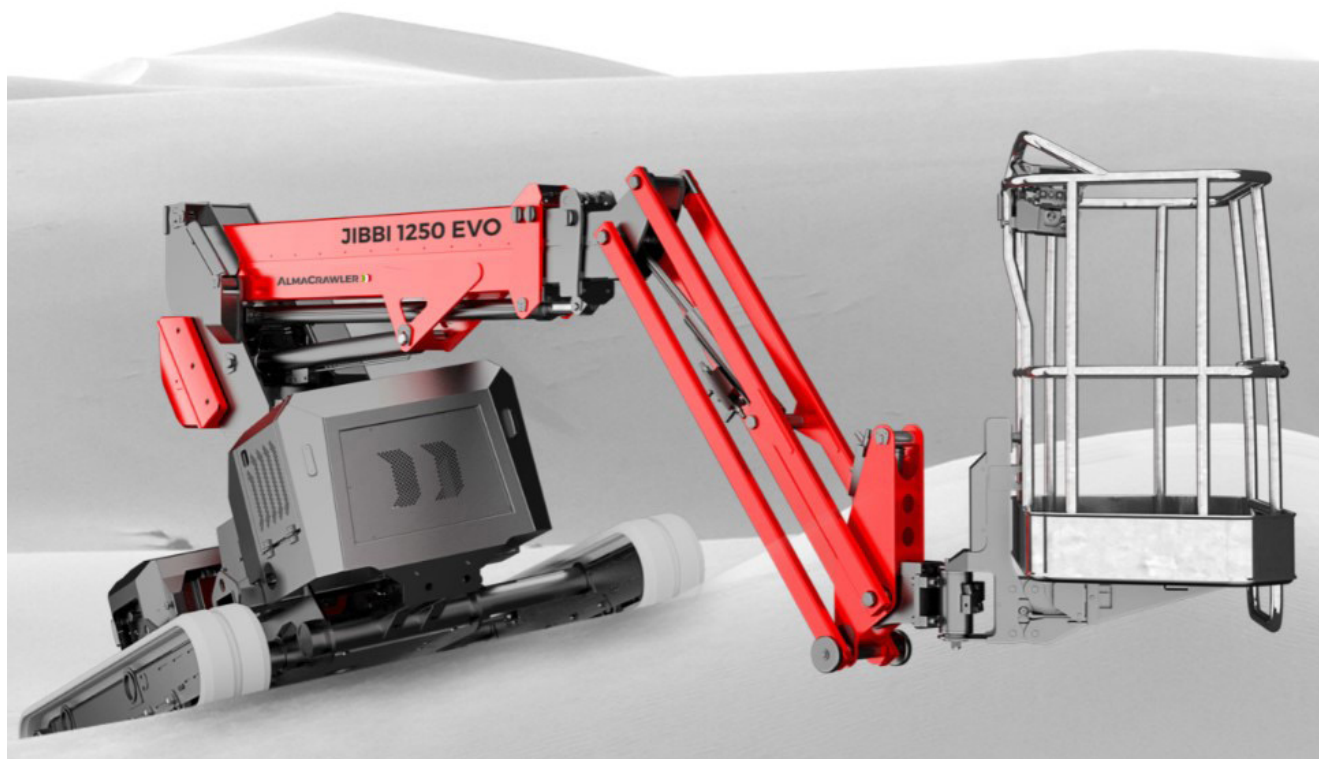


ALMACRAWLER



JIBBI 1250 EVO



CATALOGO PARTI DI RICAMBIO



CATALOGUE DES PIECES DE RECHANGE



ERSATZTEILKATALOG



SPARE PARTS CATALOGUE



CATALOGO DE PIEZAS DE REPUESTO



Cod.: 004653-0010-00

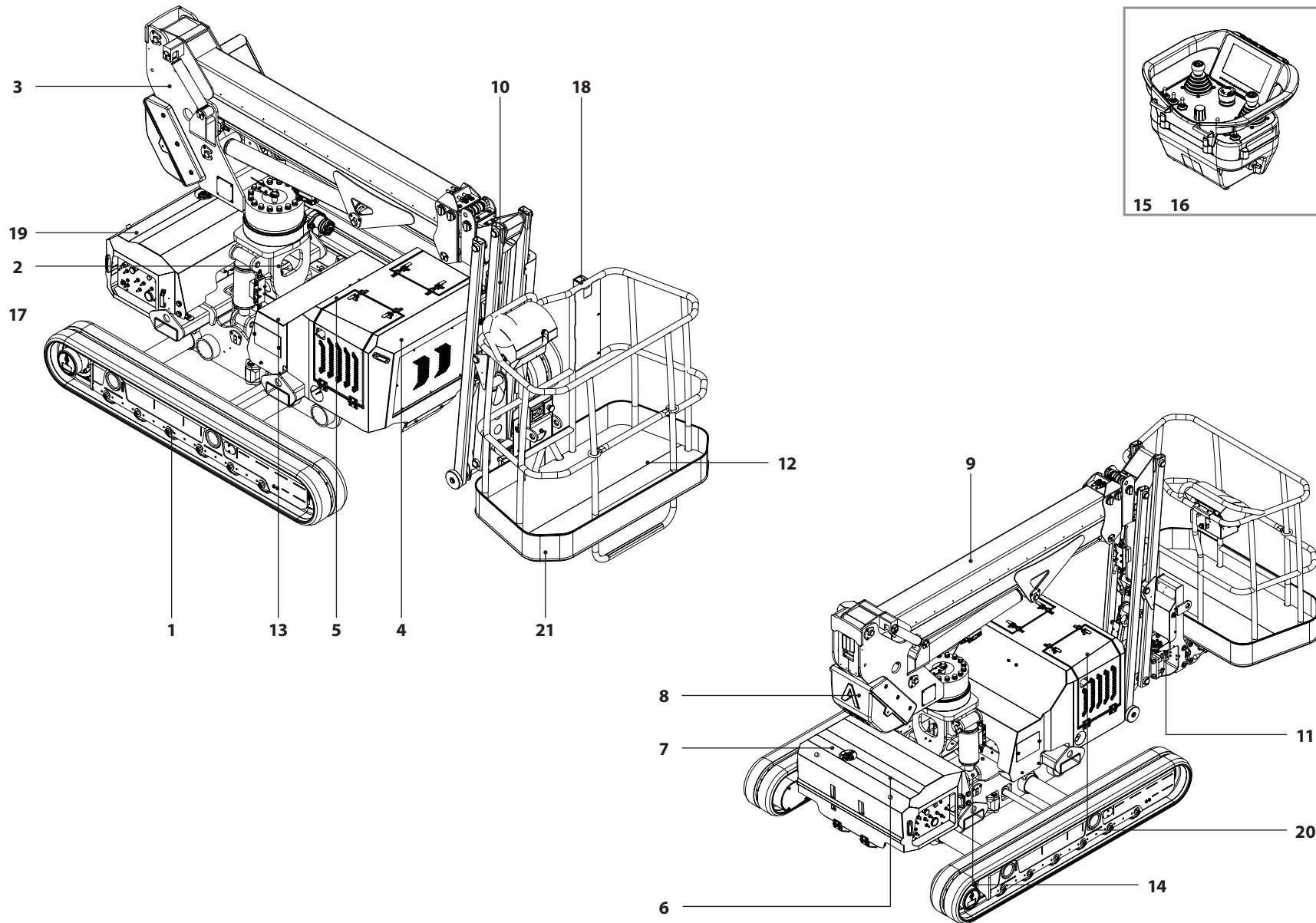
Ed.: 01/2019 del 07/01/2019

004653-1010-00

Assieme JIBBI 1250

TAB.	S.Groupe	REV.	Pag.
1	-	0	1/1

ALMACRAWLER 

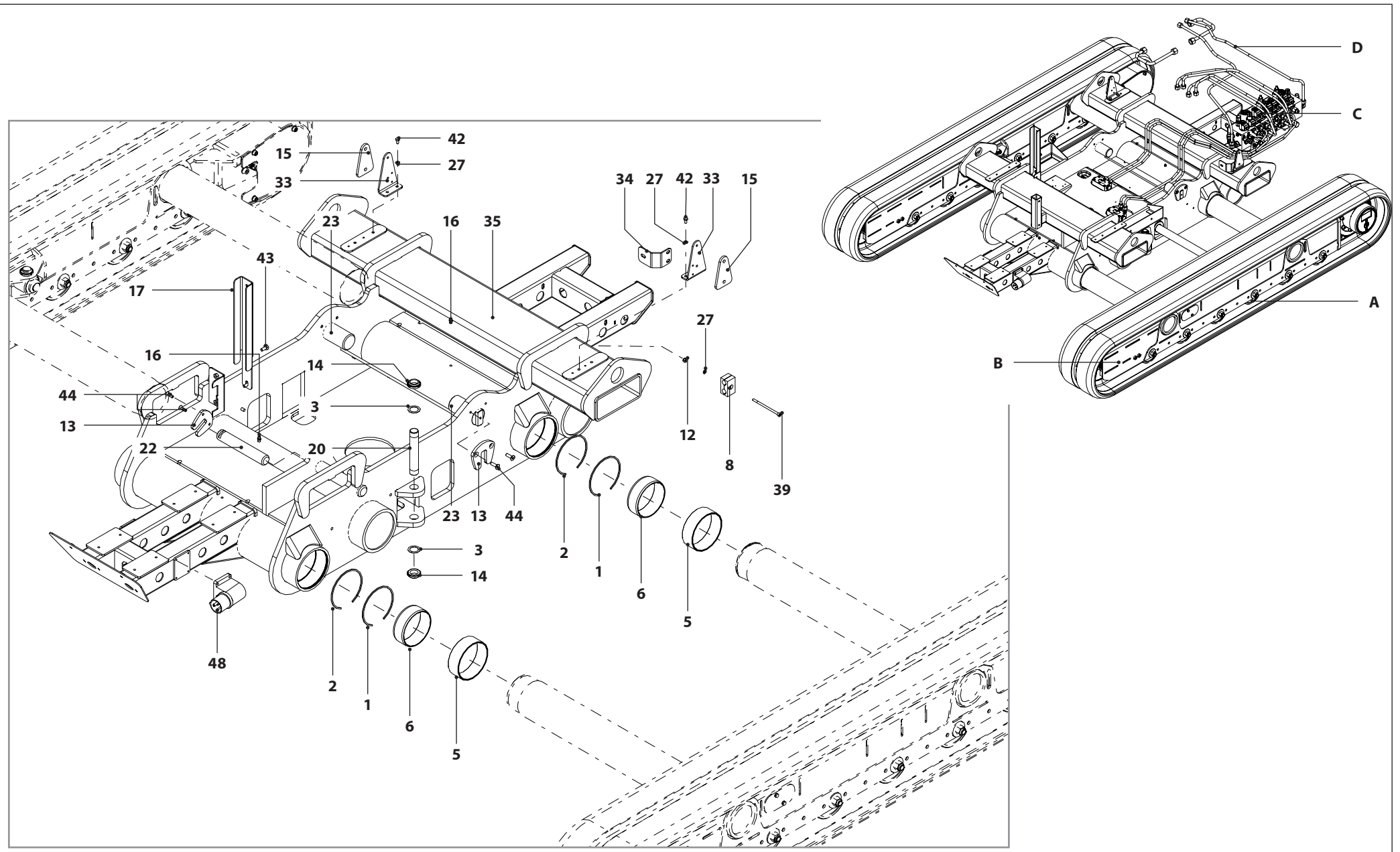



004654-1010-00

Assieme carro JIBBI 1250

TAB.	S.Groupe	REV.	Pag.
2	-	0	1/7

ALMACRAWLER 



004654-1010-00				Assieme carro JIBBI 1250	
TAB.	S.Groupe	REV.	Pag.		
2	-	0	1/7		

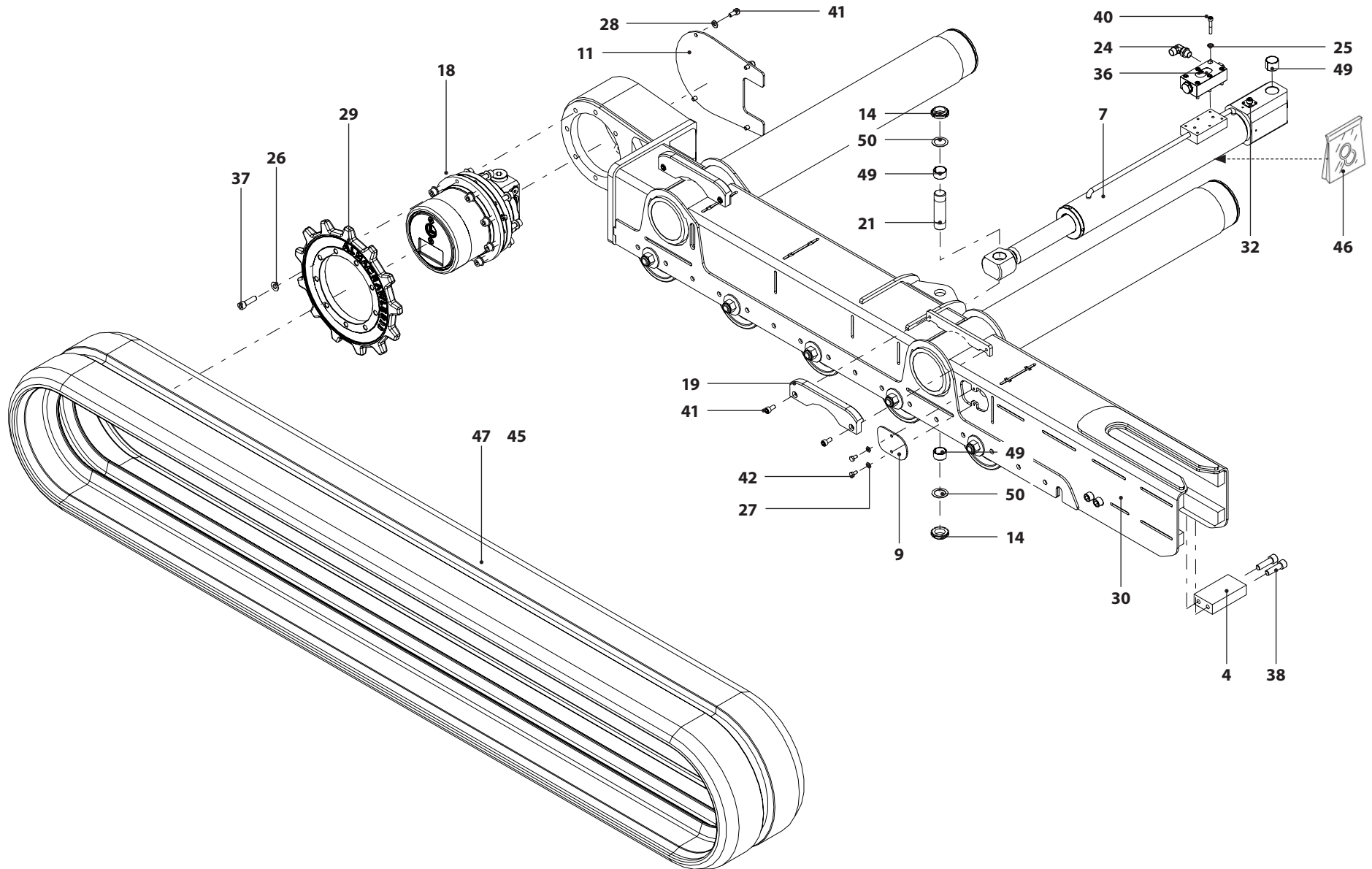
POS.	CODE	IT	DESCRIZIONE	FR	DESIGNATION	DE	BENENNUNG	UK	DESCRIPTION	ES	DENOMINACIONES
A	005082-1010-00		RULLO								
B	005083-1010-00		CILINDRO TENDICINGOLO								
C	005007-1010-00		ASSIEME DISTRIBUTORE								
D	004962-1010-00		ASSIEME TUBI RIGIDI								
1	005137-3020		Anello d'arresto								
2	005138-3020		Anello d'arresto								
3	002510-3025		Anello di spessoramento								
4	005147-1015		Antiscingolo								
5	005141-2010		Boccola	Douille		Buchse		Bushing		Casquillo	
6	005142-2010		Boccola	Douille		Buchse		Bushing		Casquillo	
7	004712-3040		Cilindro	Cylindre		Zylinder		Cylinder		Cilindro	
8	000553-3040		Collare								
9	005145-2010-VER9005		Coperchio corto								
11	005143-2010-VER9005		Coperchio	Couvercle		Deckel		Cover		Tapa	
12	001052-3020		Dado	Ecrou		Mutter		Nut		Tuerca	
13	004722-2010-VER-9005		Fermaperno								
14	000402-3025		Ghiera	Frette		Nutmutter		Ring nut		Virola	
15	005262-2010		Guarnizione	Joint		Dichtung		Seal		Junta	
16	000151-3020		Ingrassatore								
17	005249-2010		Lamiera	Tole		Blech		Plate		Lamina	
18	004911-3040		Motoriduttore	Motor-reducteur		Getriebemotor		Gear motor		Moto-reductor	
19	005144-2010		Pattino	Patin		Gleitplatte		Sliding block		Patin	
20	005250-2010		Perno	Axe		Bolzen		Pin		Perno	
21	005251-2010		Perno	Axe		Bolzen		Pin		Perno	
22	004732-2010		Perno	Axe		Bolzen		Pin		Perno	
23	004755-2010		Perno	Axe		Bolzen		Pin		Perno	
24	002906-3040		Raccordo	Raccord		Stutzen		Fitting		Racor	
25	005136-3020		Rondella	Rondelle		Unterlegscheibe		Washer		Arandela	
26	000213-3020		Rondella	Rondelle		Unterlegscheibe		Washer		Arandela	
27	000216-3020		Rondella	Rondelle		Unterlegscheibe		Washer		Arandela	
28	000191-3020		Rondella	Rondelle		Unterlegscheibe		Washer		Arandela	
29	005070-1015-VER9005		Ruota motrice								
30	005151-1015-VER9005		Semicarro destro								
32	004907-3030		Sensore	Capteur		Sensor		Sensor		Sensor	
33	005263-2010		Staffa	Etrier		Bügel		Bracket		Estribo	

004654-1010-00

Assieme carro JIBBI 1250 - Semicarro DX

ALMACRAWLER 

TAB.	S.Groupe	REV.	Pag.
3	005150	0	2/7

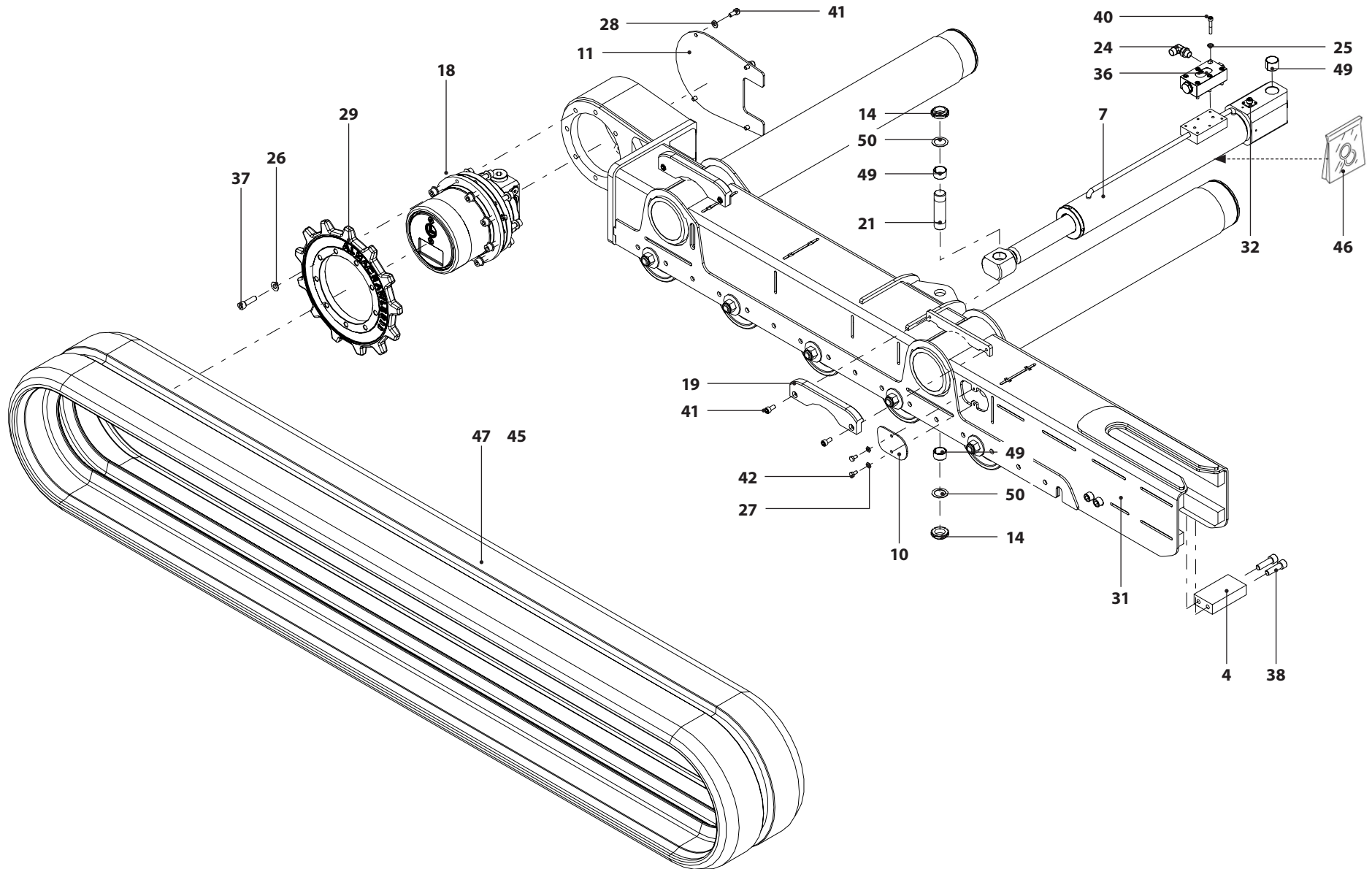


004654-1010-00

Assieme carro JIBBI 1250 - Semicarro SX

ALMACRAWLER 

TAB.	S.Groupe	REV.	Pag.
4	005151	0	3/7



004654-1010-00				Assieme carro JIBBI 1250 - Semicarro SX	
TAB.	S.Groupe	REV.	Pag.		
4	005151	0	3/7		

POS.	CODE	IT	DESCRIZIONE	FR	DESIGNATION	DE	BENENNUNG	UK	DESCRIPTION	ES	DENOMINACIONES
4	005147-1015		Antiscingolo								
7	004712-3040		Cilindro		Cylindre		Zylinder		Cylinder		Cilindro
10	005146-2010-VER9005		Coperchio lungo								
11	005143-2010-VER9005		Coperchio		Couvercle		Deckel		Cover		Tapa
14	000402-3025		Ghiera		Frette		Nutmutter		Ring nut		Virola
18	004911-3040		Motoriduttore		Motor-reducteur		Getriebemotor		Gear motor		Moto-reductor
19	005144-2010		Pattino		Patin		Gleitplatte		Sliding block		Patin
21	005251-2010		Perno		Axe		Bolzen		Pin		Perno
24	002906-3040		Raccordo		Raccord		Stutzen		Fitting		Racor
25	005136-3020		Rondella		Rondelle		Unterlegscheibe		Washer		Arandela
26	000213-3020		Rondella		Rondelle		Unterlegscheibe		Washer		Arandela
27	000216-3020		Rondella		Rondelle		Unterlegscheibe		Washer		Arandela
28	000191-3020		Rondella		Rondelle		Unterlegscheibe		Washer		Arandela
29	005070-1015-VER9005		Ruota motrice								
31	005150-1015-VER9005		Semicarro sinistro								
32	004907-3030		Sensore		Capteur		Sensor		Sensor		Sensor
36	001833-3040-VI		Valvola		Soupape		Ventil		Valve		Valvula
37	005106-3020		Vite		Vis		Schraube		Screw		Tornillo
38	005139-3020		Vite		Vis		Schraube		Screw		Tornillo
40	000557-3020		Vite		Vis		Schraube		Screw		Tornillo
41	000596-3020		Vite		Vis		Schraube		Screw		Tornillo
42	000342-3020		Vite		Vis		Schraube		Screw		Tornillo
45	003010-3025		Cingolo antitraccia								
46			Guarnizioni								
47	003011-3025		Cingolo nero								
49	003203-3025		Boccola								
50	002510-3025		Rondella		Rondelle		Unterlegscheibe		Washer		Arandela

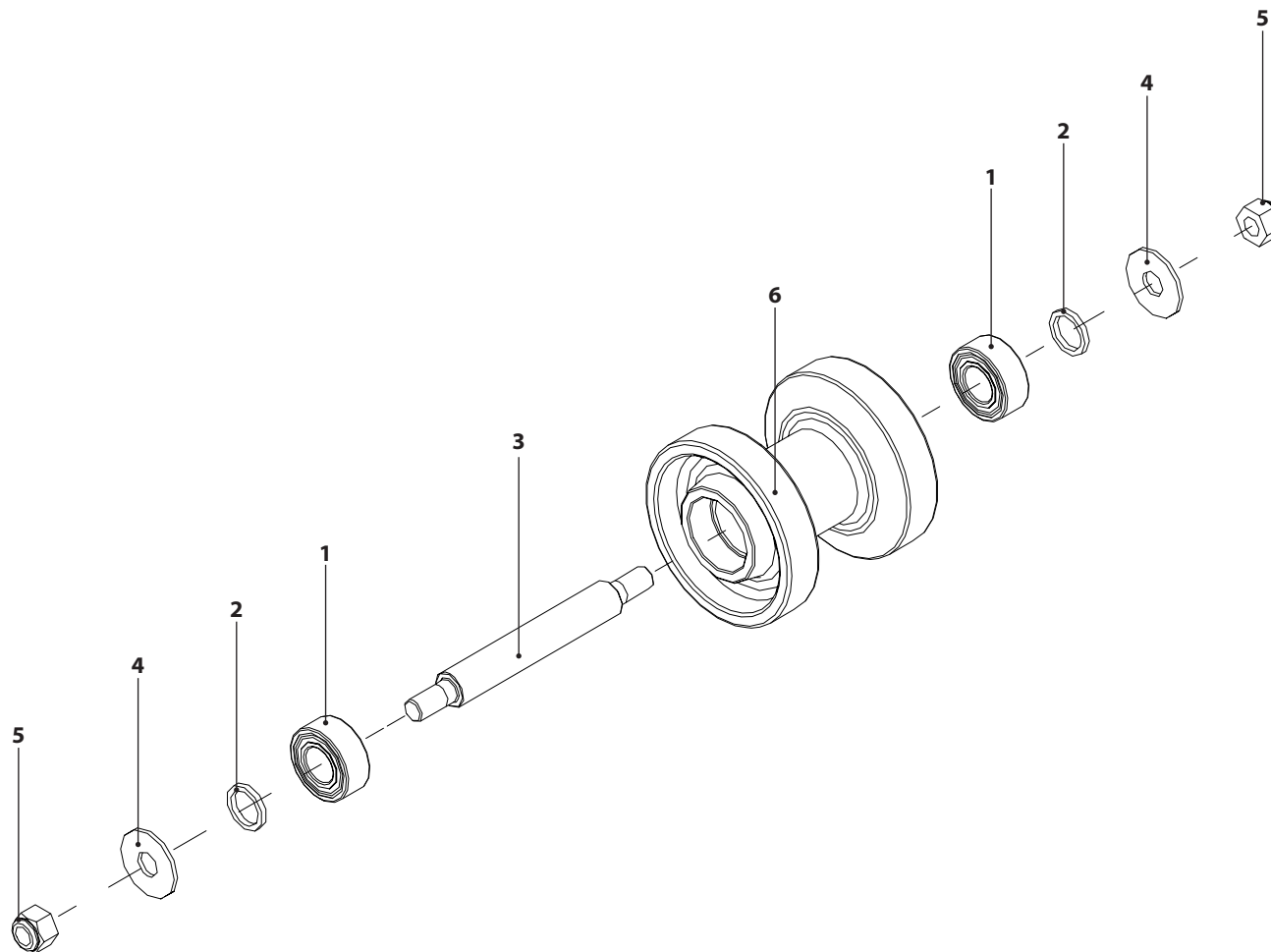
004654-1010-00

Assieme carro JIBBI 1250 - Rullo (A)



TAB.	S.Groupe	REV.	Pag.
------	----------	------	------

5	005082	0	5/7
---	--------	---	-----



004654-1010-00

Assieme carro JIBBI 1250 - Tendicingolo (B)

ALMACRAWLER 

TAB.

S.Groupe

REV.

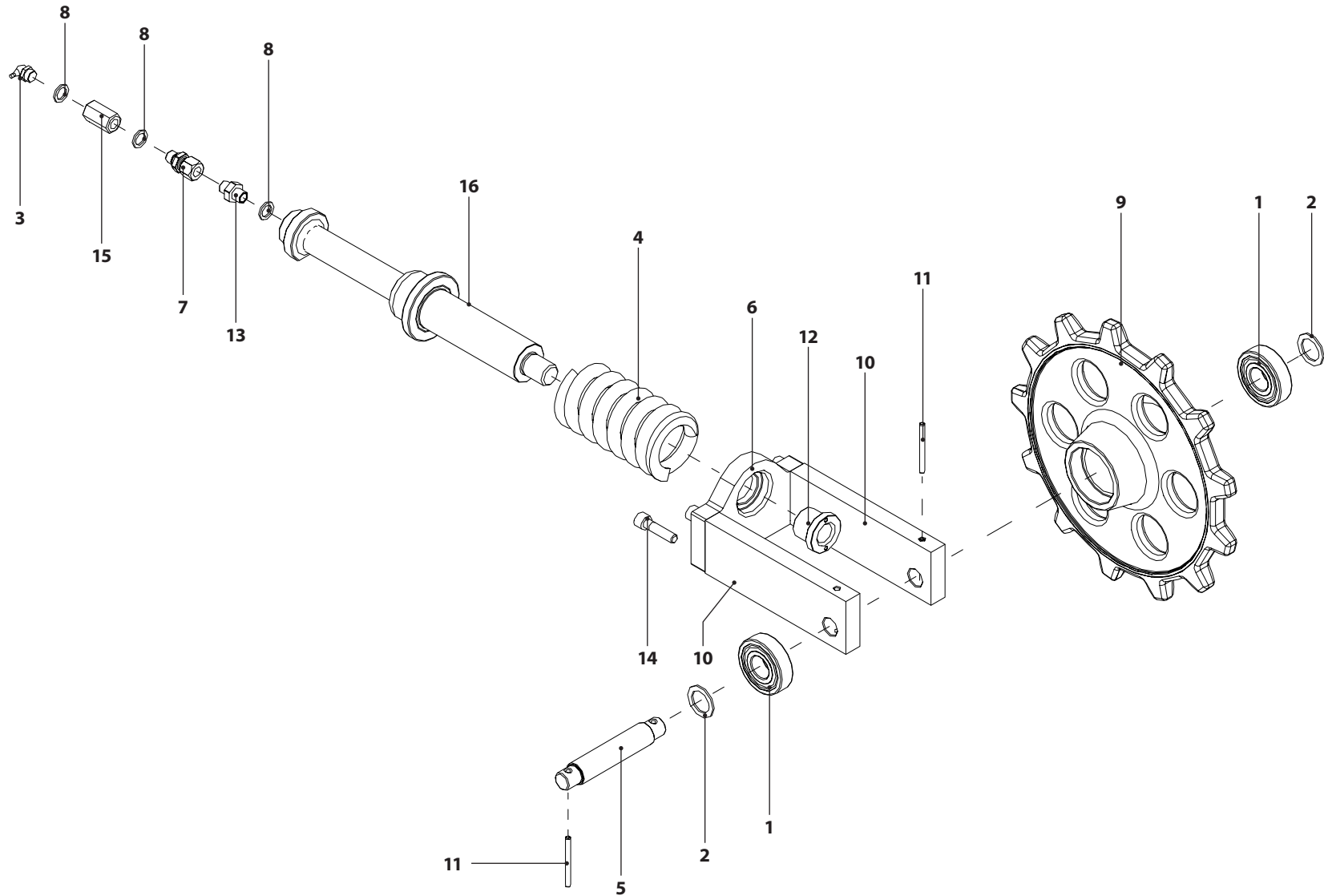
Pag.

6

005083

0

6/7

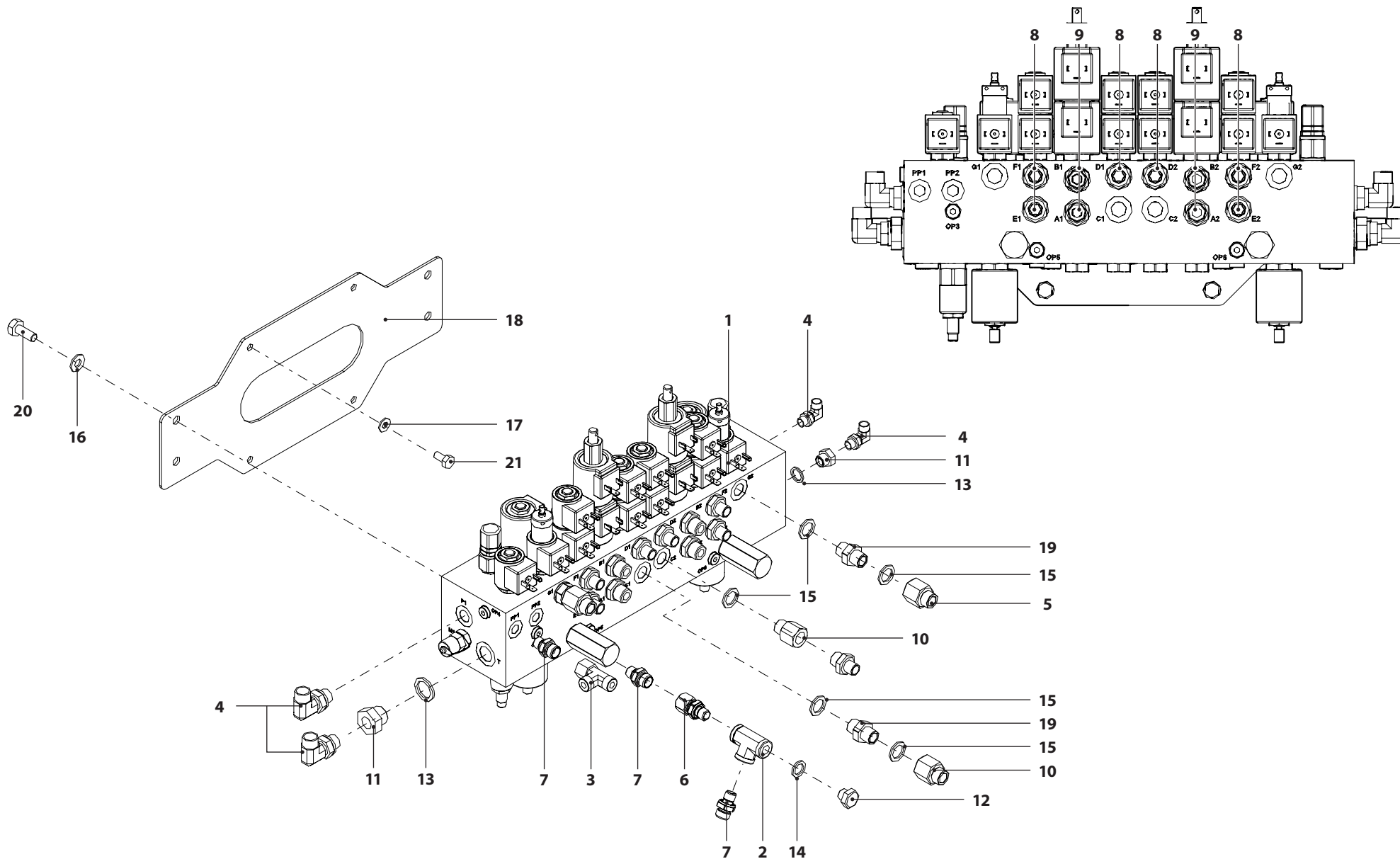


004654-1010-00

Assieme carro JIBBI 1250 - Distributore (C)



TAB.	S.Groupe	REV.	Pag.
5	005007	0	4/7

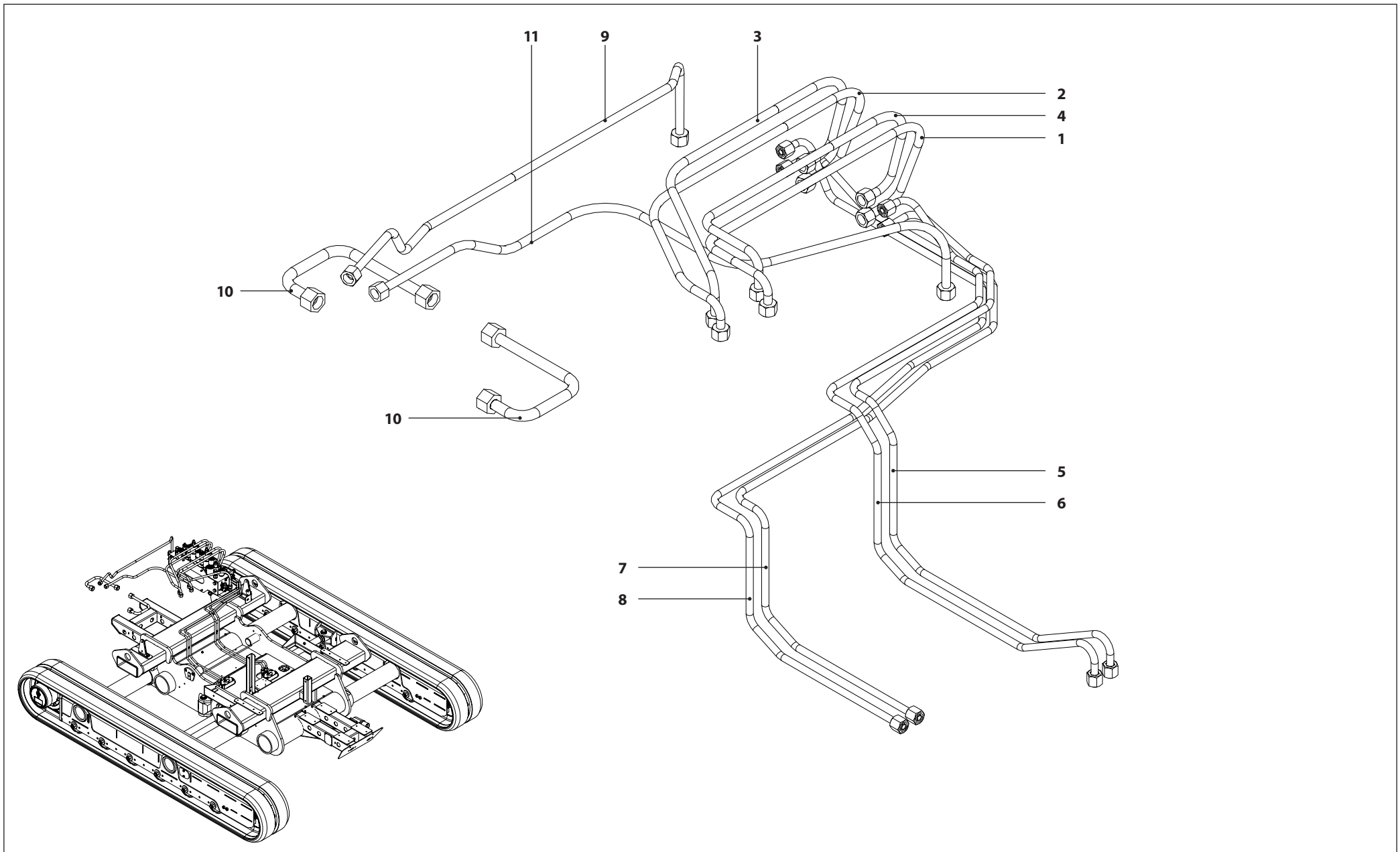


004654-1010-00

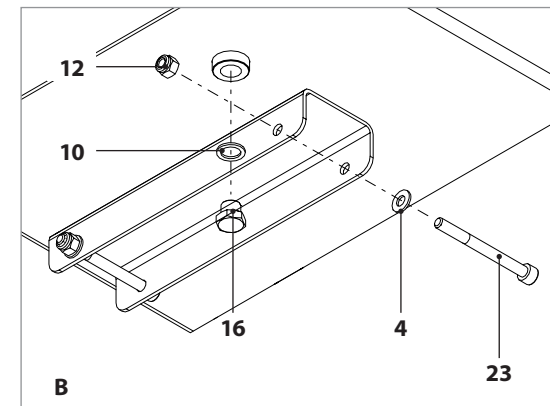
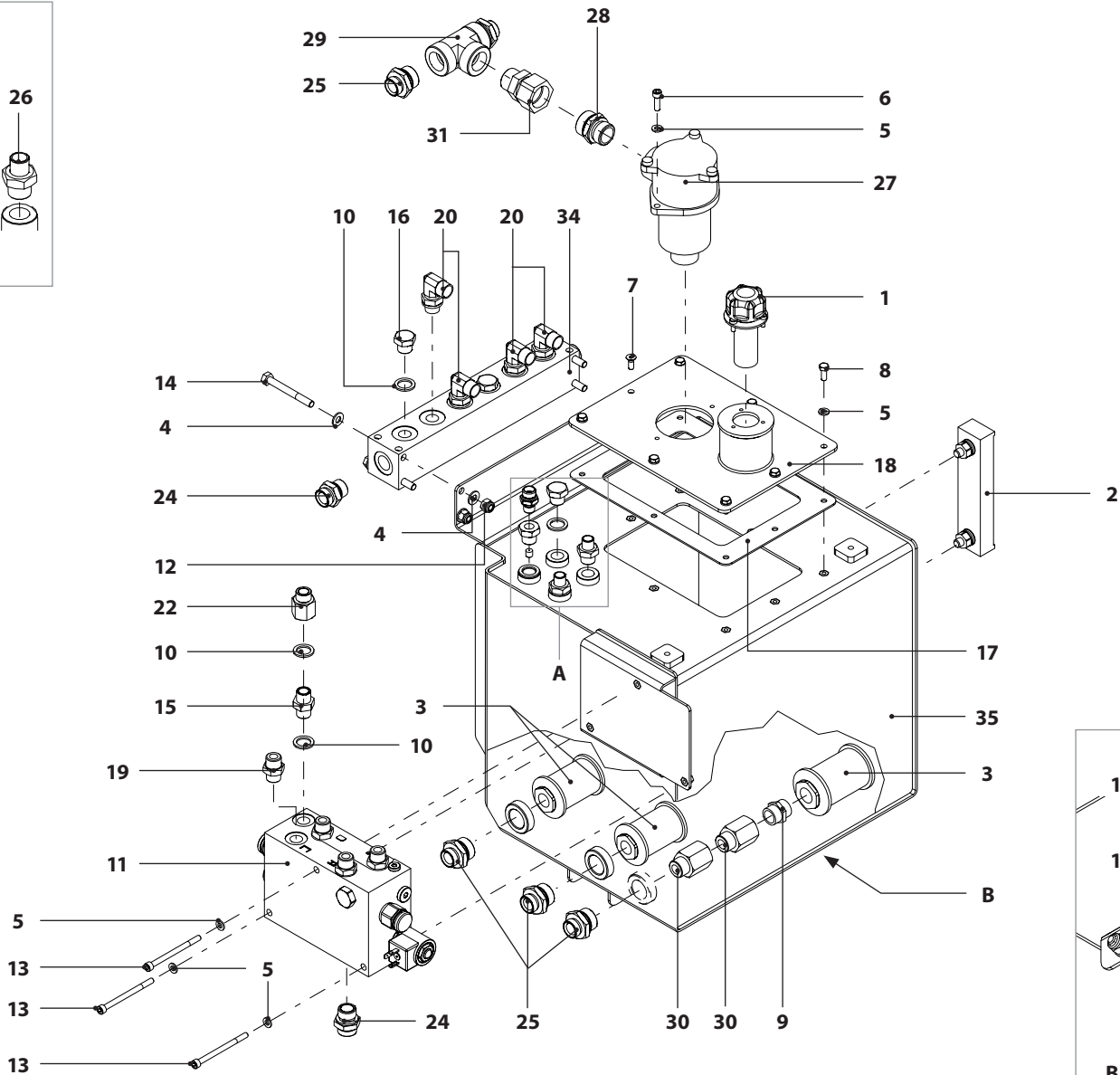
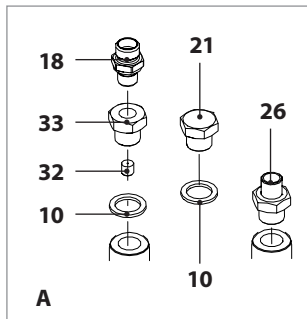
Assieme carro JIBBI 1250 - Tubazioni (D)

ALMACRAWLER 

TAB.	S.Groupe	REV.	Pag.
8	004962	0	7/7



TAB.	S.Groupe	REV.	Pag.
9	-	0	1/1



004659-1010-00				Assieme serbatoio olio	
TAB.	S.Groupe	REV.	Pag.		
9	-	0	1/1		

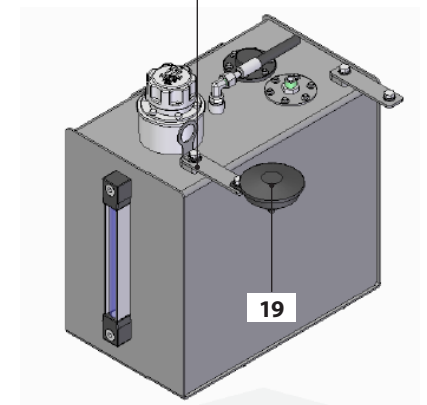
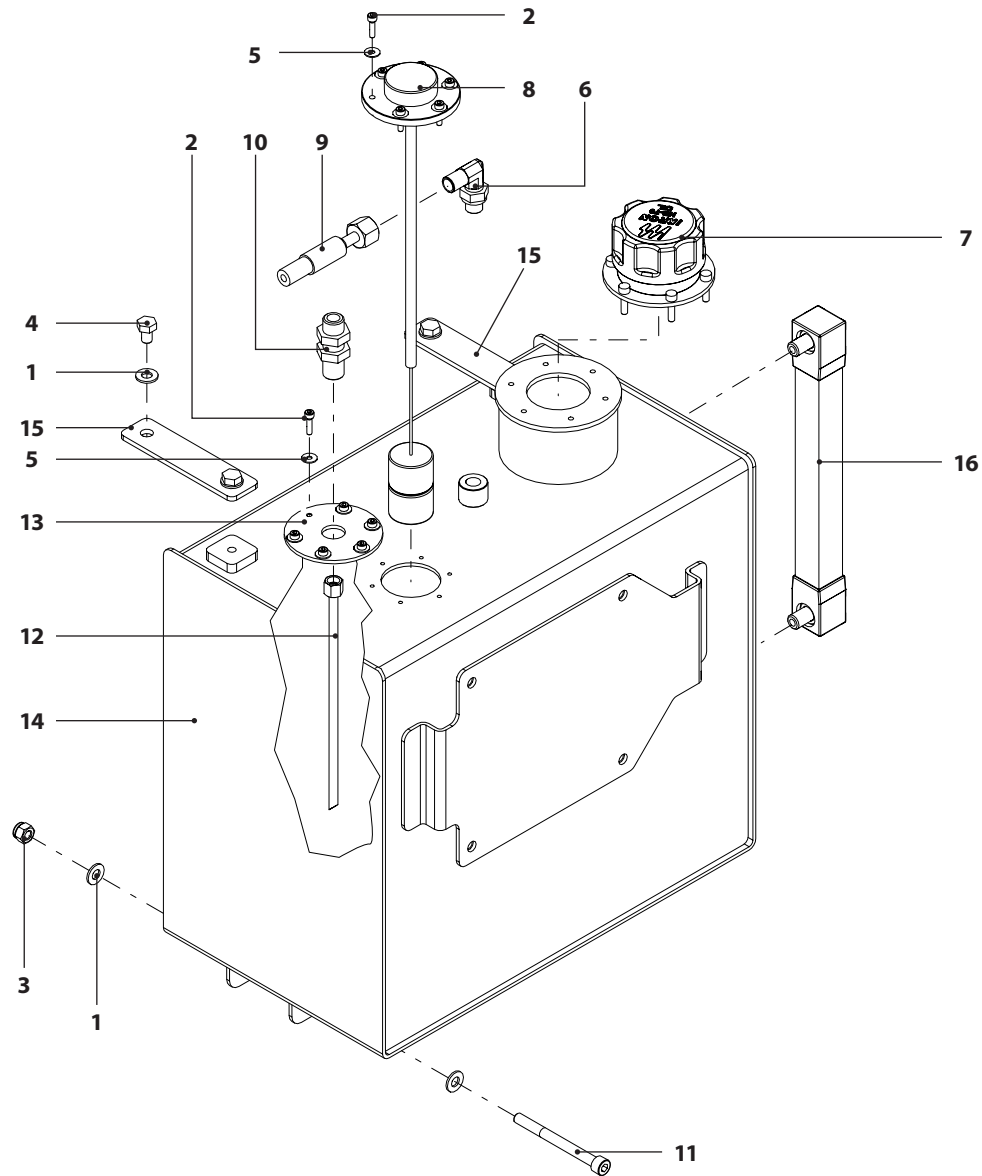
POS.	CODE	IT DESCRIZIONE	FR DESIGNATION	DE BENENNUNG	UK DESCRIPTION	ES DENOMINACIONES
1	000130-3040	Tappo	Bouchon	Verschlussdeckel	Plug	Tapon
2	000131-3040	Livello visivo				
3	000149-3040	Filtro	Filtre	Filter	Filter	Filtro
4	000191-3020	Rondella	Rondelle	Unterlegscheibe	Washer	Arandela
5	000216-3020	Rondella	Rondelle	Unterlegscheibe	Washer	Arandela
6	000217-3020	Vite	Vis	Schraube	Screw	Tornillo
7	000237-3020	Vite	Vis	Schraube	Screw	Tornillo
8	000250-3020	Vite	Vis	Schraube	Screw	Tornillo
9	000434-3040	Raccordo	Raccord	Stutzen	Fitting	Racor
10	000465-3040	Rondella	Rondelle	Unterlegscheibe	Washer	Arandela
11	000515-3040	Gruppo idraulico				
12	000818-3020	Dado	Ecrou	Mutter	Nut	Tuerca
13	000953-3020	Vite	Vis	Schraube	Screw	Tornillo
14	001069-3020	Vite	Vis	Schraube	Screw	Tornillo
15	001085-3040	Valvola				
16	001261-3040	Raccordo tappo				
17	001669-3040	Guarnizione	Joint	Dichtung	Seal	Junta
18	001755-1015	Coperchio	Couvercle	Deckel	Cover	Tapa
19	002900-3040	Raccordo	Raccord	Stutzen	Fitting	Racor
20	002902-3040	Raccordo	Raccord	Stutzen	Fitting	Racor
21	002904-3040	Raccordo	Raccord	Stutzen	Fitting	Racor
22	002905-3040	Raccordo	Raccord	Stutzen	Fitting	Racor
23	003222-3020	Vite	Vis	Schraube	Screw	Tornillo
24	003295-3040	Raccordo	Raccord	Stutzen	Fitting	Racor
25	003300-3040	Raccordo	Raccord	Stutzen	Fitting	Racor
26	003334-3040	Raccordo	Raccord	Stutzen	Fitting	Racor
27	003491-3040	Filtro	Filtre	Filter	Filter	Filtro
28	003494-3040	Raccordo	Raccord	Stutzen	Fitting	Racor
29	003508-3040	Raccordo	Raccord	Stutzen	Fitting	Racor
30	003509-3040	Raccordo	Raccord	Stutzen	Fitting	Racor
31	003886-3040	Raccordo	Raccord	Stutzen	Fitting	Racor
32	004050-3040	Grano				
33	004616-3040	Raccordo	Raccord	Stutzen	Fitting	Racor
34	004963-3040	Collettore	Collecteur	Krümmer	Manifold	Colector
35	005224-1015	Serbatoio	Reservoir	Tank	Tank	Deposito

004660-1010-00

Assieme serbatoio diesel

ALMACRAWLER 

TAB.	S.Groupe	REV.	Pag.
10	-	0	1/1

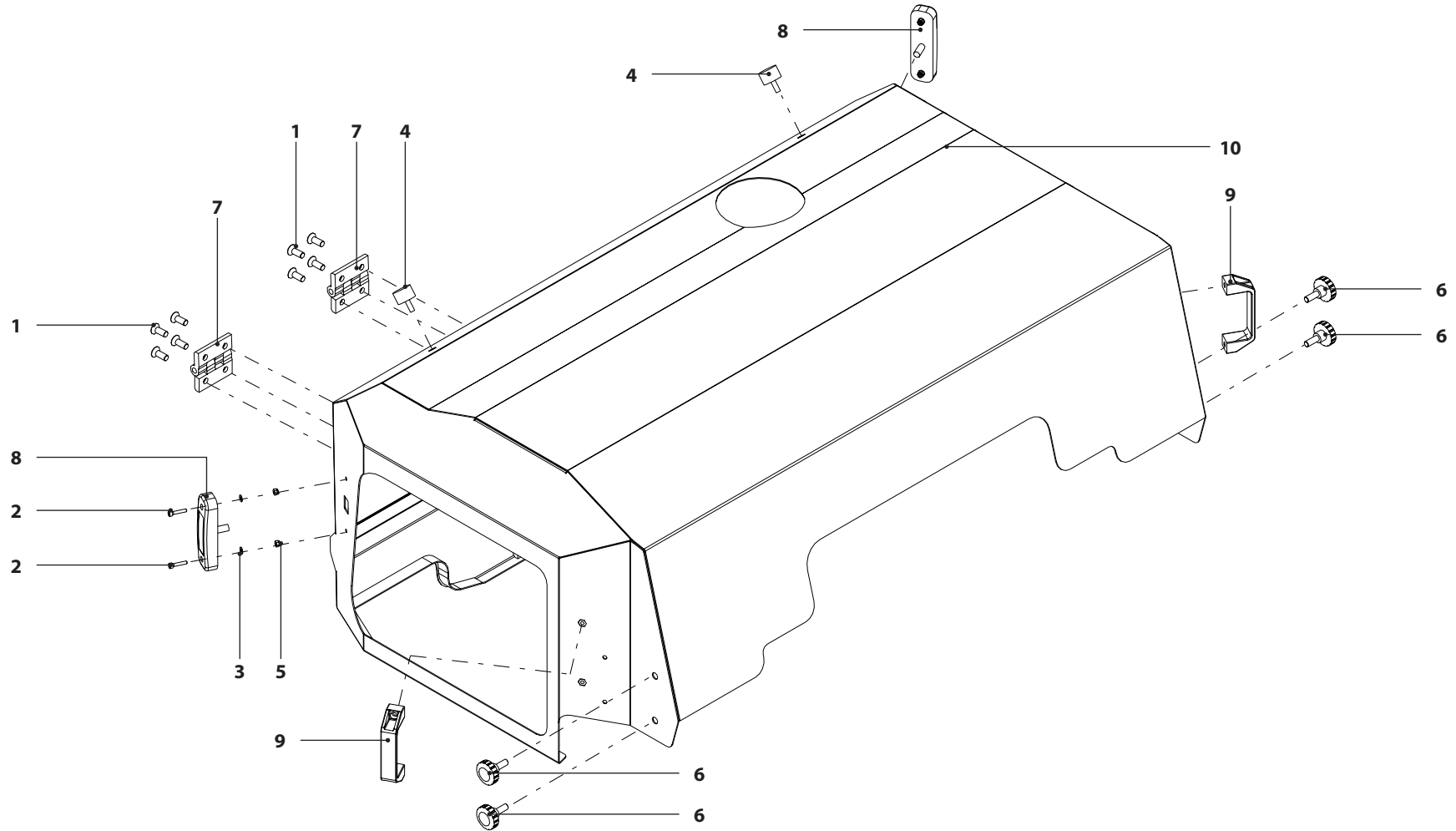


005226-1010-00

Assieme cofano serbatoi

ALMACRAWLER 

TAB.	S.Groupe	REV.	Pag.
11	-	0	1/1

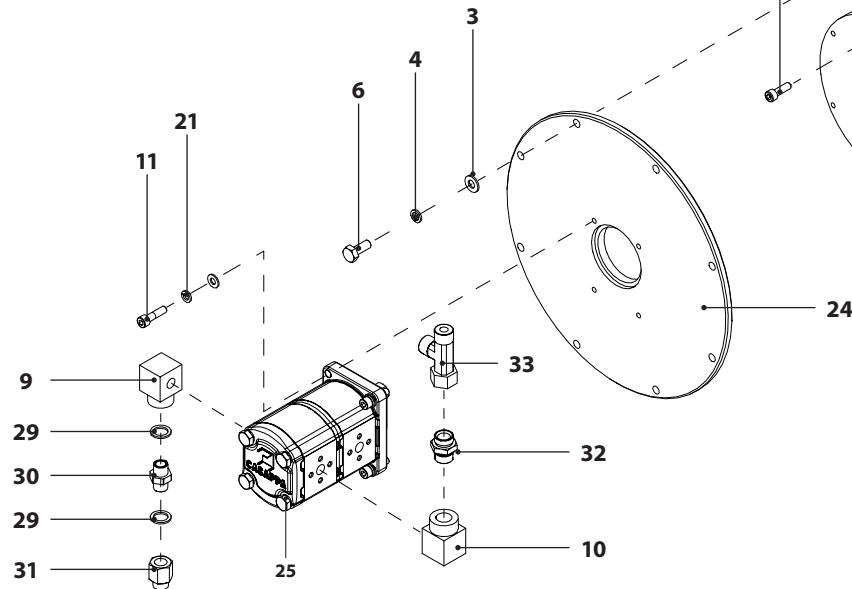
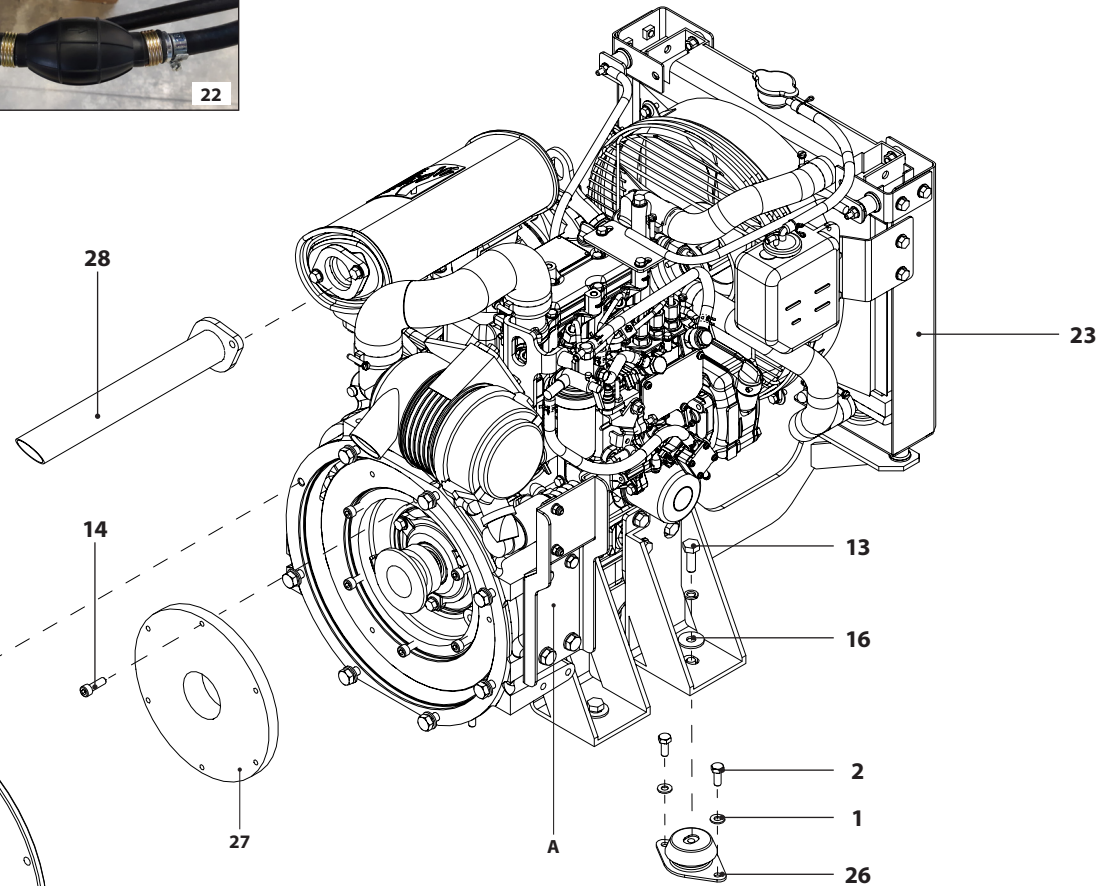
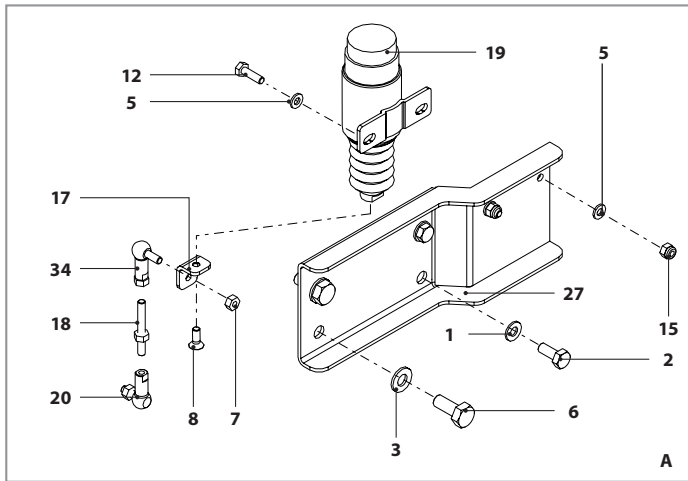


004657-1010-00

Assieme motore Yanmar



TAB.	S.Groupe	REV.	Pag.
12	-	0	1/1



004657-1010-00				Assieme motore Yanmar	
TAB.	S.Groupe	REV.	Pag.		
12	-	0	1/1		

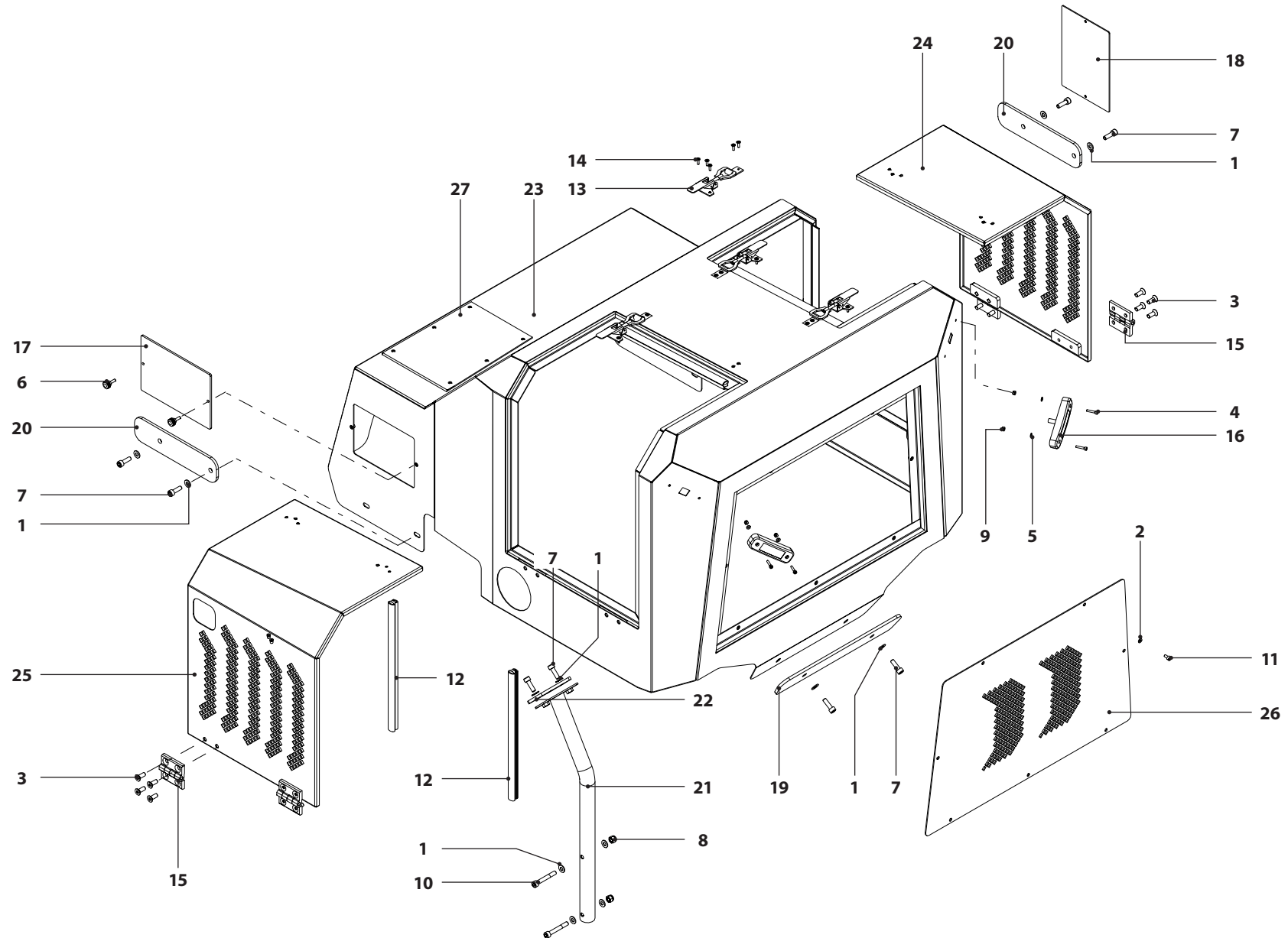
POS.	CODE	IT DESCRIZIONE	FR DESIGNATION	DE BENENNUNG	UK DESCRIPTION	ES DENOMINACIONES
1	000191-3020	Rondella	Rondelle	Unterlegscheibe	Washer	Arandela
2	000193-3020	Vite				
3	000213-3020	Rondella	Rondelle	Unterlegscheibe	Washer	Arandela
4	000214-3020	Rondella	Rondelle	Unterlegscheibe	Washer	Arandela
5	000216-3020	Rondella	Rondelle	Unterlegscheibe	Washer	Arandela
6	000221-3020	Vite				
7	000236-3020	Dado esagonale				
8	000237-3020	Vite				
9	000449-3040	Raccordo	Raccord	Stutzen	Fitting	Racor
10	000450-3040	Raccordo	Raccord	Stutzen	Fitting	Racor
11	000558-3020	Vite				
12	000748-3020	Vite				
13	000749-3020	Vite				
14	000772-3020	Vite				
15	001052-3020	Dado esagonale				
16	001579-3020	Rondella piana				
17	002408-2010	Angolare				
18	002409-3020	Barra filettata	Barre Filetee	Gewindestange	Threaded Bar	Barra Roscada
19	002486-3030	Elettroacceleratore				
20	002537-3010	Snodo	Articulation	Gelenk	Articulation	Articulacion
21	002701-3020	Rondella	Rondelle	Unterlegscheibe	Washer	Arandela
22	002787-3025	Pompetta gasolio				
23	004591-3045	Motore Yanmar	Moteur Yanmar	Motor Yanmar	Yanmar motor	Motor Yanmar
24	004609-3040	Kit campana motore				
25	004651-3040	Pompa tandem				
26	004912-3010	Antivibrante	Plot elastique	Schwingungsdampfer	Pad	Antivibrante
27	005128-2010	Staffa supporto				
28	005333-1015	Collettore di scarico				
29	000465-3040	Rondella	Rondelle	Unterlegscheibe	Washer	Arandela
30	001085-3040	Raccordo	Raccord	Stutzen	Fitting	Racor
31	002095-3040	Raccordo	Raccord	Stutzen	Fitting	Racor
32	003295-3040	Raccordo	Raccord	Stutzen	Fitting	Racor
33	003301-3040	Raccordo	Raccord	Stutzen	Fitting	Racor
34	002537-3010	Snodo				

005227-1010-00

Assieme cofano motore Yanmar

ALMACRAWLER 

TAB.	S.Groupe	REV.	Pag.
13	-	0	1/1

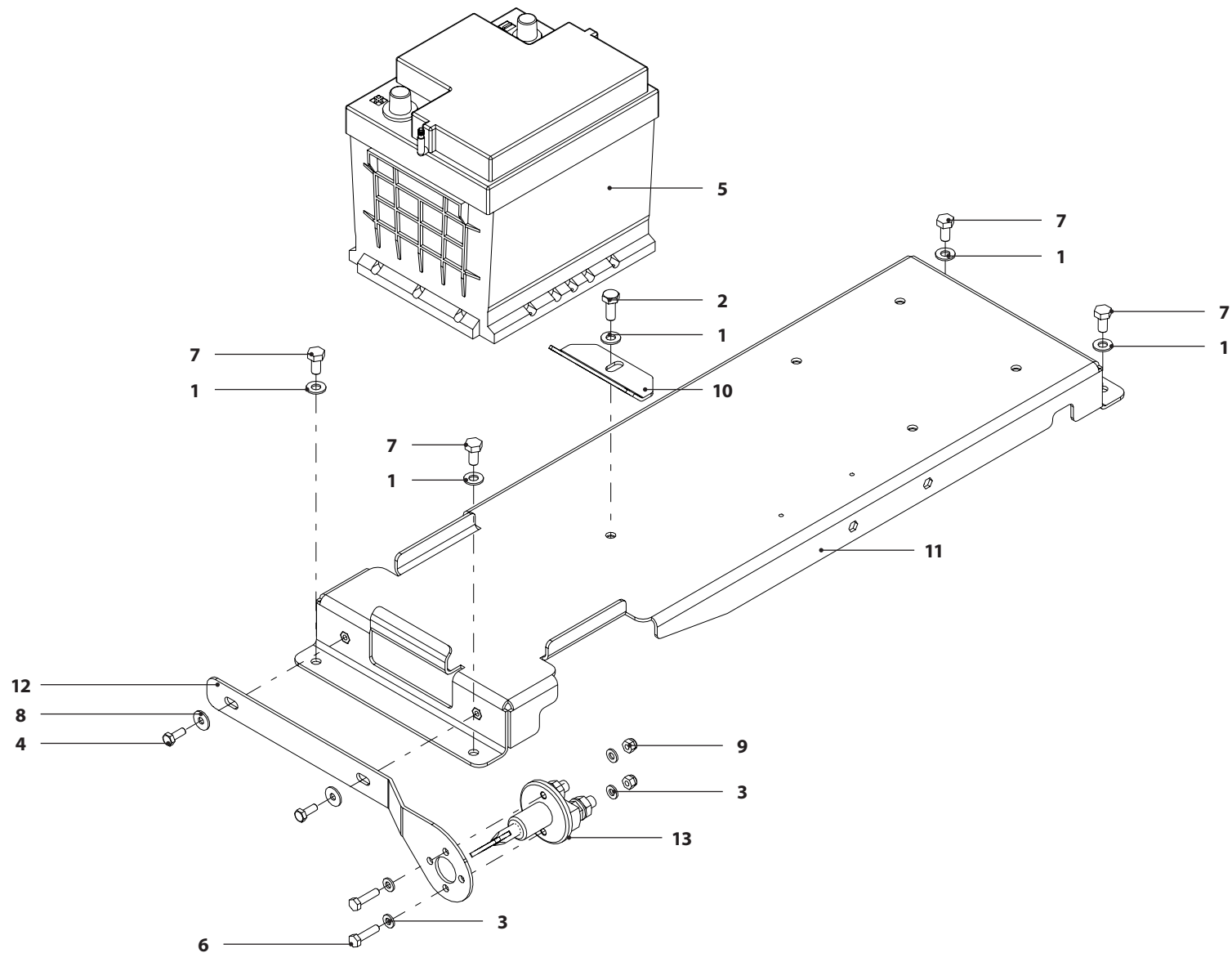


004668-1010-00

Assieme componenti elettrici

ALMACRAWLER 

TAB.	S.Groupe	REV.	Pag.
14	-	0	1/1

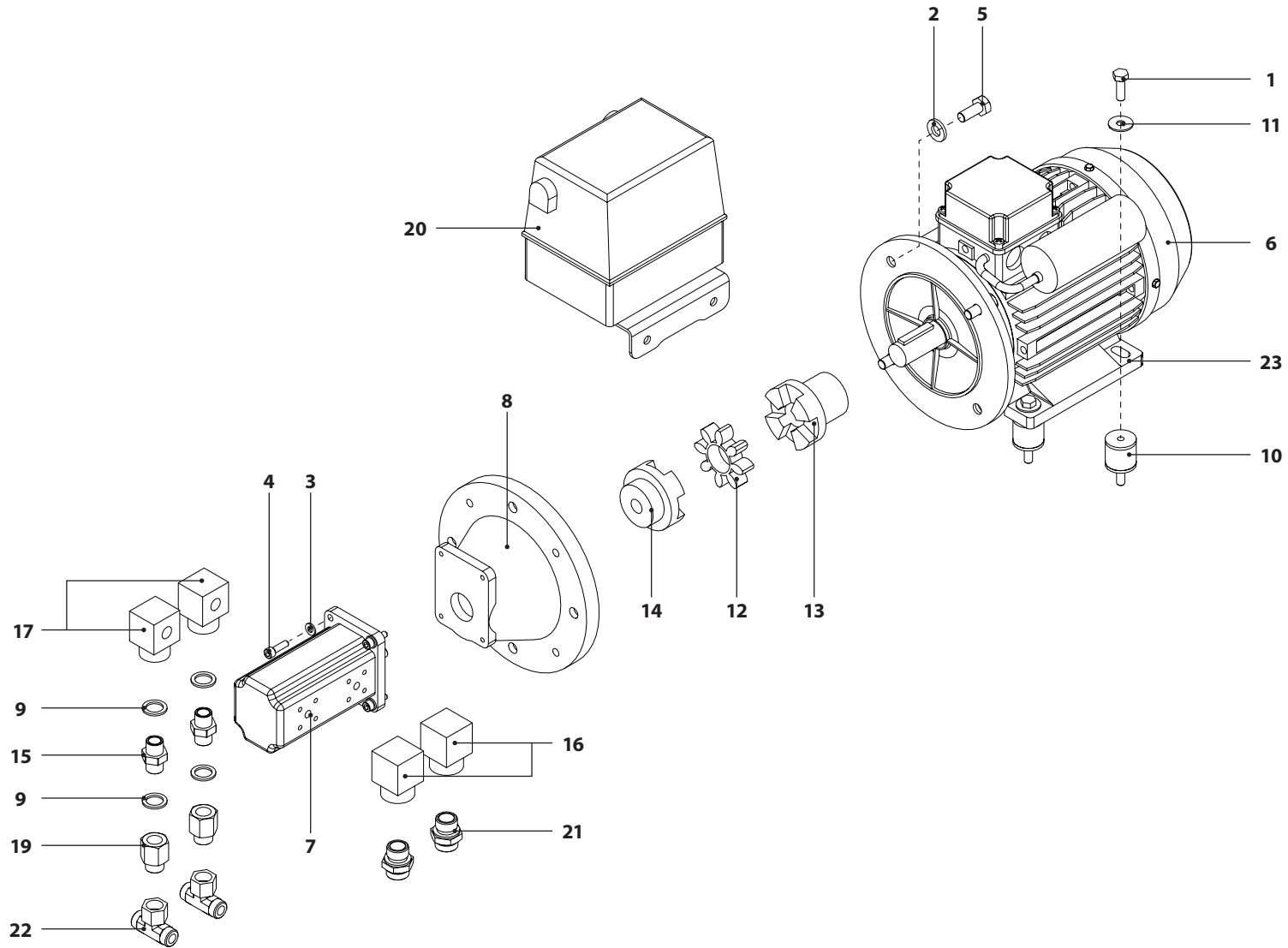


004658-1010-00

Assieme motore elettrico 230V/50Hz

ALMACRAWLER 

TAB.	S.Groupe	REV.	Pag.
15	-	0	1/1

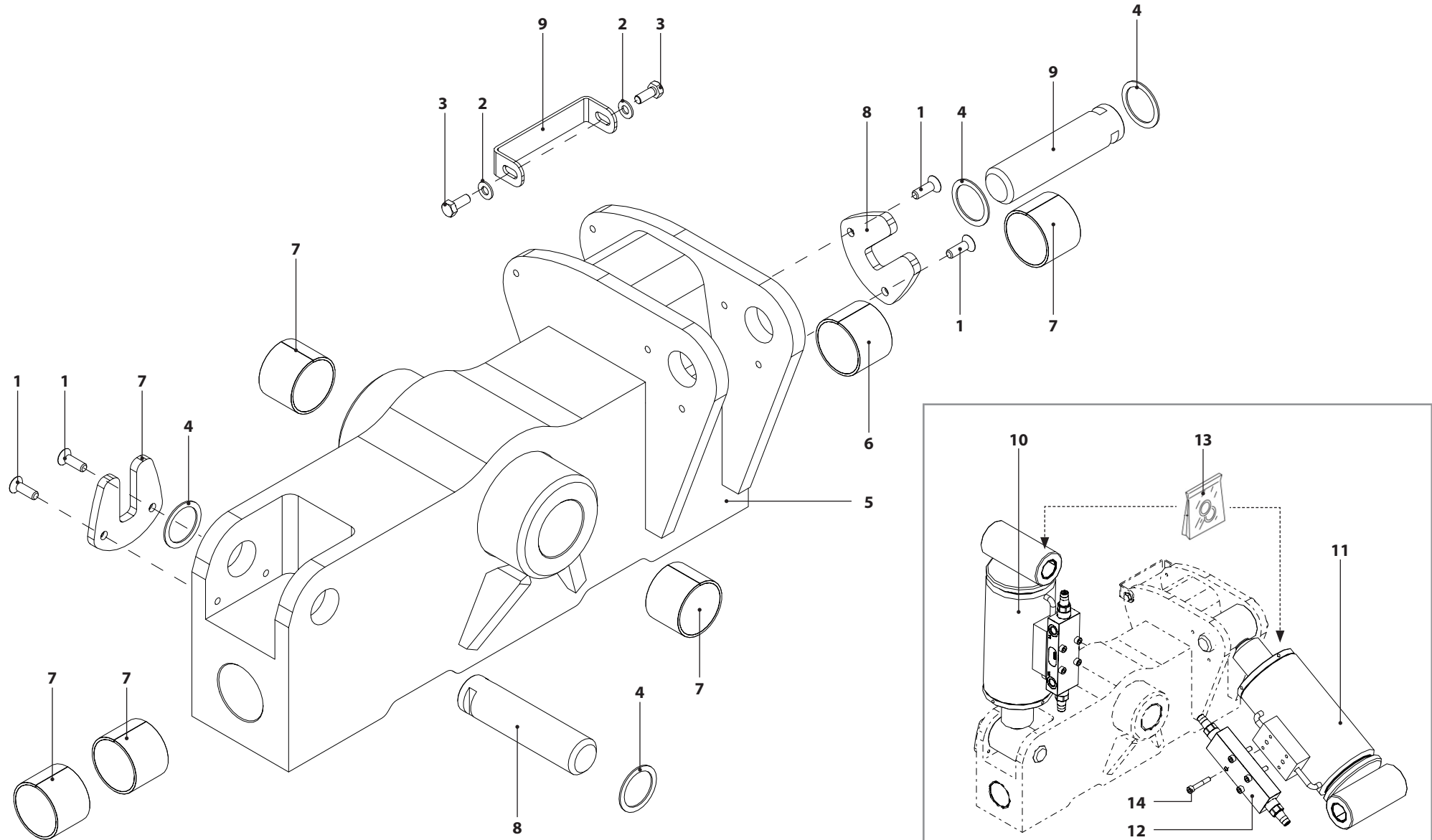


004693-1010-00

Assieme snodo colonna inferiore

ALMACRAWLER 

TAB.	S.Groupe	REV.	Pag.
16	-	0	1/1

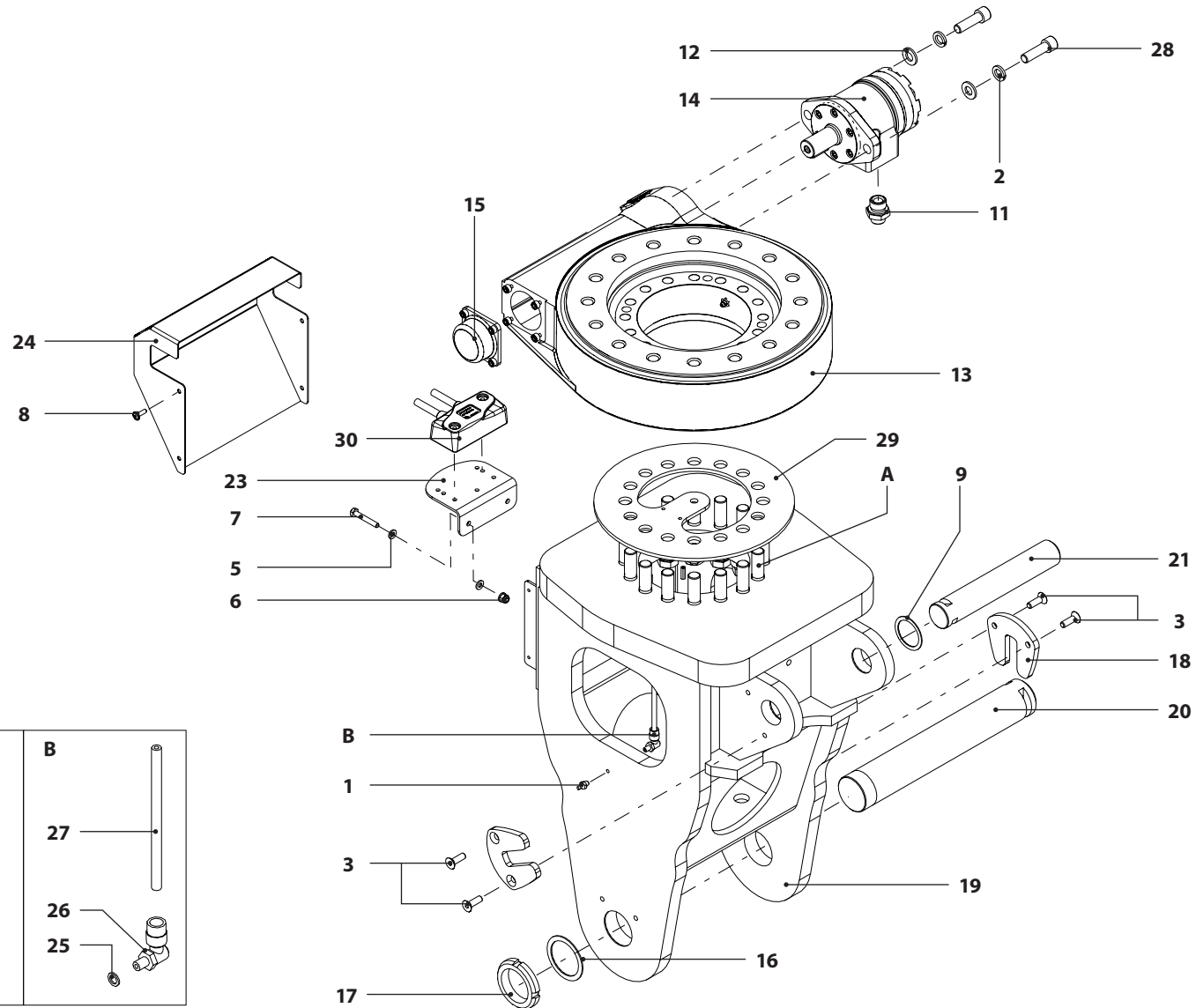


004655-1010-00

Assieme snodo colonna superiore

ALMACRAWLER 

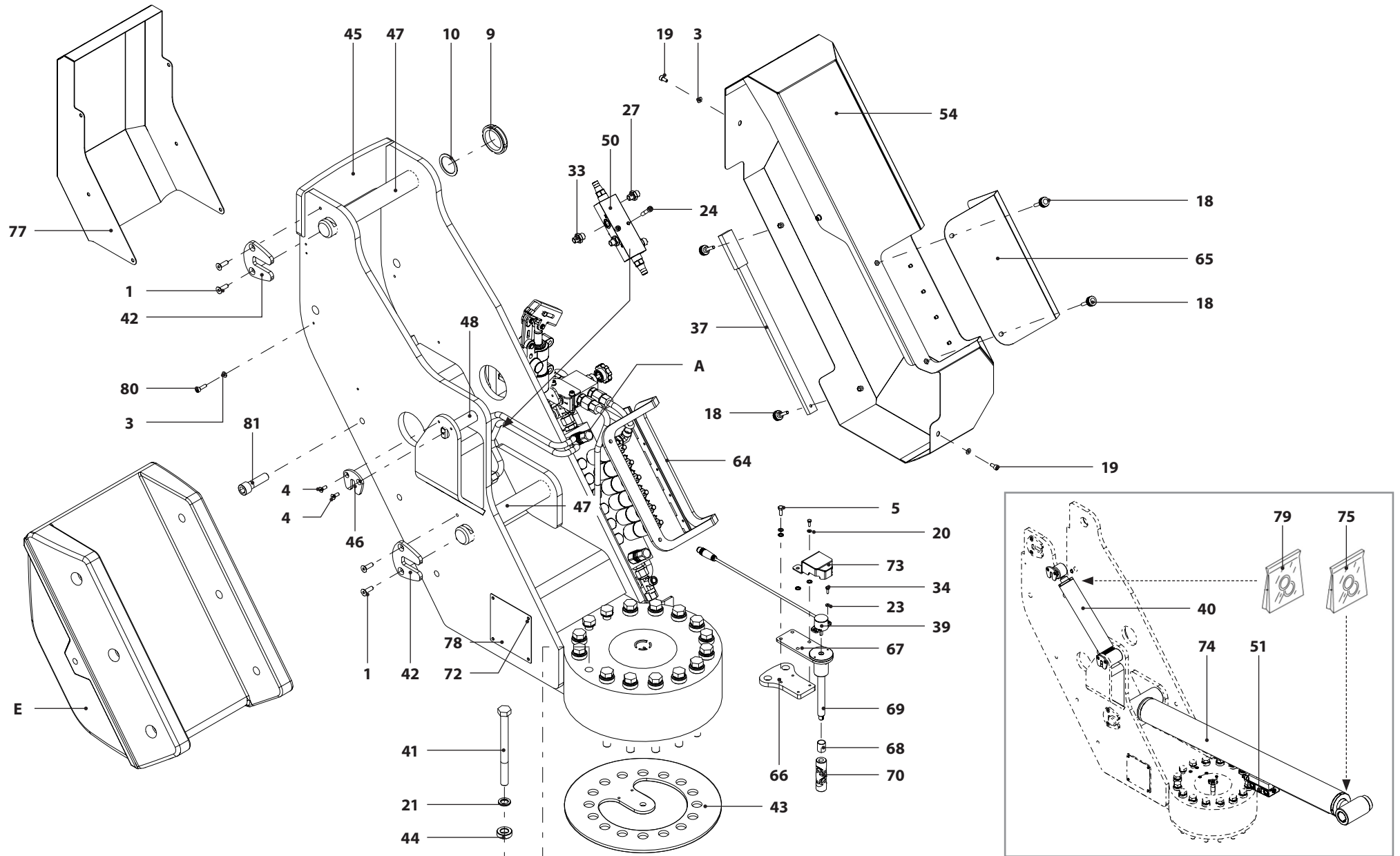
TAB.	S.Groupe	REV.	Pag.
17	-	0	1/1



004656-1010-00

Assieme colonna

TAB.	S.Groupe	REV.	Pag.
18	-	0	1/2

ALMACRAWLER 

004656-1010-00				Assieme colonna	ALMACRAWLER 
TAB.	S.Groupe	REV.	Pag.		
18	-	0	1/2		

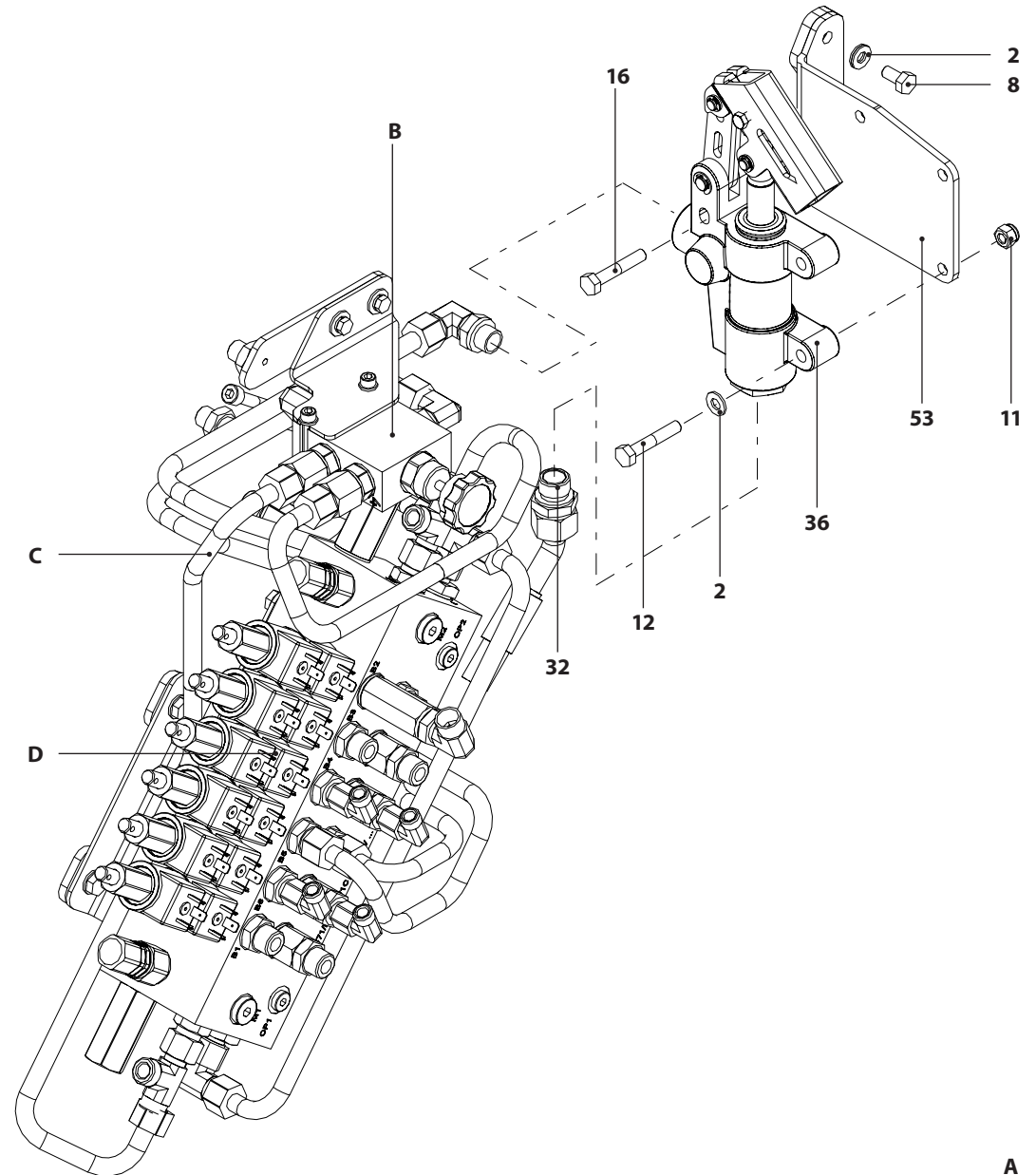
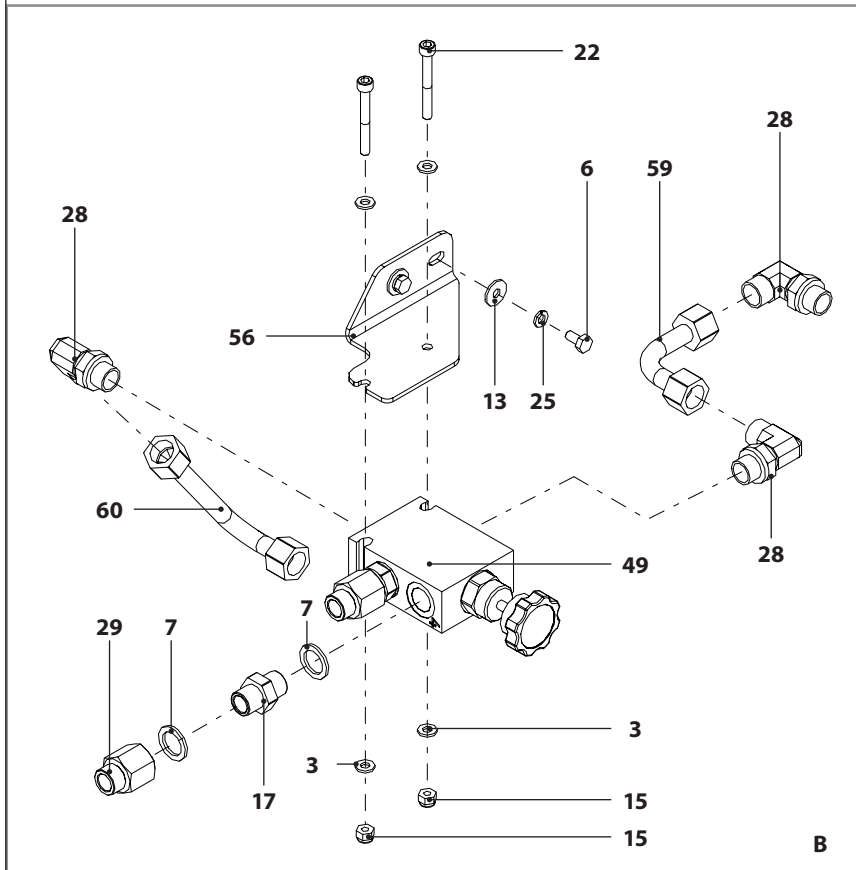
POS.	CODE	IT	DESCRIZIONE	FR	DESIGNATION	DE	BENENNUNG	UK	DESCRIPTION	ES	DENOMINACIONES
1	000183-3020		Vite								
2	000191-3020		Rondella piana								
3	000216-3020		Rondella piana								
4	000237-3020		Vite								
5	000250-3020		Vite								
6	000342-3020		Vite								
7	000465-3040		Rondella Bonded								
8	000752-3020		Vite								
9	000773-3020		Ghiera autobloccante								
10	000774-3025		Anello di spessoramento								
11	000818-3020		Dado esagonale								
12	000820-3020		Vite								
13	000952-3020		Rondella piana								
14	001027-3040		Raccordo	Raccord		Stutzen		Fitting		Racor	
15	001052-3020		Dado	Ecrou		Mutter		Nut		Tuerca	
16	001068-3020		Vite								
17	001085-3040		Valvola unidirezionale								
18	001172-3020		Volantino								
19	001511-3020		Vite								
20	001661-3020		RONDELLA	Rondelle		Unterlegsceibe		Washer		Arandela	
21	001663-3020		RONDELLA	Rondelle		Unterlegsceibe		Washer		Arandela	
22	001829-3020		Vite								
23	001871-3020		RONDELLA	Rondelle		Unterlegsceibe		Washer		Arandela	
24	001995-3020		Vite								
25	002715-3020		Rondella elastica								
26	002899-3040		Raccordo	Raccord		Stutzen		Fitting		Racor	
27	002900-3040		Raccordo	Raccord		Stutzen		Fitting		Racor	
28	002902-3040		Raccordo	Raccord		Stutzen		Fitting		Racor	
29	002905-3040		Raccordo	Raccord		Stutzen		Fitting		Racor	
30	002941-3040		Raccordo	Raccord		Stutzen		Fitting		Racor	
31	002955-2010		Rondella	Rondelle		Unterlegsceibe		Washer		Arandela	
32	003295-3040		Raccordo	Raccord		Stutzen		Fitting		Racor	
33	003334-3040		Raccordo	Raccord		Stutzen		Fitting		Racor	
34	003460-3020		Vite								
35	003495-3040		Raccordo	Raccord		Stutzen		Fitting		Racor	
36	003594-3040		POMPA A MANO								
37	003595-3040		LEVA	Levier		Hebel		Lever		Palanca	
38	004075-3040		VALVOLA	Soupape		Ventil		Valve		Valvula	
39	004597-3030		Encoder								
40	004691-3040		Cilindro	Cylindre		Zylindre		Cylinder		Cilindro	

004656-1010-00

Assieme colonna

ALMACRAWLER 

TAB.	S.Groupe	REV.	Pag.
19	-	0	2/2



A

004656-1010-00				Assieme colonna	
TAB.	S.Groupe	REV.	Pag.		
19	-	0	2/2		

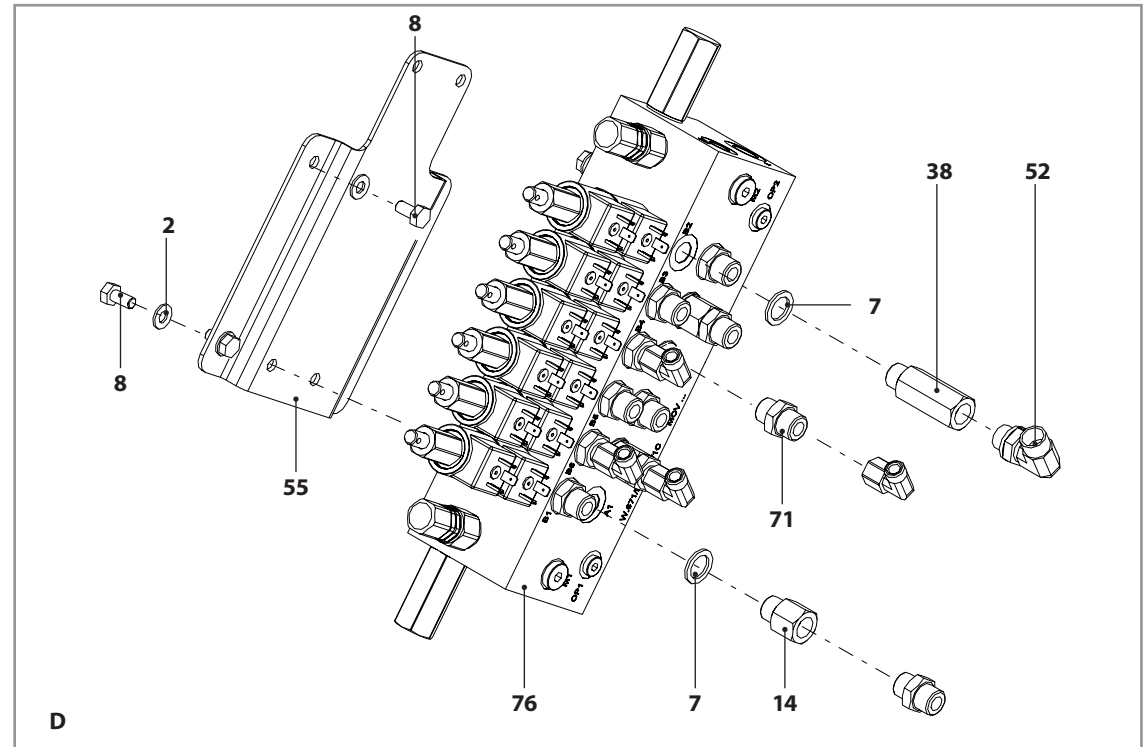
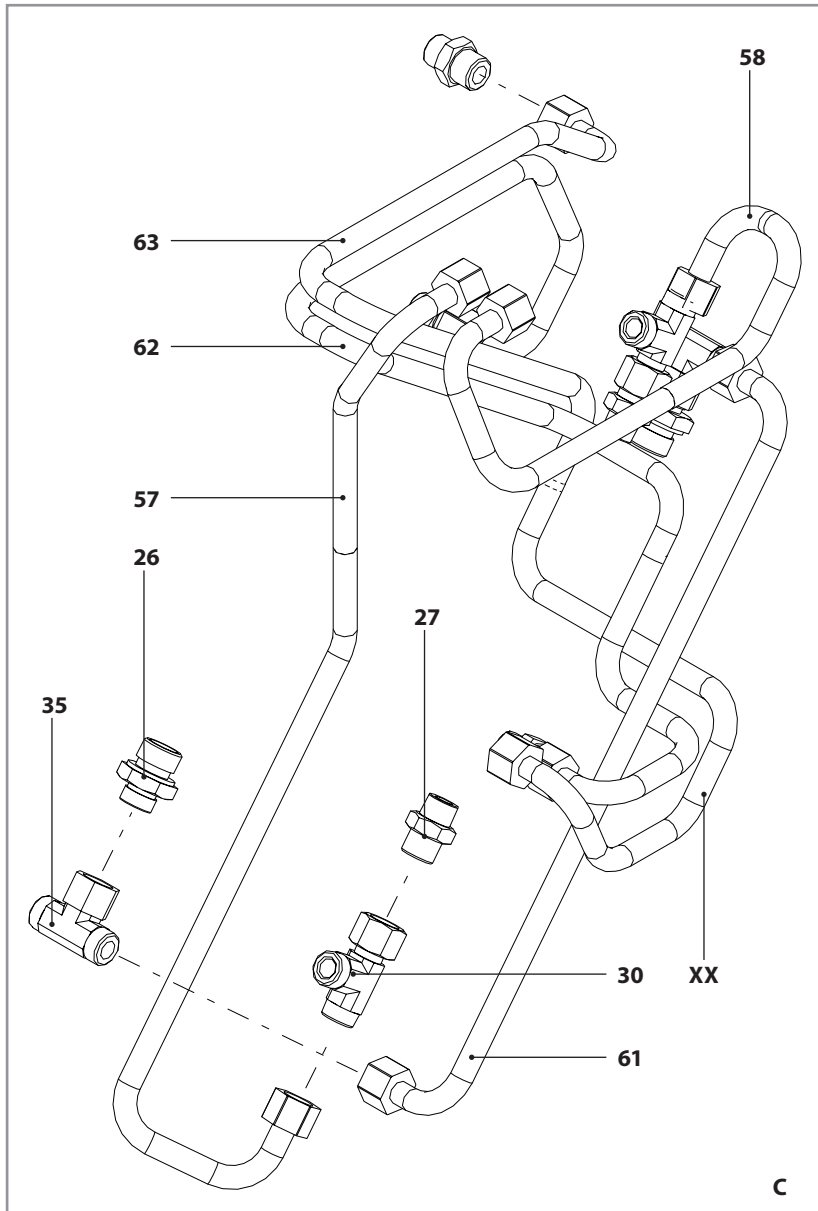
POS.	CODE	IT DESCRIZIONE	FR DESIGNATION	DE BENENNUNG	UK DESCRIPTION	ES DENOMINACIONES
41	004698-3020-10.9	Vite TE				
42	004722-2010-VER-9005	Fermaperno				
43	004733-2010	Distanziale	Entretoise	Distanzstück	Spacer	Distanciador
44	004734-2010	Distanziale	Entretoise	Distanzstück	Spacer	Distanciador
45	004739-1015-VER-9005	Colonna				
46	004750-2010-VER-9005	Fermaperno				
47	004751-2010	Perno	Axe	Bolzen	Pin	Perno
48	004752-2010	Perno	Axe	Bolzen	Pin	Perno
49	004890-3040	Deviatore				
50	004897-3040-VI	Valvola di bilanciamento				
51	004898-3040-VI	Valvola cilindro				
52	004943-3040	Raccordo	Raccord	Stutzen	Fitting	Racor
53	004996-2010	Lamiera	Tole	Blech	Plate	Lamina
54	004997-1015-VER9005	Carter	Carter	Gehäuse	Casing	Carter
55	005005-2010	Supporto	Support	Träger	Support	Soporte
56	005048-2010	Lamiera	Tole	Blech	Plate	Lamina
57	005051-3040	Tubo rigido idraulico				
58	005052-3040	Tubo rigido idraulico				
59	005053-3040	Tubo rigido idraulico				
60	005054-3040	Tubo rigido idraulico				
61	005055-3040	Tubo rigido idraulico				
62	005057-3040	Tubo rigido idraulico				
63	005058-3040	Tubo rigido idraulico				
64	005059-2010	Guarnizione	Joint	Dichtung	Seal	Junta
65	005060-1015-VER9005	Portello	Porte	Klappe	Door	Puerta
66	005386-2010	Lamiera	Tole	Blech	Plate	Lamina
67	005387-1015	Supporto	Support	Träger	Support	Soporte
68	005391-3025	Boccola	Douille	Buchse	Bushing	Casquillo
69	005392-2010	Perno	Axe	Bolzen	Pin	Perno
70	005394-3010	Giunto 03XD-2C 10X22X74				
71	005506-3040	Raccordo	Raccord	Stutzen	Fitting	Racor
72	005541-3020	Vite TBCEI				
73	005674-1015-VER9005	Carter	Carter	Gehäuse	Casing	Carter
74	004688-3040	Cilindro				
75		Guarnizioni				
76	004891-3040	Gruppo idraulico				
77	005663-2010	Carter	Carter	Gehäuse	Casing	Carter
78	0010150-2035	Targhetta				
79		Guarnizioni				
80	000217-3020	Vite				
81	005547-3020	Vite				

004656-1010-00

Assieme colonna

ALMACRAWLER 

TAB.	S.Groupe	REV.	Pag.
20	-	0	2/2

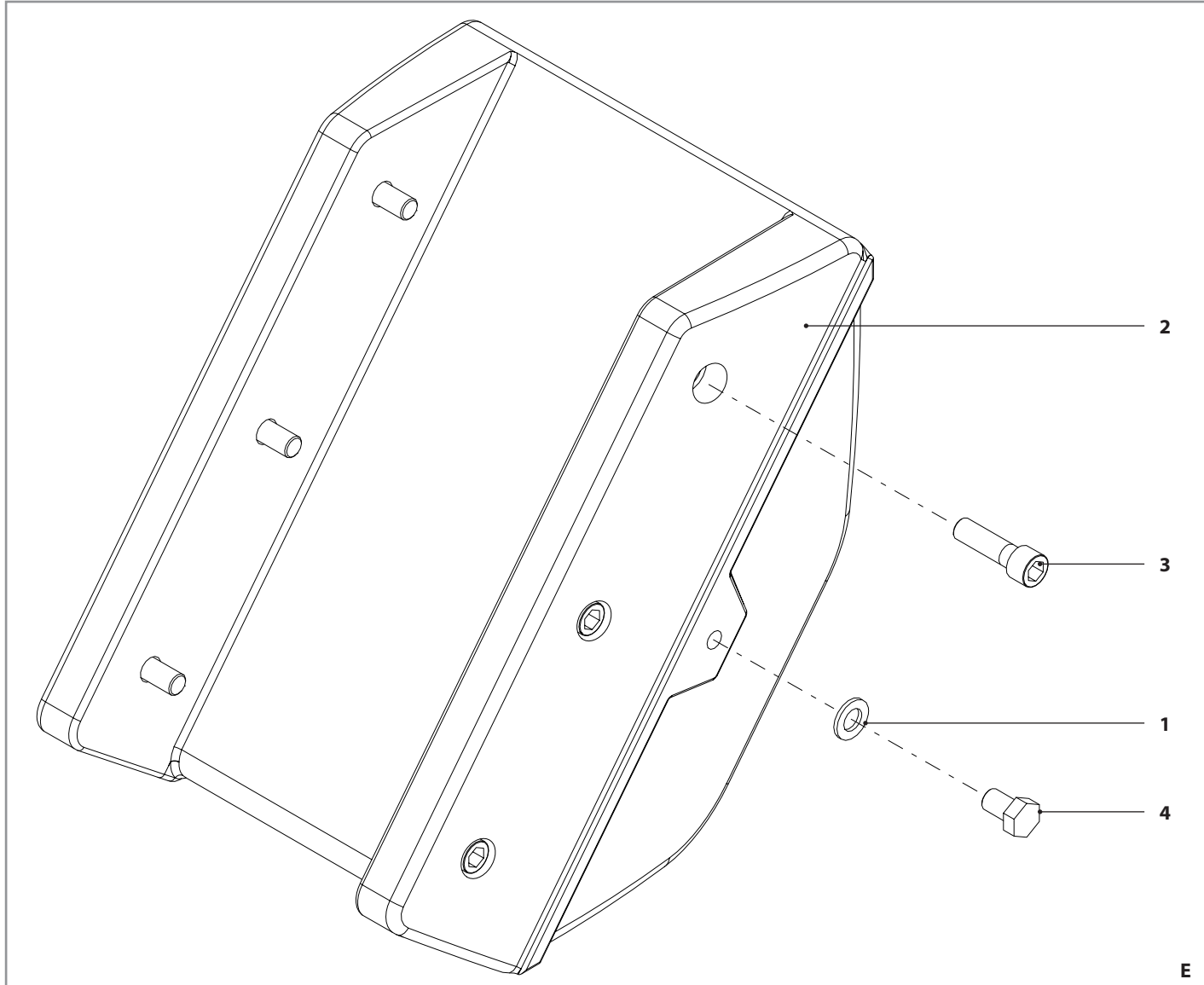


004661-1010-00

Assieme zavorra colonna

ALMACRAWLER 

TAB.	S.Groupe	REV.	Pag.
21	-	0	1/1



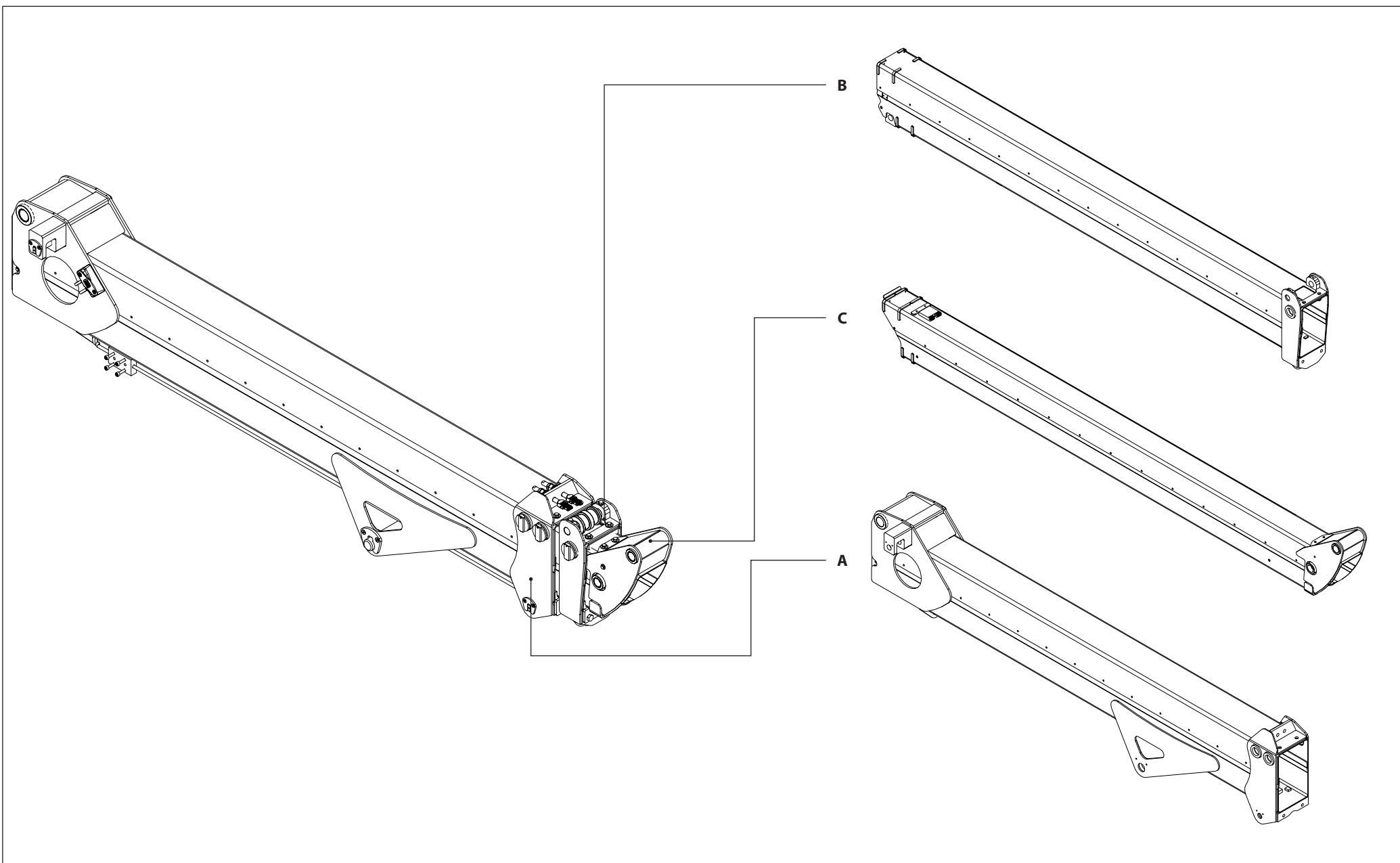
004662-1010-00

Assieme braccio

ALMACRAWLER 

TAB.	S.Groupe	REV.	Pag.
------	----------	------	------

22	-	0	1/4
----	---	---	-----

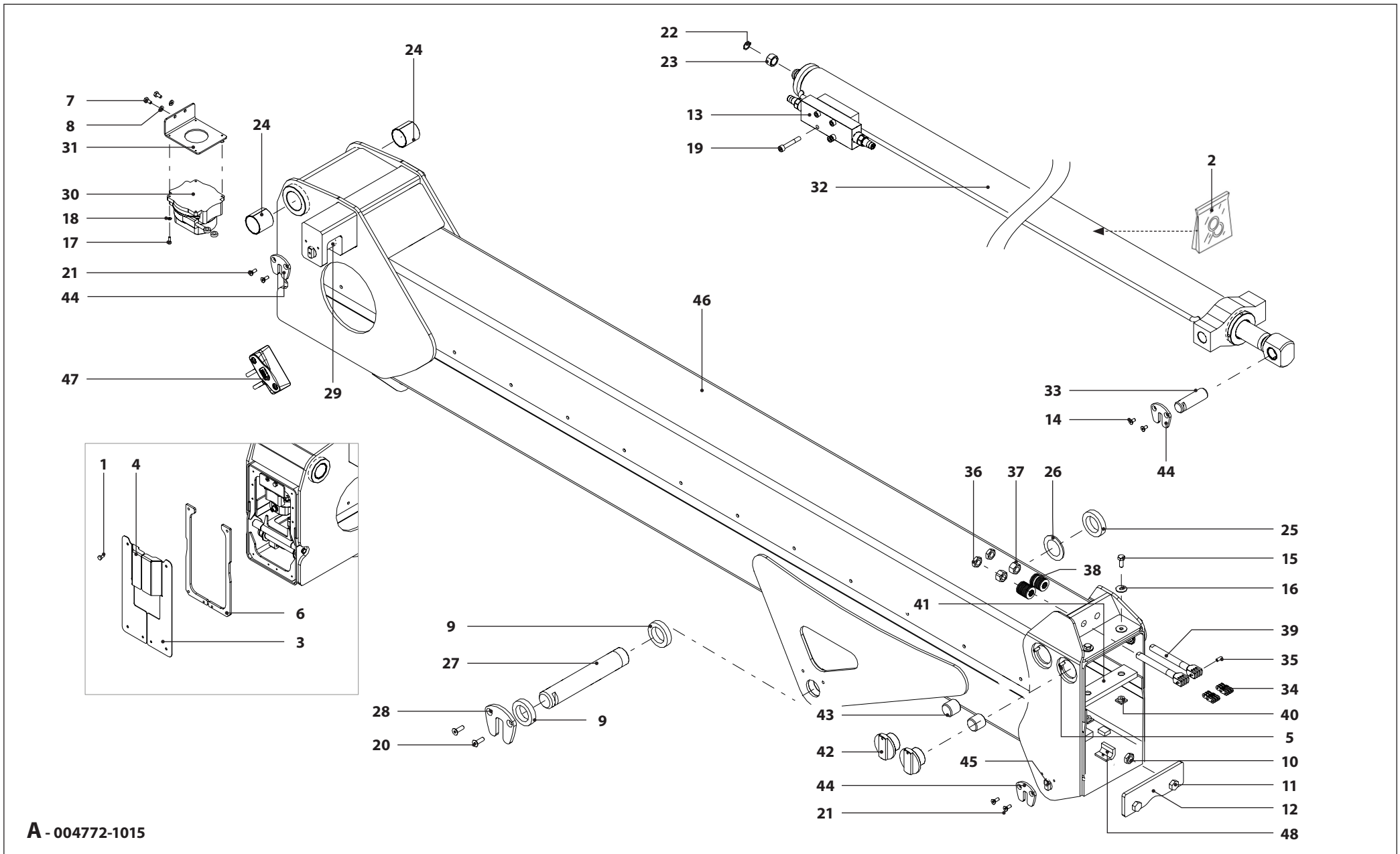


004662-1010-00

Assieme braccio



TAB.	S.Groupe	REV.	Pag.
23	004772	0	2/4



A - 004772-1015

004662-1010-00				Assieme braccio	ALMACRAWLER 
TAB.	S.Groupe	REV.	Pag.		
23	004772	0	2/4		

POS.	CODE	IT	DESCRIZIONE	FR	DESIGNATION	DE	BENENNUNG	UK	DESCRIPTION	ES	DENOMINACIONES
1	004191-3020		Vite	Vis	Schraube	Screw	Tornillo				
2			Guarnizioni								
3	005582-2010		Carter	Carter	Gehäuse	Casing	Carter				
4	005003-2010		Carter	Carter	Gehäuse	Casing	Carter				
5	005542-3020		Grano								
6	005537-2010		Distanziale	Entretoise	Distanzstück	Spacer	Distanciador				
7	000342-3020		Vite	Vis	Schraube	Screw	Tornillo				
8	000216-3020		Rondella	Rondelle	Unterlegscheibe	Washer	Arandela				
9	004922-2010		Distanziale	Entretoise	Distanzstück	Spacer	Distanciador				
10	000108-3020		Dado	Ecrou	Mutter	Nut	Tuerca				
11	000223-3020		Vite	Vis	Schraube	Screw	Tornillo				
12	004915-2010		Fermapattino								
13	001715-3040-VI		Valvola	Soupape	Ventil	Valve	Valvula				
14	004384-3020		Vite	Vis	Schraube	Screw	Tornillo				
15	000193-3020		Vite	Vis	Schraube	Screw	Tornillo				
16	001002-3020		Rondella	Rondelle	Unterlegscheibe	Washer	Arandela				
17	000998-3020		Vite	Vis	Schraube	Screw	Tornillo				
18	000295-3020		Rondella	Rondelle	Unterlegscheibe	Washer	Arandela				
19	004905-3020		Vite	Vis	Schraube	Screw	Tornillo				
20	000183-3020		Vite	Vis	Schraube	Screw	Tornillo				
21	000237-3020		Vite	Vis	Schraube	Screw	Tornillo				
22	001648-3020		Anello d'arresto								
23	004838-2010		Boccola	Douille	Buchse	Bushing	Casquillo				
24	003213-3025		Boccola	Douille	Buchse	Bushing	Casquillo				
25	000773-3020		Ghiera	Frette	Nutmutter	Ring nut	Virola				
26	000774-3025		Anello di spessoramento								
27	004863-2010		Perno	Axe	Bolzen	Pin	Perno				
28	004722-2010		Fermaperno								
29	004752-2010		Perno	Axe	Bolzen	Pin	Perno				
30	004598-3030		SENSORE	Capteur	Sensor	Sensor	Sensor				
31	004858-2010		Supporto	Support	Träger	Support	Soporte				
32	004688-3040		Cilindro	Cylindre	Cylinder	Cylindre	Cylinder				
33	004861-2010		Perno	Axe	Bolzen	Pin	Perno				
34	004707-3010		Catena								
35	004704-3010		Perno	Axe	Bolzen	Pin	Perno				
36	004703-3020		Dado	Ecrou	Mutter	Nut	Tuerca				
37	004702-3020		Dado	Ecrou	Mutter	Nut	Tuerca				
38	004705-1010-00		Assieme molle								
39	004837-2010		Tirante								
40	004866-2010		Fermapattino								
41	004852-2010		Pattino	Patin	Gleitplatte	Sliding block	Patin				
42	004835-2010		Spingi pattino								
43	004836-2010		Pattino	Patin	Gleitplatte	Sliding block	Patin				
44	004750-2010		Fermaperno								
45	004862-2010		Perno	Axe	Bolzen	Pin	Perno				
46	004772-1015		Braccio completo								
47	001704-1020		Sensore								
48	004853-2010		Pattino	Patin	Gleitplatte	Sliding block	Patin				

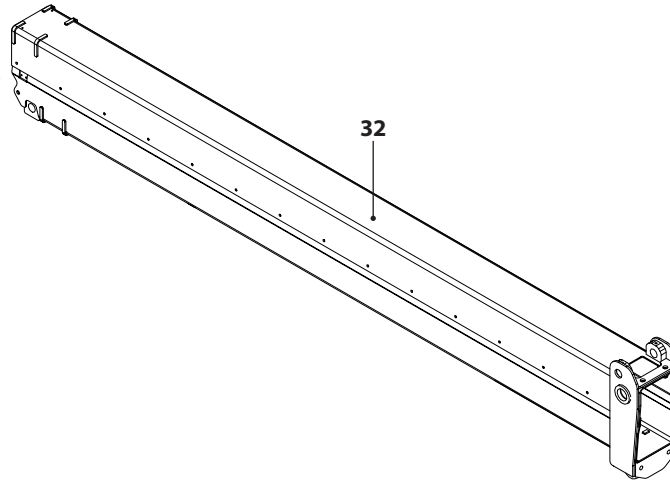
004662-1010-00

Assieme braccio

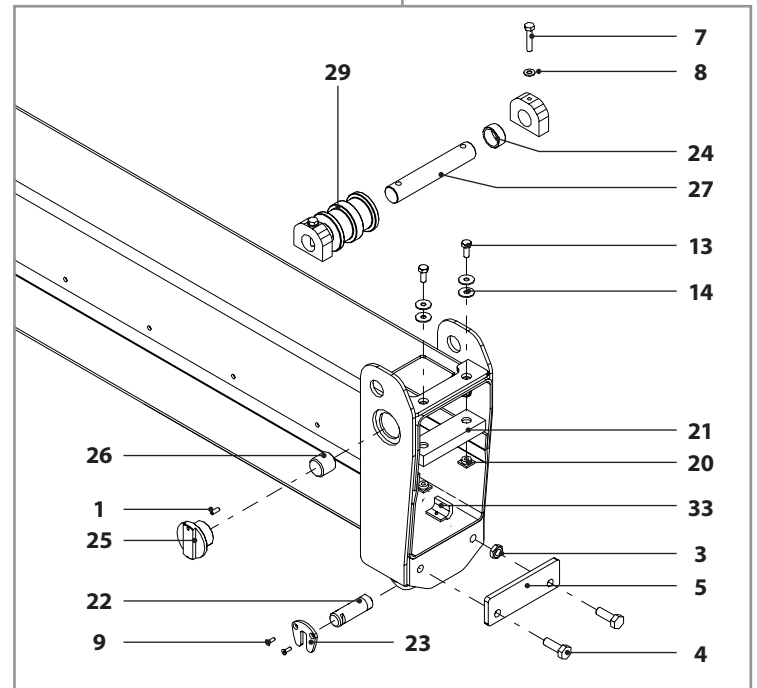
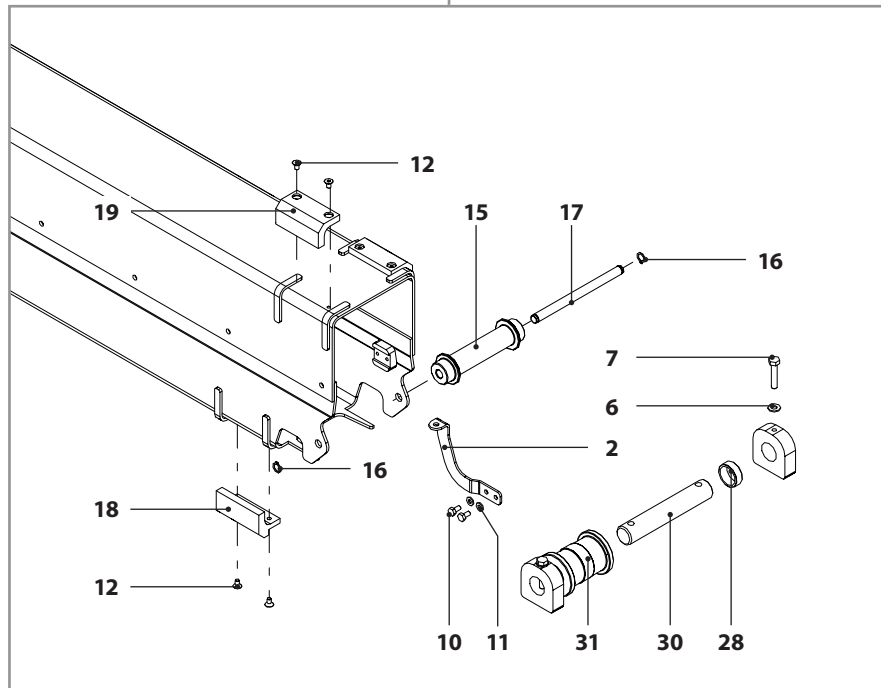
ALMACRAWLER 

TAB.	S.Groupe	REV.	Pag.
24	004774	0	3/4

B - 004774-1015



32

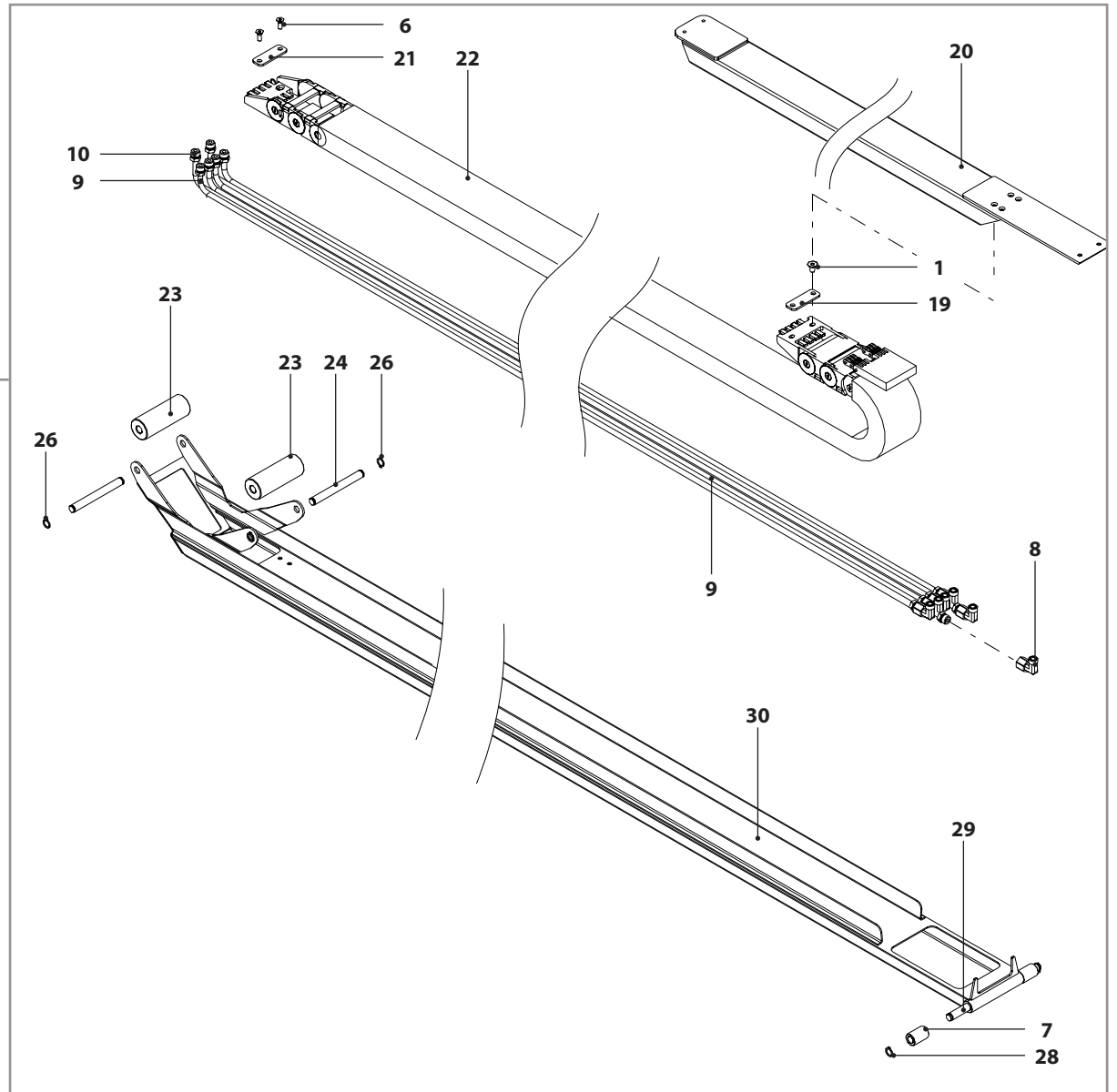
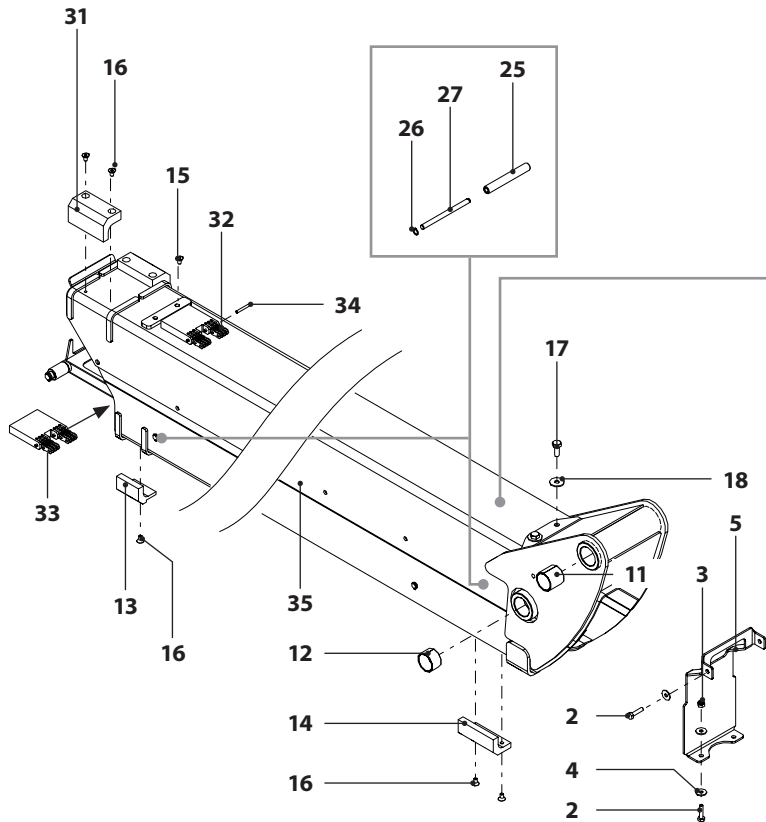


004662-1010-00

Assieme braccio

ALMACRAWLER

TAB.	S.Groupe	REV.	Pag.
25	004776	0	4/4



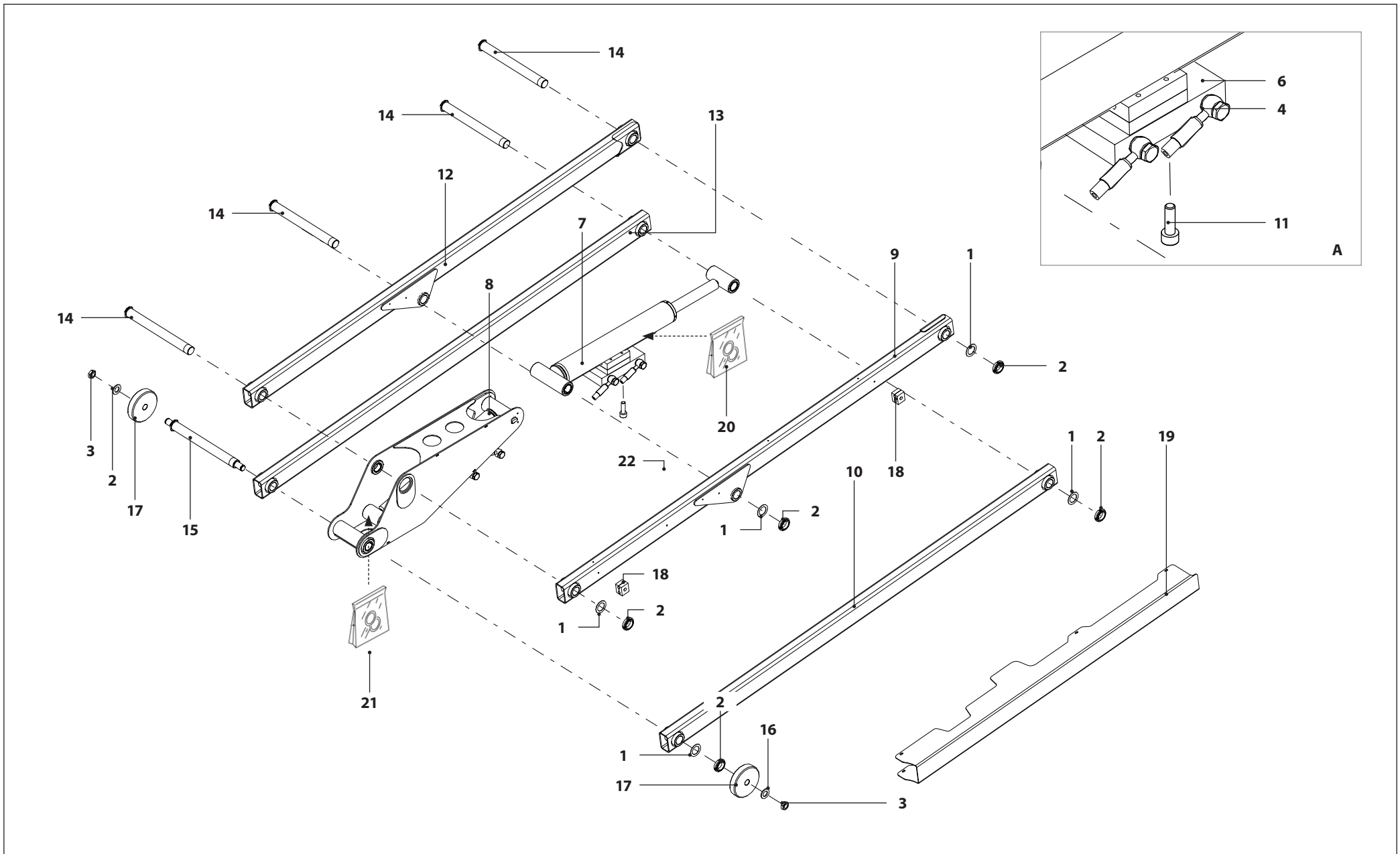
C - 004776-1015

004663-1010-00

Assieme antenna

ALMACRAWLER 

TAB.	S.Groupe	REV.	Pag.
26	-	0	1/2

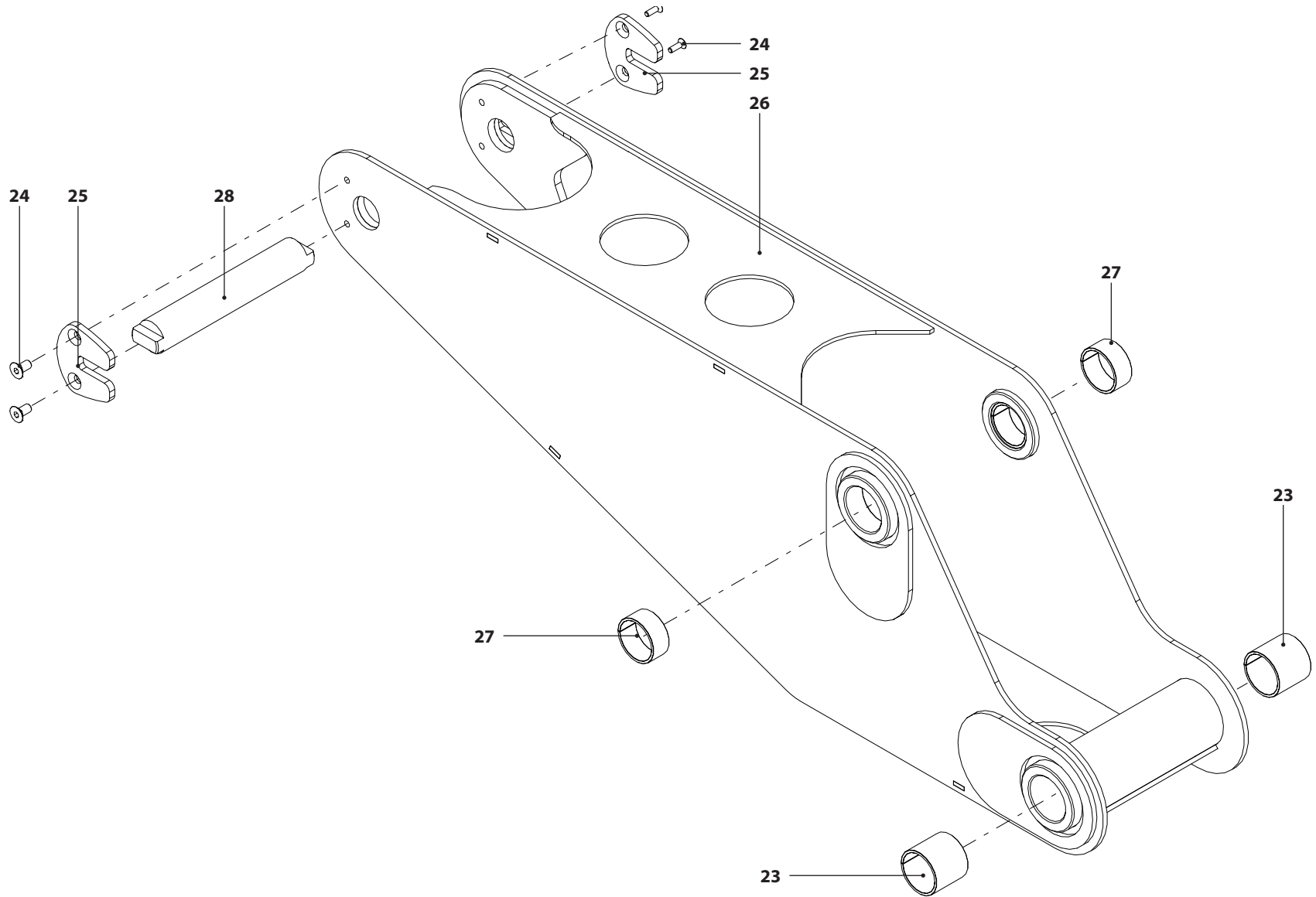


004663-1010-00

Assieme snodo bilanciamento navicella

ALMACRAWLER 

TAB.	S.Groupe	REV.	Pag.
27	004923	0	2/2

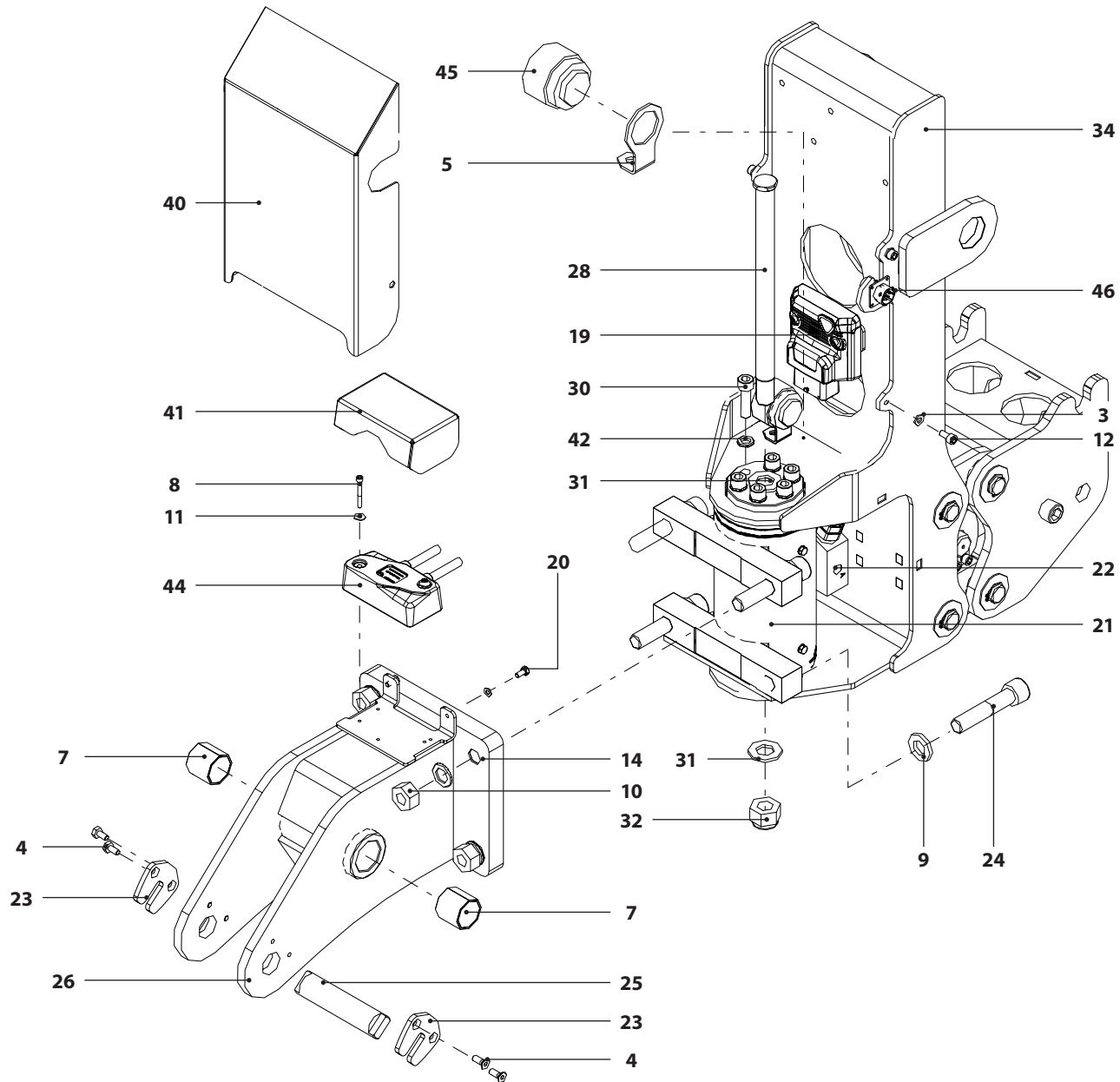


004664-1010-00

Assieme supp.attuatore e supp.navicella

ALMACRAWLER 

TAB.	S.Groupe	REV.	Pag.
28	-	0	1/2



004664-1010-00				Assieme supp.attuatore e supp.navicella	ALMACRAWLER 
TAB.	S.Groupe	REV.	Pag.		
28	-	0	1/2		

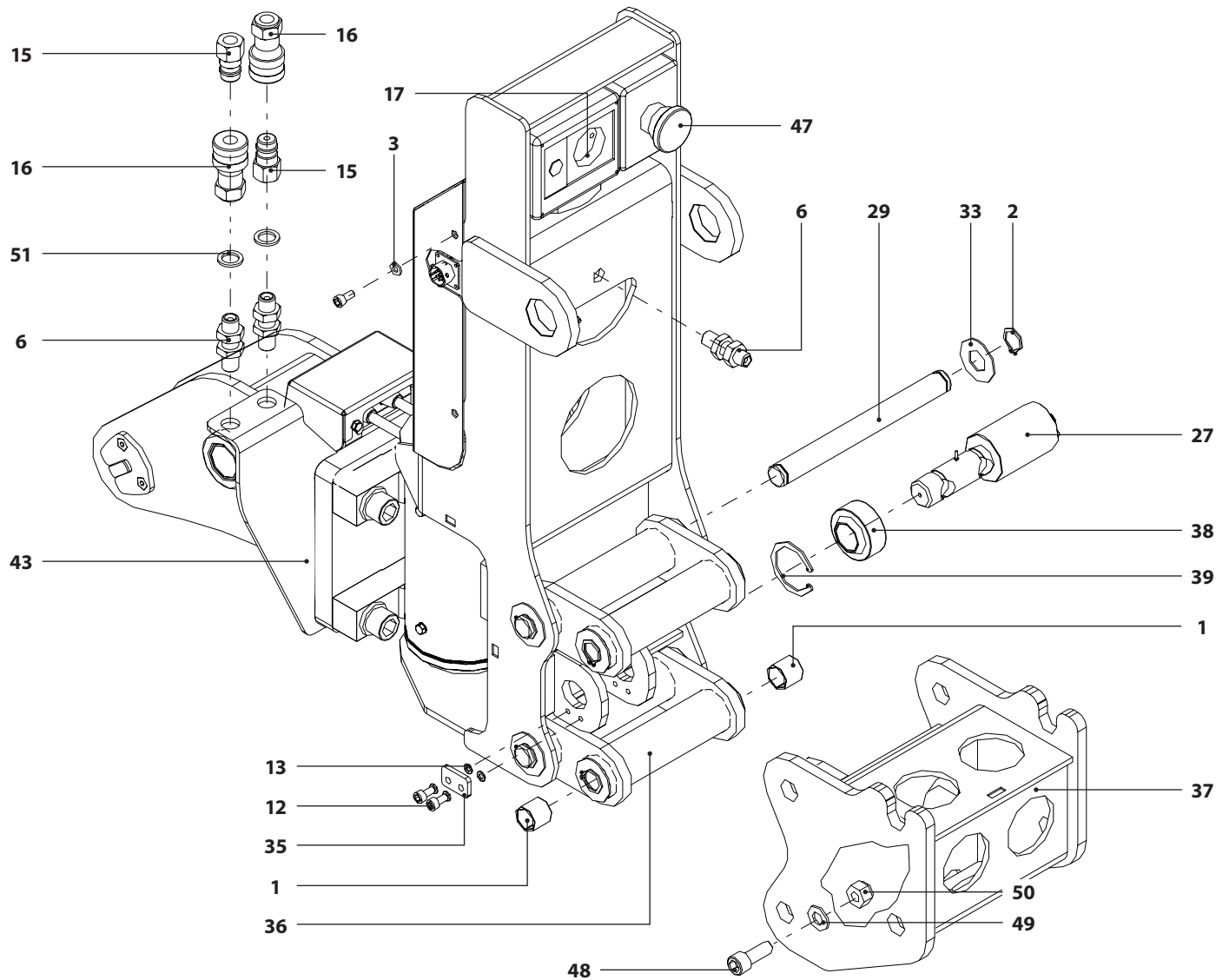
POS.	CODE	IT DESCRIZIONE	FR DESIGNATION	DE BENENNUNG	UK DESCRIPTION	ES DENOMINACIONES
1	000037-3020	Boccola	Douille	Buchse	Bushing	Casquillo
2	000041-3020	Anello d'arresto				
3	000216-3020	Rondella	Rondelle	Unterlegscheibe	Washer	Arandela
4	000237-3020	Vite	Vis	Schraube	Screw	Tornillo
5	000379-2010	Staffa	Etrier	Bügel	Bracket	Estribo
6	000390-3040	Raccordo	Raccord	Stutzen	Fitting	Racor
7	000400-3025	Boccola	Douille	Buchse	Bushing	Casquillo
8	000520-3020	Vite	Vis	Schraube	Screw	Tornillo
9	000777-3020	Rondella	Rondelle	Unterlegscheibe	Washer	Arandela
10	000779-3020	Dado	Ecrou	Mutter	Nut	Tuerca
11	001004-3020	Rondella	Rondelle	Unterlegscheibe	Washer	Arandela
12	001511-3020	Vite	Vis	Schraube	Screw	Tornillo
13	001660-3020	RONDELLA	Rondelle	Unterlegscheibe	Washer	Arandela
14	001663-3020	RONDELLA	Rondelle	Unterlegscheibe	Washer	Arandela
15	003023-3040	Innesto maschio				
16	003024-3040	Innesto femmina				
17	003029-3030	Scatola elettrica				
19	003485-3035	Centralina	Dispositif de comm.	Steuergehäuse	Control Unit	Central
20	004225-3020	Vite	Vis	Schraube	Screw	Tornillo
21	004596-3040	ATTUATORE ROTATIVO				
22	004684-3040	Valvola	Soupape	Ventil	Valve	Valvula
23	004750-2010-VER-9005	Fermaperno				
24	004763-3020	Vite	Vis	Schraube	Screw	Tornillo
25	004764-2010	Perno	Axe	Bolzen	Pin	Perno
26	004765-1015-VER-9005	Supporto	Support	Träger	Support	Soporte
27	004903-3030	Cella di carico				
28	005290-2010	Perno	Axe	Bolzen	Pin	Perno
29	005292-2010	Perno	Axe	Bolzen	Pin	Perno
30	005293-3020	Vite	Vis	Schraube	Screw	Tornillo
31	005294-3020	Rondella	Rondelle	Unterlegscheibe	Washer	Arandela
32	005295-3020	Dado	Ecrou	Mutter	Nut	Tuerca
33	005296-2010	Rondella	Rondelle	Unterlegscheibe	Washer	Arandela
34	005297-1015-VER9005	Supporto	Support	Träger	Support	Soporte

004664-1010-00

Assieme supp.attuatore e supp.navicella

ALMACRAWLER 

TAB.	S.Groupe	REV.	Pag.
29	-	0	2/2

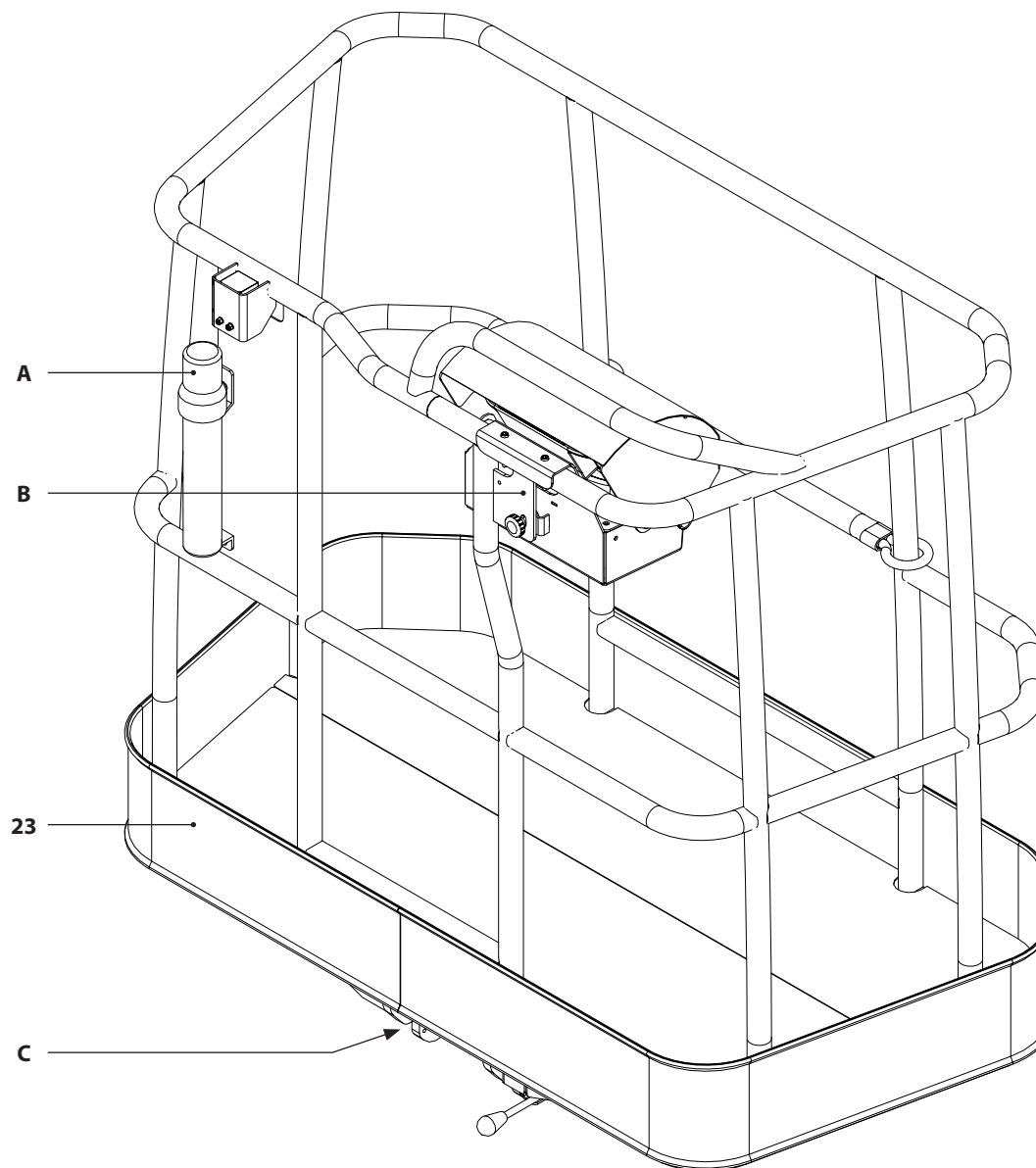
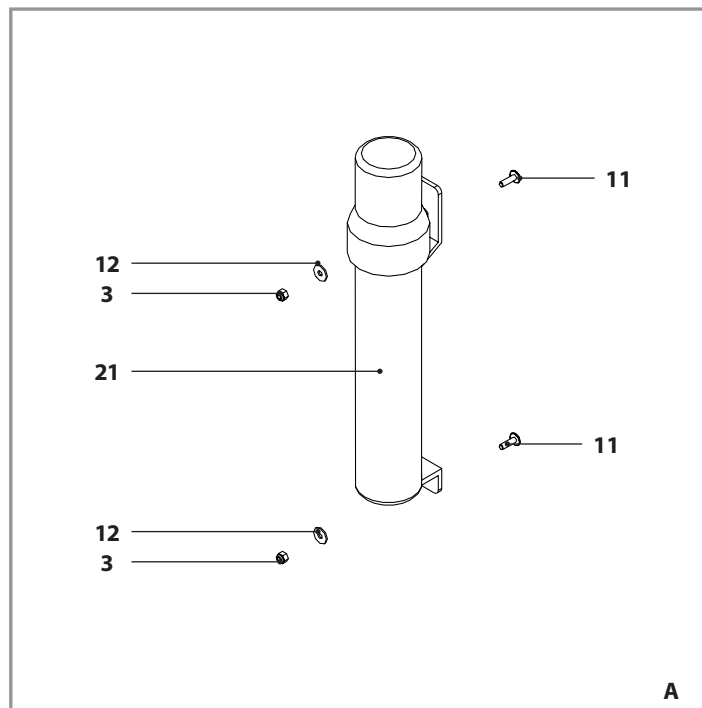


004665-1010-00

Assieme navicella

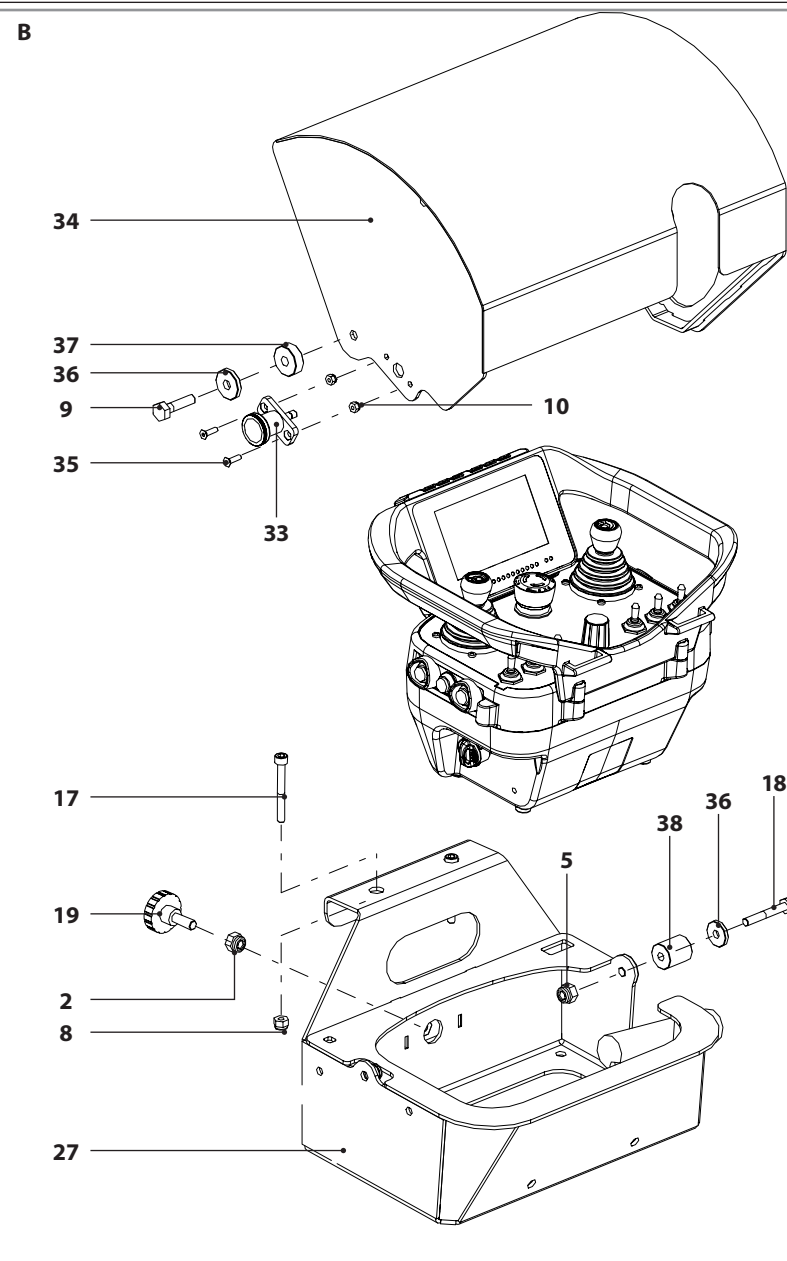


TAB.	S.Groupe	REV.	Pag.
30	-	0	1/3



004665-1010-00				Assieme navicella	ALMACRAWLER 
TAB.	S.Groupe	REV.	Pag.		
30	-	0	1/3		

POS.	CODE	IT	DESCRIZIONE	FR	DESIGNATION	DE	BENENNUNG	UK	DESCRIPTION	ES	DENOMINACIONES
1	000191-3020		Rondella		Rondelle		Unterlegscheibe		Washer		Arandela
2	000192-3020		Dado		Ecrou		Mutter		Nut		Tuerca
3	000293-3020		Dado		Ecrou		Mutter		Nut		Tuerca
4	000558-3020		Vite		Vis		Schraube		Screw		Tornillo
5	000818-3020		Dado		Ecrou		Mutter		Nut		Tuerca
6	000865-3020		Copiglia								
7	000901-3020		Vite		Vis		Schraube		Screw		Tornillo
8	001052-3020		Dado		Ecrou		Mutter		Nut		Tuerca
9	001117-3020		Vite		Vis		Schraube		Screw		Tornillo
10	001225-3020		Dado		Ecrou		Mutter		Nut		Tuerca
11	001510-3020		Vite		Vis		Schraube		Screw		Tornillo
12	001512-3020		Rondella		Rondelle		Unterlegscheibe		Washer		Arandela
13	001660-3020		RONDELLA		Rondelle		Unterlegscheibe		Washer		Arandela
14	001662-3020		RONDELLA		Rondelle		Unterlegscheibe		Washer		Arandela
15	001737-3020		Vite		Vis		Schraube		Screw		Tornillo
16	001809-3010		Molla		Ressort		Feder		Spring		Muelle
17	001829-3020		Vite		Vis		Schraube		Screw		Tornillo
18	001875-3020		Vite		Vis		Schraube		Screw		Tornillo
19	002350-3020		Volantino								
20	002701-3020		Rondella		Rondelle		Unterlegscheibe		Washer		Arandela
21	001338-3010		Portadocumenti								
22	004937-3030		Sensore		Capteur		Sensor		Sensor		Sensor
23	004964-1015		Navicella								
24	005291-2010		Perno		Axe		Bolzen		Pin		Perno
25	005296-2010		Rondella		Rondelle		Unterlegscheibe		Washer		Arandela
26	005353-3025		Ghiera		Frette		Nutmutter		Ring nut		Viola
27	005374-1015-VER9005		Supporto		Support		Träger		Support		Soporte
28	005474-1015		Perno		Axe		Bolzen		Pin		Perno
29	005480-3010		Impugnatura								
30	005481-1015		Scatola sostegno								
31	005489-1015		Leva oscillante								
32	005518-2010		Staffa		Etrier		Bügel		Bracket		Estribo
33	005521-3010		Pistoncino								
34	005523-1015-VER9005		Coperchio		Couvercle		Deckel		Cover		Tapa
35	005529-3020		Vite		Vis		Schraube		Screw		Tornillo
36	005531-2010		Rondella		Rondelle		Unterlegscheibe		Washer		Arandela

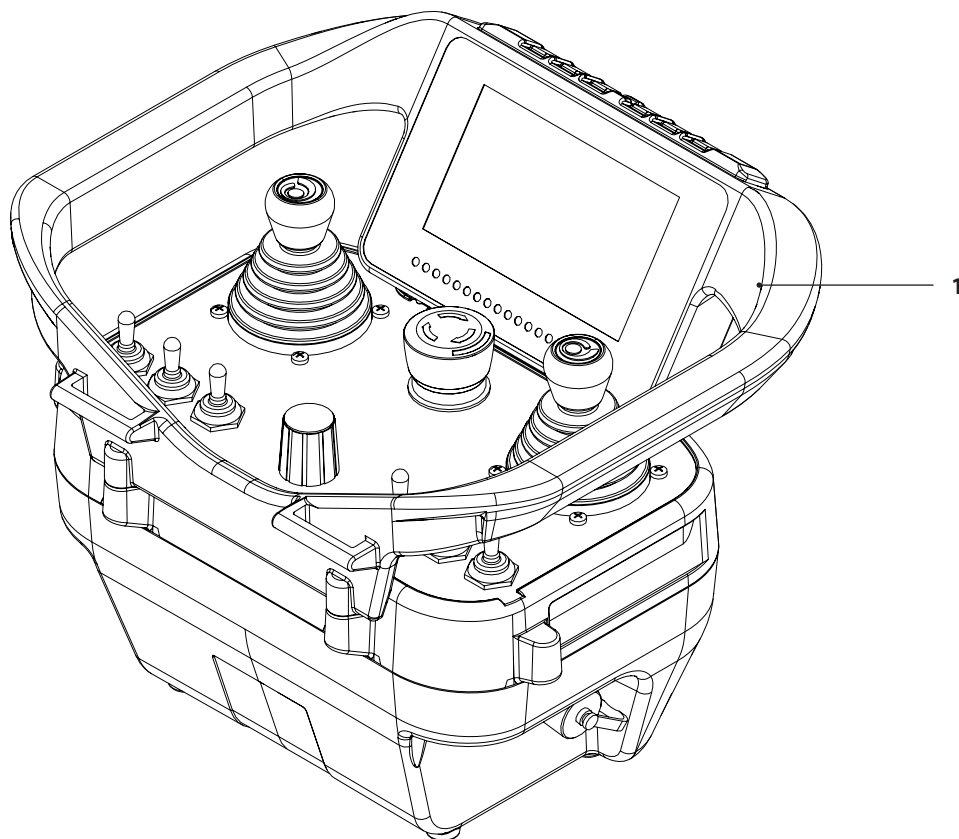


005044-1010-00

Kit telecomando

TAB.	S.Groupe	REV.	Pag.
33	-	0	1/1

ALMACRAWLER 



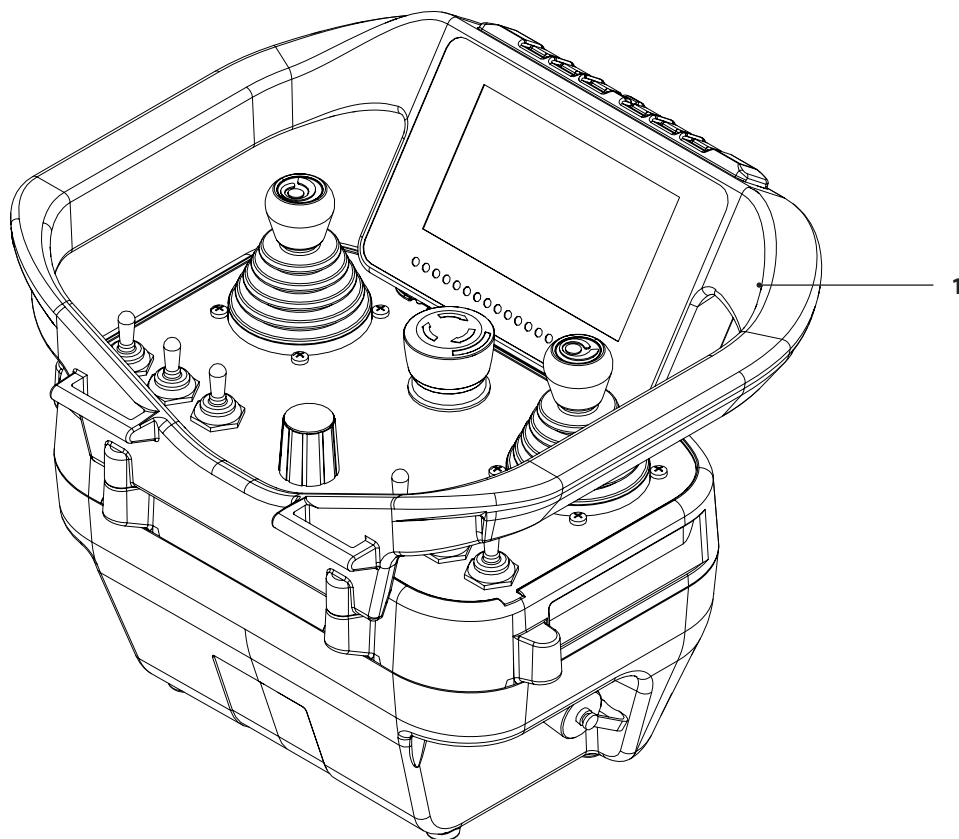
005045-1010-00

Kit radiocomando JIBBI 1250

TAB.	S.Groupe	REV.	Pag.
------	----------	------	------

34	-	0	1/1
----	---	---	-----

ALMACRAWLER 

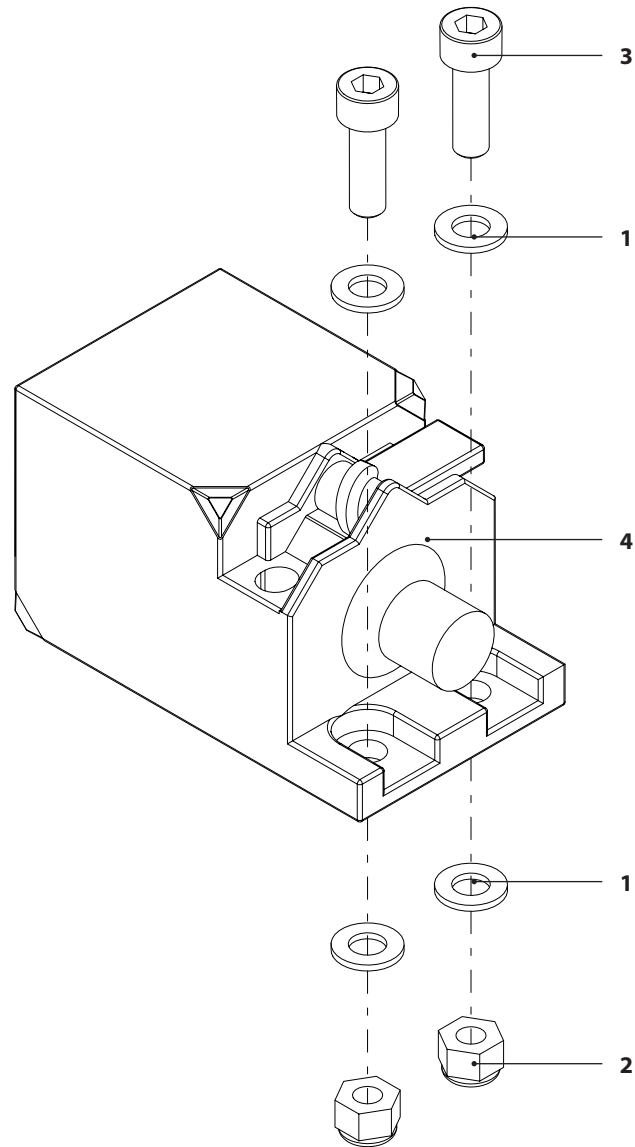


005115-1010-00

Kit antischiacciamento

ALMACRAWLER 

TAB.	S.Groupe	REV.	Pag.
35	-	0	1/1

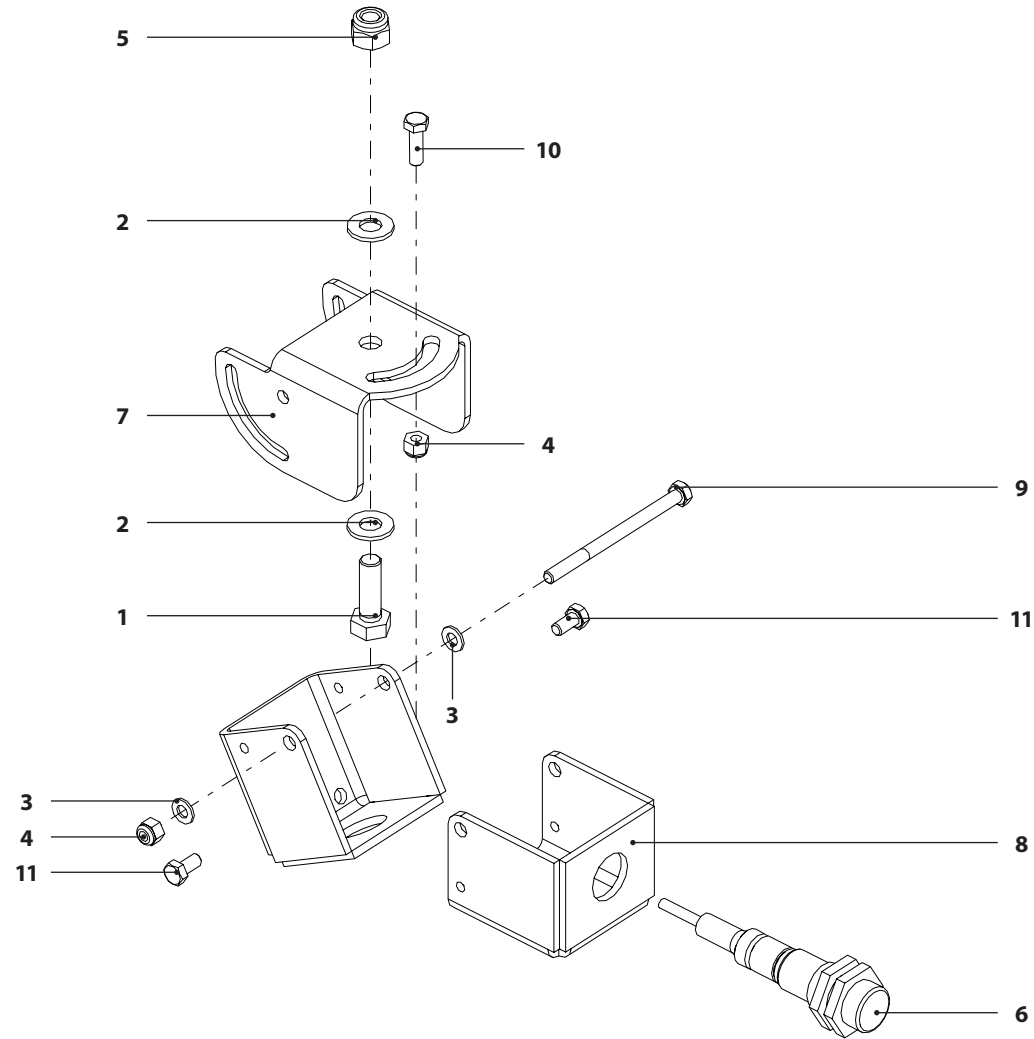


005241-1010-00

Kit anticollisione

ALMACRAWLER 

TAB.	S.Groupe	REV.	Pag.
36	-	0	1/1



005107-1010-00

Assieme quadro comandi a terra

ALMACRAWLER 

TAB.	S.Groupe	REV.	Pag.
37	-	0	1/1

