

ALMACRAWLER



YR[®]

MULTILOADER 6.0



CATALOGO PARTI DI RICAMBIO



CATALOGUE DES PIECES DE RECHANGE



ERSATZTEILKATALOG



SPARE PARTS CATALOGUE



CATALOGO DE PIEZAS DE REPUESTO



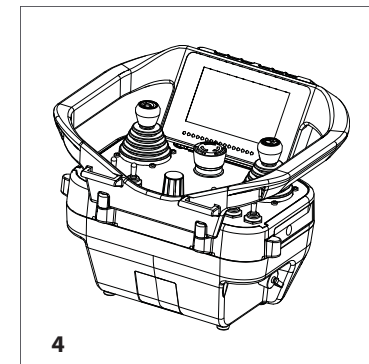
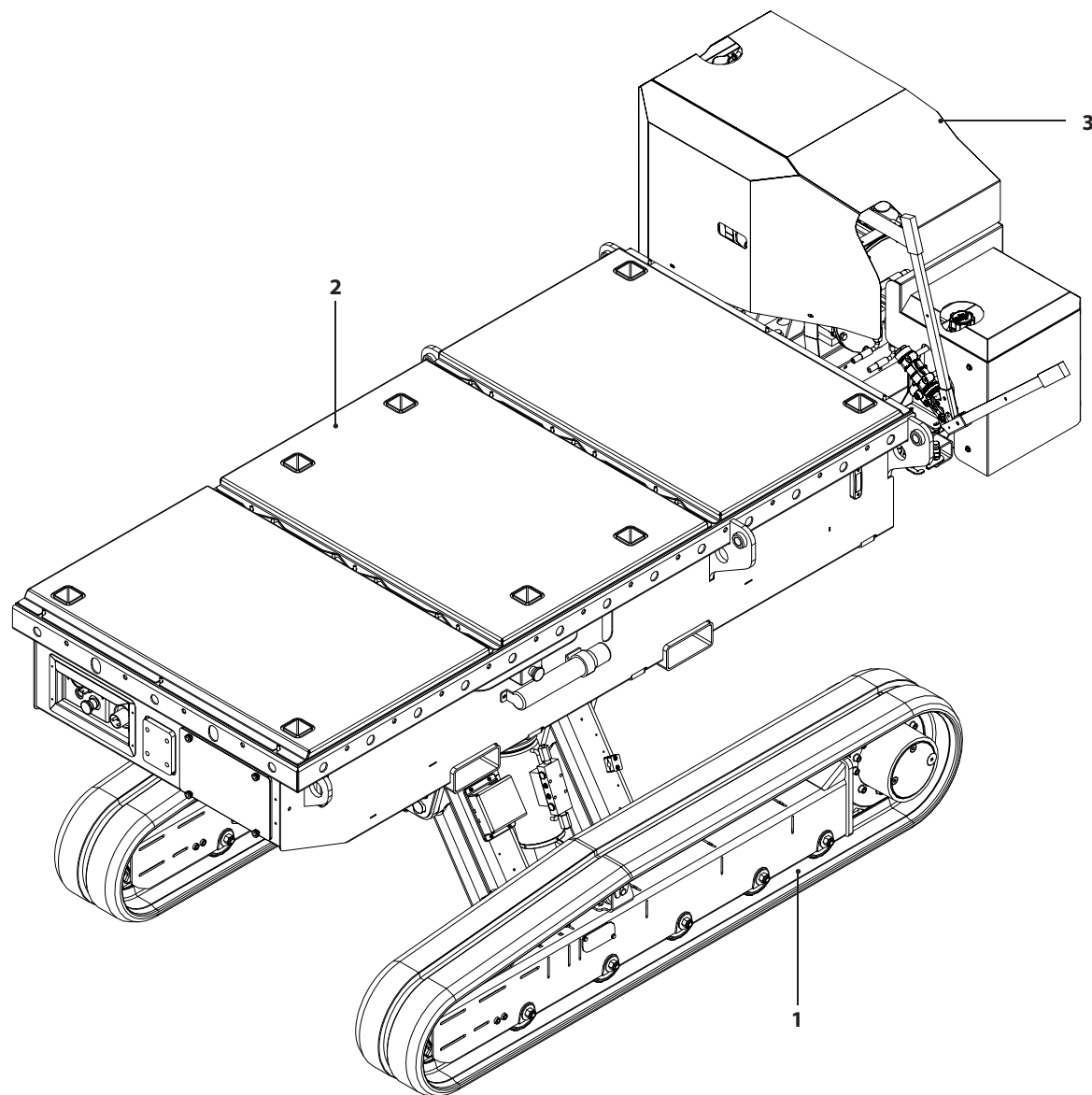
Ed.: 00/2021 del 16/07/2021

006650-0010-00

Assieme MULTILOADER 6.0

TAB.	S.Groupe	REV.	Pag.
0	-	0	1/2

ALMACRAWLER 

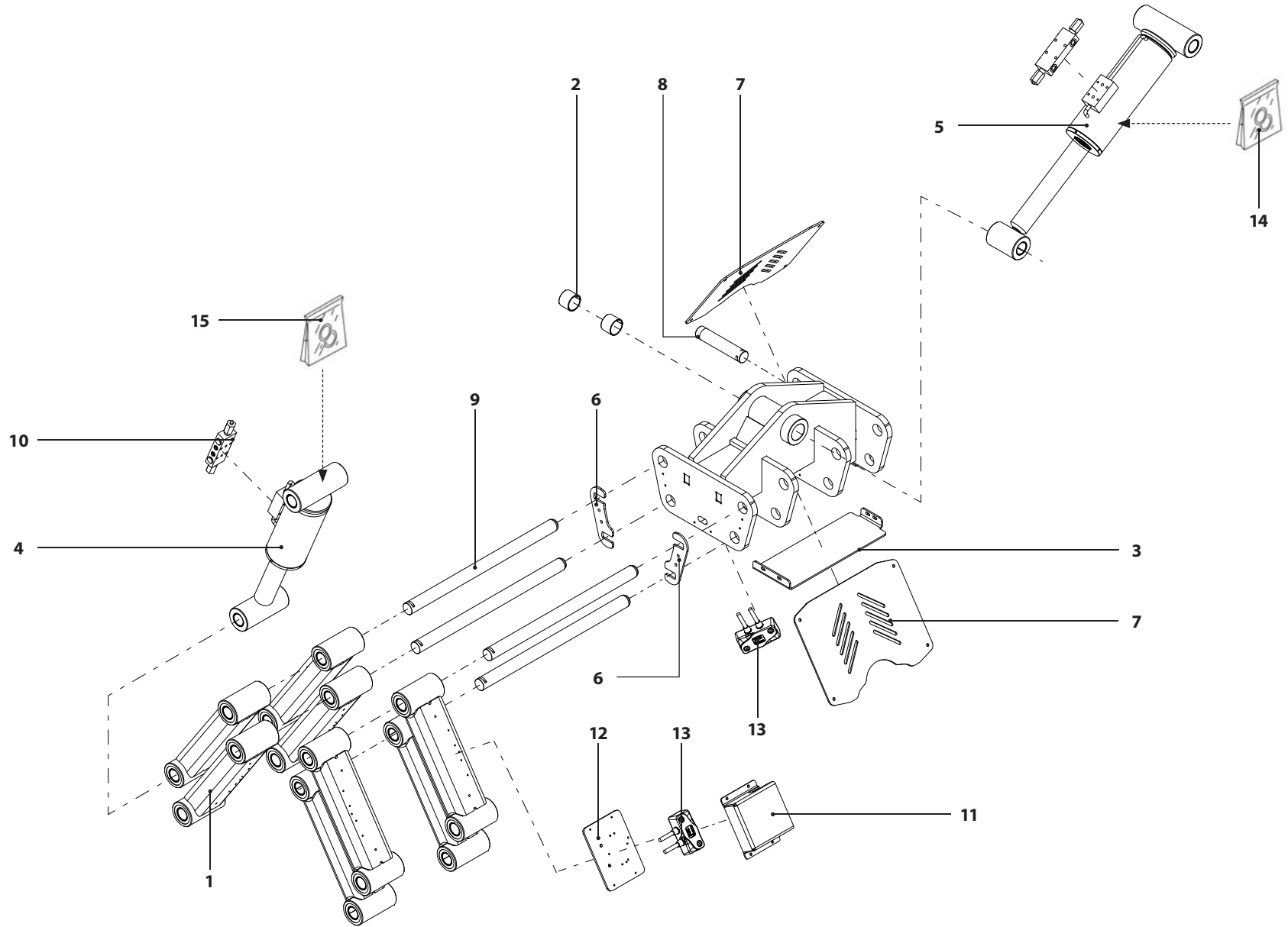


006651-1010-00

Assieme bielle

ALMACRAWLER 

TAB.	S.Groupe	REV.	Pag.
1	-	0	1/12

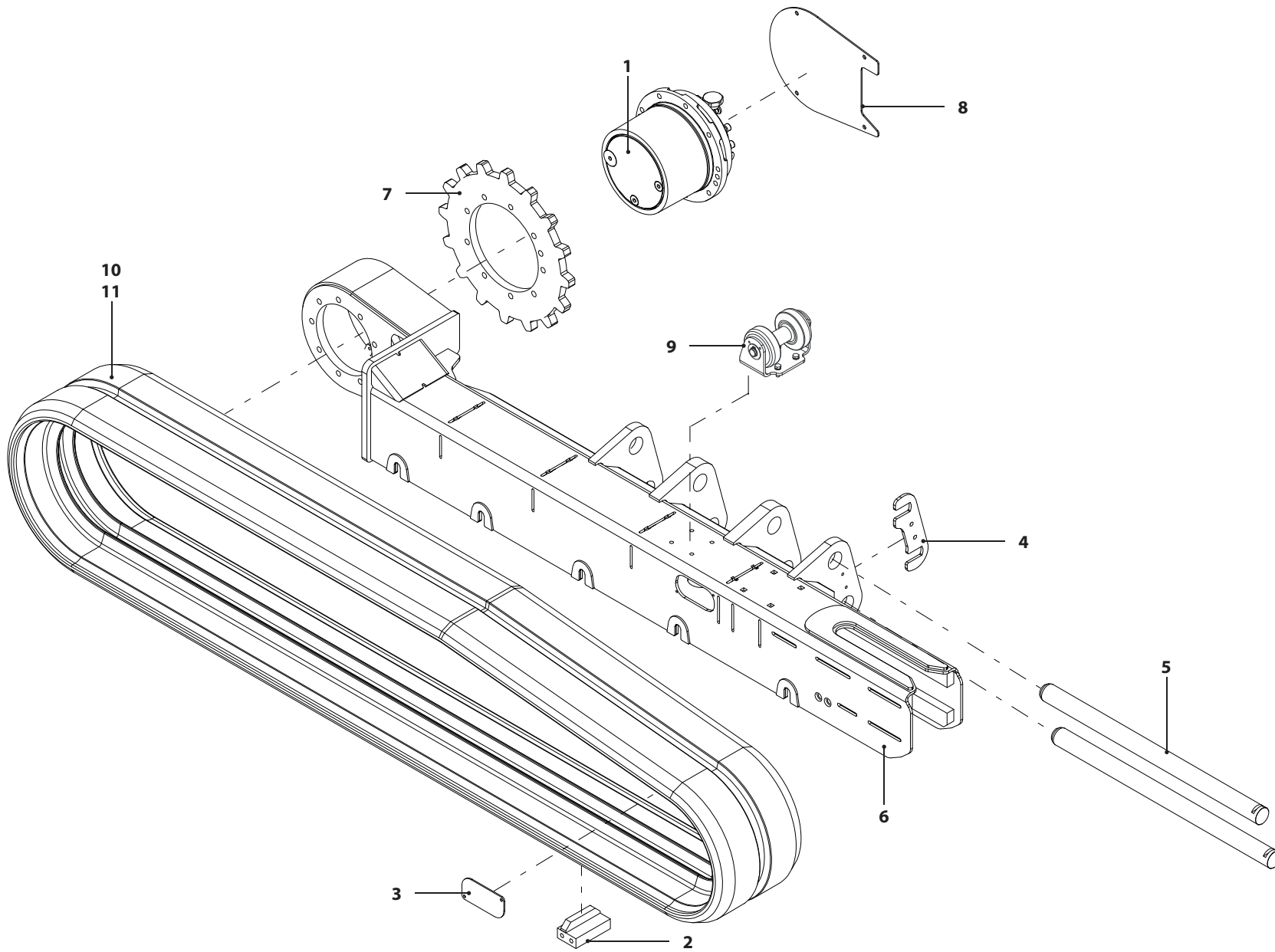


006651-1010-00

Assieme semicarro DX

ALMACRAWLER 

TAB.	S.Groupe	REV.	Pag.
1	006598	0	3/12



006651-1010-00

Assieme semicarro SX

ALMACRAWLER 

TAB.

S.Groupe

REV.

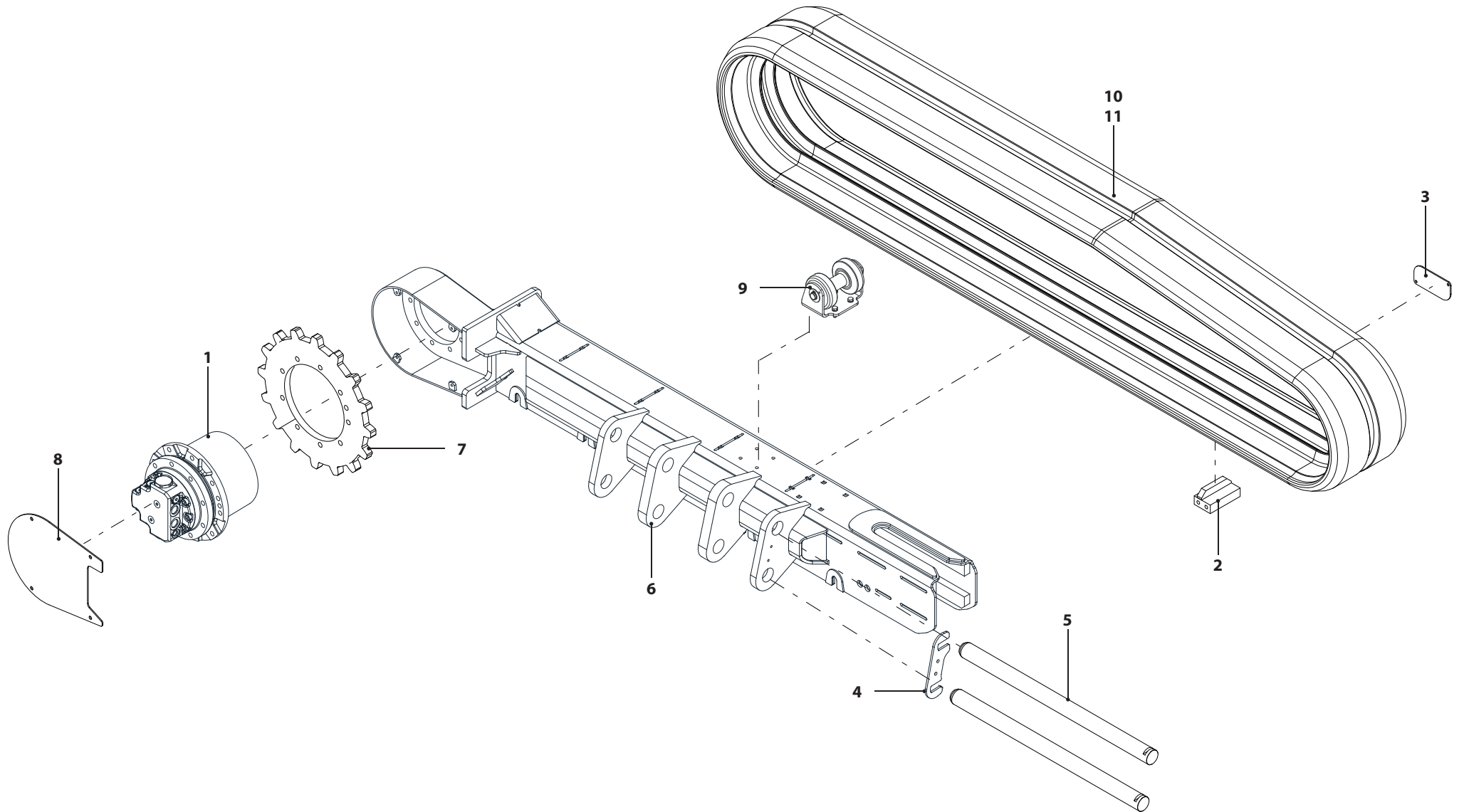
Pag.

1

006597

0

5/12

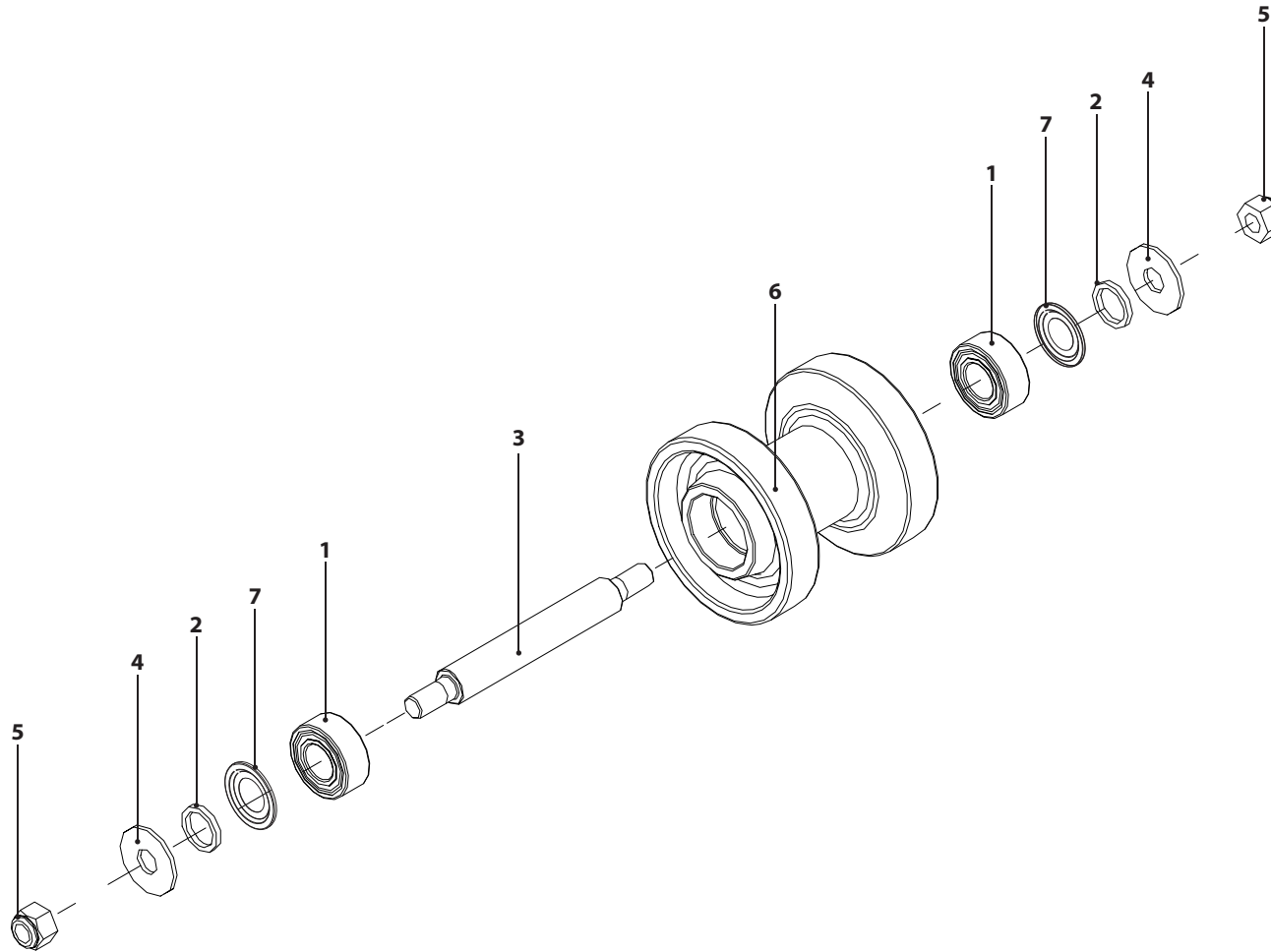


006651-1010-00

Assieme carro - Rullo (A) - PREM-000006-01-FK



TAB.	S.Groupe	REV.	Pag.
1	005082	0	7/12



006651-1010-00

Assieme carro - Tendicingolo (B)

ALMACRAWLER 

TAB.

S.Groupe

REV.

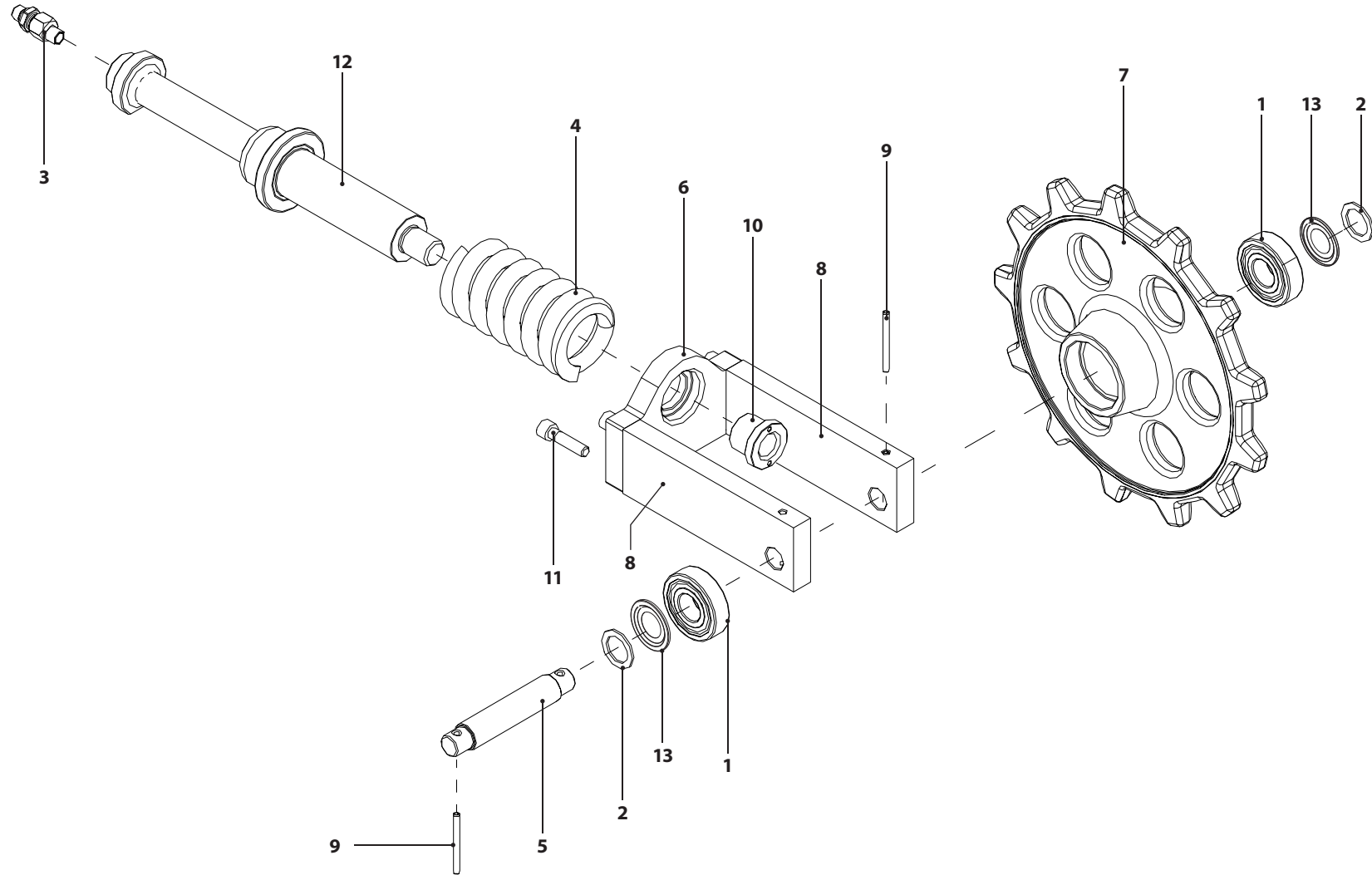
Pag.

1

005083

0

9/12

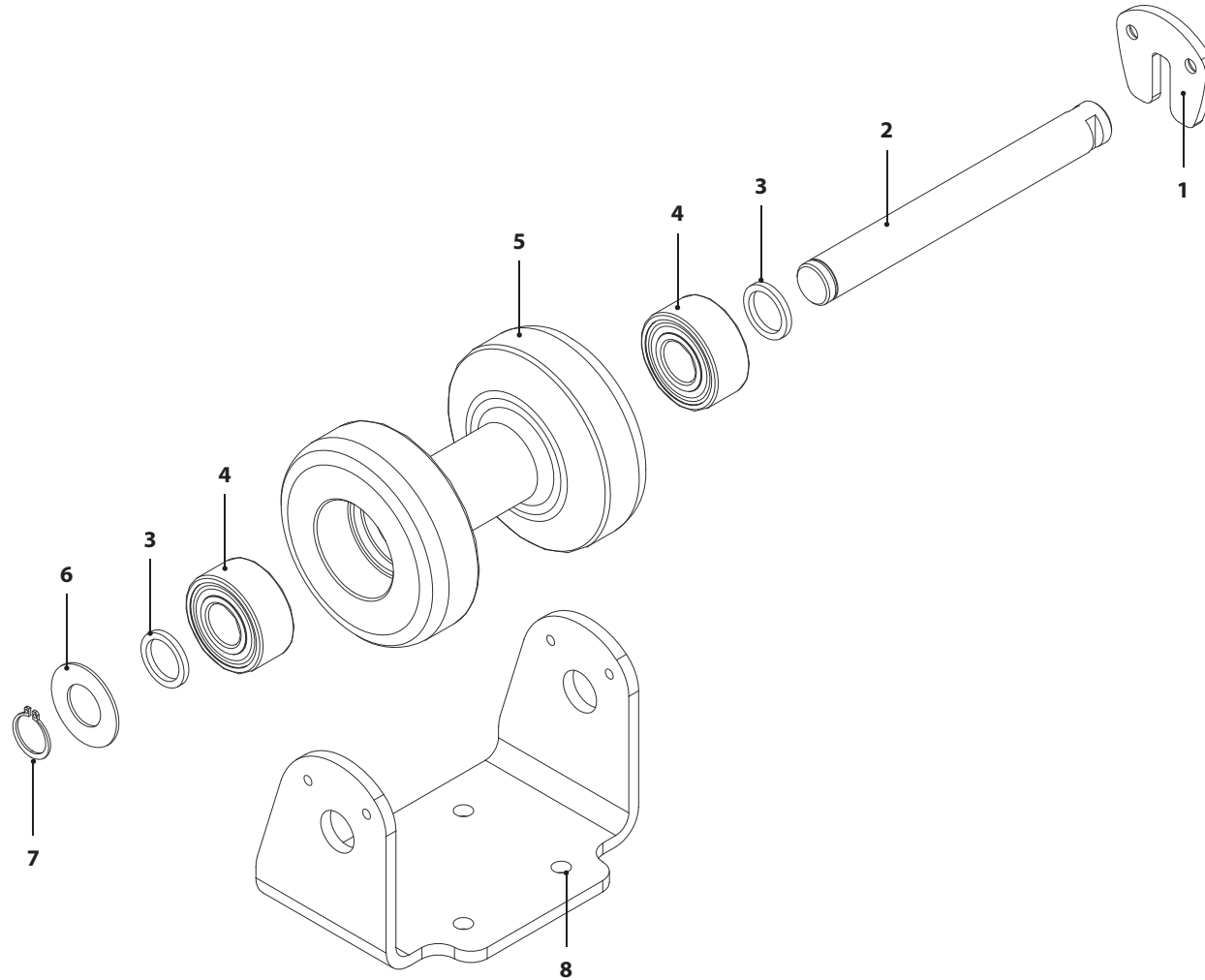


006651-1010-00

Assieme rullo superiore

ALMACRAWLER 

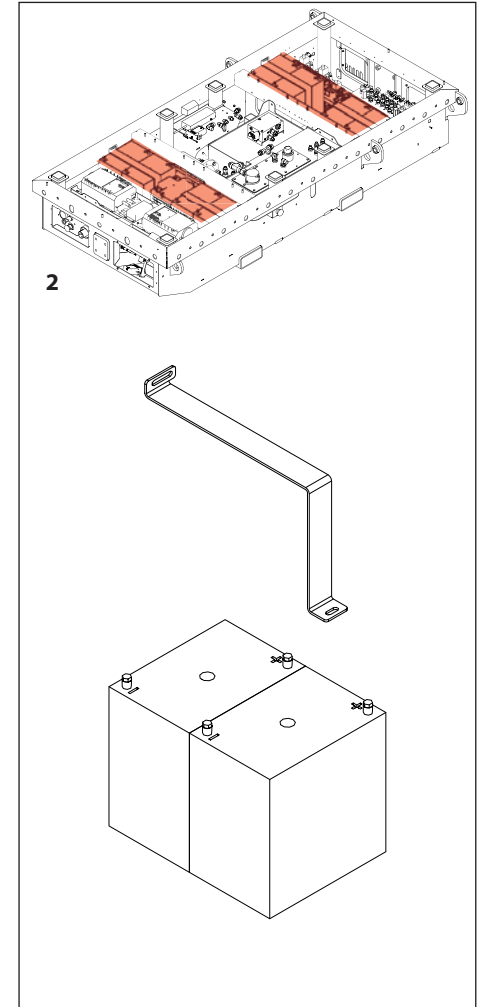
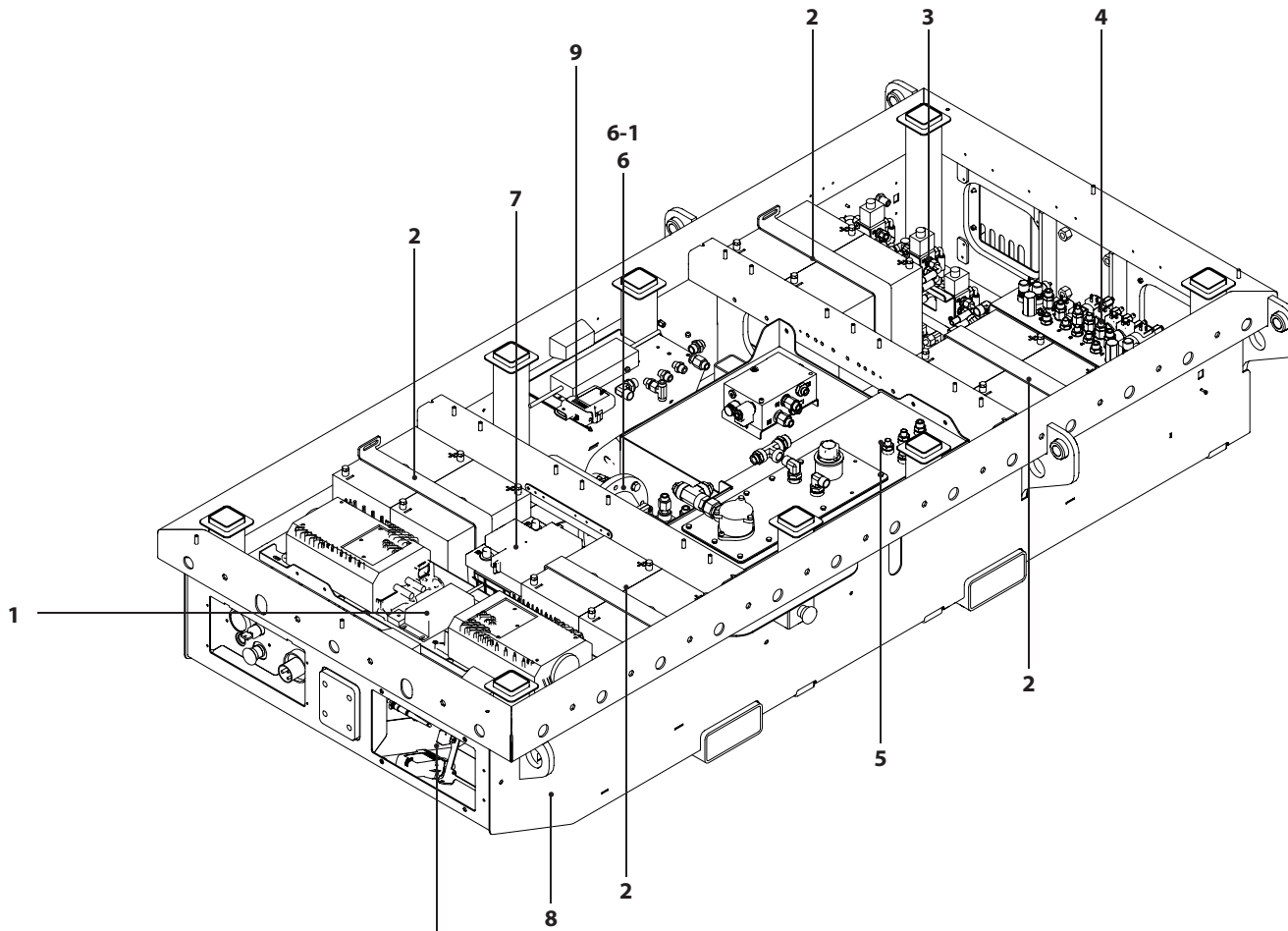
TAB.	S.Groupe	REV.	Pag.
1	006635	0	11/12



006659-1010-00

Assieme vasca

TAB.	S.Groupe	REV.	Pag.
2	-	0	1/22

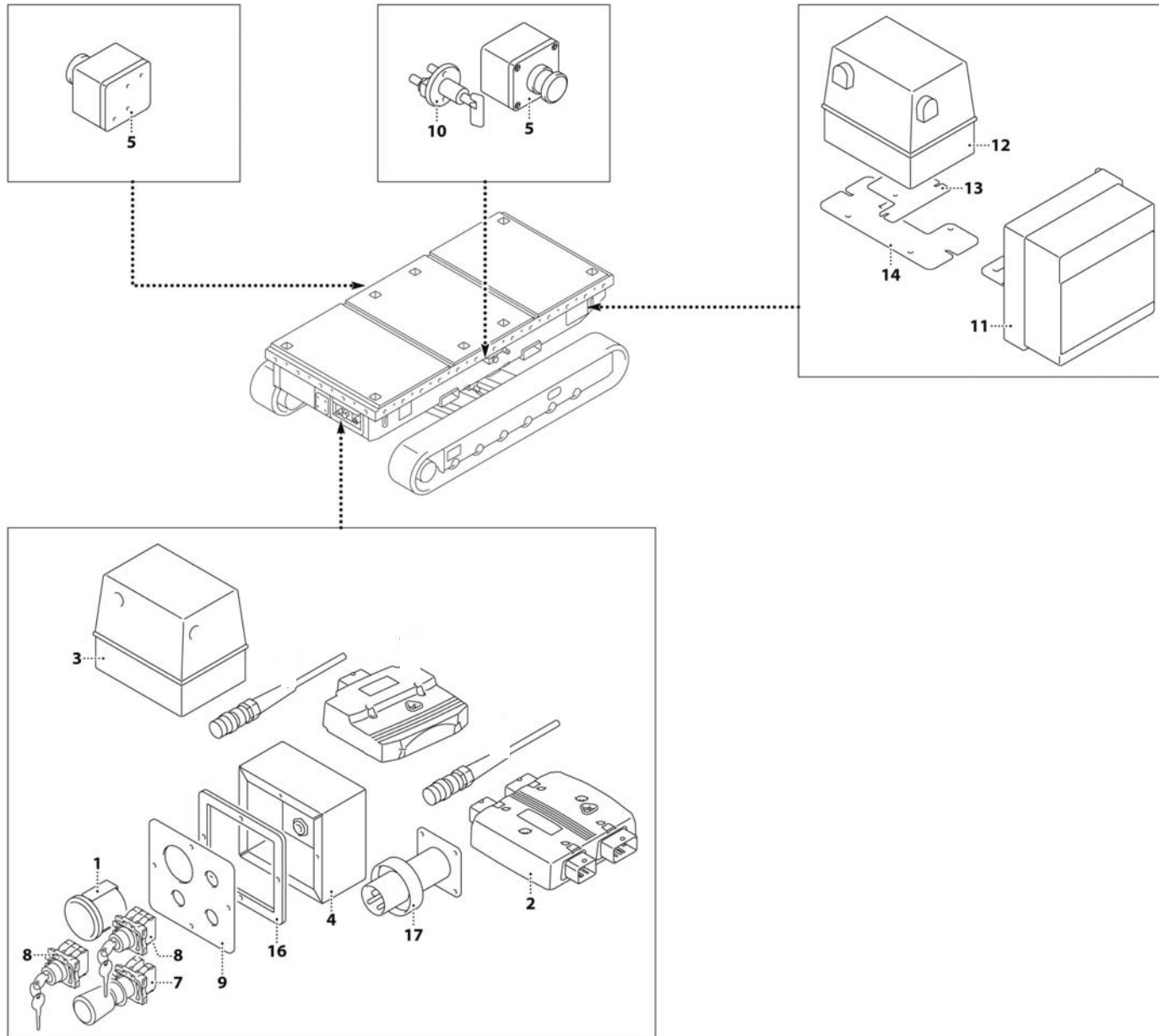


006659-1010-00

Assieme vasca

ALMACRAWLER 

TAB.	S.Groupe	REV.	Pag.
2	-	0	3/22

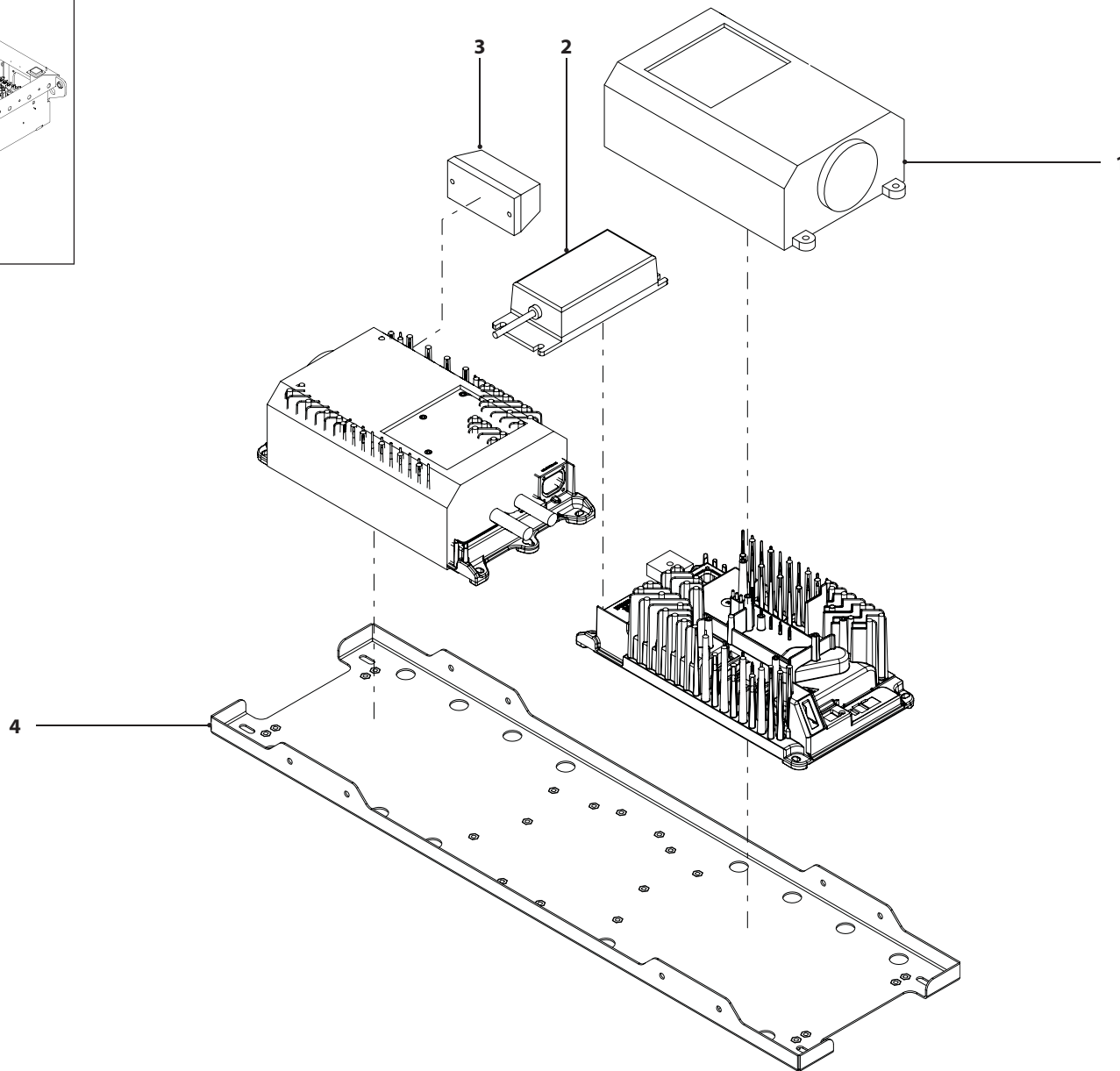
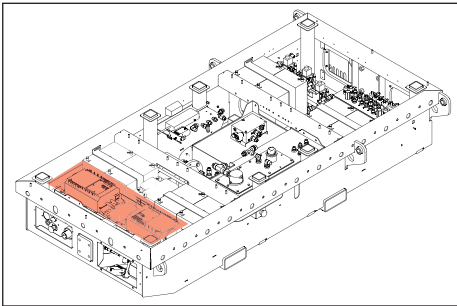


006659-1010-00

Assieme caricabatteria (ELC-BIE)

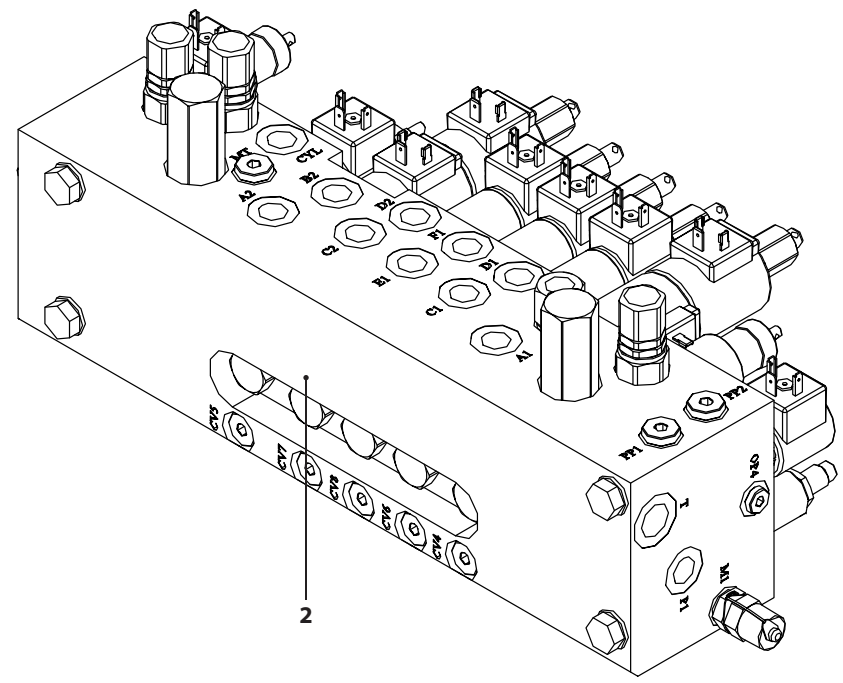
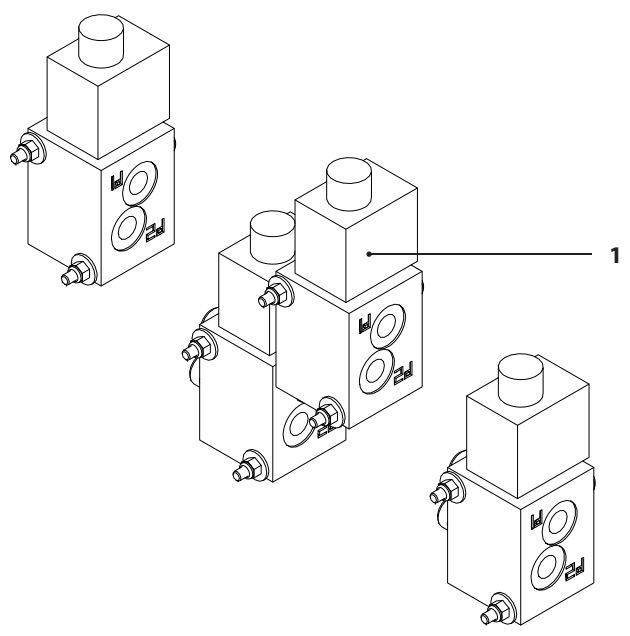
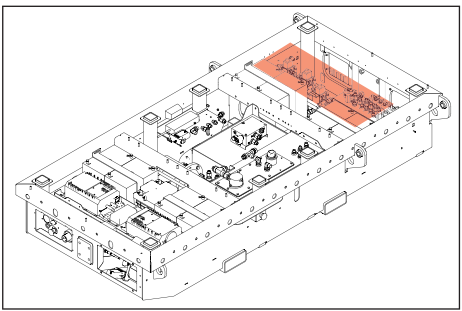
ALMACRAWLER 

TAB.	S.Groupe	REV.	Pag.
2	007004	0	5/22



006659-1010-00-BIE			
TAB.	S.Groupe	REV.	Pag.
2	006775 006776	0	7/22

Assieme elettrovalvole (06775-1010-00)
Assieme distributore (06776-1010-00)

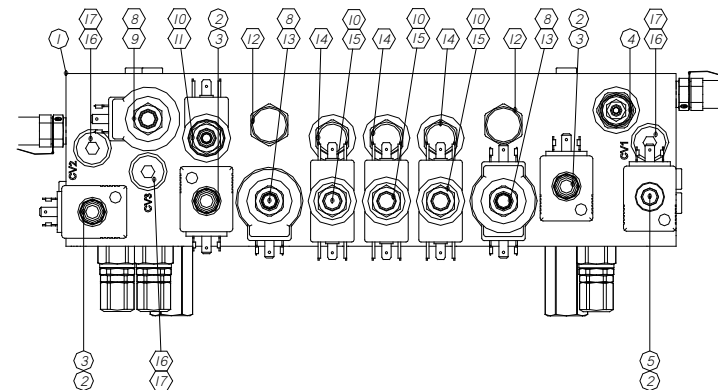
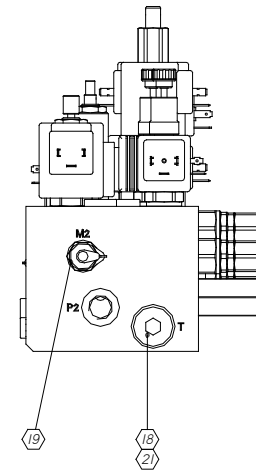
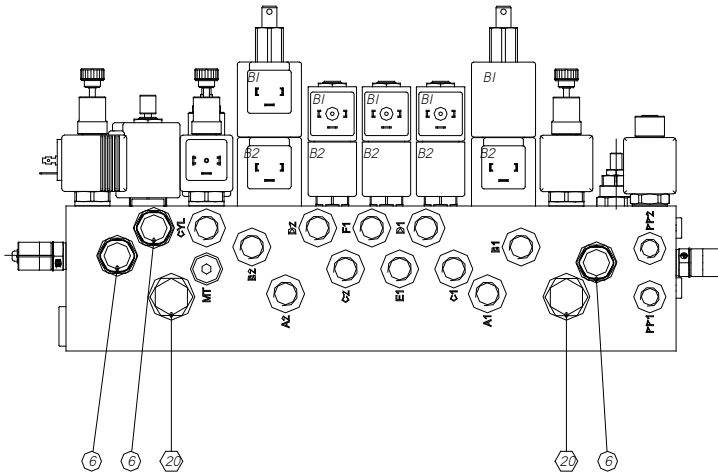
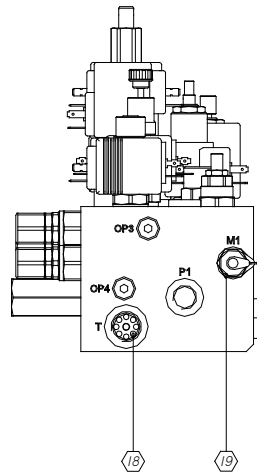
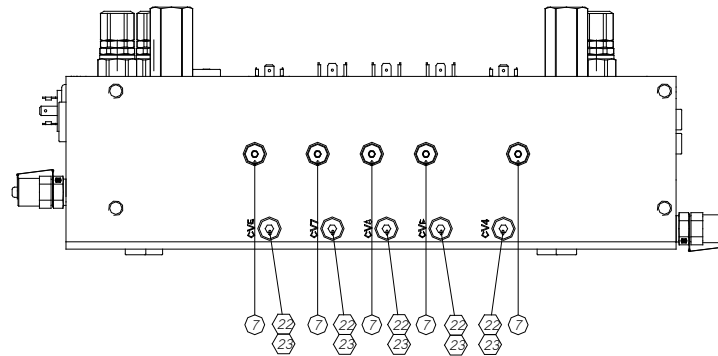
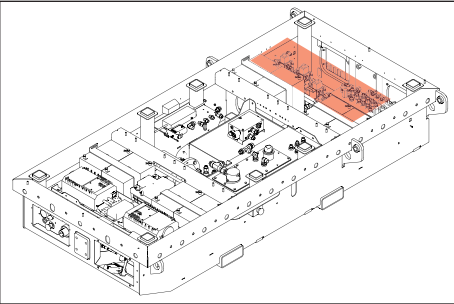


006659-1010-00-BIE

Gruppo idraulico

ALMACRAWLER 

TAB.	S.Groupe	REV.	Pag.
2	002569	0	9/22



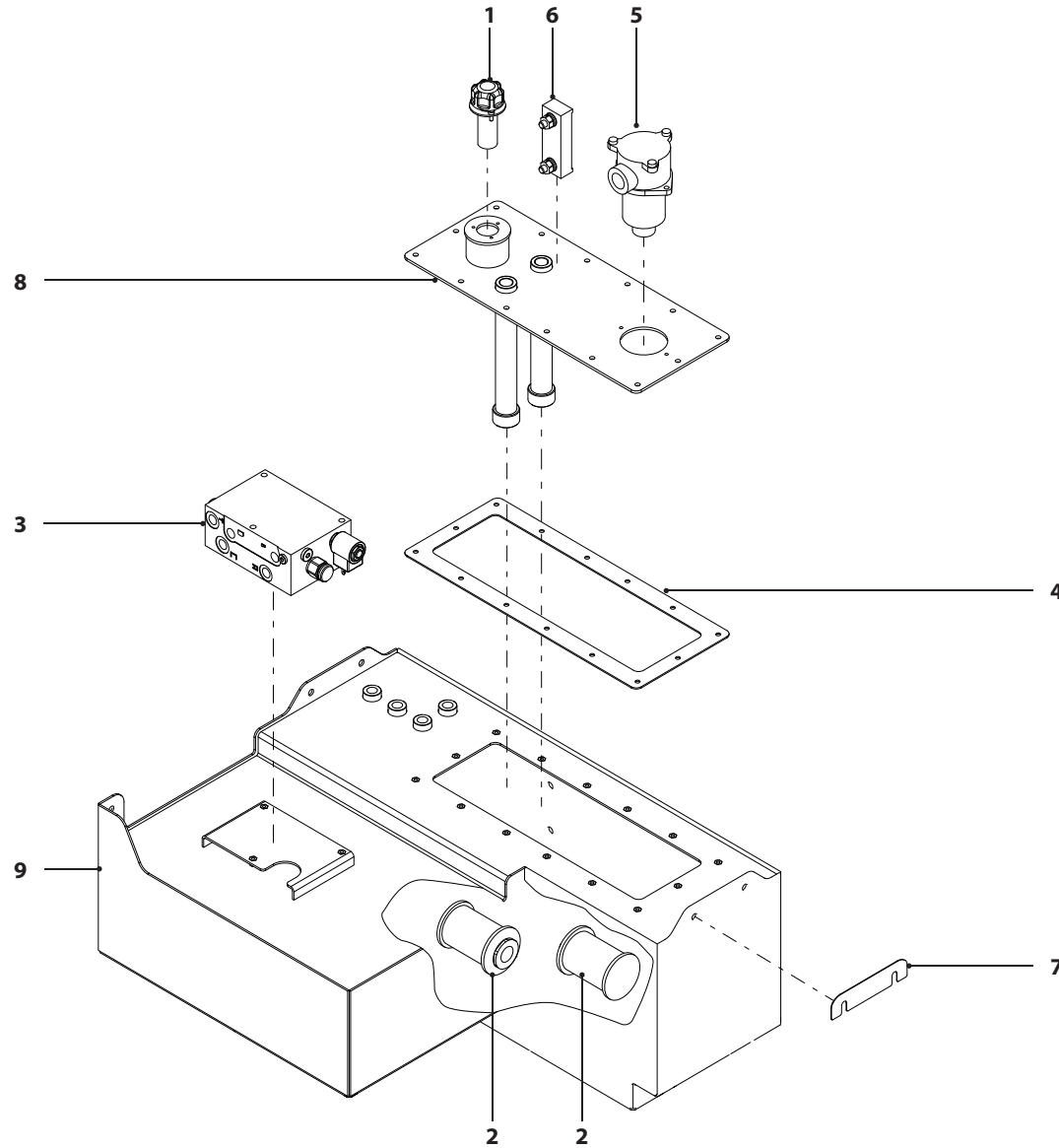
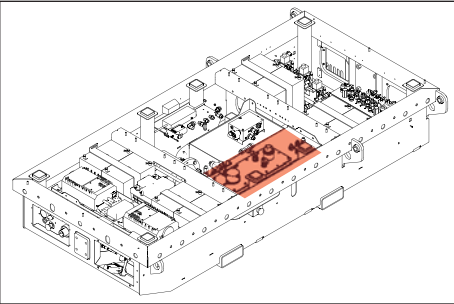
Da Febbraio 2020
 From February 2020
 Desde febrero 2020
 Ab Februar 2020
 À partir de février 2020

006659-1010-00

Assieme serbatoio olio

ALMACRAWLER 

TAB.	S.Groupe	REV.	Pag.
2	006660	0	11/22

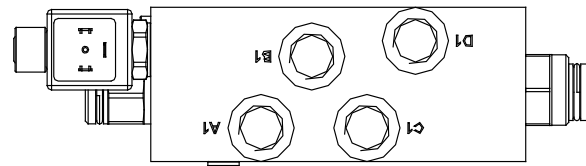
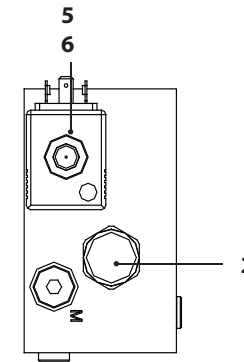
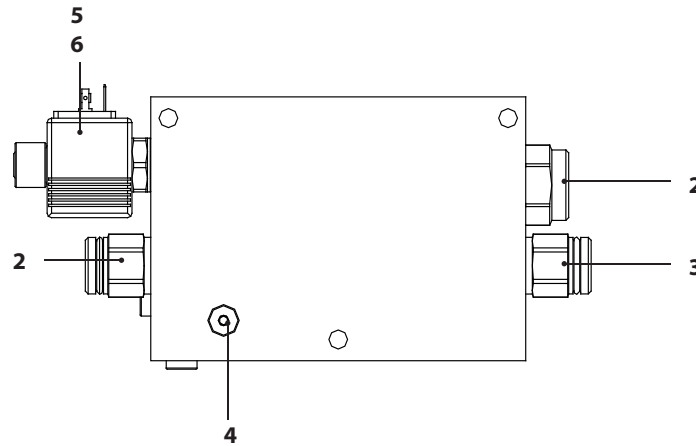
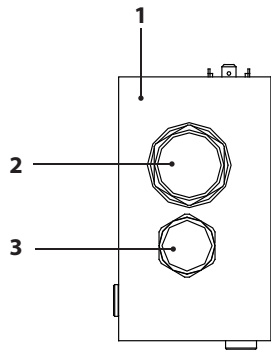
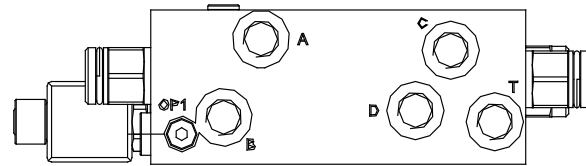


006659-1010-00

Booster

ALMACRAWLER 

TAB.	S.Groupe	REV.	Pag.
2	000515	0	13/22



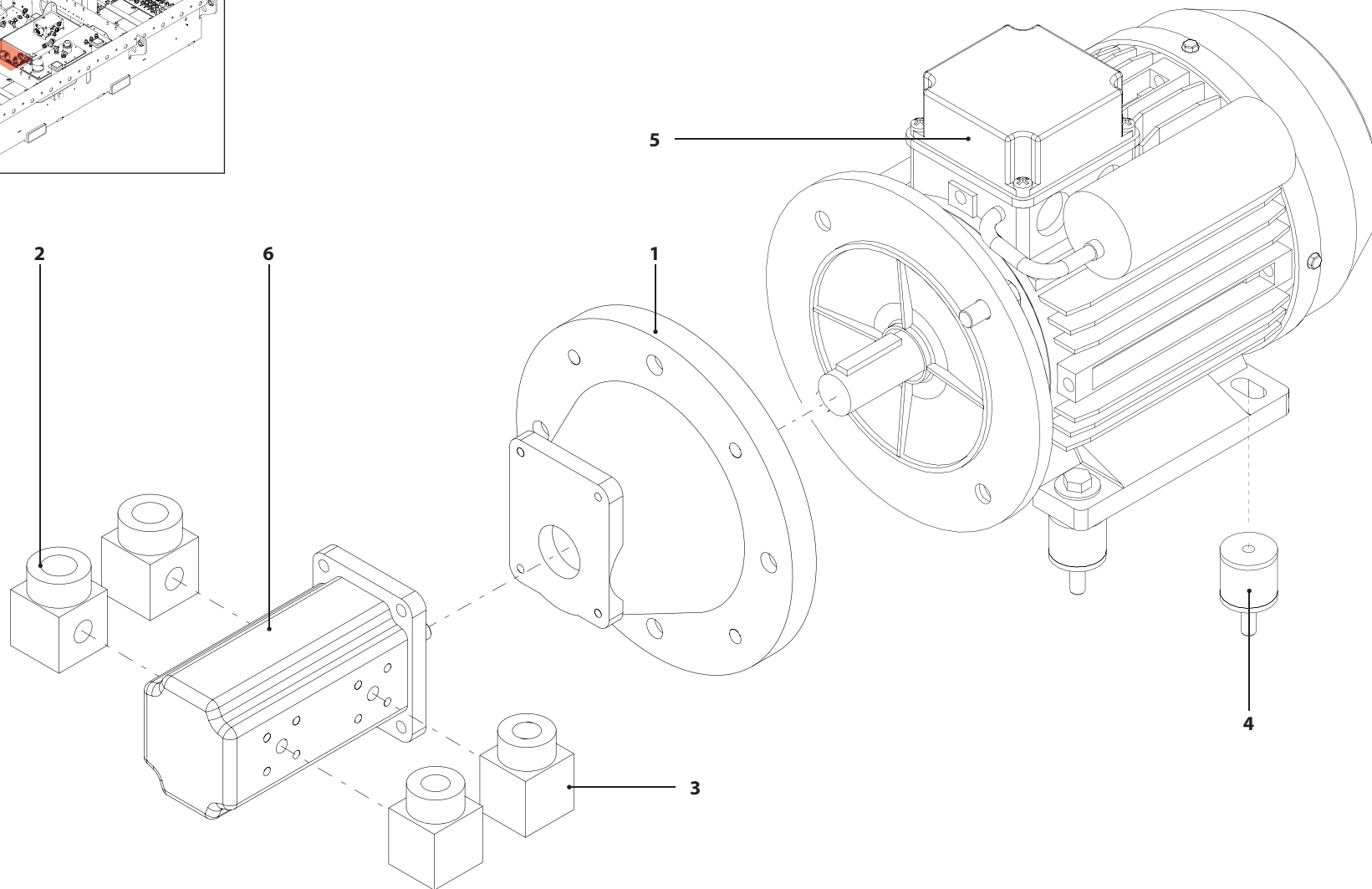
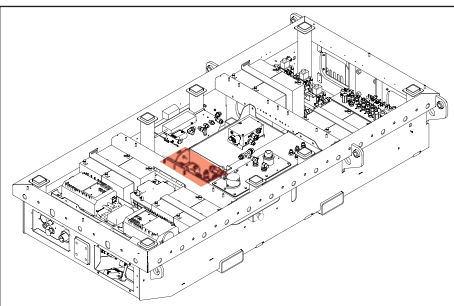
Da Febbraio 2020
From February 2020
Desde febrero 2020
Ab Februar 2020
À partir de février 2020

006659-1010-00

Asieme motore elettrico 220-110V - (EVO)

ALMACRAWLER 

TAB.	S.Groupe	REV.	Pag.
2	005858	0	15/22

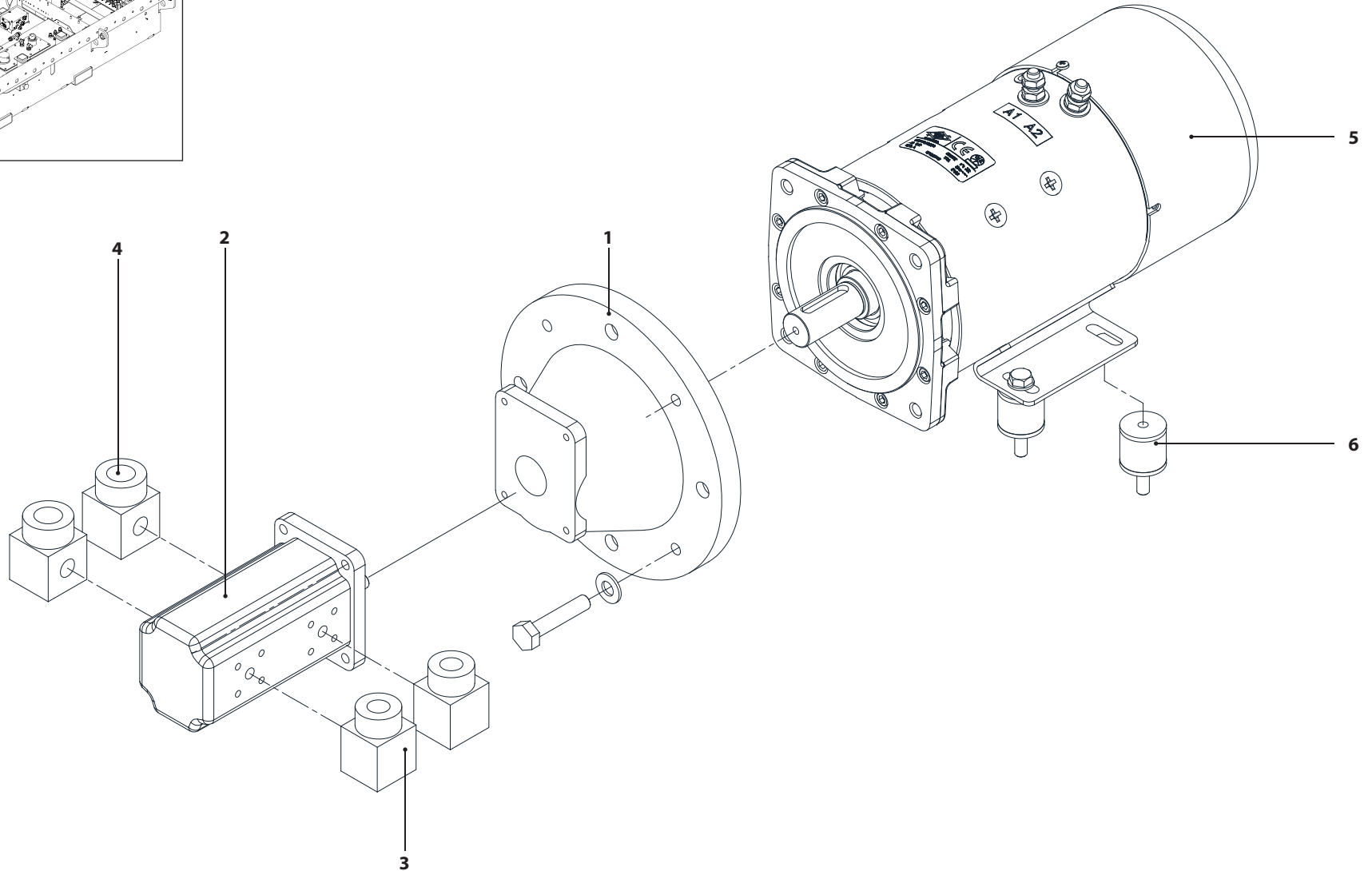
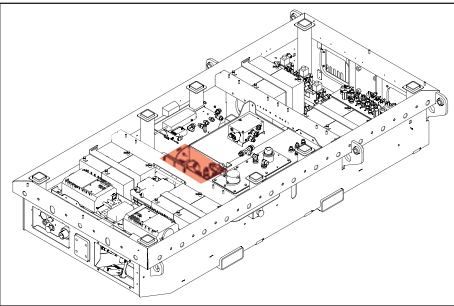


006659-1010-00

Asieme motore elettrico 48V (ELC-BIE)

ALMACRAWLER 

TAB.	S.Groupe	REV.	Pag.
2	005858	0	17/22

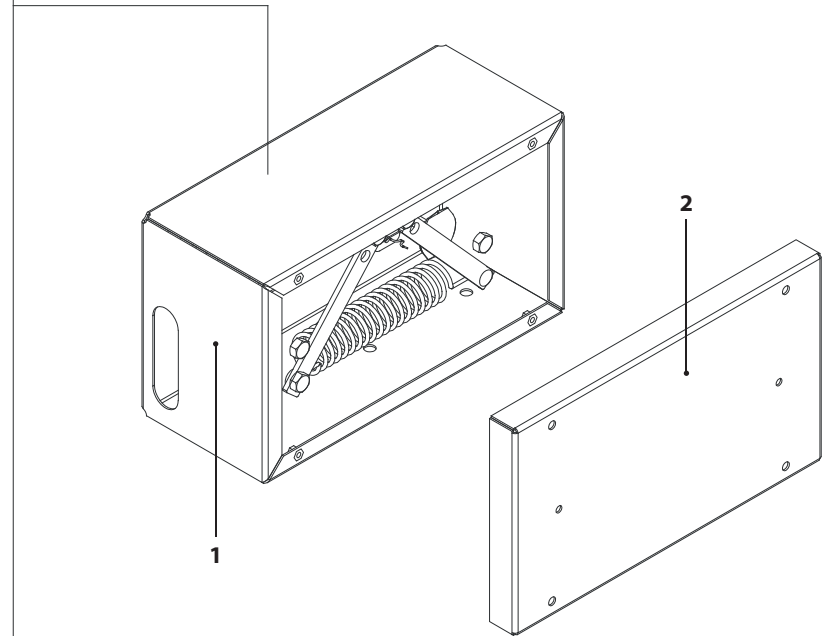
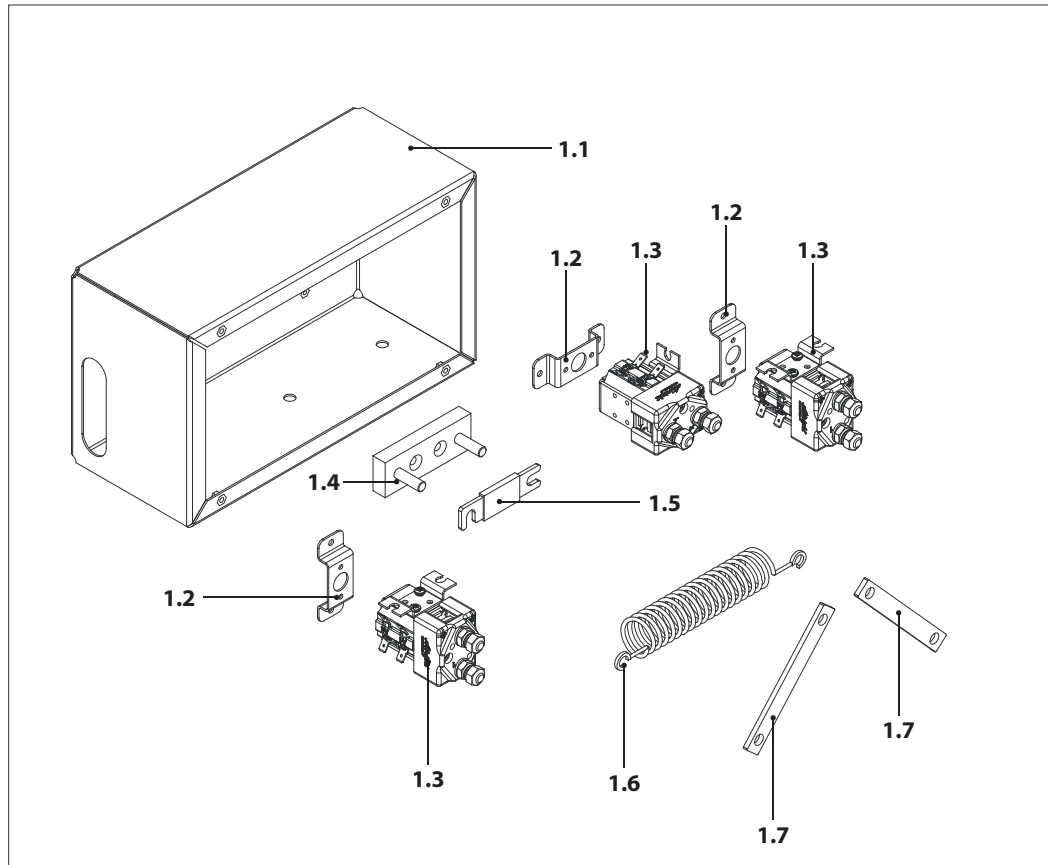
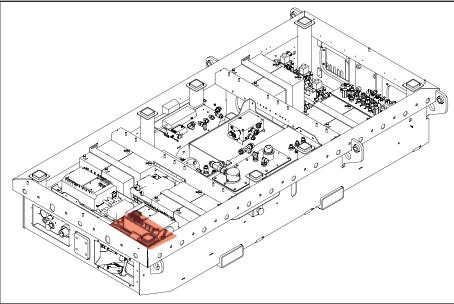


006659-1010-00

Assieme teleruttori (ELC-BIE)

ALMACRAWLER 

TAB.	S.Groupe	REV.	Pag.
2	004487	0	19/22

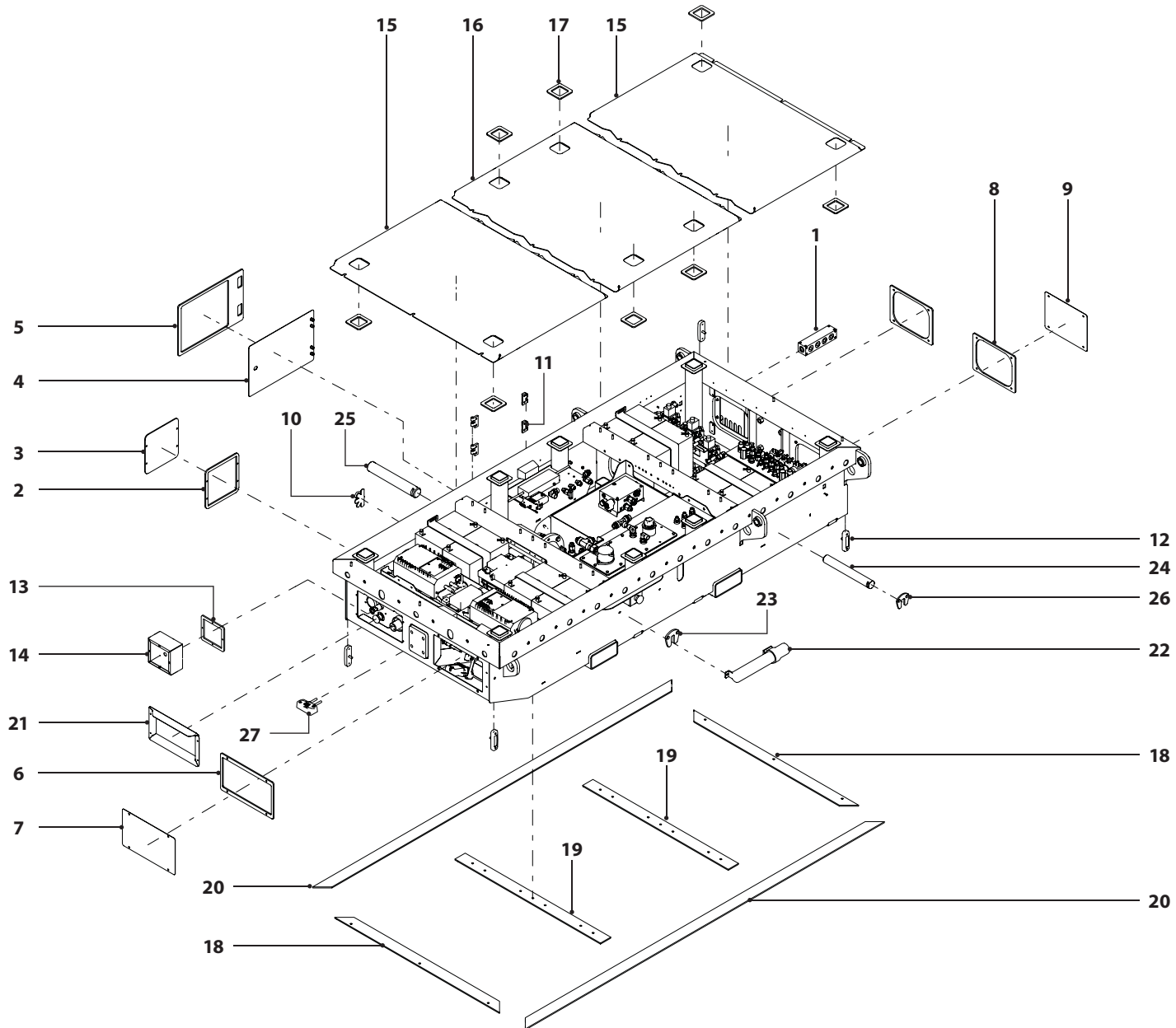


006659-1010-00

Assieme vasca MULTILOADER 6.0

ALMACRAWLER 

TAB.	S.Groupe	REV.	Pag.
2	-	0	21/22

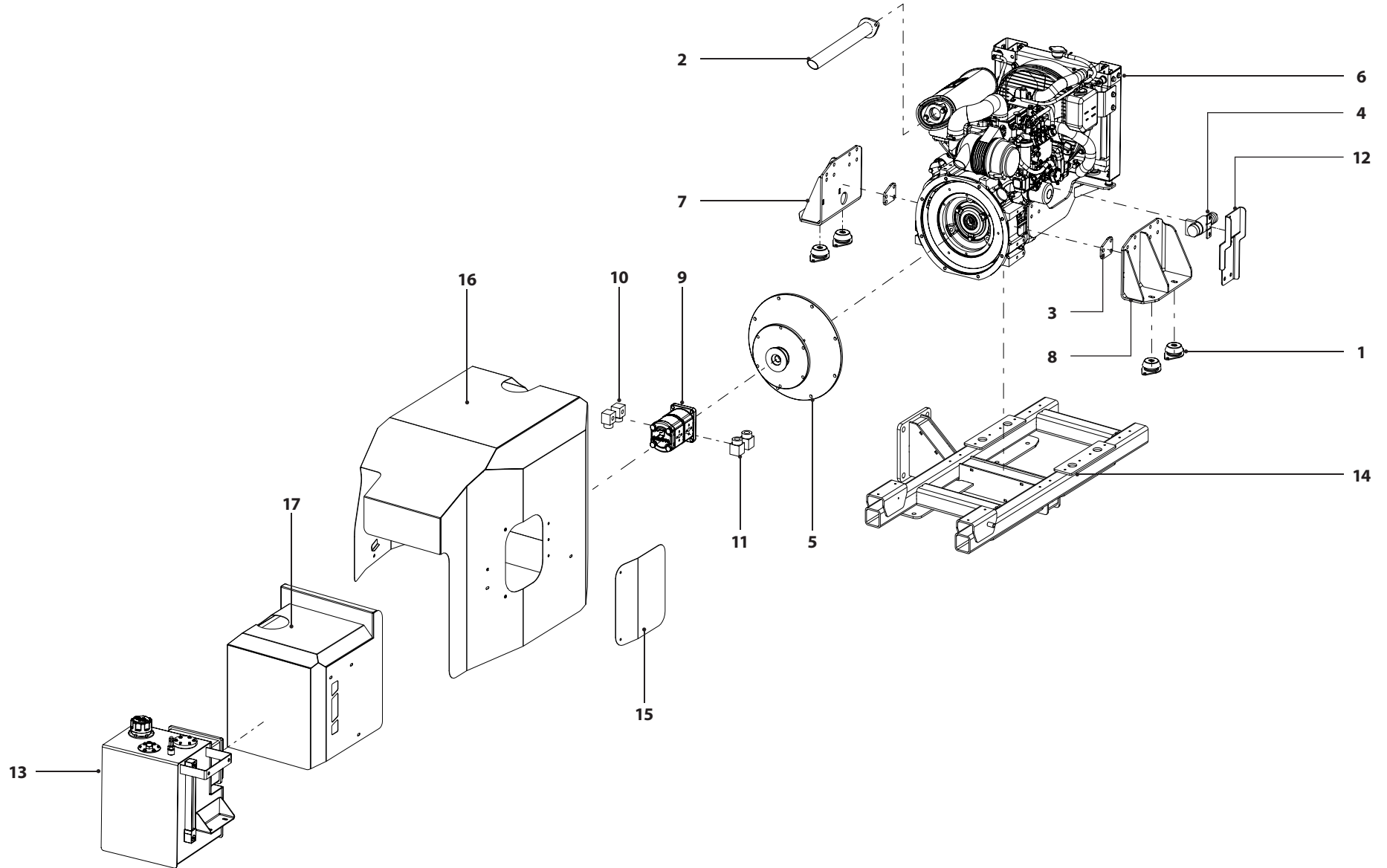


008356-1010-00

Kit Power pack ALMAC Yanmar 3TNM68



TAB.	S.Groupe	REV.	Pag.
3	-	0	1/12

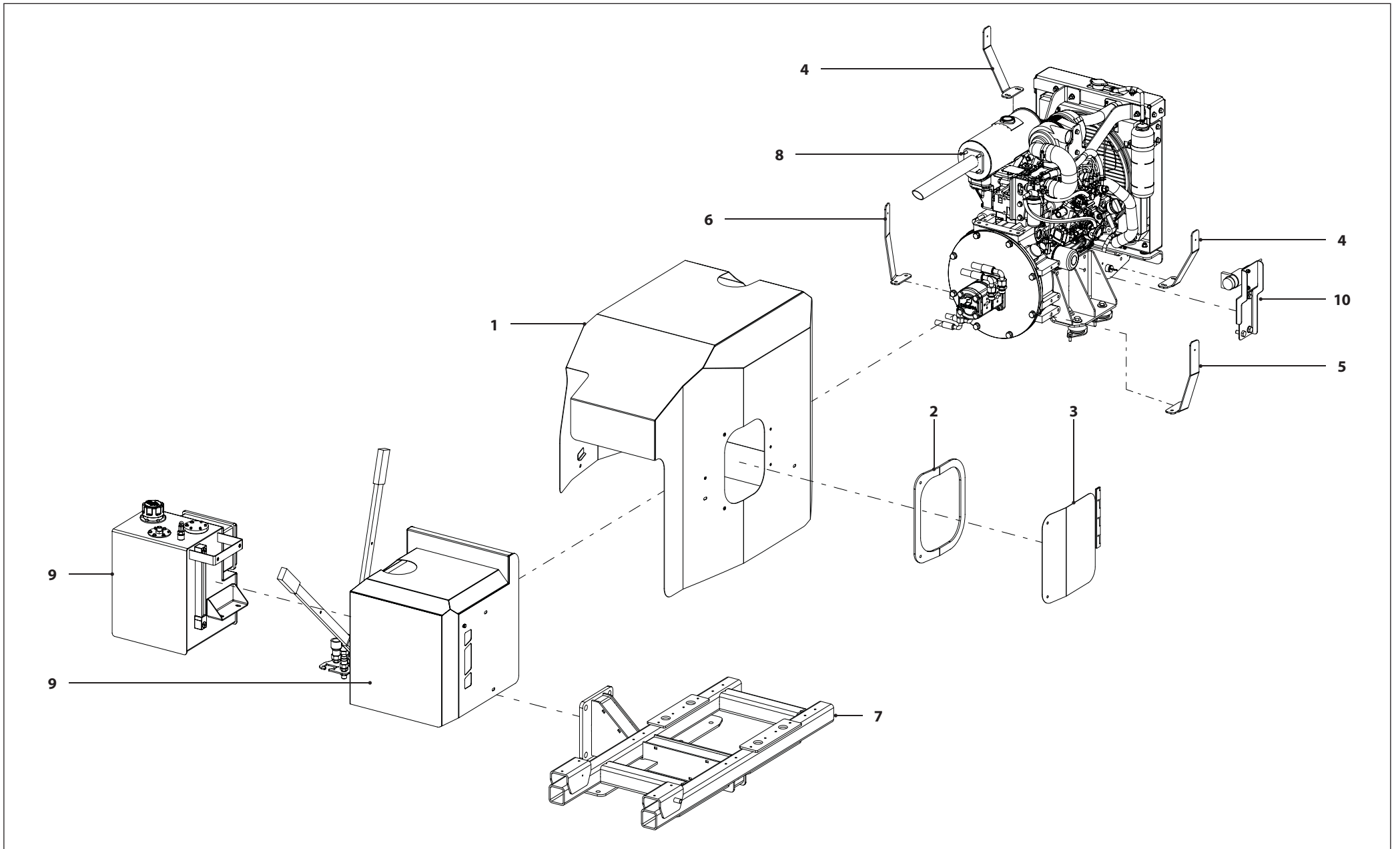


008337-1010-00

Kit Power pack ALMAC Yanmar 3TNV74F

ALMACRAWLER 

TAB.	S.Groupe	REV.	Pag.
3	-	0	3/12

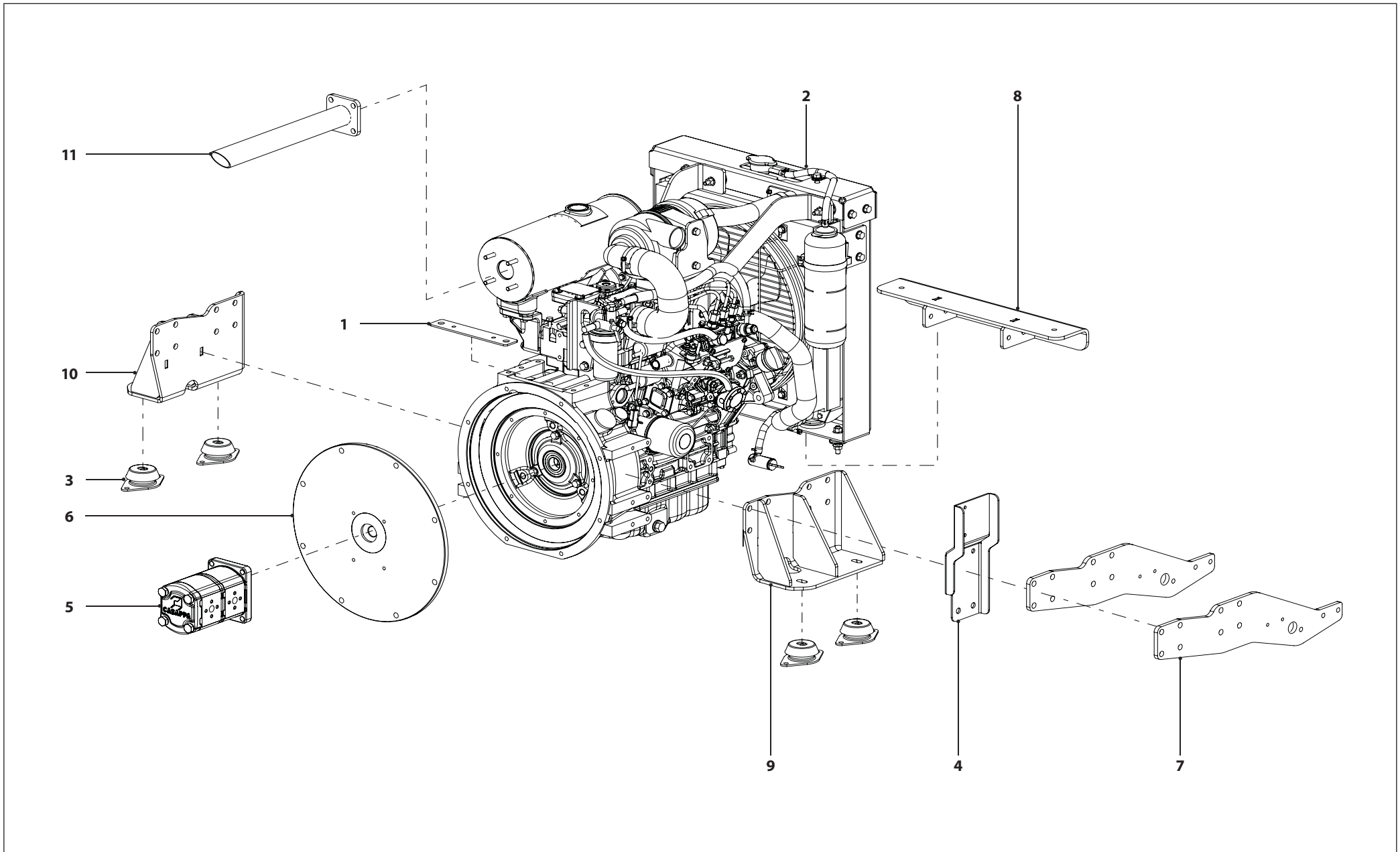


008337-1010-00

Kit Power pack ALMAC Yanmar 3TNV74F

ALMACRAWLER 

TAB.	S.Groupe	REV.	Pag.
3	008328	0	5/12

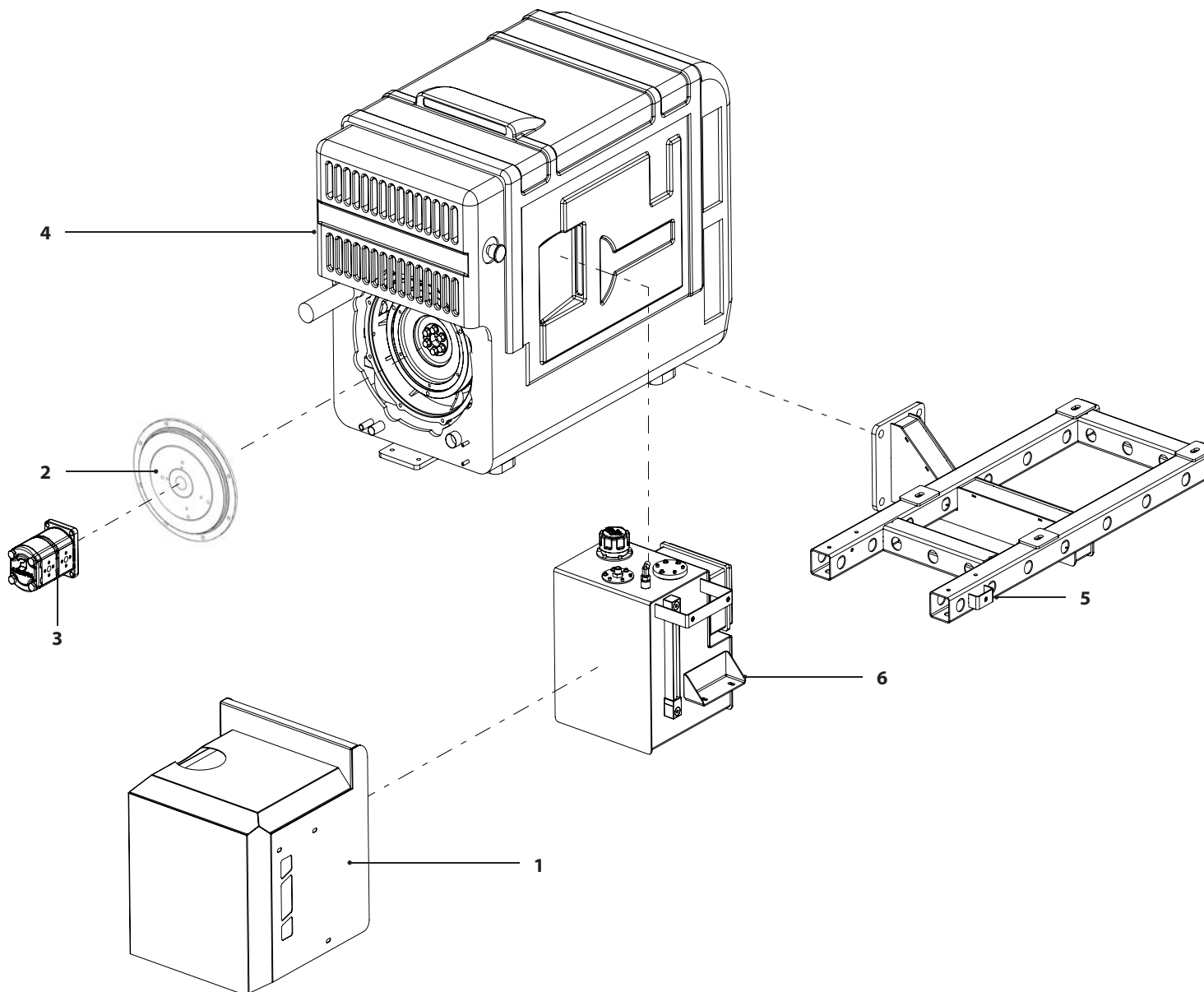


006643-1010-00

Kit Power Pack

TAB.	S.Groupe	REV.	Pag.
3	-	0	7/12

ALMACRAWLER 



006659-1010-00

Kit Pompa a mano (BIE)

ALMACRAWLER 

TAB.

S.Groupe

REV.

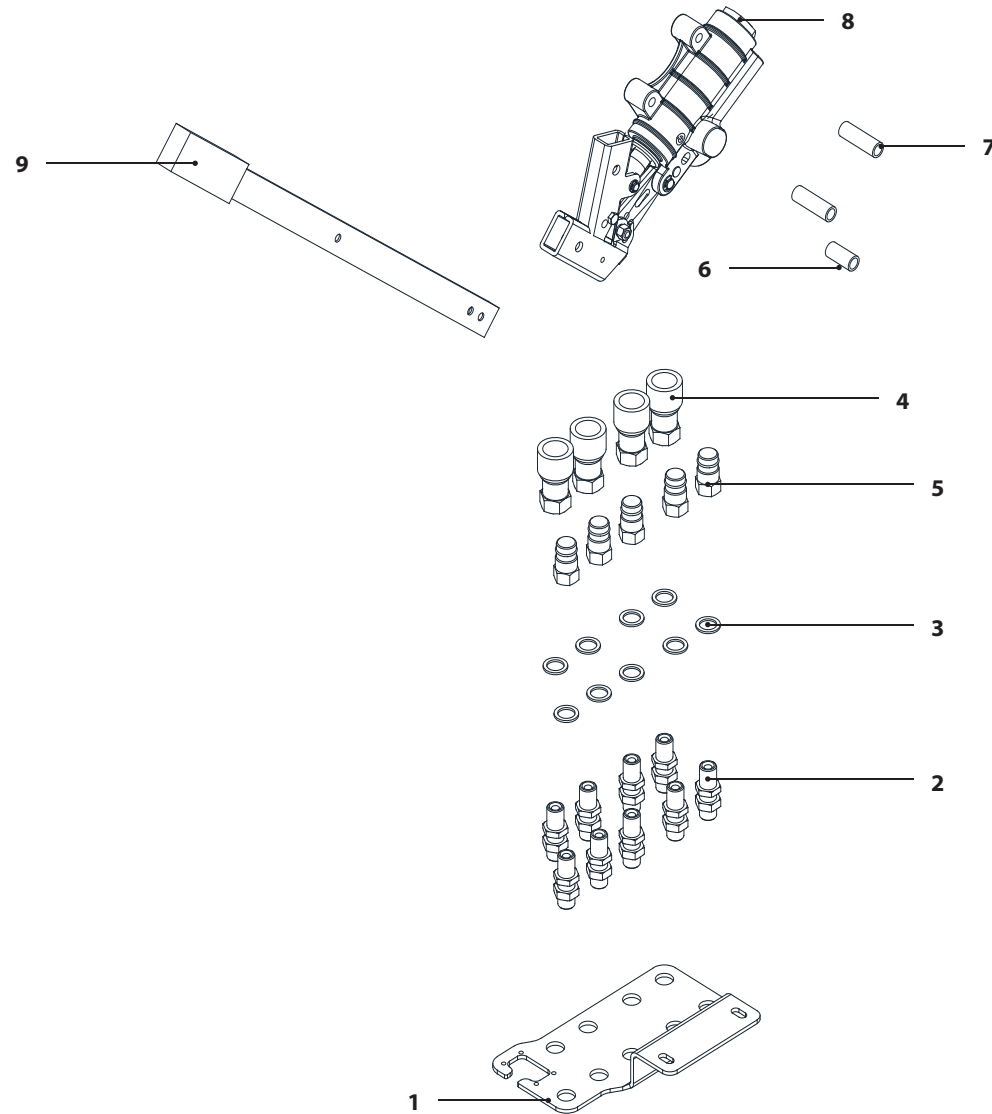
Pag.

3

-

0

9/12

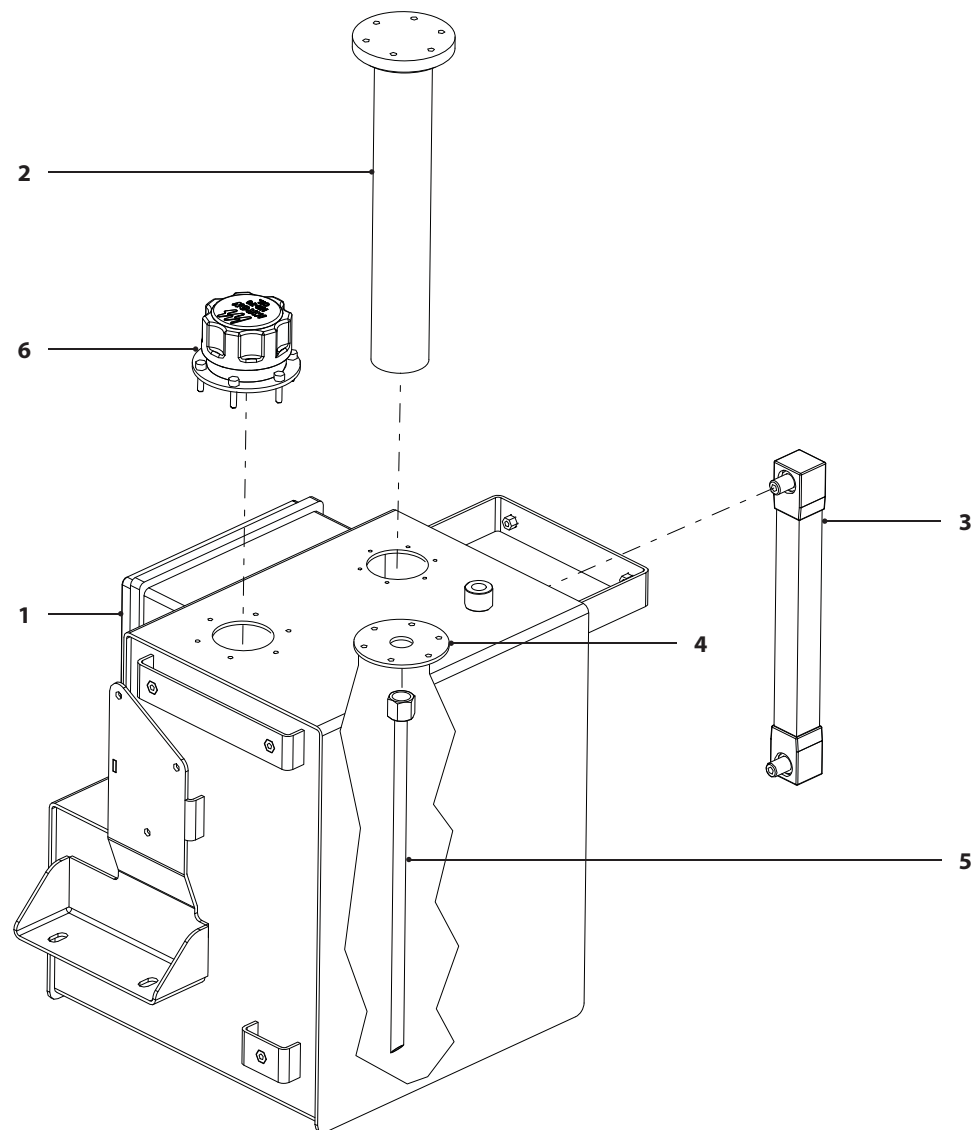


008356-1010-00

Assieme serbatoio

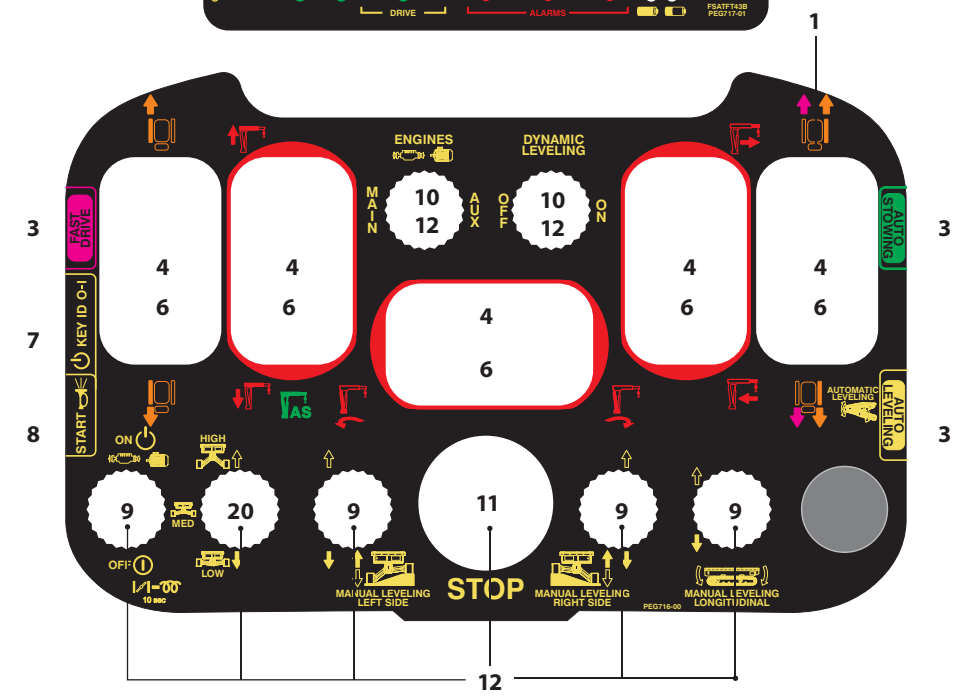
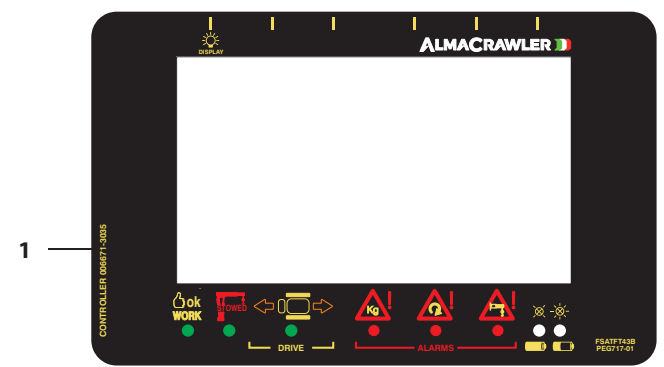
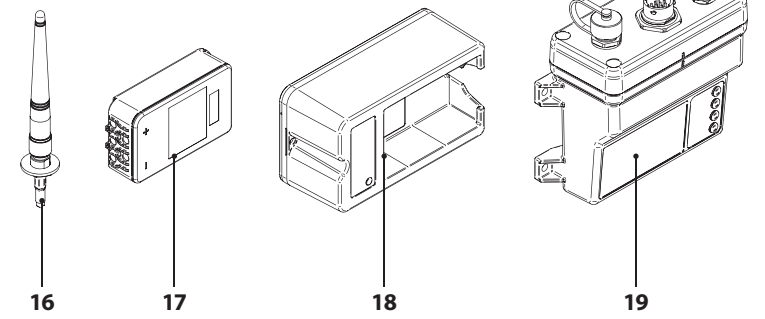
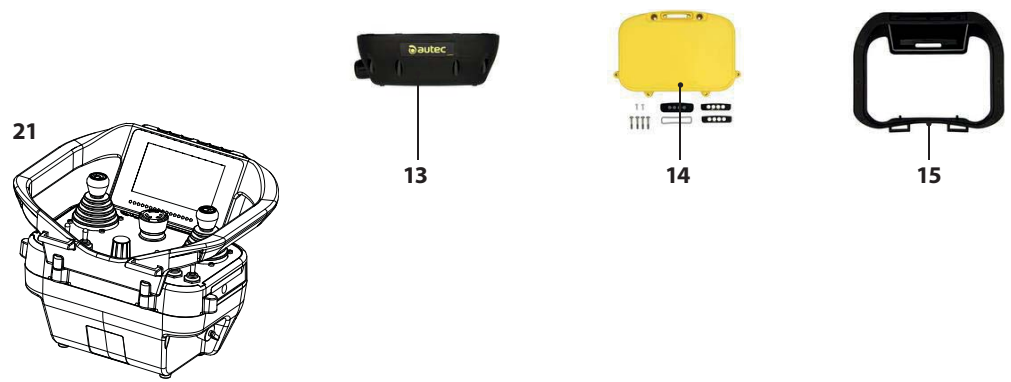
ALMACRAWLER 

TAB.	S.Groupe	REV.	Pag.
3	006819	0	11/12

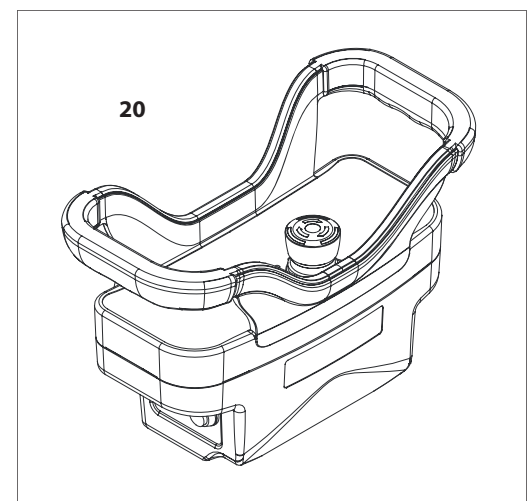
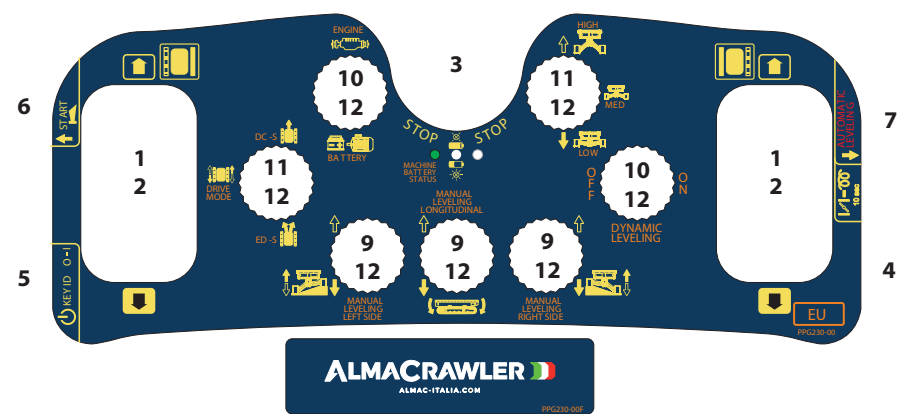
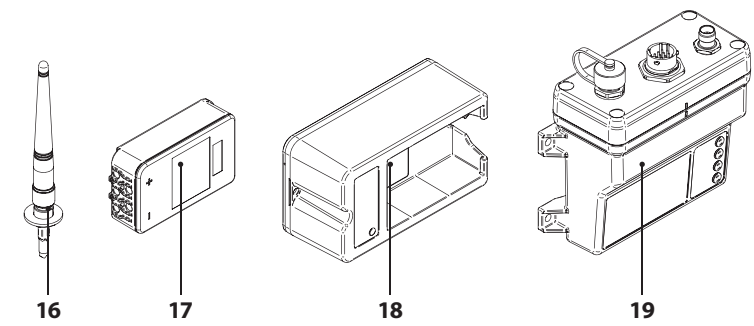
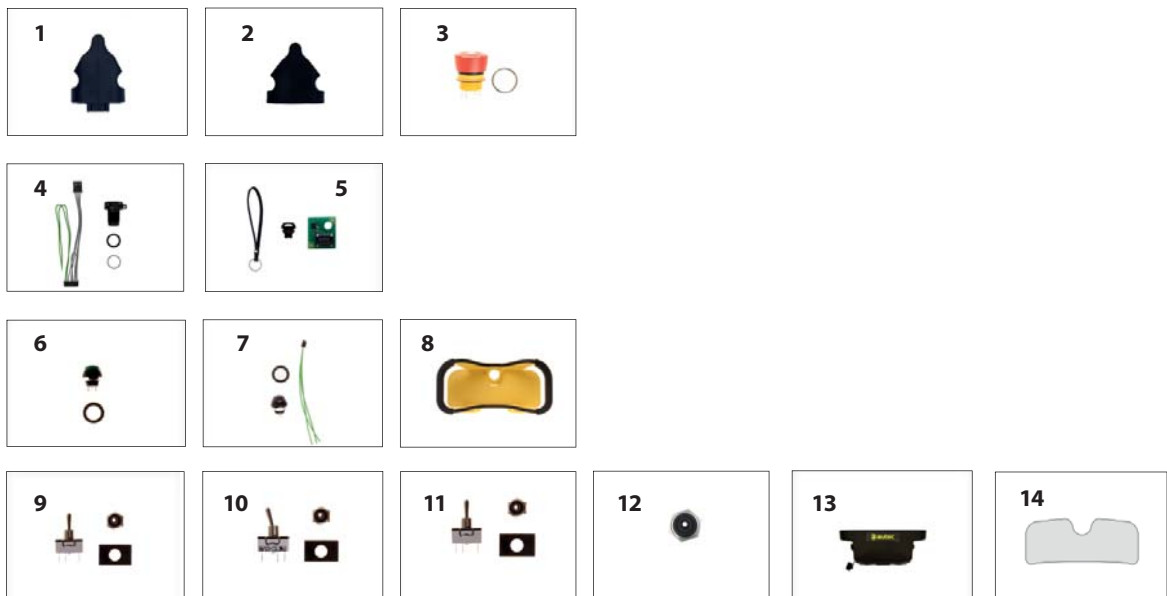



006672-1010-00			
TAB.	S.Groupe	REV.	Pag.
4	-	0	1/4

Kit radiocomando (T-CRANE)



TAB.	S.Groupe	REV.	Pag.
4		0	3/4



007477-1010-00				Kit radiocomando	
TAB.	S.Groupe	REV.	Pag.		
4		0	4/4		

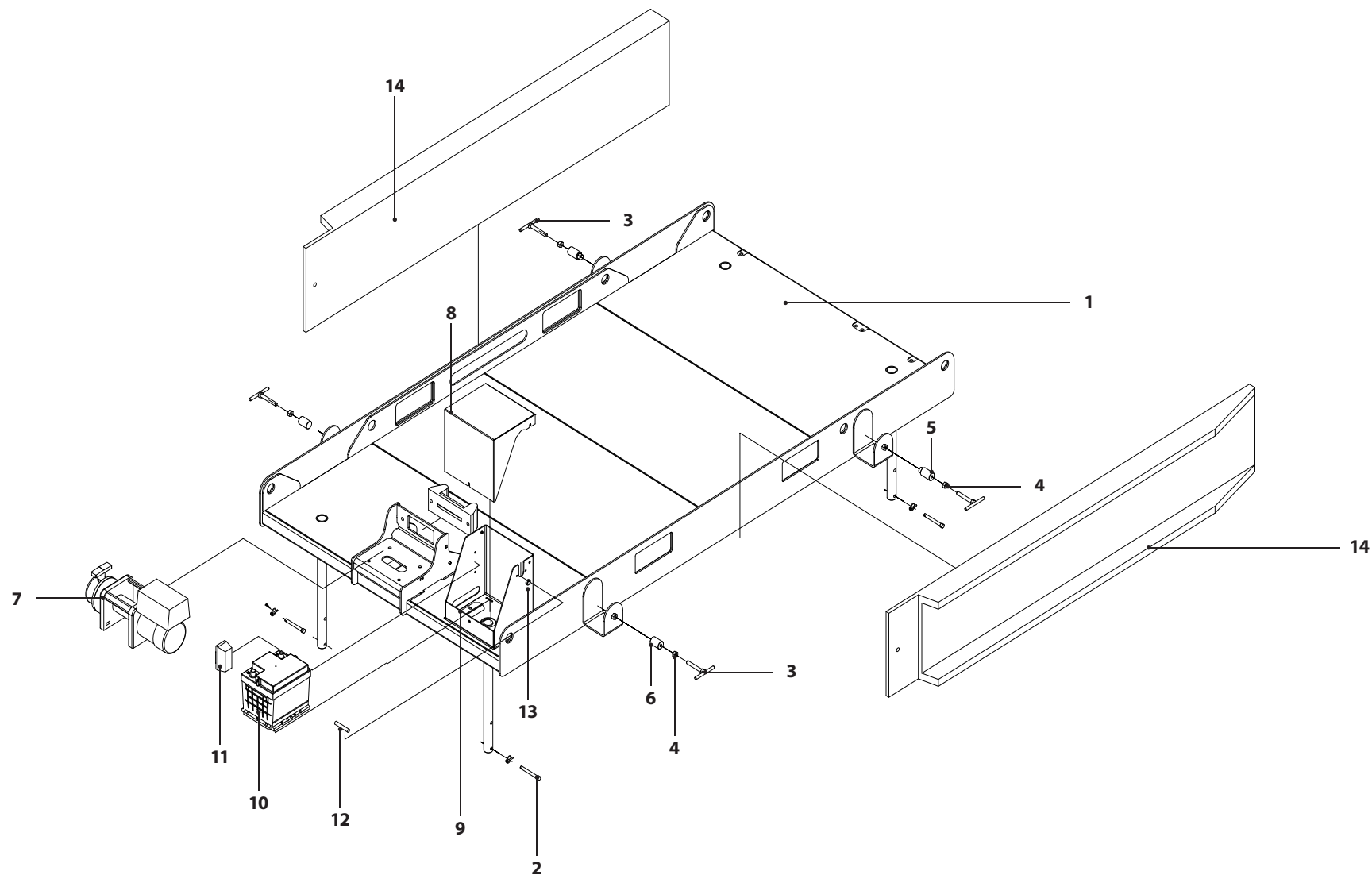
POS.	CODE	IT DESCRIZIONE	FR DESIGNATION	DE BENENNUNG	UK DESCRIPTION	ES DENOMINACIONES
1	005833-2035-P01	Joystick	Manche à balai	Joystick	Joystick	Palanca de mando
2	005833-3035-P02	Soffietto Joystick	Capot	Haube	Hood	Capucha
3	005047-3035-P02	Pulsante	Bouton	Taste	Button	Botón
4	005047-3035-P03	Connettore	Connecteur	Anschluss	Connector	Conector
5	005047-3035-P01	Chiave	Clé	Schlüssel	Key	Clave
6	005046-3035-P05	Pulsante	Bouton	Taste	Button	Botón
7	005046-3035-P06	Pulsante	Bouton	Taste	Button	Botón
8	005833-3035-P06	Guscio superiore	Boîte supérieure	Obere Box	Upper box	Caja superior
9	005046-3035-P07	Selettore	Sélecteur	Wähler	Selector	Selector
10	005046-3035-P08	Selettore	Sélecteur	Wähler	Selector	Selector
11	005833-3035-P03	Selettore	Sélecteur	Wähler	Selector	Selector
12	005046-3035-P10	Cappuccio selettore	Capot	Haube	Hood	Capucha
13	005833-3035-P04	Guscio inferiore	Boîte de fond	Untere Box	Bottom box	Caja inferior
14	006158-2035	Serigrafia EU	Décalcomanie EU	Abziehbild EU	Decal EU	Calcomanía EU
14	006156-2035	Serigrafia JP	Décalcomanie JP	Abziehbild JP	Decal JP	Calcomanía JP
14	006157-2035	Serigrafia USA-Canada-Australia	Décalcomanie USA-Canada-Australia	Abziehbild USA-Canada-Australia	Decal USA-Canada-Australia	Calcomanía USA-Canada-Australia
15	005731-1020	Cavo	Cable	Kabel	Cable	Cable
16	005833-3035-P09	Antenna	Antenne	Antenne	Antenna	Antena
17	005833-3035-P07	Batteria	Batterie	Batterie	Battery	Batería
18	005833-3035-P08	Caricabatteria	Chargeur	Ladegerät	Charger	Cargador
19	005833-3035-P10	Ricevente	Recevoir	Empfang	Receiving	Recepción
20	005833-3035-EU	Radiocomando vers.EU	Contrôle radio EU	Radio Kontrolle EU	Radio control EU	Radio control EU
20	005833-3035-JP	Radiocomando vers.JP	Contrôle radio JP	Radio Kontrolle JP	Radio control JP	Radio control JP
20	005833-3035-U.C.A	Radiocomando vers.USA-CANADA-AUSTRALIA	Contrôle radio USA-CANADA-AUSTRALIA	Radio Kontrolle USA-CANADA-AUSTRALIA	Radio control USA-CANADA-AUSTRALIA	Radio control USA-CANADA-AUSTRALIA

008338-1010-00

Maxi Chassis

ALMACRAWLER 

TAB.	S.Groupe	REV.	Pag.
5	-	0	1/10



004902-1010-00

Gancio di traino

ALMACRAWLER 

TAB.

S.Groupe

REV.

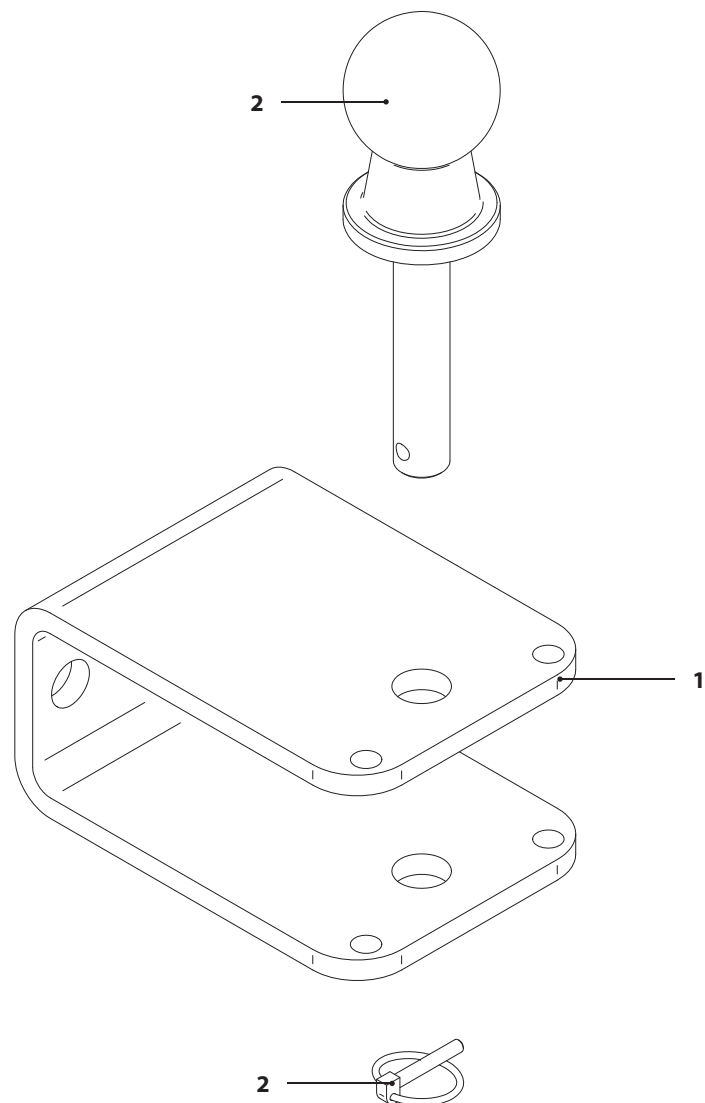
Pag.

5

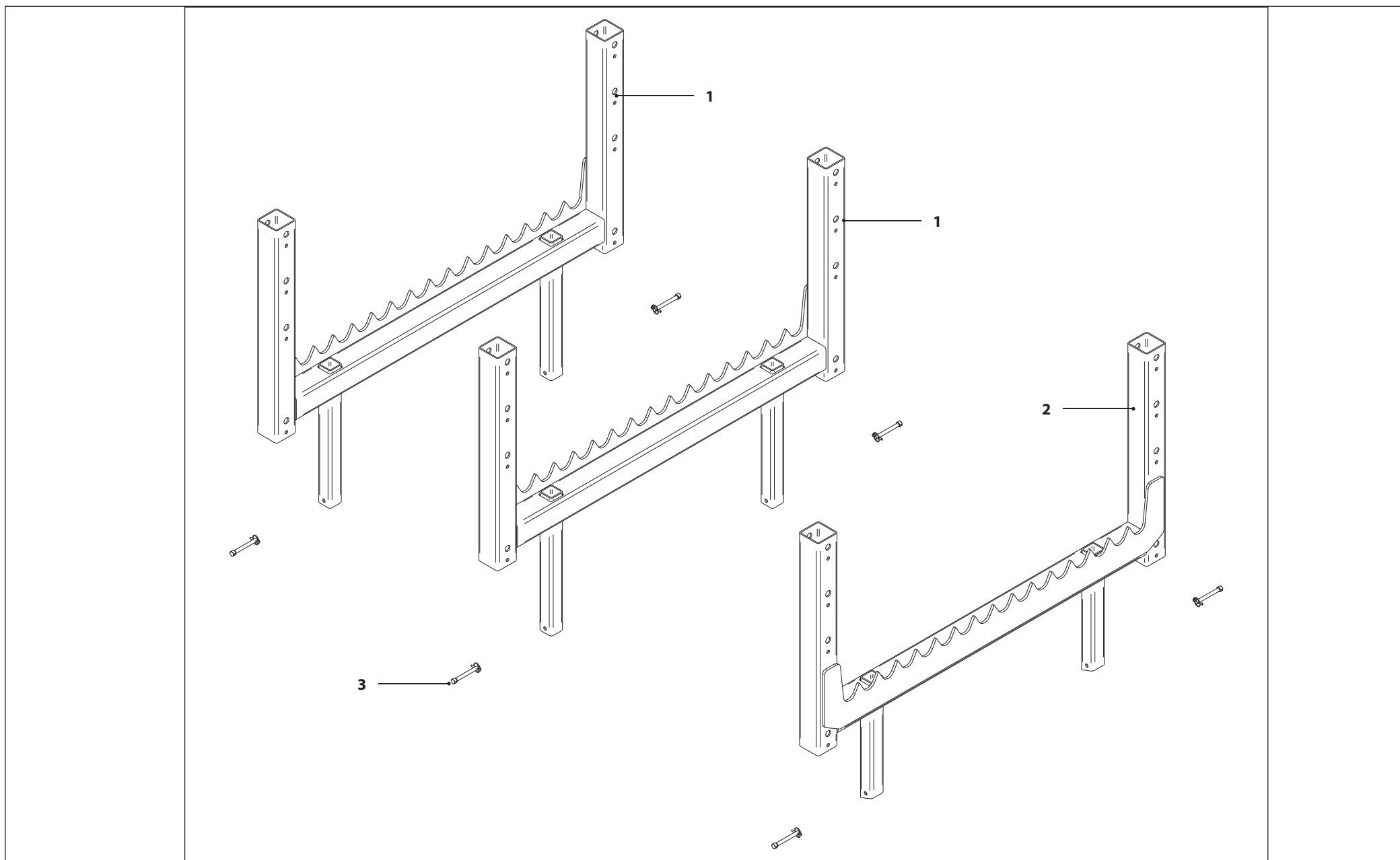
-

0

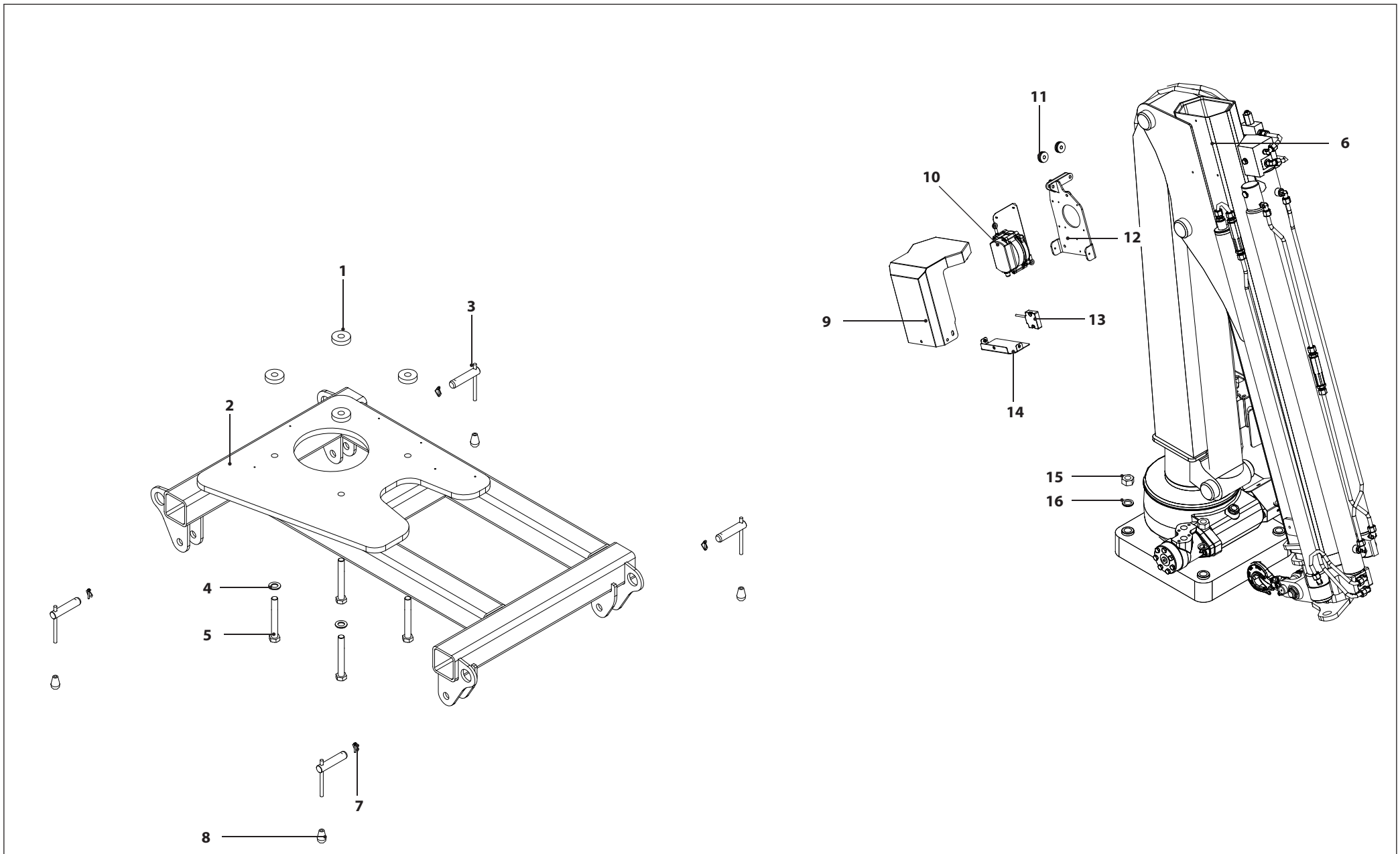
3/10




TAB.	S.Groupe	REV.	Pag.
5	-	0	5/10



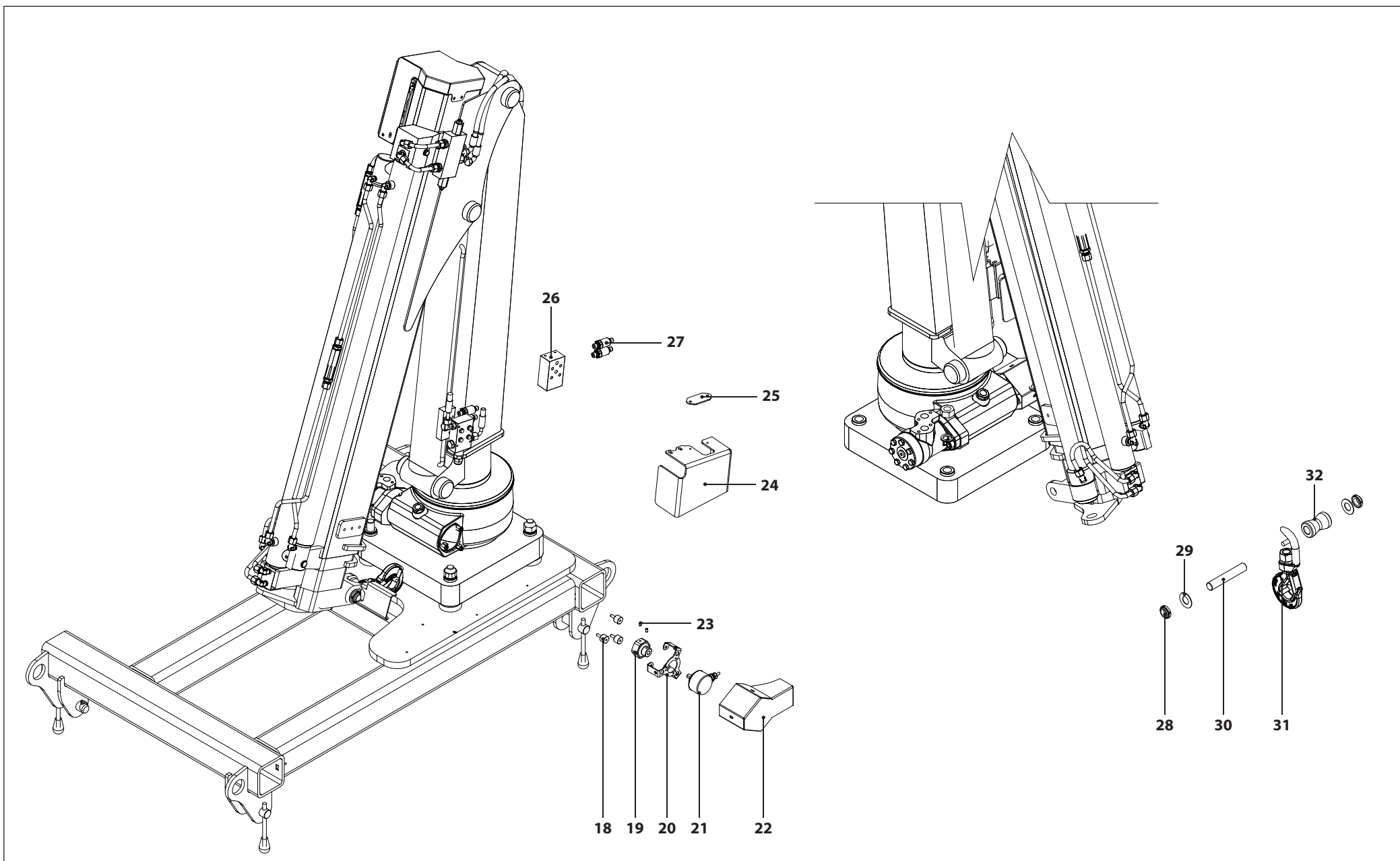
TAB.	S.Groupe	REV.	Pag.
5	-	0	7/10




006640-1010-01				T-CRANE 4.1	
TAB.	S.Groupe	REV.	Pag.		
5	-	0	8/10		

POS.	CODE	IT	DESCRIZIONE	FR	DESIGNATION	DE	BENENNUNG	UK	DESCRIPTION	ES	DENOMINACIONES
1	006791-2010		Distanziale		Entretoise		Abstandshalter		Spacer		Espaciador
2	006784-1015-VER9005		Supporto		Support		Träger		Support		Soporte
3	006796-1015		Perno		Axe		Bolzen		Pin		Perno
4	006792-3020		Rondella		Rondelle		Unterlegscheibe		Washer		Arandela
5	006793-3020-10.9		Vite		Vis		Schraube		Screw		Tornillo
6	006638-3040		Gru		Grue		Kran		Crane		Grua
7	006798-3020		Copiglia		Éclisse		Schiene		Splint		Entablillar
8	005480-3010		Pomello		Pommeau		Knopf		Knob		Pomo
9	007109-2010-VER9005		Coperchio		Couvercle		Deckel		Cover		Tapa
10	007017-3030		Sensore		Capteur		Sensor		Sensor		Sensor
11	007110-2010		Ruota		Roue		Rad		Wheel		Rueda
12	007108-1015-CAT		Supporto		Support		Träger		Support		Soporte
13	006722-3030		Sensore		Capteur		Sensor		Sensor		Sensor
14	007111-1015-VER9005		Coperchio		Couvercle		Deckel		Cover		Tapa
15	006795-3020		Dado		Écrou		Nuss		Nut		Nuez
16	006794-3020		Rondella		Rondelle		Unterlegscheibe		Washer		Arandela

TAB.	S.Groupe	REV.	Pag.
5	-	0	9/10



006640-1010-01				T-CRANE 4.1	
TAB.	S.Groupe	REV.	Pag.		
5	-	0	10/10		

POS.	CODE	IT	DESCRIZIONE	FR	DESIGNATION	DE	BENENNUNG	UK	DESCRIPTION	ES	DENOMINACIONES
18	006971-3020		Antivibrante		Isolateur de vibrations		Vibrations isolator		Vibration isolator		Aislador de vibraciones
19	006844-2010		Dado		Écrou		Nuss		Nut		Nuez
20	006841-1015		Supporto		Support		Träger		Support		Soporte
21	006721-3030		Sensore		Capteur		Sensor		Sensor		Sensor
22	006843-2010-VER9005		Coperchio		Couvercle		Deckel		Cover		Tapa
23	006840-3020		Vite		Vis		Schraube		Screw		Tornillo
24	007805-2010-VER9005		Coperchio		Couvercle		Deckel		Cover		Tapa
25	007806-2010-VER9005		Coperchio		Couvercle		Deckel		Cover		Tapa
26	007626-2010		Blocchetto idraulico		Bloc hydraulique		Hydraulikblock		Hydraulic block		Bloque hidraulico
27	002229-3030-T1		Sensore		Capteur		Sensor		Sensor		Sensor
28	005353-3025		Ghiera		Anneau		Ringmutter		Ring nut		Tuerca de anillo
29	005296-2010		Rondella		Rondelle		Unterlegscheibe		Washer		Arandela
30	006999-2010		Perno		Axe		Bolzen		Pin		Perno
31	006638-3040-P02		Gancio		Crochet		Haken		Hook		Gancho
32	006638-3040-P01		Rullo		Roller		Walze		Roller		Rodillo

ALMACRAWLER

ALMAC S.r.l.

Viale Ruggeri 6/A
42016 Guastalla (RE)

Tel. +39 0375 83 35 27
<http://www.almac-italia.com>
e-mail: info@almac-italia.com

Auckland Head Office

6-10 Parkway Drive,
Mairangi Bay, Auckland
Phone: (+64) 09 443 2436
Email: sales@yrco.co.nz

Auckland, Mt Wellington

20L Sylvia Park Road,
Mt Wellington, Auckland
Phone: (+64) 09 553 5470
Email: salesmtwell@yrco.co.nz
(Open January 2022)

Wellington

8 Broken Hill Road,
Porirua, Wellington
Phone: (+64) 04 212 2456
Email: saleswell@yrco.co.nz

Christchurch

20 Nga Mahi Road,
Sockburn, Christchurch
Phone: (+64) 03 341 6923
Email: saleschch@yrco.co.nz

YR Youngman
Richardson