

JIBBI

1670 EVO



PATENT PENDING



PRO ACTIVE LEVELLING

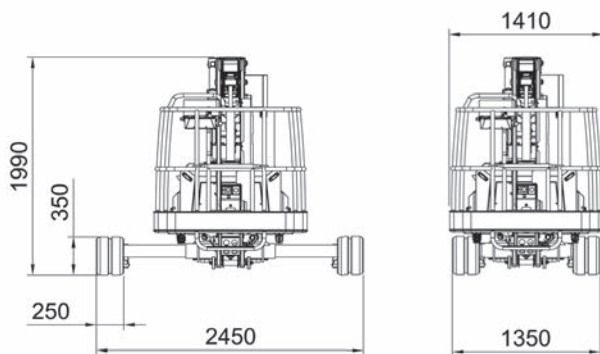
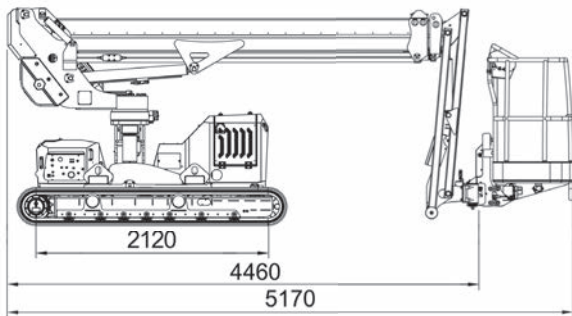
DYNAMIC LEVELLING

CRAWLER TELESCOPIC BOOM

ALMACRAWLER 
ALMAC-PACIFIC.COM.AU

JIBBI 1670 EVO

16 mt crawler telescopic boom.



Integrated Drive System

Using single joystick



Cable remote console by AUTECH

MyAlmac CONTROL PANEL



Machine settings remote control panel

Basket rotation

+/- 70°



Slewing ring rotation

+/- 110°



Resizable undercarriage

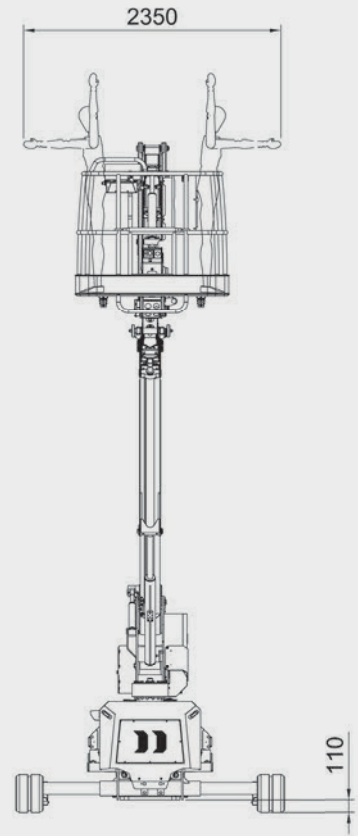
1.35 / 1.90 / 2.45 mt



Technical data

JIBBI 1670 EVO

| | |
|--|---------------|
| Max working height | 16,00 m |
| Max height basket floor | 14,00 m |
| Moving height | 9,80 m |
| Max outreach (load 80 kg) | 8,50 m |
| Max outreach (load 140 kg) | 7,70 m |
| Max outreach (load 230 kg) | 6,70 m |
| Rotation angle | +/- 110° |
| Basket size | 1,40 x 0,70 m |
| Basket rotation angle | +/- 70° |
| Max basket capacity | 230 kg |
| Length in stowed position (with detached basket) | 5,10 (4,40) m |
| Min width in stowed position | 1,35 m |
| Medium working width | 1,90 m |
| Max working width | 2,45 m |
| Min height in stowed position | 1,99 m |
| Longitudinal leveling | +/- 15° |
| Lateral leveling | +/- 15° |
| Max gradeability | 25° |
| Max side gradeability | 25° |
| Drive speed (fast) | 2,50 km/h |
| Speed over transport condition | 0,40 km/h |



Weights

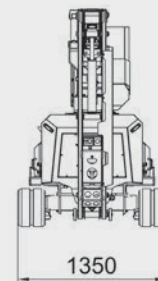
| | |
|----------------------------------|------------------------|
| Traffic load (max working width) | 3,10 KN/m ² |
| Total weight | 3850 kg |

Power

| | |
|-----------------------------------|--------------------------|
| 3TNM68 -AS Yanmar engine (diesel) | 14 kW - 19,2 Hp @3600rpm |
|-----------------------------------|--------------------------|

Extras - On Demand

| | |
|---|---------------|
| Wide Basket | 1,80 x 0,70 m |
| Non-marking tracks | - |
| Electric pump 220V-2,2KW / 50Hz (Weight +30 Kg) | - |
| Radio remote control with rechargeable battery | - |
| Arctic lubricant for cold climate | - |
| Winch kit 200 kg | - |
| Ultrasonic Anti-collision System | - |



Basket size

Standard
1.4 mt

Optional
1.8 mt



Winch
Optional



JIBBI 1670 EVO

16.0m

MAX W.H.

230kg

CAPACITY

19.2Hp

POWER

$\pm 15^\circ$

LONG. LEVEL.

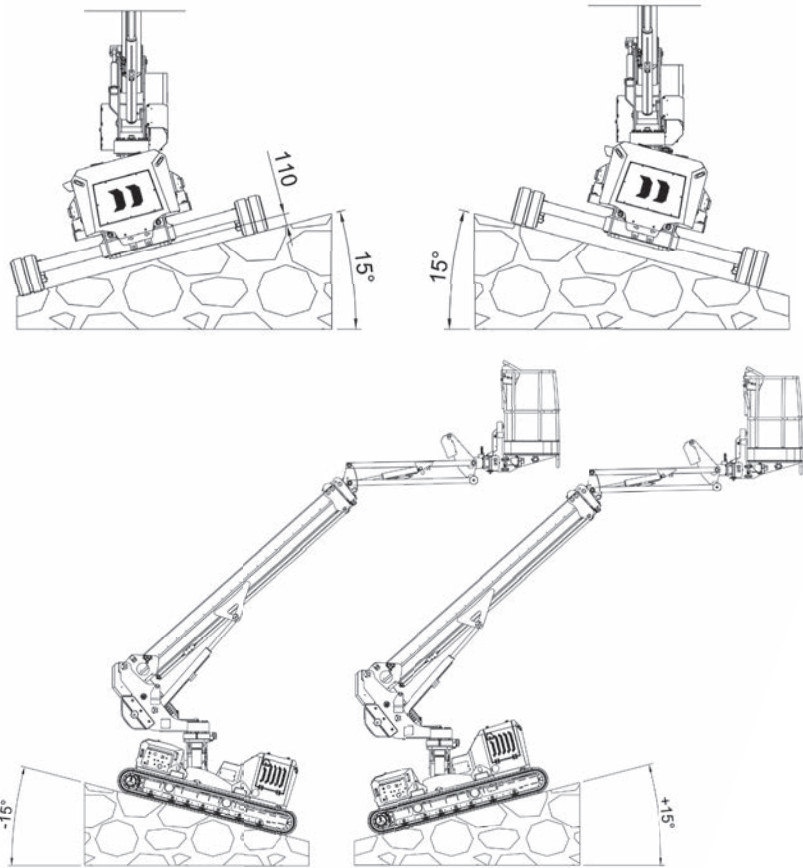
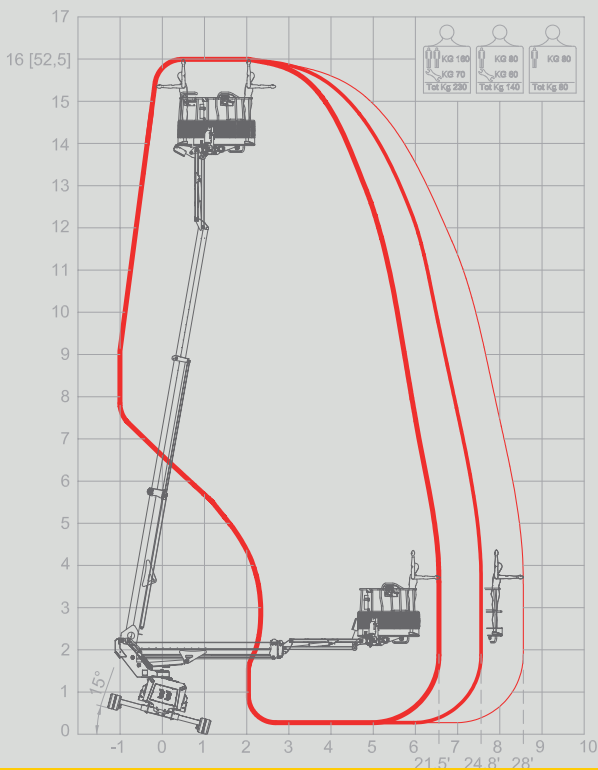
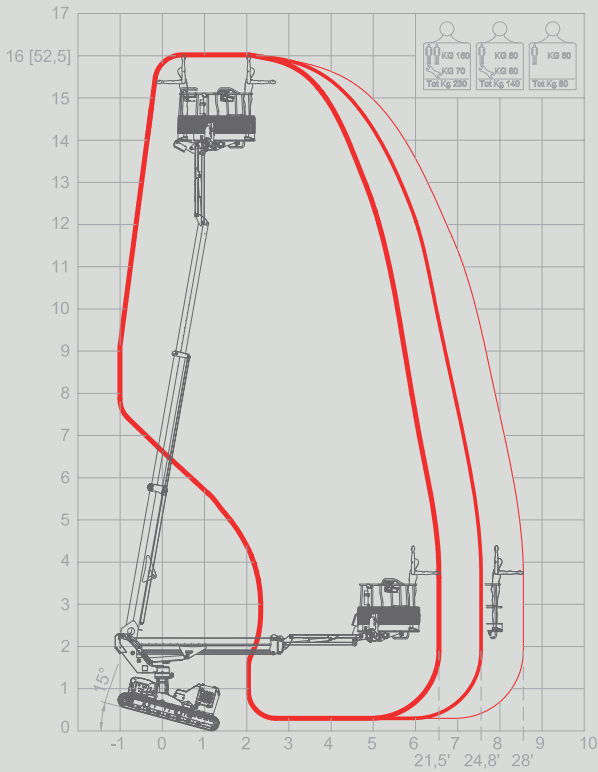
2.5km/h

SPEED

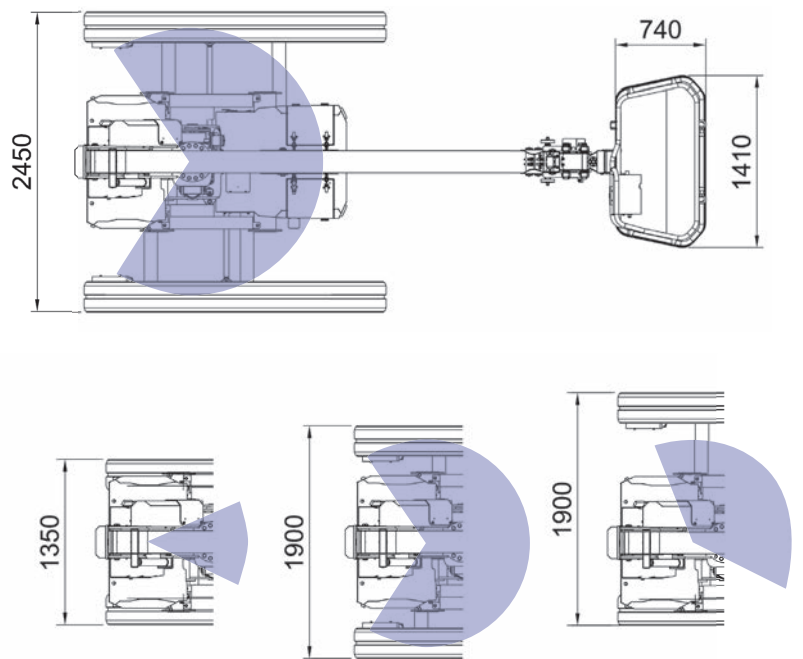
$\pm 15^\circ$

LATER. LEVEL.

- 80 kg
- 140 kg
- 230 kg



UNDERCARRIAGE CONFIGURATIONS & WORKING AREAS



Auckland Head Office
6-10 Parkway Drive,
Mairangi Bay, Auckland
Phone: (+64) 09 443 2436
Email: sales@yrco.co.nz

Auckland, Mt Wellington
20L Sylvia Park Road,
Mt Wellington, Auckland
Phone: (+64) 09 553 5470
Email: salesmtwell@yrco.co.nz

Wellington
8 Broken Hill Road,
Porirua, Wellington
Phone: (+64) 04 212 2456
Email: saleswell@yrco.co.nz

Christchurch
20 Nga Mahi Road,
Sockburn, Christchurch
Phone: (+64) 03 341 6923
Email: saleschch@yrco.co.nz

YR Youngman
Richardson

NOTED IN THIS CATALOGUE ARE NOT BINDING. ALMAC SRL RESERVES THE RIGHT TO CHANGE SPECIFICATIONS WITHOUT PRIOR NOTICE.