

YR Youngman
Richardson

ATHENA 1090 EVO

REACH NEW HEIGHTS IN FULL SAFETY
WITH PROACTIVE AND DYNAMIC LEVELLING



ALMACRAWLER 
ALMAC-PACIFIC.COM.AU



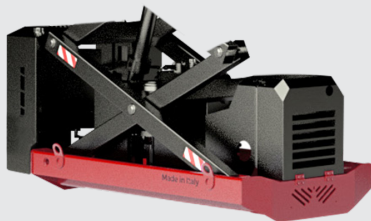
ATHENA



The ATHENA 1090 EVO bi-levelling scissor lift is able to operate on an incline of up to 20° and now can take you to a whopping 10 metre working height.

The automatic levelling system overcomes all the standard limitations of traditional 4x4 traction, providing the opportunity to work in hard to reach and confined spaces. The dynamic levelling of the machine enables the operator to work easily and in full safety even on steep slopes or uneven and rough terrain. The bi-energetic engine provides full versatility for both indoor or outdoor applications.

WHAT MAKES THE ATHENA 1090 EVO?



A FASTER, MORE POWERFUL ENGINE

The Kubota name is synonymous with the world's highest performing, efficient and reliable engines, providing awesome power when you need it most while reducing emissions and impact on the environment. The new whisper quiet Kubota Z602 diesel engine means happier operators - and neighbours.



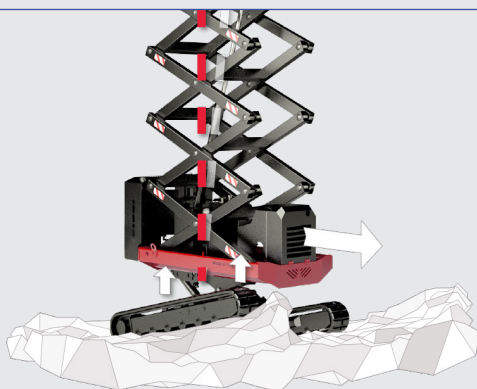
REACH NEW HEIGHTS WITH A TALLER DESIGN

With a generous 10 metres of working height the ATHENA 1090 is the tallest in her class, enabling extreme access with its extra reach and compact design so you can get up close and now go higher than ever before.



ATHENA 1090 EVO – New Features

✓ New maximum working height	→	10 metres
✓ More powerful and quieter Kubota engine	→	Kubota Z602 (12.5KW)
✓ Increased basket capacity and dimensions	→	300 kg (2 operators)
✓ Increased maximum speed	→	2.7 KM/H
✓ New proactive levelling	→	Instinctive self-aligning ability at height
✓ New dynamic levelling	→	Automatic self-levelling whilst driving stowed at speed



PROACTIVE AND DYNAMIC LEVELLING

This is the next evolution of the unique bi-levelling ability of the ATHENA range of scissor lifts. The first of its kind in the world to feature proactive and dynamic levelling, this means that the ATHENA now has the ability to instinctively and automatically level in either the stowed or raised position during translation.



LARGER WORKING PLATFORM

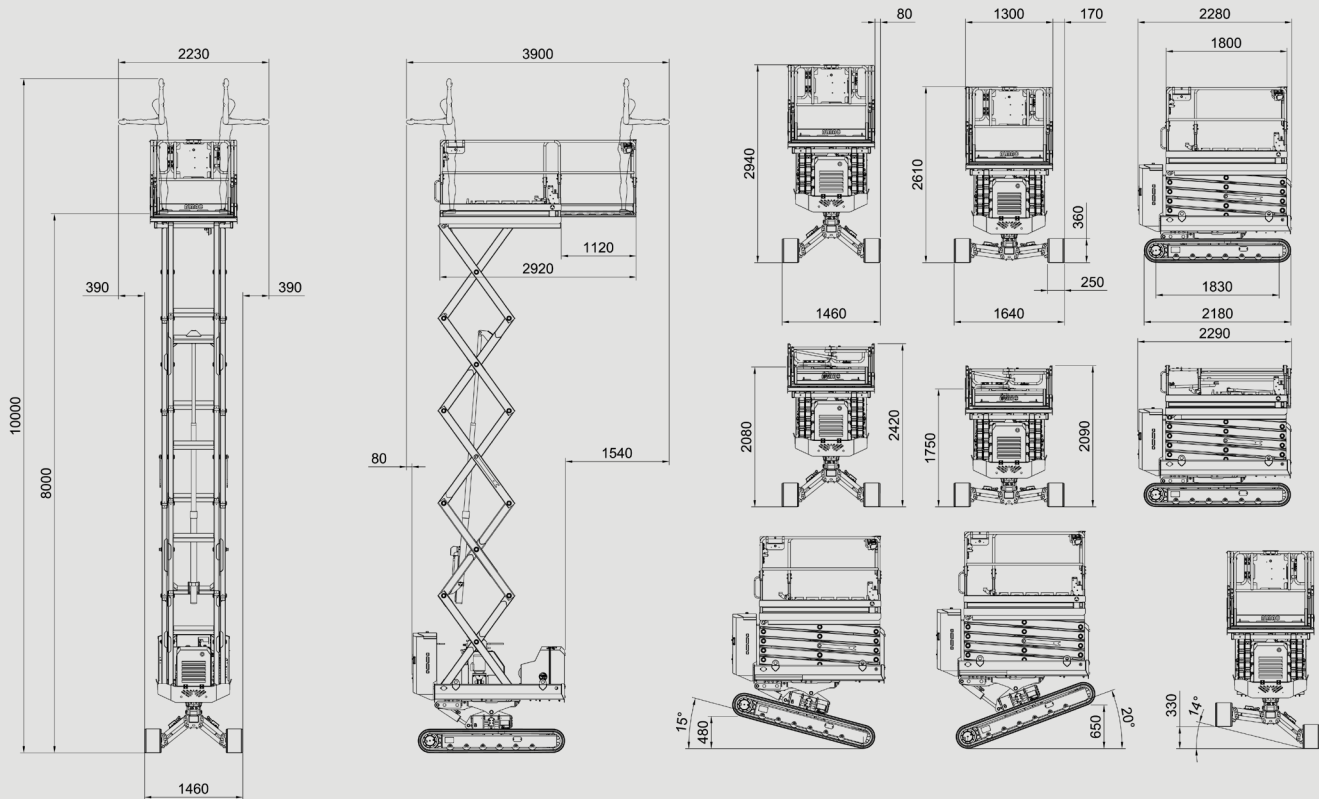
The considerable increase in platform size means that the ATHENA 1090 EVO now has a spacious 2-man basket, giving you the elbow room to get the job done faster and more comfortably. The basket can also be extended to give you generous horizontal reach and extra room for tools and materials.



ATHENA

ATHENA 1090 EVO

DIMENSIONS



ALL DATA REPORTED IN THIS CATALOGUE ARE NOT BINDING. ALMAC SRL RESERVES THE RIGHT TO CHANGE SPECIFICATIONS WITHOUT PRIOR NOTICE.

ATHENA 1090 EVO

SPECIFICATIONS

Basket capacity	300 kg (2 op.)
Max working height	10 m
Max height basket floor	8 m
Moving height	7 m
Powered	Kubota Z602 (12.5kW)
Accelerator	Auto
Undercarriage	Bi-levelling
Basket levelling	Auto
Longitudinal levelling front	+/- 15°
Longitudinal levelling rear	+/- 20°
Lateral levelling	+/- 14°
Power generator (option)	220V-1kW
Electric pump (option)	220V-2kW
Hydraulic commands	Proportionals

Dynamic levelling system	Yes
Pro Active levelling system	Yes
Direction control system	Yes
Easy-drive system	Yes
Kit for high speed	max 2.7 km/h
Ground emergency	Yes
Control of inclination	Auto
Gradeability	25°
Side slope	21°
Length	2.26 m
Width	1.46 ÷ 1.64 m
Min. machine height with folded railings	2.05 (1.89) m
Total weight	2,900 kg
Compliance	EN 280, ANSI, CSA, ASNZS1418

Auckland, Head Office
6-10 Parkway Drive,
Mairangi Bay,
Auckland
(+64) 09 443 2436
sales@yrco.co.nz

Auckland, Mt Wellington
20L Sylvia Park Road,
Mt Wellington,
Auckland
(+64) 09 553 5470
salesmtwell@yrco.co.nz

Waikato
3/31 Chafer Place,
Te Rapa,
Hamilton
(+64) 07 595 0245
saleswaikato@yrco.co.nz

Wellington
8 Broken Hill Road,
Porirua,
Wellington
(+64) 04 212 2456
saleswell@yrco.co.nz

Christchurch
20 Nga Mahi Road,
Sockburn,
Christchurch
(+64) 03 341 6923
saleschch@yrco.co.nz

40+
CELEBRATING
OVER 40 YEARS
IN BUSINESS

**YR Youngman
Richardson**