

**YR** Youngman  
Richardson

# ATHENA 850 EVO

SAFER, SMARTER, STRONGER



**ALMACRAWLER**

[ALMAC-PACIFIC.COM.AU](http://ALMAC-PACIFIC.COM.AU)



The ATHENA EVO 850 is a unique bi-levelling, compact scissor lift designed with a multitude of applications in mind.

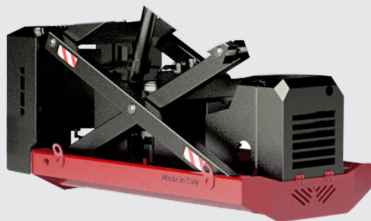
Construction sites, hire companies, agriculture and facilities maintenance providers now have access to one of the most versatile and safe access machines in the world.

A platform capacity of a 250 kg and working height of 8 metres means that two people can get up and get to it... rain, hail or shine.

The Athena is simple to control and extremely adaptable to difficult and undulating terrain indoors and out.

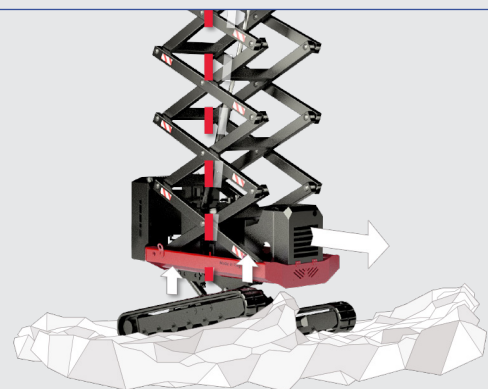
The structure of the Athena scissor lift has been designed to resist overload thanks to high resistance steel lifting mechanisms. They include a 220V-2.2Kw motor pump which makes it possible to operate the machine indoors or in areas where the use of petrol engines is not allowed. The 220V current generator enables the operator to use

## WHAT MAKES THE ATHENA 850 EVO?



### A FASTER, MORE POWERFUL ENGINE

The Kubota name is synonymous with the world's highest performing, efficient and reliable engines, providing awesome power when you need it most while reducing emissions and impact on the environment. The new whisper quiet Kubota Z482 diesel engine means happier operators - and neighbours.



### PROACTIVE AND DYNAMIC LEVELLING

This is the next evolution of the unique bi-levelling ability of the ATHENA range of scissor lifts. The first of its kind in the world to feature proactive and dynamic levelling, this means that the ATHENA now has the ability to instinctively and automatically level in either the stowed or raised position during translation.

## ATHENA 850 EVO – New Features

✓ New maximum working height	→	7.9 metres
✓ More powerful and quieter Kubota engine	→	Kubota Z482
✓ New proactive levelling	→	Instinctive self-aligning ability at height
✓ New dynamic levelling	→	Automatic self-levelling whilst driving stowed at speed

The ATHENA EVO 850 features intelligent monitoring systems and state of the art engineering, offering trades and industry a safer alternative for working on slopes and on slight inclines in tight access situations.

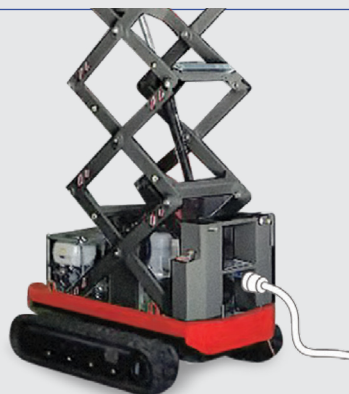
The ATHENA EVO 850 provides superior self-levelling while raised and boasts a diesel engine as well as the ability to perform the work of scaffolding, slab scissors and an all-terrain unit, with cost effectiveness and convenience, hence negating the need for multiple machines on site.

## COMMON FEATURES



### COMPACT & EASILY TOWABLE

A collapsible cage means the Athena packs down to a small size making overhead transitioning easy. With a maximum weight of 1990 kg, it is easily towed by most work vehicles.



### DUAL POWER SOURCE

Use tools wherever you need to with a 220V electric pump for indoors and an onboard power source in the basket for when power isn't available. Also available in a lithium ion variation.



### EXTENDABLE AND COLLAPSIBLE BASKET

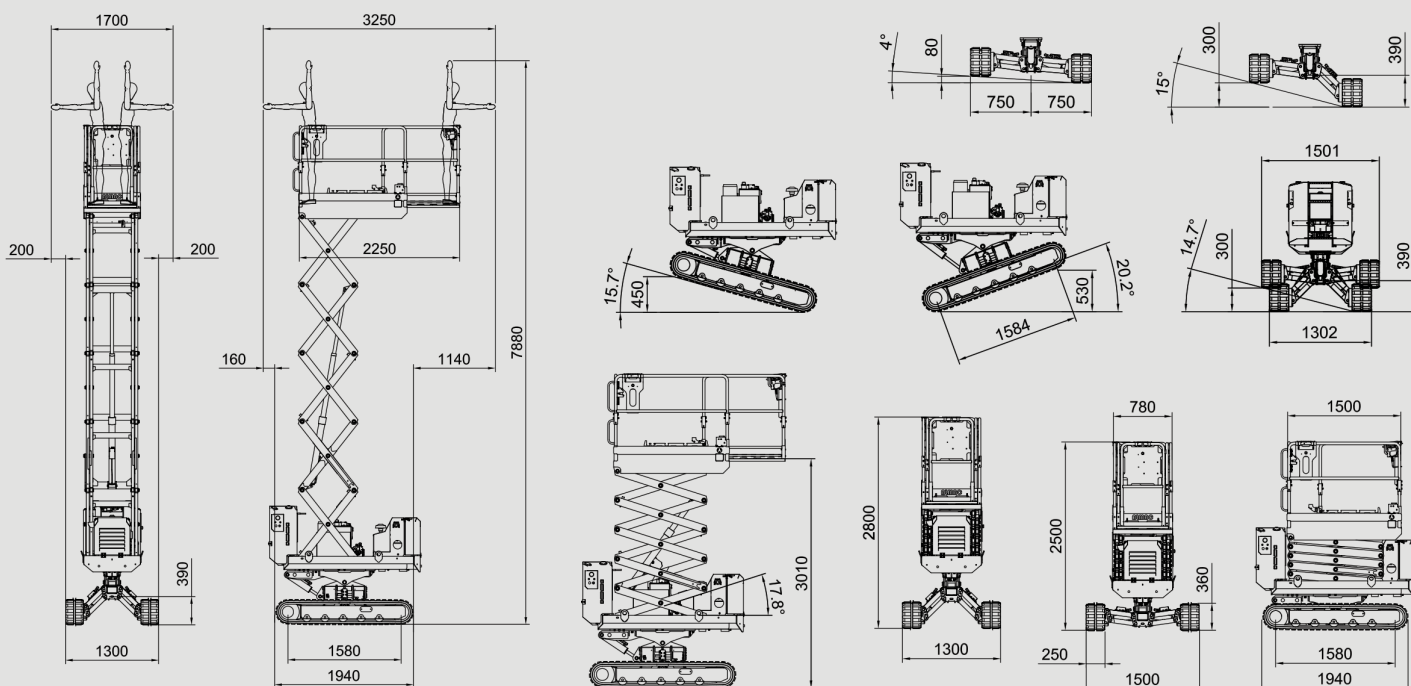
The extendable and collapsible basket is quick and easy to adjust for extreme access situations. Raise or lower the cage walls within five minutes to keep you on the move.



# ATHENA

## ATHENA 850 EVO

## DIMENSIONS



ALL DATA REPORTED IN THIS CATALOGUE ARE NOT BINDING. ALMAC SRL RESERVES THE RIGHT TO CHANGE SPECIFICATIONS WITHOUT PRIOR NOTICE.

## ATHENA 850 EVO

## SPECIFICATIONS

Basket capacity	250 kg (2 op.)	Hydraulic commands	Proportionals
Max working height	7.9 m	Direction-control system	Yes
Max height basket floor	5.9 m	Easy-drive system	Yes
Moving height	6.1 m	Kit for high speed	Max 2.20 km/h
Lateral levelling for moving at heights	+/- 4°	Ground emergency	Yes
Powered	Diesel KUBOTA Z482	Control of inclination	Automatic
Accelerator	Automatic	Gradeability	25°
Undercarriage	Bi-Levelling	Side slope	21°
Basket levelling	Automatic	Length	1.94 m
Longitudinal levelling front	+/- 16°	Width	1.30 ÷ 1.50 m
Longitudinal levelling rear	+/- 20°	Minimum machine height with folded railings	1.98 m
Lateral levelling	+/- 15°	Total weight	2200 kg
Power generator (option)	220V-1kW	Compliance	EN 280, ANSI, CSA, ASNZS1418
Electric motor	220V-2kW		

**Auckland, Head Office**  
6-10 Parkway Drive,  
Mairangi Bay,  
Auckland  
(+64) 09 443 2436  
sales@yrco.co.nz

**Auckland, Mt Wellington**  
20L Sylvia Park Road,  
Mt Wellington,  
Auckland  
(+64) 09 553 5470  
salesmtwell@yrco.co.nz

**Waikato**  
3/31 Chafer Place,  
Te Rapa,  
Hamilton  
(+64) 07 595 0245  
saleswaikato@yrco.co.nz

**Wellington**  
8 Broken Hill Road,  
Porirua,  
Wellington  
(+64) 04 212 2456  
saleswell@yrco.co.nz

**Christchurch**  
20 Nga Mahi Road,  
Sockburn,  
Christchurch  
(+64) 03 341 6923  
saleschch@yrco.co.nz



**YR Youngman Richardson**