

YR Youngman
Richardson



Athena 850 and Athena HE
Safer, Smarter, Stronger.



ALMACRAWLER 
ALMAC-PACIFIC.COM.AU



ATHENA™

The Athena 850 HE is a unique bi-levelling, compact scissor lift designed with a multitude of applications in mind. Construction sites, hire companies, agriculture and facilities maintenance providers now have access to one of the most versatile and safe access machines in the world.

A platform capacity of a 250 kg and working height of 8 metres means that two people can get up and get to it... rain, hail or shine. The Athena is simple to control and extremely adaptable to difficult and undulating terrain indoors and out. The structure of Athena scissor lifts has been designed to resist overload thanks to high resistance steel lifting mechanisms. They include a 220V-2.2Kw motor pump which makes it possible to operate the machine indoors or in areas where the use of petrol engines is not allowed. The 220V current generator enables the operator to use electric tools at heights so there is no need for local power sources and associated leads.



Named after the ancient Greek goddess of wisdom and strength, Athena was named for its clever bi-levelling capacity.



ATHENA HE

The ATHENA HE is so named due to its compact dimensions and reduced weight compared to the ATHENA 850. For those requiring confidence and stability on slopes and the ability to go through a single standard door, the ATHENA HE is the ideal machine on site.

- Automatic stabilisation outriggers
- Single door access
- Suitable for inclines up to 23 degrees
- Extremely light and compact
- Reduces unsafe work practices
- Track widening
- Suitable for indoors or outdoors



ATHENA 850

The ATHENA 850 is at the pinnacle of access technology. Intelligent monitoring systems coupled with state of the art engineering come together to offer trades and industry a safer alternative for work on slopes and on slight inclines in tight access situations. The ATHENA performs the work of scaffolding, slab scissors and an all-terrain unit in one cost effective and convenient machine, negating the need to have multiple machines on site.

- Self-levels on up to 20 degree inclines
- Double door access
- Independently levelling tracks
- Light enough to tow by most work utes
- Increases safety on slopes and inclines
- 8 metre working height

Common Features



Compact & easily towable

A collapsible cage means the Athena packs down to a small size making overhead transitioning easy. With a maximum weight of 1990 kg, it is easily towed by most work vehicles.



Dual power source

Use tools wherever you need to with a 220V electric pump for indoors and an onboard power source in the basket for when power isn't available. Also available in a lithium ion variation.



Extendable and collapsible basket

The extendable and collapsible basket is quick and easy to adjust for extreme access situations. Raise or lower the cage walls within five minutes to keep you on the move.

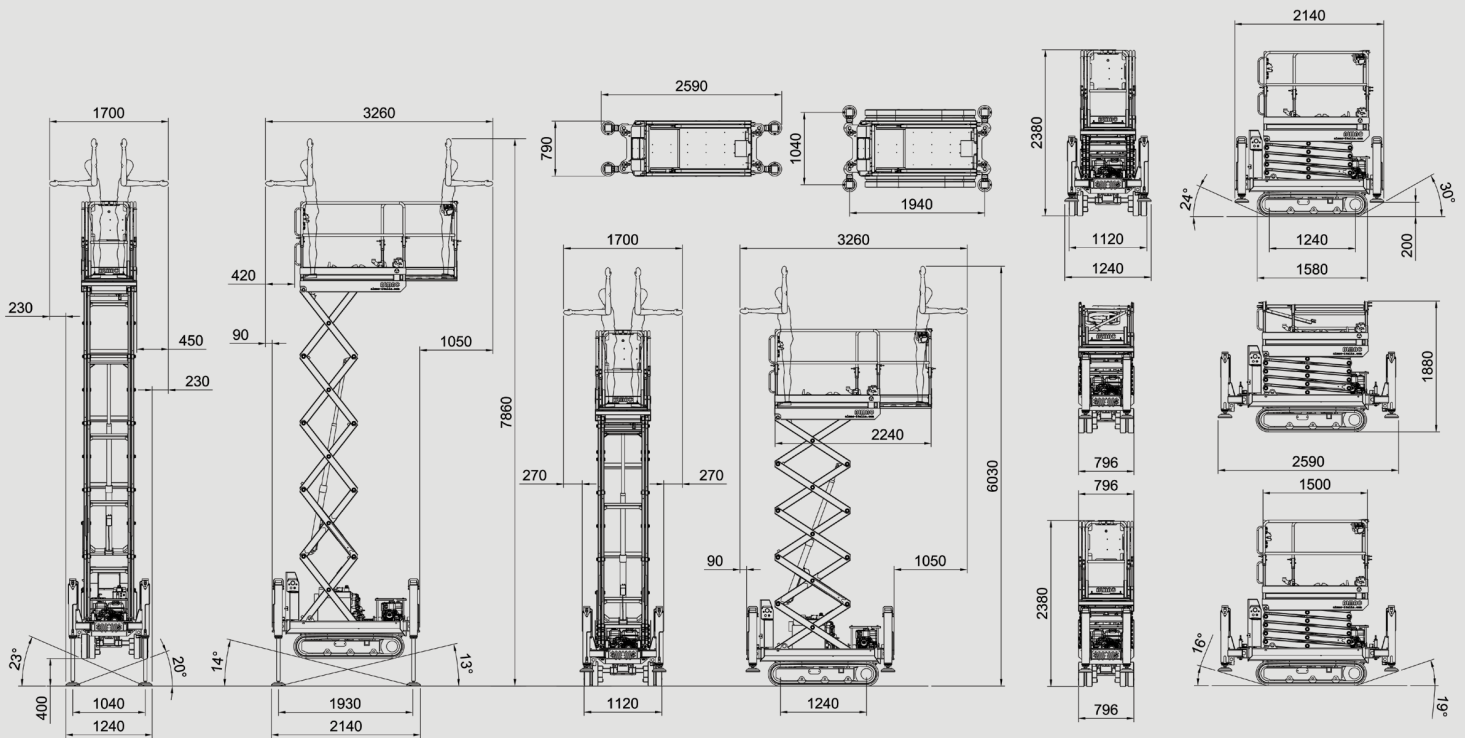
	Athena HE	Athena 850
Basket capacity	250 kg [2 op.]	250 kg [2 op.]
Max working height	7.8 m	7.9 m
Max height basket floor	5.8 m	5.9 m
Moving height	4.0 m	6.1 m
Lateral levelling for moving at heights	-	+ / - 4°
Powered [option]	-	Petrol Honda iGX390
Powered Standard	Petrol Honda iGX390	Diesel Hatz 1B40
Powered [option] Bi energy	-	Lithium ion with Hatz 1B40 Diesel
Accelerator	Automatic	Automatic
Undercarriage	Retractable	Bi-Levelling
Basket levelling	Automatic	Automatic
Longitudinal levelling front	+/- 13°	+/- 16°
Longitudinal levelling rear	Rear +/- 14°	+/- 20°
Lateral levelling	+/- 23°	+/- 15°
Power generator [option]	220V-1kW [iGX390, 1B40]	220V-1kW
Electric motor	220V-2kW	220V-2kW
Hydraulic commands	Proportionals	Proportionals
Direction-control system	Yes	Yes
Easy-drive system	No	Yes
Kit for high speed	Max 2.20 km/h	Max 2.20 km/h
Ground emergency	Yes	Yes
Control of inclination	Automatic	Automatic
Gradeability	25°	25°
Side slope	21°	21°
Length	2.14 m	1.94 m
Width	0.80 ÷ 1.24 m	1.30 ÷ 1.50 m
Minimum machine height with folded railings	1.88 m	1.98 m
Total weight	1781 kg	1990 kg
Compliance	EN 280, ANSI, CSA, ASNZS1418	EN 280, ANSI, CSA, ASNZS1418



ATHENA™

ATHENA HE

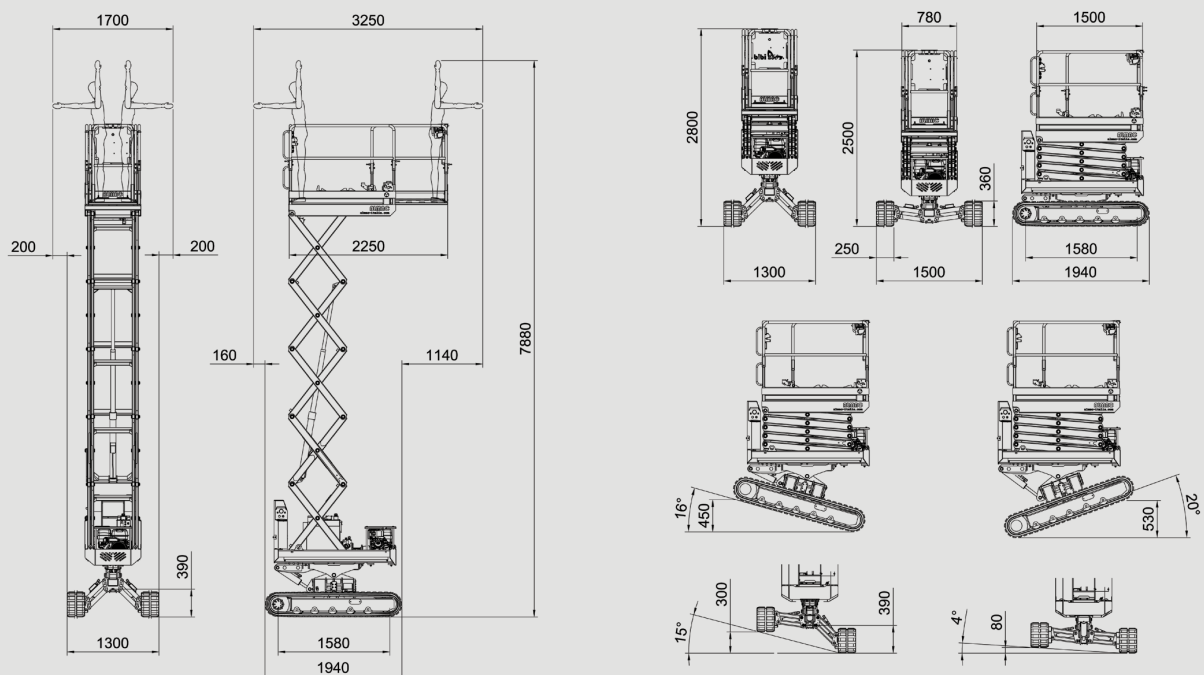
DIMENSIONS



ALL DATA REPORTED IN THIS CATALOGUE ARE NOT BINDING. ALMAC SRL RESERVES THE RIGHT TO CHANGE SPECIFICATIONS WITHOUT PRIOR NOTICE.

ATHENA 850

DIMENSIONS



ALL DATA REPORTED IN THIS CATALOGUE ARE NOT BINDING. ALMAC SRL RESERVES THE RIGHT TO CHANGE SPECIFICATIONS WITHOUT PRIOR NOTICE.

Auckland, Head Office
6-10 Parkway Drive,
Mairangi Bay,
Auckland
(+64) 09 443 2436
sales@yrco.co.nz

Auckland, Mt Wellington
20L Sylvia Park Road,
Mt Wellington,
Auckland
(+64) 09 553 5470
salesmtwell@yrco.co.nz

Waikato
3/31 Chafer Place,
Te Rapa,
Hamilton
(+64) 07 595 0245
saleswaikato@yrco.co.nz

Wellington
8 Broken Hill Road,
Porirua,
Wellington
(+64) 04 212 2456
saleswell@yrco.co.nz

Christchurch
20 Nga Mahi Road,
Sockburn,
Christchurch
(+64) 03 341 6923
saleschch@yrco.co.nz

4C+
CELEBRATING
OVER 40 YEARS
IN BUSINESS

**YR Youngman
Richardson**