

Specifications

Models	S-45 XC	
Measurements	Metric	US
Working height maximum*	15.56 m	50 ft 6 in
Platform height maximum	13.56 m	44 ft 6 in
Horizontal reach maximum	11.02 m	36 ft 2 in
Below ground reach	1.27 m	4 ft 2 in
A Platform length	0.91 m	3 ft
A Platform width	2.44 m	8 ft
A Height - stowed	2.51 m	8 ft 3 in
A Length - stowed	9.47 m	31 ft 1 in
A Width	2.49 m	8 ft 2 in
A Wheelbase	2.46 m	8 ft 1 in
A Ground clearance - center	0.32 m	12.5 in

Productivity

Maximum lift capacity - unrestricted	300 kg	660 lb
- restricted	454 kg	1,000 lb
Platform rotation	160°	
Vertical jib rotation	133°	
Turntable rotation	360° continuous	
Turntable tailswing	0.97 m	38 in
Drive speed - stowed	6.4 km/h	4.0 mph
- raised or extended	1.1 km/h	0.68 mph
Maximum slope rating**	45%	
Turning radius - inside	2.08 m	6 ft 10 in
- outside	4.78 m	17 ft 2 in
Controls	12 V DC proportional	
Tires - RT foam-filled	315/55D20-12 ply, 19.5 in wheel	
Tilt sensor activation	front to back: 7° and side to side: 5°	

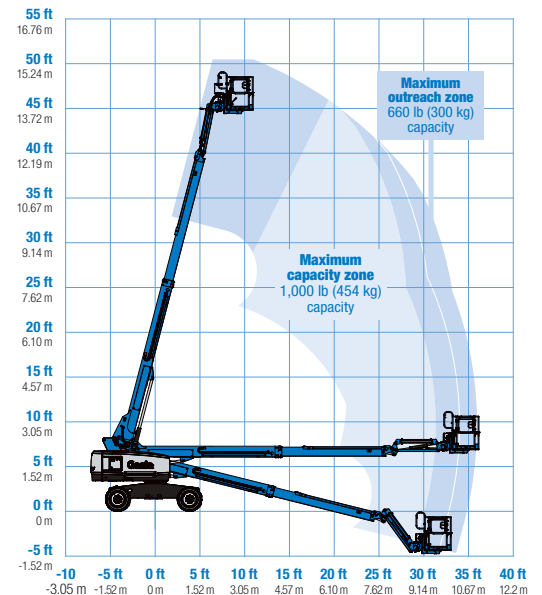
Power

Power source	Deutz D2011L03i, 36 kW (48 hp)	
Auxiliary power unit	12 V DC	
Hydraulic tank capacity	144 L	38 gal
Fuel tank capacity	132 L	35 gal

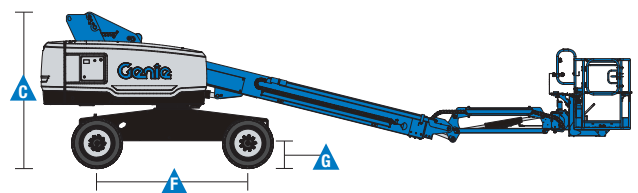
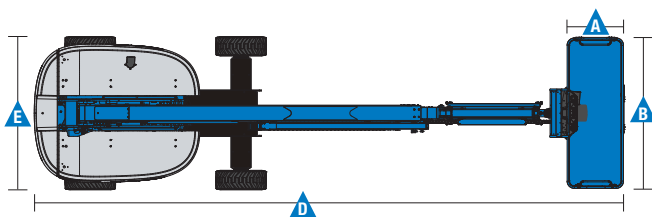
Weight*** 7,282 kg 16,054 lb

Standards Compliance AS 1418.10

Range Of Motion S-45 XC



* The metric equivalent of working height adds 2 m to platform height. U.S. adds 6 ft to platform height.
 ** Gradeability applies to driving on slopes. See operator's manual for details regarding slope ratings.
 *** Weight will vary depending on options and/or country standards.



Features

Standard Features

Measurements

S-45 XC

- 15.56 m (50 ft 6 in) working height
- 11.02 m (36 ft 2 in) horizontal reach
- 300 kg (660 lb) unrestricted and 454 kg (1,000 lb) restricted lift capacity

Productivity

- Self-leveling platform
- 160° hydraulic platform rotation
- Thumb rocker steering
- Proportional joystick controls
- Drive enable
- Alarm package: flashing beacon and travel alarm
- AC power cord to platform
- Horn
- Hour meter
- Tilt alarm
- Descent alarm
- 360° continuous turntable rotation
- Locking turntable covers
- Positive traction drive
- Two speed wheel motors
- Entry Toeboard
- Lift Guard[™] Contact Alarm
- Lift Tools[™] Work Tray
- Lift Connect[™] Telematics
- Lockable platform control box cover
- Hydraulic oil cooler

Power

- 12 V DC auxiliary power
- Anti-restart engine protection
- Auto engine fault shutdown
- Intake air heater (Deutz engine)

Platform

- Steel 2.44 m (8 ft) tri entry with side swing gate

Jib

- 5 ft (1.52 m) jib boom

Engine

- Deutz D2011L03i, 36 kW (48 hp)

Tire Options

- Rough terrain foam-filled
- Rough terrain non-marking foam-filled (standard)

Axles

- Active Oscillation, 4WD

Options & Accessories

Productivity Options

- Lift Power[™]
 - 7.5 kW 240 V 50 Hz Generator
- Lift Guard Platform Mesh - Half
- Air line to platform
- Specialty hydraulic oil (cold weather, fire resistant, or biodegradable)
- Panel cradle package
- Pipe cradle package
- Tow package
- Work light package
- Operator Protective Structure
- Fall Arrest Bar*

Power Options

- Diesel catalytic scrubber muffler
- Diesel catalytic purifier muffler

* Fall arrest bar not available with panel cradle and vice versa



Auckland Head Office
6-10 Parkway Drive,
Mairangi Bay, Auckland
Phone: (+64) 09 443 2436
Email: sales@yrco.co.nz

Auckland, Mt Wellington
20L Sylvia Park Road,
Mt Wellington, Auckland
Phone: (+64) 09 553 5470
Email: salesmtwell@yrco.co.nz

Wellington
8 Broken Hill Road,
Porirua, Wellington
Phone: (+64) 04 212 2456
Email: saleswell@yrco.co.nz

Christchurch
20 Nga Mahi Road,
Sockburn, Christchurch
Phone: (+64) 03 341 6923
Email: saleschch@yrco.co.nz

**YR Youngman
Richardson**