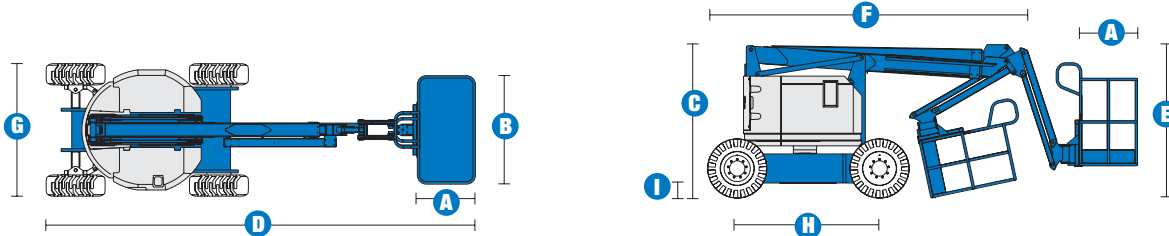


Specifications



MODEL	Z™-34/22 IC	
MEASUREMENTS	Metric	US
Working height maximum*	12.62 m	40 ft 10 in
Platform height maximum	10.62 m	34 ft 10 in
Horizontal reach maximum	6.78 m	22 ft 3 in
Up and over clearance maximum	4.57 m	15 ft
A Platform length	0.76 m	2 ft 6 in
B Platform width	1.42 m	4 ft 8 in
C Height - stowed	2.06 m	6 ft 9 in
D Length - stowed	5.66 m	18 ft 7 in
E Storage height	2.29 m	7 ft 6 in
F Storage length	4.11 m	13 ft 6 in
G Width	1.85 m	6 ft 1 in
H Wheelbase	1.88 m	6 ft 2 in
I Ground clearance - centre	0.17 m	6.5 in

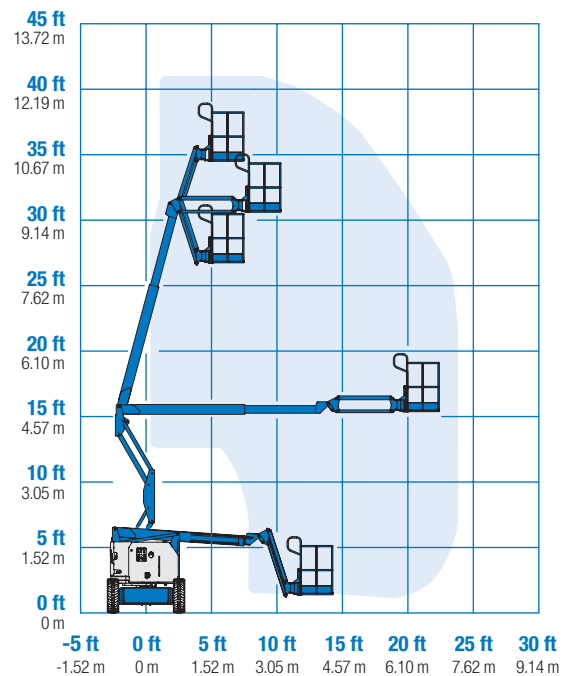
PRODUCTIVITY		
Lift capacity	227 kg	500 lbs
Platform rotation	180°	180°
Vertical jib rotation	139°	139°
Turntable rotation	355° non-continuous	
Turntable tailswing	zero	zero
Drive speed - stowed	4.8 km/h	3.0 mph
Drive speed - raised**	1.1 km/h	0.68 mph
Gradeability - stowed***	45%	45%
Turning radius - inside	1.80 m	5 ft 11 in
Turning radius - outside	4.11 m	13 ft 6 in
Controls	12V DC proportional	
Tyres - foam-filled	10 x 16.5 in NHS	

POWER		
Power source	Kubota D-1105 3-cylinder diesel 19.4 kW (26 hp)	
Auxiliary power unit	12V DC	12V DC
Hydraulic tank capacity	71.9 L	19 gal
Fuel tank capacity	34.1 L	9.0 gal

WEIGHT****		
	4,854 kg	10,701 lbs

STANDARDS COMPLIANCE	ANSI A92.5, CSA B354.4, CE Compliance, AS 1418.10
----------------------	---

RANGE OF MOTION Z™-34/22 IC



* The metric equivalent of working height adds 2 m to platform height. U.S. adds 6 ft to platform height.
 ** In lift mode (platform raised), the machine is designed to operate on firm, level surfaces only.
 *** Gradeability applies to driving on slopes. See operator's manual for details regarding slope ratings.
 **** Weight will vary depending on options and/or country standards.

Features

STANDARD FEATURES

MEASUREMENTS

Z™-34/22 IC

- 12.62 m (40 ft 10 in) working height
- 6.78 m (22 ft 3 in) horizontal reach
- 4.57 m (15 ft) up and over clearance
- Up to 227 kg (500 lbs) lift capacity

PRODUCTIVITY

- 1.42 m (4 ft 8 in) steel platform
- 4WD
- Rough terrain foam-filled tyres
- 1.22 m (4 ft) jib with 139° working range
- Self-leveling platform
- Hydraulic platform rotation
- Fully proportional controls
- Drive enable
- Horn
- Hour meter
- Tilt alarm
- Descent alarm
- 355° non-continuous turntable rotation
- Locking turntable covers
- Zero tailswing and front arm swing
- Two speed wheel motors
- Engine gauge package
- Alarm package
- Dual flashing beacons

POWER

- 12V DC auxiliary power
- Kubota D-1105 3-cylinder diesel
18 kW (25 hp)

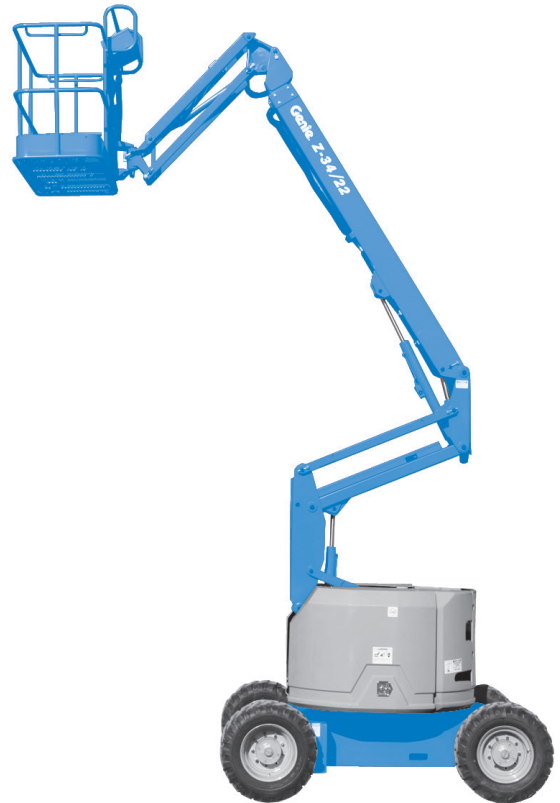
OPTIONS & ACCESSORIES

PRODUCTIVITY

- Platform swing gate
- Half-mesh platform inserts with swing gate
- Air line to platform
- Fire resistant hydraulic oil
- Biodegradable hydraulic oil
- Basic hostile environment kit
- Tool tray
- Fluorescent tube caddy
- Platform work lights
- Lockable platform control box cover
- Front driving lights
- Industrial non-marking foam-filled tyres

POWER OPTIONS

- 240V power to platform
- Cold Weather Package
- Retained key selector switch



Auckland Head Office
6-10 Parkway Drive,
Mairangi Bay, Auckland
Phone: (+64) 09 443 2436
Email: sales@yrco.co.nz

Auckland, Mt Wellington
20L Sylvia Park Road,
Mt Wellington, Auckland
Phone: (+64) 09 553 5470
Email: salesmtwell@yrco.co.nz

Wellington
8 Broken Hill Road,
Porirua, Wellington
Phone: (+64) 04 212 2456
Email: saleswell@yrco.co.nz

Christchurch
20 Nga Mahi Road,
Sockburn, Christchurch
Phone: (+64) 03 341 6923
Email: saleschch@yrco.co.nz

YR Youngman
Richardson