

### Specifications

MODEL	Z-62/40	
Measurements	Metric	US
Working height maximum*	20.87 m	67 ft 11 in
Platform height maximum	18.87 m	61 ft 11 in
Horizontal reach maximum	12.42 m	40 ft 9 in
Up and over clearance maximum	7.80 m	25 ft 7 in
▲ Platform length	0.91 m	3 ft
▲ Platform width	2.44 m	8 ft
▲ Height - stowed	2.56 m	8 ft 6 in
Height - transport (jib tucked under)	2.90 m	9 ft 6 in
▲ Length - stowed	9.25 m	30 ft 4 in
Length - transport (jib tucked under)	7.57 m	24 ft 10 in
▲ Width	2.49 m	8 ft 2 in
▲ Wheelbase	2.51 m	8 ft 3 in
▲ Ground clearance - center	0.38 m	1 ft 3 in

### Productivity

Lift capacity	227 kg	500 lbs
Platform rotation	160°	
Vertical jib rotation	135°	
Turntable rotation	360° continuous	
Turntable tailswing	zero	
Drive speed - stowed	5.1 km/h	3.2 mph
Drive speed - raised**	1.1 km/h	0.68 mph
Gradeability - stowed***	45%	
Turning radius - inside	2.79 m	9 ft 2 in
Turning radius - outside	5.72 m	18 ft 9 in
Controls	12 V DC proportional	
Tyres	355/55D625	

### Power

Power source	Deutz diesel D2011L03i 3 cylinder diesel 35.8 kW (48 hp)
Auxiliary power unit	12 V DC
Hydraulic tank capacity	132.5 L 35 gal
Fuel tank capacity	136.3 L 36 gal

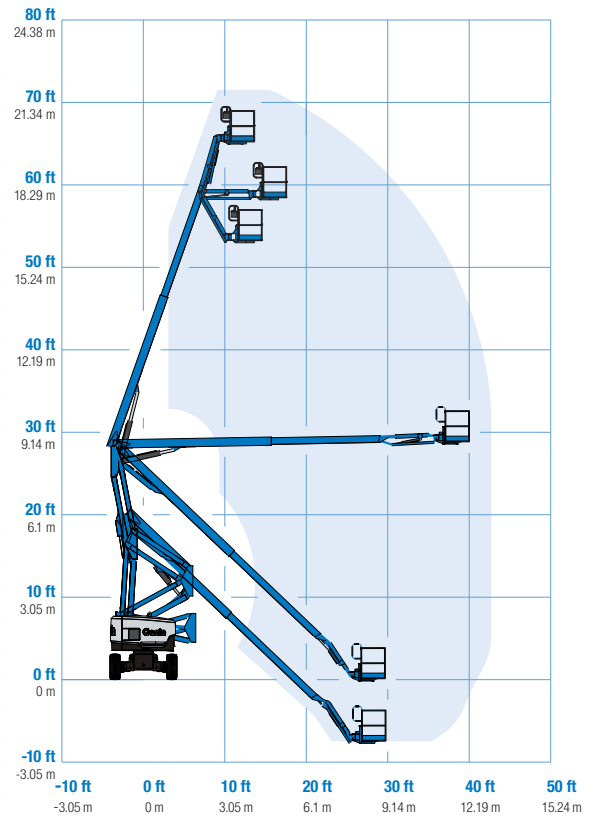
### Weight\*\*\*\*

	10,886 Kg	23,997 lbs
--	-----------	------------

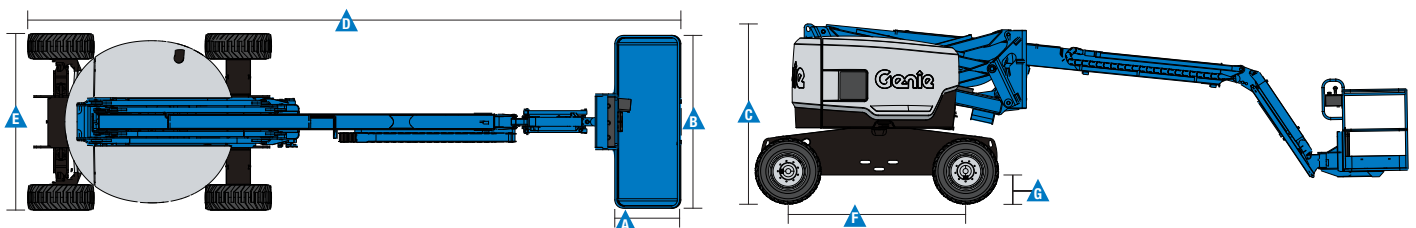
### Standards Compliance

AS 1418.10

Range Of Motion Z-62/40



\* The metric equivalent of working height adds 2 m to platform height. U.S. adds 6 ft to platform height.  
 \*\* In lift mode (platform raised), the machine is designed to operate on firm, level surfaces only.  
 \*\*\* Gradeability applies to driving on slopes. See operators manual for details regarding slope ratings.  
 \*\*\*\* Weight will vary depending on options and/or country standards.  
 \*\*\*\*\* Tier 4f engines available in US only.



## Features

### Standard Features

#### Measurements

- 20.87 m (67 ft 11 in) working height
- 12.42 m (40 ft 9 in) horizontal reach
- 7.80 m (25 ft 7 in) up and over clearance
- Up to 227 kg (500 lbs) lift capacity

#### Productivity

- Self-leveling platform
- Hydraulic platform rotation
- Proportional joystick controls
- Drive enable
- AC power cord to platform
- Horn
- Hour meter
- Tilt alarm
- Descent alarm
- Zero tailswing
- 360° continuous turntable rotation
- Locking turntable covers
- Positive traction drive
- 2 speed wheel motors
- Hydraulic oil cooler
- Dual flashing beacons
- Thumb rocker steer
- Lockable platform control box covers

#### Power

- 12V DC auxiliary power
- Engine protection package
- Anti-restart engine protection
- Auto engine fault shutdown
- Intake air heater

#### Jib

- 1.52 m (5 ft) jib boom

#### Engine

- Deutz diesel, 35.8 kW (48 hp)

#### Drive

- 4WD



### Standard Features

#### Axle

- Active oscillation

#### Tyres

- Rough terrain foam-filled tyres

### Options & Accessories

#### Productivity Options

- Platform swing gate
- Half mesh platform inserts with swing gate
- Air line to platform
- Biodegradable hydraulic oil
- Deluxe Hostile environment kit
- Work light package
- Operator Protective Structure
- Operator Protective Alarm
- Rough terrain non-marking foam-filled tyres

#### Power Options

- 7 kVA hydraulic generator (240 V 50 Hz)
- Cold Weather Packages
- Diesel catalytic purifier muffler
- 240 V power to platform

**Auckland Head Office**  
6-10 Parkway Drive,  
Mairangi Bay, Auckland  
Phone: (+64) 09 443 2436  
Email: sales@yrco.co.nz

**Auckland, Mt Wellington**  
20L Sylvia Park Road,  
Mt Wellington, Auckland  
Phone: (+64) 09 553 5470  
Email: salesmtwell@yrco.co.nz

**Wellington**  
8 Broken Hill Road,  
Porirua, Wellington  
Phone: (+64) 04 212 2456  
Email: saleswell@yrco.co.nz

**Christchurch**  
20 Nga Mahi Road,  
Sockburn, Christchurch  
Phone: (+64) 03 341 6923  
Email: saleschch@yrco.co.nz

**YR Youngman  
Richardson**