

### Specifications

Model	ZX-135/70	
<b>Measurements</b>	<b>Metric</b>	<b>US</b>
Working height maximum*	43.15 m	141 ft
Platform height maximum	41.15 m	135 ft
Horizontal reach max - riser extended	18.03 m	59 ft 2 in
Horizontal reach max - riser retracted	21.26 m	69 ft 9 in
Up and over clearance maximum -		
riser extended	23.01 m	75 ft 6 in
riser retracted	9.91 m	32 ft 6 in
Below ground reach	5.87 m	19 ft 3 in
<b>A</b> Platform length	0.91 m	3 ft
<b>B</b> Platform width	2.44 m	8 ft
<b>C</b> Height - stowed	3.07 m	10 ft 1 in
<b>D</b> Length - stowed	12.93 m	42 ft 5 in
<b>E</b> Width - axles extended	5.03 m	16 ft 6 in
Width - axles retracted	2.49 m	8 ft 2 in
<b>F</b> Wheelbase - axles extended	4.72 m	15 ft 6 in
Wheelbase - axles retracted	5.03 m	16 ft 6 in
<b>G</b> Ground clearance - center	0.38 m	1 ft 3 in

### Productivity

Lift capacity	272 kg	600 lbs
Platform rotation	160°	
Vertical jib rotation	110°	
Turntable rotation	360° continuous	
Turntable tailswing - axles extended riser up	0.79 m	2 ft 7 in
Turntable tailswing - riser down	4.27 m	14 ft
Drive speed - stowed	4.5 km/h	2.8 mph
Drive speed - raised	1.1 km/h	0.7 mph
Lift speed to full height	96 sec	
Gradeability - stowed**	45%	
Inside turning radius - axles extended	3.02 m	9 ft 11 in
Inside turning radius - axles retracted	6.27 m	20 ft 7 in
Outside turning radius - axles extended	7.34 m	24 ft 1 in
Outside turning radius - axles retracted	8.56 m	28 ft 1 in
<b>Controls</b>	12 V DC proportional	
<b>Tyres</b>	445D50/710 18 ply foam-filled	

### Power

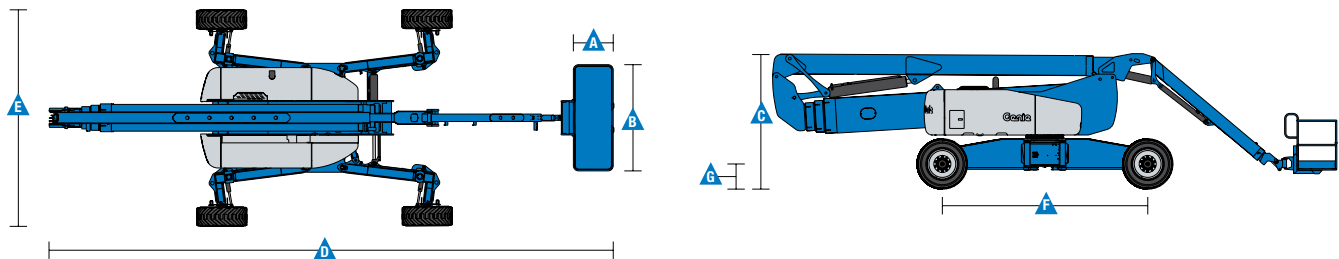
Power source	Deutz Diesel TD 2011 L04i 4-cylinder turbo diesel, 74 hp (55 kW)	
Auxiliary power unit	12 V DC	
Hydraulic tank capacity	246.1 L	65 gal
Fuel tank capacity	151.4 L	40 gal

### Weight\*\*\*

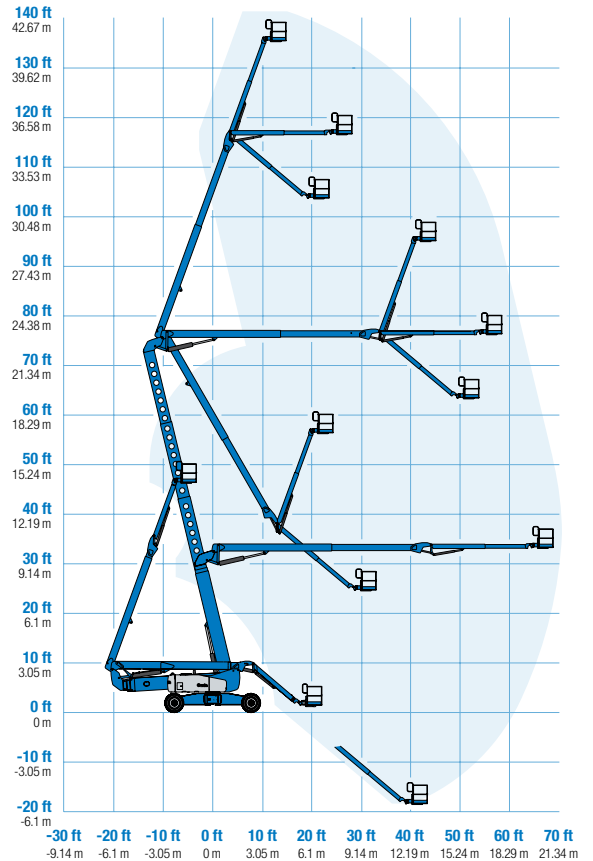
	20,267 kg	44,681 lbs
--	-----------	------------

### Standards Compliance

AS 1418.10



### Range Of Motion ZX-135/70



\* The metric equivalent of working height adds 2 m to platform height. U.S. adds 6 ft to platform height.

\*\* Gradeability applies to driving on slopes. See operator's manual for details regarding slope ratings.

\*\*\* Weight will vary depending on options and/or country standards.

### Features

#### Standard Features

##### Measurements

- 43.15 m (141 ft) working height
- 21.26 m (69 ft 9 in) horizontal reach
- 23.01 m (75 ft 6 in) up and over clearance
- Up to 272 kg (600 lbs) lift capacity

##### Productivity

- 2.44 m (8 ft) steel platform
- Xchassis™ extendable axles
- 3.66 to 6.10 m (12 to 20 ft) Jib-Extend™
- Self-leveling platform
- 4WD (standard)
- 4WS (standard)
- Extra-wide rough terrain foam-filled tyres
- Hydraulic platform rotation
- Fully proportional joystick controls
- On board full diagnostics and engine monitoring display
- ALC 1000 electronic control system
- Hydraulic oil cooler
- Drive enable
- Horn
- Hour meter
- Tilt alarm
- Descent, motion, & travel alarms
- 360° continuous turntable rotation
- Four wheel high angle steer
- Four steering modes: front, rear, crab and coordinated
- Four wheel brakes
- Full-time positive traction 4WD
- Adjustable foot switch timeout
- Two speed wheel motors
- Configurable controls to limit lift height to 27.74 m (91 ft)
- Engine status display
- Thumb rocker steer
- Dual flashing beacons
- Lockable platform control box covers
- Platform overload system

##### Power

- All engines are emissions compliant
- 12 V DC auxiliary power
- Engine protection package
- Deutz intake air heater
- Swing out engine tray
- Deutz turbo diesel, 74 hp (55 kW)

#### Options & Accessories

##### Productivity Options

- Half-mesh platform inserts with swing gate
- Air line to platform
- Biodegradable hydraulic oil
- Hostile environment kit
- Deluxe hostile environment kit
- Work light package

##### Power Options

- 7 kVA hydraulic generator (240 V / 50 Hz)
- Cold weather packages
- 240 V power to platform



**Auckland Head Office**  
6-10 Parkway Drive,  
Mairangi Bay, Auckland  
Phone: (+64) 09 443 2436  
Email: sales@yrco.co.nz

**Auckland, Mt Wellington**  
20L Sylvia Park Road,  
Mt Wellington, Auckland  
Phone: (+64) 09 553 5470  
Email: salesmtwell@yrco.co.nz

**Wellington**  
8 Broken Hill Road,  
Porirua, Wellington  
Phone: (+64) 04 212 2456  
Email: saleswell@yrco.co.nz

**Christchurch**  
20 Nga Mahi Road,  
Sockburn, Christchurch  
Phone: (+64) 03 341 6923  
Email: saleschch@yrco.co.nz

**YR Youngman  
Richardson**