



Husqvarna DM 200

Husqvarna DM 200 is a powerful and sturdy handheld electric core drill for both dry and wet drilling. Optimised for drilling 25 mm – 80 mm holes. The ergonomically designed D-handle gives you good control whilst drilling and its versatility makes it an ideal partner for professionals as well as semi-professionals. DM 200 is prepared for connectivity with Husqvarna Fleet Services™ system for monitoring of runtime, location, inventory etc. Suitable for light applications such as ventilation, plumbing pipes, electrical sockets and cables.



Two-speed gear selector

Enables easy adaptation of spindle speed and torque to any diameter between 25mm - 100mm.



Prepared for connectivity

Built-in connectivity enables communication with Husqvarna Fleet Services™ for monitoring of runtime, utilisation rate, inventory and more.

Durable and ergonomic design

Durable and shock-proof, designed to protect the electronics. Easy to carry and install thanks to low weight and ergonomic design.



360° adjustable front handle

For best ergonomic position



FEATURES

- Durable and shock-proof, designed to protect the electronics. Easy to carry and install thanks to low weight and ergonomic design.
- Prepared for connectivity
- Two-speed gear selector
- For best ergonomic position
- The machine uses pulsation to warn you of an approaching overload. If the load is not reduced the motor will shut off, to prevent overheating. Elgard™ increases productivity and extends product life.
- Easy to switch between dry and wet drilling
- Softstart™ lowers incoming current to reduce amperage when starting the motor.
- Drilling holes in steplless adjustable angles.
- Drilling horizontally.
- Drilling upwards and downwards.
- Drilling ventilation channels and holes for pipes and cables.

Technical Specifications

MOTOR	
Electronic product	Yes
Frequency	50–60 Hz
Voltage	220–240 V
Rated input power	2 kW
DRILLING EQUIPMENT	
Drill bit diameter handheld, max	100 mm
Recommended drill bit diameter, min	25 mm
SPECIFICATIONS	
Water pressure, max	3 bar
Mounting collar	60 mm
Spindle thread, inner	G 1/2"
Spindle thread, outer	1 1/4" - 7 UNC
TRANSMISSION	
Number of gearbox speeds	2
DIMENSIONS	
Water connector	Gardena Male
Weight	6.4 kg
Product size length	490 mm
Product size width	120 mm
SOUND AND NOISE	
Sound power level, guaranteed (LWA)	99 dB(A)
Sound pressure level at operators ear	88 dB(A)
PACKAGING	
Packaging length	550 mm
Packaging width	190 mm
Packaging height	400 mm

ACCESSORIES



HUSQVARNA WT2GO
598 74 24-01



HUSQVARNA WT15
599 58 23-02



WT15
966 70 83-01



SLURRY RINGS WSR
593 56 30-01



SLURRY RINGS WSR
593 56 30-02



SLURRY RINGS WSR
593 56 30-03



SLURRY RINGS WSR
593 56 30-04



SLURRY RINGS WSR
593 56 30-05



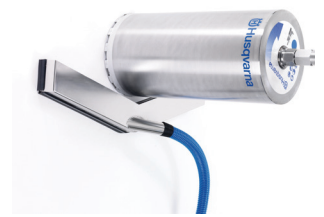
SLURRY RINGS WSR
593 56 30-06



SLURRY COLLECTOR
531 28 03-29



SLURRY COLLECTOR V-SHAPED
531 07 46-22



SLURRY COLLECTOR V-SHAPED
531 28 00-07



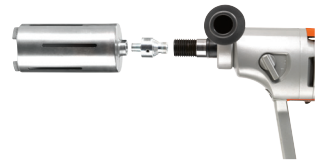
HUSQVARNA W 250 P
967 70 21-02



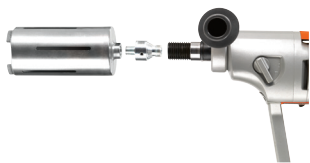
HUSQVARNA W 70 P
967 66 47-04



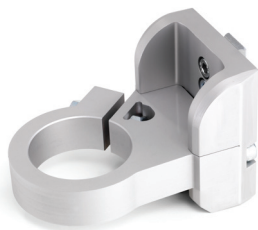
HUSQVARNA S 13
967 66 40-04



HUSQVARNA ADAPTER D 825
586 17 17-01



ADAPTER DRILL BIT FOR PIXIE
BITS
531 07 20-02



RING ADAPTER
581 25 71-01



DRILL MOTOR KEYS
531 14 09-51



TELESCOPIC START HELP DEVICE
522 92 95-01