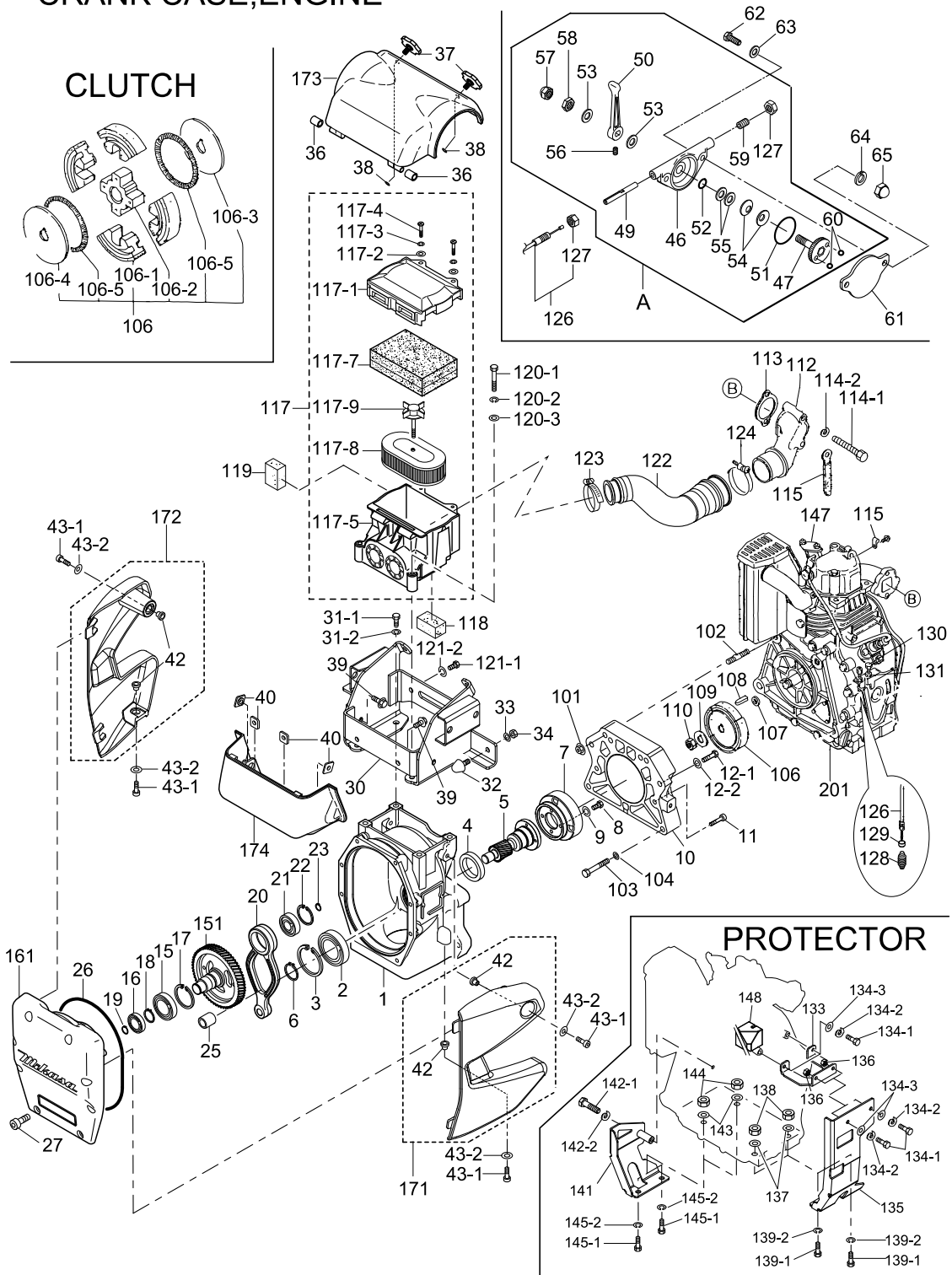


CRANK CASE, ENGINE

MTX-85DY
CRANK CASE,ENGINE

30X0



CRANK CASE, ENGINE

NO.	PART/NO.	Parts Name	Q' TY	MK	MK2	REMARKS
A	3629-10220	THRITTLE LEVER AY /MTX-85DY	1			
1	3661-18940	CRANK CASE / MTX-80	1			
2	0410-06007	BEARING 6007Z	1			
3	0801-00620	STOP RING R-62	1			
4	0604-04010	OIL SEAL TC-40528	1			
5	3703-55790	PINION /MTX-85DY	1			
6	0802-00350	STOP RING S-35	1			
7	3704-70830	CLUTCH DRUM /MTX-85DY	1			
8	0012-20615	BOLT 6X15 T	4			
9	0302-06150	SW M6	4			
10	3701-22490	ENGINE FRANGE /MTX-85DY	1			
11	0091-10052	SOCKET HEAD BOLT 8X45 ZN	2			
12-1	0012-21040	BOLT 10X40 T	2			
12-2	0302-10250	SW M10	2			
15	0400-06207	BEARING 6207	1			
16	0400-06305	BEARING 6305	1			
17	0801-00720	STOP RING R-72	1			
18	0802-00350	STOP RING S-35	1			
19	0802-00250	STOP RING S-25	1			
20	3703-55800	CONNECTING ROD /MTX-85DY	1			
21	0400-06304	BEARING 6304	1			
22	0801-00520	STOP RING R-52	1			
23	0802-00200	STOP RING S-20	1			
25	0479-40060	NEEDLE BEARING FJ-1816	1			
26	0507-10080	O-RING AS568-267	1			
27	0015-20825	SOCKET HEAD BOLT 8X25 T	8			
30	3702-19980	BRACKET, SHOCK ABSORBER	1			
31-1	0012-21030	BOLT 10X30 T	4			
31-2	0302-10250	SW M10	4			
32	9390-10270	STOPPER RUBBER (70) /MT	1			
33	0302-08200	SW M8	1			
34	0203-08060	NUT M8	1			
36	3664-60140	RUBBER BUSH (10X16X17)	2			
37	3663-45980	KNOB, CLEANER COVER / MTX	2			
38	0502-00060	O-RING P6	2			
39	0091-10040	FLANGE BOLT 8X20	4			
40	9594-07670	SQUARE NUT M8	4			
42	3664-61050	COLLAR / GUARD	4			
43-1	0015-20820	SOCKET HEAD BOLT 8X20 T	4			
43-2	0339-10220	WASHER (8. 4X15. 5X1. 6)	4			
46	3623-41550	THRITTLE BODY /MT-55	1			
47	3629-10230	THRITTLE, GEAR CP, W/BOLT	1			
49	3624-55620	SLIDER /MT-55	1			

CRANK CASE, ENGINE

NO.	PART/NO.	Parts Name	Q' TY	MK	MK2	REMARKS
50	3624-55630	THROTTLE LEVER /MT-55	1			
51	0501-00450	O-RING G-45	1			
52	0502-00100	O-RING P-10	1			
53	0311-10160	PW M10	2			
54	0321-10180	CONICAL SPRING WASHER M10	2			
55	9524-09100	WASHER 10. 5X22X0. 1	2			
56	0962-06006	SOCKET HEAD SCREW 6X6	1			
57	0221-31008	CAP NUT M10	1			
58	0204-10060	NUT M10, H=6	1			
59	0962-08020	SOCKET HEAD SCREW 8X20	1			
60	4644-57440	STEEL BALL D6 (SUJ)	2			
61	3714-67640	IDLE NOTCH PLATE	1			
62	0012-20625	BOLT 6X25 T	2			
63	0311-06100	PW M6	2			
64	0302-06150	SW M6	2			
65	0221-30605	CAP NUT M6	2			
101	0226-11010	FLANGE NUT M10 H	2			
102	26226-100452	STUD BOLT	2			
103	0012-21058	BOLT 10X90 T	2			
104	0302-10250	SW M10	2			
106	3714-63850	CLUTCH AY/CF050B/MT-D	1			
106-1	9430-20060	CLUTCH SHOE CP	4			
106-2	9430-50050	CLUTCH BOSS C812	1		!SD	
106-3	9430-60100	CLUTCH GAIDE/ (A) 1. 6T, 1C	1			
106-4	9430-60020	CLUTCH GUIDE/B	1			
106-5	9430-30021	CLUTCH SPRING	2			
107	3714-48260	SPACER 15X24X4 /MT76D, 86D	1			
108	22512-040120	KEY 4X 12	1			
109	3010-10210	LOCK WASHER, CLUTCH	1			
110	0229-10170	NUT M12 (P1. 25-B17)	1			
112	3713-35270	INTAKE FLANGE /MT-76D, 86D	1			
113	114284-12200	GASKET, AIR INTAKE	1			
114-1	0012-20652	BOLT 6X60 T	2			
114-2	0302-06150	SW M6	2			
115	160260-78700	CLAMP, WIRE	2			
117	3661-18640	AIR CLERNER AY / MTX	1			
117-1	3660-10010	AIR CLEANER COVER / MTX	1			
117-2	3660-10020	PW M6 (6. 5X18X1. 5)	2			
117-3	0302-06150	SW M6	2			

CRANK CASE, ENGINE

NO.	PART/NO.	Parts Name	Q' TY	MK	MK2	REMARKS
117 -4	3660-10330	COIN BOLT M6 W/SW, PW	2			
117 -5	3660-10050	BASE CP, AIR CLEANER/MTX	1			
117 -7	3660-10070	PRIMARY ELEMENT CP /MTX	1			
117 -8	3660-10080	SECONDARY ELEMENT/MTX	1			
117 -9	3620-30040	GRIP BOLT CP, AIR CLERNER	1			
118	3664-60160	SEALING FORM, UNDER / MTX	1			
119	3664-60150	SEALING FORM, SIDE / MTX	1			
120 -1	0012-20851	BOLT 8X55 T	2			
120 -2	0302-08200	SW M8	2			
120 -3	0311-08160	PW M8	2			
121 -1	0012-20815	BOLT 8X15 T	2			
121 -2	0302-08200	SW M8	2			
122	3703-55780	INTAKE PIPE /MTX-85DY	1			
123	9544-07682	CYCLONE CLAMP(CY-1) 38	1			
124	3710-00020	HOSE BAND (B) AH-1050	1			
126	9561-00057	THROTTLE WIRE V390-510	1			
127	0204-08050	NUT M8, H=5	2			
128	3714-67760	RETURN SPRING /MT-76D	1			
129	3714-67770	RUBBER CAP (THROTTLE LEVER	1			
130	114250-66440	BOLT, ADJUSTING	1			
131	26756-060002	LOCK NUT M 6 PLATED	1			
133	3704-70840	LINK PROTECTOR STAY /85DY	1			
134 -1	0012-20620	BOLT 6X20 T	4			
134 -2	0302-06150	SW M6	4			
134 -3	0311-06100	PW M6	4			
135	3702-19990	LINK PROTECTOR /MTX-85DY	1			
136	0203-06050	NUT M6	2			
137	0311-10160	PW M10	2			
138	0203-10080	NUT M10	2			
139 -1	0012-21040	BOLT 10X40 T	2			
139 -2	0302-10250	SW M10	2			
141	3703-55810	MUFFLER PROTECTOR /85DY	1			
142 -1	0012-20651	BOLT 6X55 T	1			
142 -2	0302-06150	SW M6	1			
143	0311-10160	PW M10	2			

CRANK CASE, ENGINE

NO.	PART/NO.	Parts Name	Q' TY	MK	MK2	REMARKS
144	0203-10080	NUT M10	2			
145 -1	0012-21040	BOLT 10X40 T	2			
145 -2	0302-10250	SW M10	2			
147	3704-72480	HOLDER, NOZZLE /L48	1			
148	3704-72490	CLAMP, SHOCK ABSORBER	1			
151	3703-55820	CRANK GEAR /MTX-85DY	1			
161	3660-10160	FRONT COVER / MTX-85	1			
171	3701-22500	CRANKCASE COVER /L /85DY	1			
172	3701-22510	CRANKCASE COVER /R /85DY	1			
173	3662-17340	COVER, CLEANER AY (UPPER)	1			
174	3662-17350	COVER, CLEANER AY (UNDER)	1			
201	9144-04807	ENGINE AY/L48N6-SMK2/76D	1			