

Specifications

Models	Z-51/30J RT	
--------	-------------	--

Measurements	Metric	US
Working height maximum*	17.59 m	57 ft 8 in
Platform height maximum	15.59 m	51 ft 2 in
Horizontal reach maximum	9.37 m	30 ft 9 in
Up-and-over clearance maximum	7.39 m	24 ft 3 in
▲ Platform length	0.76 m	2 ft 6 in
▲ Platform width	1.83 m	6 ft
▲ Height - stowed	2.13 m	7 ft
▲ Length - stowed	7.58 m	24 ft 11 in
▲ Width	2.29 m	7 ft 6 in
▲ Wheelbase	2.03 m	6 ft 8 in
▲ Ground clearance - centre	0.38 m	1 ft 2.8 in

Productivity

Lift capacity	227 kg	500 lbs
Platform rotation	160°	
Vertical jib rotation	135°	
Turntable rotation	355° non-continuous	
Turntable tailswing	zero	zero
Drive speed - stowed	7.2 km/h	4.5 mph
Drive speed - raised**	0.98 km/h	0.6 mph
Gradeability - 4WD - stowed***	45%	45%
Turning radius - inside	1.68 m	5 ft 6 in
Turning radius - outside	4.50 m	14 ft 9 in
Controls	12 V DC proportional	
Tyres	315/55 D20 foam filled	

Power

Power source	Deutz D2011 L03i 3 cylinder diesel 48 hp (35.8 kW)	
Auxiliary power unit	12 V DC	
Hydraulic tank capacity	83 L	22 gal
Fuel tank capacity	64.4 L	17 gal

Sound & Vibration Levels

Sound pressure level (ground workstation)	86 dBA
Sound pressure level (platform workstation)	79 dBA
Vibration	<2.5 m/s ² <8 ft 2 in/s ²

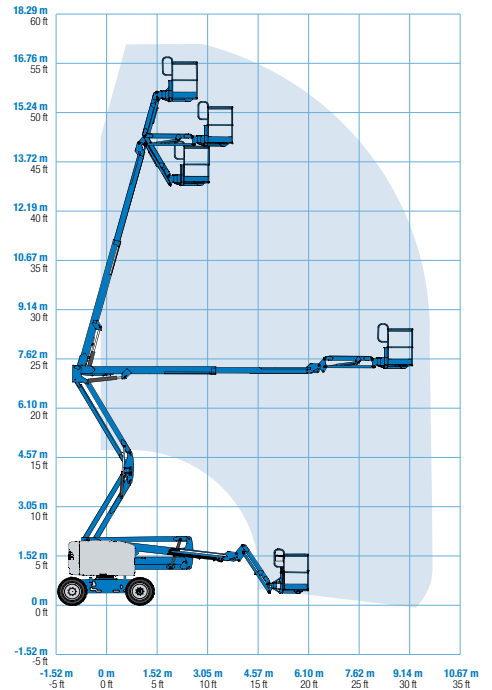
Weight****

	7,404 kg	16,322 lbs
--	----------	------------

Standards Compliance

AS 1418.10

Range Of Motion Z-51/30J RT

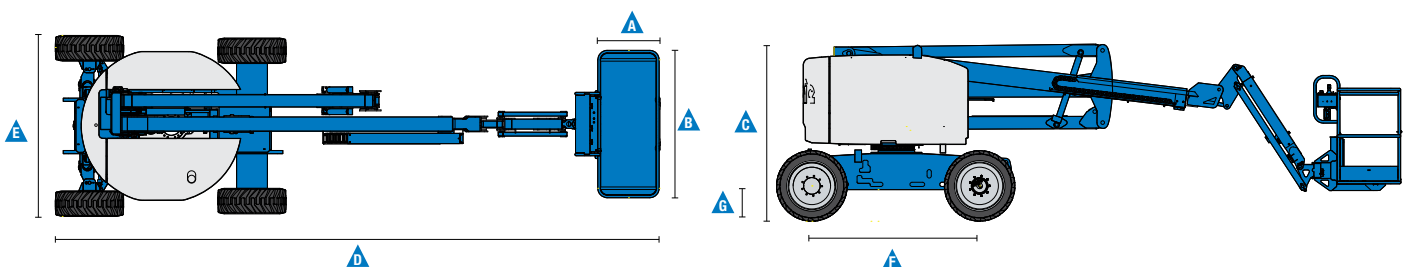


* The metric equivalent of working height adds 2 m to platform height. U.S. adds 6 ft to platform height.

** In lift mode (platform raised), the machine is designed to operate on firm, level surfaces only.

*** Gradeability applies to driving on slopes. See Operator's Manual for details regarding slope ratings.

**** Weight will vary depending on options and/or country standards.



Features

Standard Features

Measurements

- 17.59 m (57 ft 8 in) working height
- 9.37 m (30 ft 9 in) horizontal reach
- 7.39 m (24 ft 3 in) up and over clearance
- Up to 227 kg (500 lbs) lift capacity

Productivity

- Self-levelling platform
- Hydraulic platform rotation
- Proportional joystick controls
- Drive enable
- AC power cord to platform
- Horn
- Hour meter
- Tilt alarm
- Descent alarm
- 355° non-continuous turntable rotation
- Positive traction drive
- Two speed wheel motors
- Dual flashing beacons
- Thumb rocker steering

Power

- 12 V DC auxiliary power
- Swing out engine tray
- Intake air heater

Jib

- 1.52 m (5 ft) jib boom

Engine

- Deutz diesel 35.8 kW (48 hp)

Drive

- 4WD

Axle

- Active oscillation

Tyre

- Rough terrain foam-filled



Options & Accessories

Productivity Options

- Platform swing gate
- Half mesh platform inserts with swing gate
- Air line to platform
- Biodegradable hydraulic oil
- Fire resistant hydraulic oil
- Light package
- Lockable platform control box cover

Power Options

- 7 kVA hydraulic generator (240 V/50 Hz)
- Cold weather packages
- Diesel catalytic purifier muffler
- Diesel catalytic spark arrester muffler
- 240 V power to platform

Tyre Options

- Non Marking Tyres

Auckland Head Office
6-10 Parkway Drive,
Mairangi Bay, Auckland
Phone: (+64) 09 443 2436
Email: sales@yrco.co.nz

Auckland, Mt Wellington
20L Sylvia Park Road,
Mt Wellington, Auckland
Phone: (+64) 09 553 5470
Email: salesmtwell@yrco.co.nz

Wellington
8 Broken Hill Road,
Porirua, Wellington
Phone: (+64) 04 212 2456
Email: saleswell@yrco.co.nz

Christchurch
20 Nga Mahi Road,
Sockburn, Christchurch
Phone: (+64) 03 341 6923
Email: saleschch@yrco.co.nz

YR Youngman
Richardson