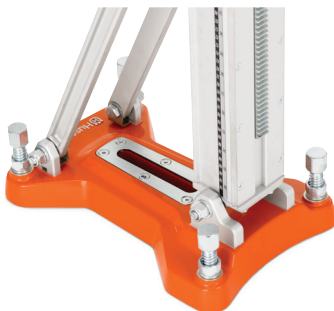


## Husqvarna DS 500

DS 500 is a medium-size drill stand, suitable for a wide range of professional core drilling operations. Combines high stability and sturdiness with surprisingly low weight. The quick connection features and low weight make handling easy and efficient. The slim-design carriage with optimised gear ratio works exceptionally well with Husqvarna DM 280, DM 340 and similar high-powered 1-phase drill motors. Recommended for drill bit diameters up to 400 mm.



### High stability and low weight

The steel-reinforced die cast magnesium base plate ensures rigid anchoring and keeps the overall weight down.

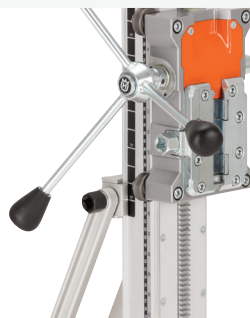


### Precision and performance

The design of the steel-reinforced extruded aluminum column is optimised for high precision and drilling performance. All hinges have a zero-play design to enable stability over time.

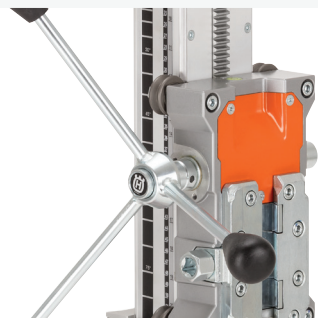
### Durable and sturdy

The all-metal design with an optimised setup of steel, aluminium and magnesium components ensures stability and durability without adding unnecessary weight.



### Easy to install and operate

The quick-release coupling for drill motor and easy adjustment of back support angle allow for easy setup and angle drilling. The carriage can easily be removed from the column when needed.



## FEATURES

- Durable and sturdy
- Precision and performance
- High stability and low weight
- Easy to install and operate
- Drilling ventilation channels and holes for pipes and cables.
- Drilling horizontally.
- Drilling multiple holes next to each other to make openings.
- Drilling upwards and downwards.

### Technical Specifications

DRILLING EQUIPMENT	
Drill bit diameter, max	500 mm
Drill bit length with recommended drill motor, max	680 mm
SPECIFICATIONS	
Column's angling	0–90°
DIMENSIONS	
Travel length, max	706 mm
Product size length	394 mm
Product size width	240 mm
Product size height	1050 mm
Weight	17,6 kg
PACKAGING	
Packaging length	1160 mm
Packaging width	315 mm
Packaging height	285 mm
Packaging volume	104 dm <sup>3</sup>

## ACCESSORIES



LONG LEVELING SCREWS  
598 93 90-01



WHEELS  
582 17 33-02



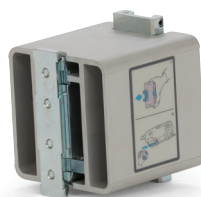
LONG AND SHORT COLUMN  
595 89 50-02



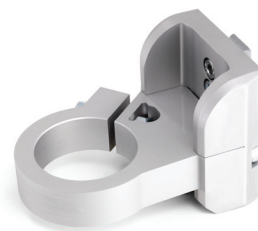
VACUUM PLATE  
597 63 51-01



HUSQVARNA VP 200  
544 92 90-01



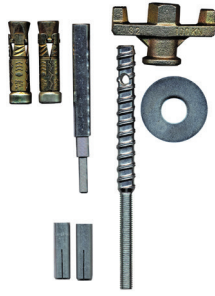
SPACER FOR QUICK MOUNTING  
579 50 10-02



RING ADAPTER  
581 25 71-01



ANCHORING KIT  
502 43 48-01



ANCHORING KIT  
590 76 67-01



ANCHORING SYSTEMS  
502 43 49-01



ANCHORS  
502 43 54-01



DRILL SNAP  
531 07 46-74

ANCHORING KIT  
590 68 57-01



DRILL SNAP  
531 07 20-03

SPACER FOR QUICK MOUNTING  
579 50 10-01



ANCHORING SYSTEMS  
502 43 50-01