

Mini Excavator

HD30V5

A 3.2 ton zero tail swing mini excavator
with exceptional performance



ROPS Cabin version available.

Mini Excavator

KATO

HD30V5

A 3.2 ton zero tail swing mini excavator with exceptional performance

Features

- Newly designed operator's space
- Zero tail swing
- Easy maintenance
- Low fuel consumption
- Powerful digging & quick response

Safety

- Gate lock system
- Neutral engine start
- ROPS / FOPS cabin or canopy
- Auto parking brake in swing & traction motors

Durability

- Easily adjustable pins for longer life
- Castle nuts for boom & arm joints
- Single structured swing pin

Easy Maintenance

- Large side covers for easy access & maintenance
- Wide, fully opening engine cover enables ease of maintenance
- Filters are conveniently located - Includes:
Large fuel filter, water separator & tank breather



Comfortable Operating Room



Centralised switches - includes key start, throttle dial, auto idle & eco mode



Easily visible monitor - includes travel speed, auto idle, eco mode, hour meter & engine management



Full suspension seat
- c/w retracting seat belt



Control Lever with proportional switch for auxiliary hydraulic



Traction foot pedals (fold away)



Mini Excavator



Easy maintenance



Large rear access for easy engine maintenance



Large side cover for easy service access



Water separator with indicator

Safety



Gate Lock System

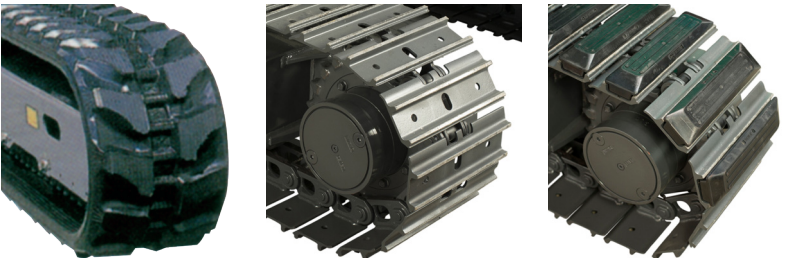


ROPS Cabin (Option)



Single-structured Swing Pin

Track options



Rubber Tracks / Steel Track / Rubber Pad Options

Easy fuel refilling



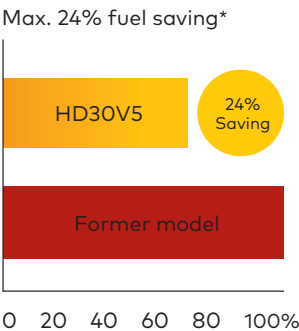
Fuel refill located in a convenient position

Easy skimming work



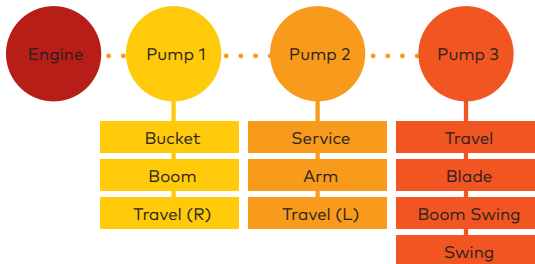
Close distance between Bucket Tooth and Dozer Blade

Lower Fuel Consumption



High Digging Power & Quick Response

Digging force increased by 10%
Highly responsive 3-pump system



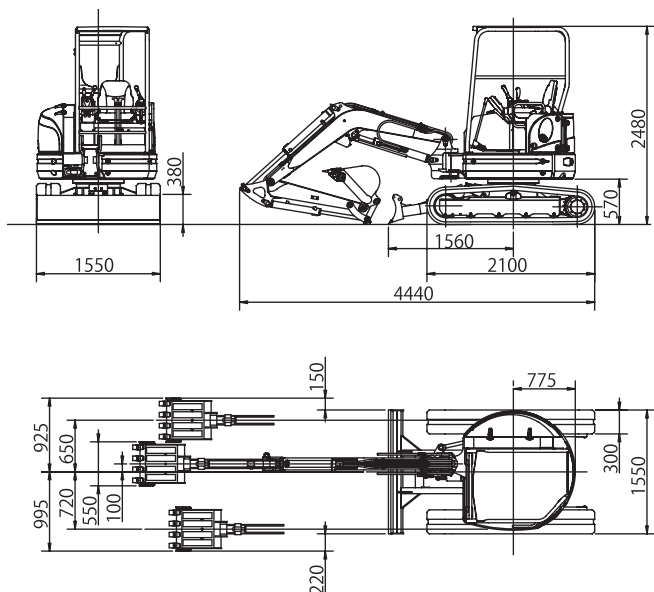
HD30V5

Mini Excavator

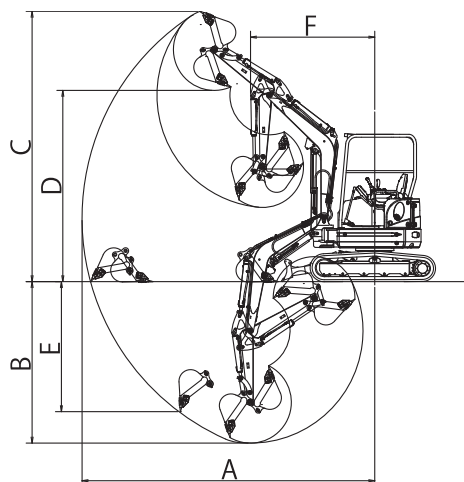


SPECIFICATIONS

■ Dimensions (Units mm)



■ Working Range (Units mm)



STANDARD

- Auxiliary piping
- Flashing light
- Removable counter weight
- Rubber tracks

OPTIONS

- ROPS canopy
- ROPS cabin
- Steel tracks
- Rubber pads
- Short arm
- Less counterweight

	Standard	Option (Short arm)
A. Max. digging radius	5190	4900
B. Max. digging depth	3000	2700
C. Max. digging height	4720	4630
D. Max. dumping height	3390	3290
E. Max. vertical digging depth	2470	2210
F. Min. front turning radius	2110	2080
At right boom swing	1820	1790

Performance		Boom swing system	
Bucket capacity	0.09m ³	Type	Boom offset with hydraulic cylinder
Bucket width (Standard)	550mm	Swing angle (L/R)	80°/50°
Operating weight: 4-Post(Cabin)	3105 (3255) kg	Hydraulic system	
Transportation weight: 4-Post(Cabin)	3030 (3180) kg	Pressure	24.5MPa 250kgf/cm ² / 20.6MPa 210kgf/cm ²
Swing speed	9.0min ⁻¹	Pump hydraulic flow	37.4 L/minx2+ 23.1L/min
Travel speed (low/high)	2.7 / 4.7km/h	Dozer blade	
Gradeability	58% (30°)	Size	1550/380mm
Ground pressure	28kPa (0.29kgf/cm ²)	Lift above ground / Drop below ground	375mm / 440mm
Max bucket digging force	29.1kN (2970kgf)	Max auxiliary flow	
Engine		1st Auxiliary line	61L/min
Model	YANMAR 3TNV88	2nd Auxiliary line	23L/min (Option)
Rated output (EU version)	17.5kW 23.8PS / 2200min ⁻¹		
Fuel tank capacity	42L		

Product Range:



PARTS AND SERVICE

We are proud of the back-up service we offer to customers. The importance of stocking genuine spare parts for all the equipment we supply is a high company priority.



Auckland, Head Office
6-10 Parkway Drive,
Mairangi Bay,
Auckland
(+64) 09 443 2436
sales@yrco.co.nz

Auckland, Mt Wellington
20L Sylvia Park Road,
Mt Wellington,
Auckland
(+64) 09 553 5470
salesmtwell@yrco.co.nz

Waikato
3/31 Chafer Place,
Te Rapa,
Hamilton
(+64) 07 595 0245
saleswaikato@yrco.co.nz

Wellington
8 Broken Hill Road,
Porirua,
Wellington
(+64) 04 212 2456
saleswell@yrco.co.nz

Christchurch
20 Nga Mahi Road,
Sockburn,
Christchurch
(+64) 03 341 6923
saleschch@yrco.co.nz

