



**MAKINEX®**

# Surface Preparation Jackhammer Trolley

A Versatile Demolition Tool That Removes Floor Tiles, Parquetry, and Mortar Beds.



**Demolish up to 6x Faster**



**Significantly Reduces Operator Fatigue and Injury**



**Suit most 16kg to 19kg Jackhammers**

Demolish with unmatched speed. Rip through ceramic tiles, cement, and more up to 6 times faster. The innovative design reduces impact and fatigue, with 80-degree angles across 5 settings. Streamlined and robust, the trolley boasts an easy-to-use spring and brake lever for angle adjustments and an inbuilt dampening system that minimizes impact, vibration, injury risk, and muscle fatigue.



## SPECIFICATIONS:

Vacuum Attachment sold separately

Weight (trolley without jackhammer)	27.5kg
Dimensions (trolley without jackhammer)	L 1110mm x H 540mm x W 570mm
Suitable for 16kg (35lbs) jackhammer models	Bosch GSH16, Dewalt D25901K-XE, Hilti 1000 & 1500, Hikoki H65SB3, Makita 1307 & 1317

## Ideal For:



Demolition – Multi Angle Adjustments



Construction



Renovators



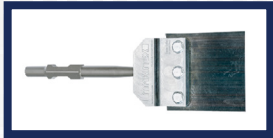
Hire



Compatibility with most Jackhammers



## Accessories:



**1. Tile Smasher Head**  
with 30mm HEX Shank Combo V2  
TSHC-SS-AU-V2



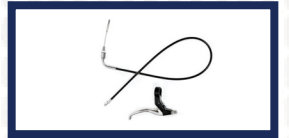
**2. Flippable Wide Chisel**  
WCAU-404



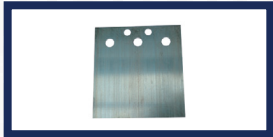
**3. Tile Smasher Head**  
with HiTi HEX Shank Combo V2  
TSHC-HS-US-V2



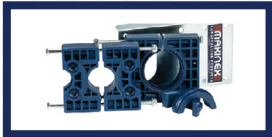
**4. Handle Grips**  
MAK-UP-10-V2



**5. Brake Lever and Cable**  
JHT-99-63-V2



**6. Tile Smasher Blade**  
TSH-B



**7. Universal Block Set**  
JHTB-U-2



**8. Tile Smasher Head Bolts**  
TSH-BS-V2



**9. Tile Smasher Attachment Bolts**  
TSH-BS-V2-KIT



**10. Vacuum Attachment**  
JHT-VA-01-00

## Makinex Surface Preparation Range:



**1. Mixing Station MS100**



**2. Mixing Station MS150**



**3. Floor Stripper**

**Auckland, Head Office**  
6-10 Parkway Drive,  
Mairangi Bay,  
Auckland  
(+64) 09 443 2436  
sales@yrco.co.nz

**Auckland, Mt Wellington**  
20L Sylvia Park Road,  
Mt Wellington,  
Auckland  
(+64) 09 553 5470  
salesmtwell@yrco.co.nz

**Waikato**  
3/31 Chafer Place,  
Te Rapa,  
Hamilton  
(+64) 07 595 0245  
saleswaikato@yrco.co.nz

**Wellington**  
8 Broken Hill Road,  
Porirua,  
Wellington  
(+64) 04 212 2456  
saleswell@yrco.co.nz

**Christchurch**  
20 Nga Mahi Road,  
Sockburn,  
Christchurch  
(+64) 03 341 6923  
saleschch@yrco.co.nz

**40+**  
CELEBRATING  
OVER 40 YEARS  
IN BUSINESS

**YR Youngman  
Richardson**