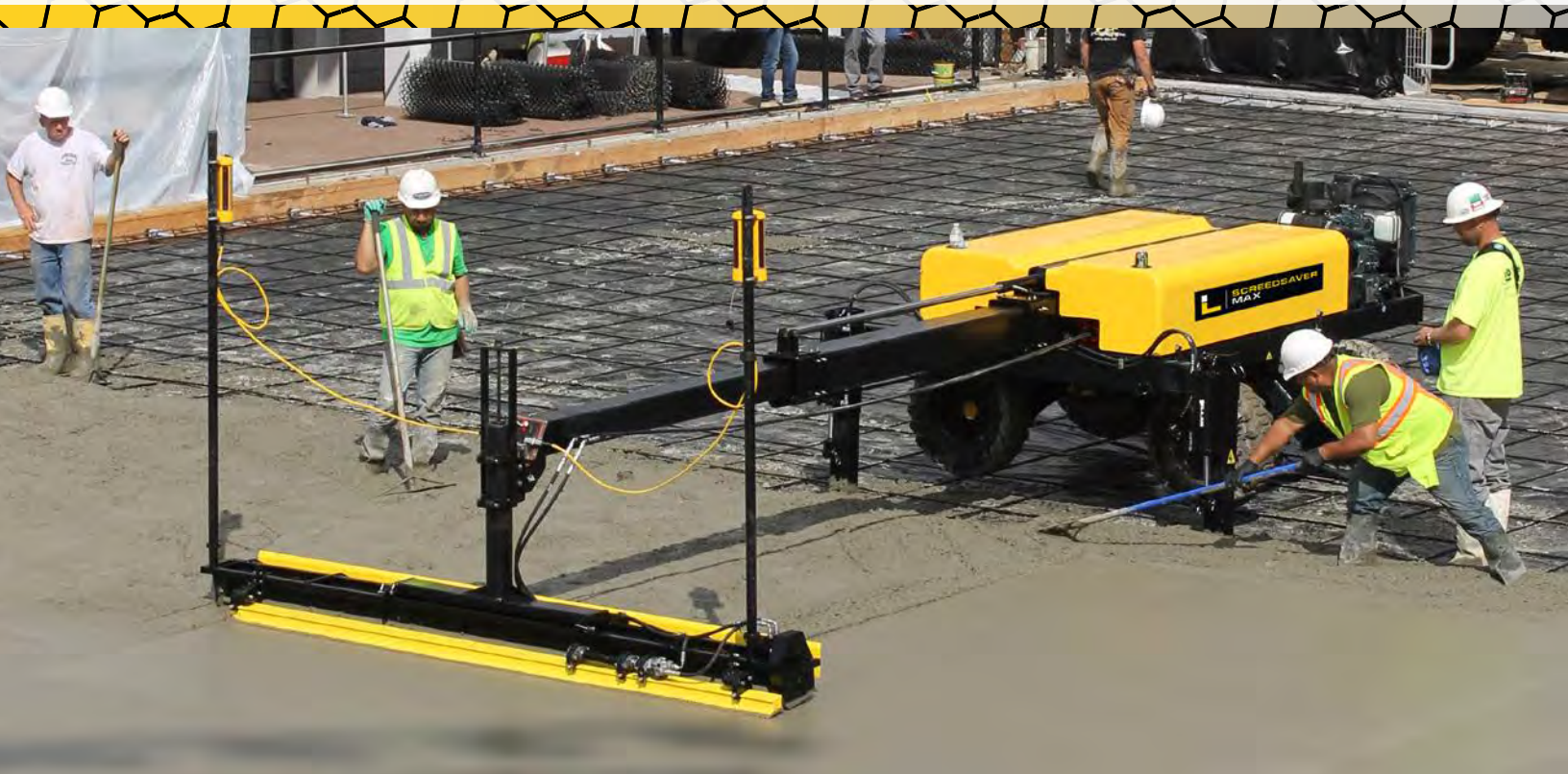


LIGCHINE

SCREEDSAVER MAX



SCREEDSAVER MAX

The SCREEDSAVER™ MAX is the best return-on-investment screed machine available given its high-production output and value price point. Like every SCREEDSAVER model, the MAX includes our standard features of wireless remote control, fully automatic operation, 2D laser control and 3D GPS OR LPS control (optional). Contractors can haul it with a pickup truck and trailer combination. The MAX boasts FL numbers that can only be achieved by a boom operated screed.

Screed Coverage: The MAX offers 200 square feet of coverage per pass with a 18' boom combined with a 10' SCREEDSAVER head.

Engine: Kubota D902 25 hp Tier 4 Diesel

Drive System: 2 wheel proportional drive with wireless remote control.

Grade/Slope/Dual Slope Control: Trimble® LR30 Eyes (included).

Ease of Transport: The MAX can be towed with pickup truck and trailer and pass through 6' door openings.

LIGCHINE

SCREEDSAVER MAX



Engine Size	Kubota D902 (25 hp) Tier 4 Final
Machine Size (retracted)	W-6' 4" (1.9 m) x L-14' 5" (4.5 m) x H-4' 6" (1.39 m)
Machine Weight	4,380 lbs. (1,987 kg) + screed head
Steering System (hydraulic)	2 Wheel Steering
Drive System (hydraulic)	2 Wheel Proportional Drive
Parallel to the Pour Driving Capable	Yes, 90° Pivoting Undercarriage Drive Frame
Machine Operation Control	100% Wireless Remote Control
Coverage per screed pass (no overlap)	220 sq. ft. (20.44 m²)
Standard Screed Head Width	10' (3 m)
Boom Reach	18' (5.5 m)
Transport with Pickup Truck and Trailer	Yes
Alternate Screed Head Options	10' SCREEDSAVER Head, 9' High Performance Head
Grade/Slope/Dual Slope control (standard)	Trimble® LR30 Eyes (included)
Contoured Slope 3D capable (optional)	Topcon 3D mmGPS Satellite control or LPS Robotic

Auckland Head Office
6-10 Parkway Drive,
Mairangi Bay, Auckland
Phone: (+64) 09 443 2436
Email: sales@yrco.co.nz

Auckland, Mt Wellington
20L Sylvia Park Road,
Mt Wellington, Auckland
Phone: (+64) 09 553 5470
Email: salesmtwell@yrco.co.nz

Wellington
8 Broken Hill Road,
Porirua, Wellington
Phone: (+64) 04 212 2456
Email: saleswell@yrco.co.nz

Christchurch
20 Nga Mahi Road,
Sockburn, Christchurch
Phone: (+64) 03 341 6923
Email: saleschch@yrco.co.nz

YR Youngman
Richardson