

JIBBI U-1570

YR[®]

PATENT PENDING
ALMACRAWLER 



U **ULTRA**
L **LIGHT**
CRAWLER RANGE

PRO ACTIVE LEVELLING

DYNAMIC LEVELLING

CRAWLER TELESCOPIC BOOM

ALMACRAWLER 
ALMAC-PACIFIC.COM.AU

JIBBI U-1570

Self-propelled crawler with an
Ultralight Telescopic boom of 2.9
tonnes and 15.4 metres high.



Technical data

	EVO	LTH
Max working height	15.40 m	
Max height basket floor	13.40 m	
Max moving height	9.50 m	
Max outreach (load 80 kg)	9.65 m	
Max outreach (load 140 kg)	8.23 m	
Max outreach (load 200 kg)	7.33 m	
Max outreach (load 250 kg)	6.83 m	
Rotation angle	+/-110°	
Basket size	1.4 x 0.7 m	
Basket rotation angle	+/- 90°	
Max basket capacity	250 kg (2 p.)	
Length in stowed position	4.92 m	
Min width in stowed position	1.35 m	
Med working width	1.98 m	
Max working width	2.45 m	
Min height in stowed position	1.99 m	
Longitudinal leveling	+/- 15°	
Lateral leveling	+/- 15°	
Max gradeability	25°	
Max side gradeability	25°	
Drive speed (fast)	2.5 km/h	2.0 km/h
Security speed	0.4 km/h	

Weights

Traffic load (max working width)	3.40 kN/m2	3.50 kN/m2
Total weight	~ 2895 kg	~ 2950 kg

Power

3TNM68 -AS Yanmar engine (diesel)	14 kW - 19.2 Hp @3600rpm	No
Lithium battery pack 300Ah-48V	No	DC 4 kW
N° 2 battery charger 20Ah-48V (Re-charging time)	No	6 h

Extras - On Demand

Non-marking tracks
Electric pump 220V-2.2KW / 50Hz
Radio remote control with rechargeable battery
Arctic lubricant for cold climate
Ultrasonic Anti-collision System

MyAlmac CONTROL PANEL



Machine settings via remote control panel

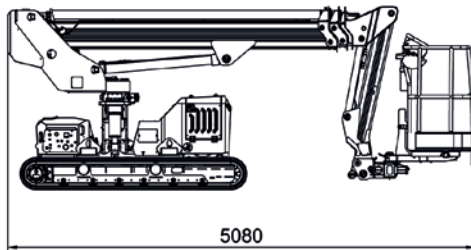
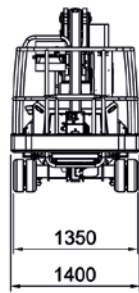
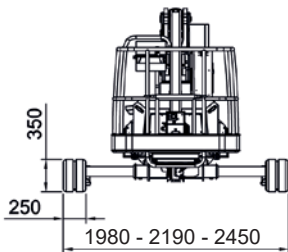
Ultrasonic anti-collision
system

Max basket
capacity 250 kg

Ultralight aluminium
telescopic boom

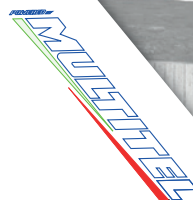
Integrated Drive System Using a single joystick

Cable remote console by AUTECH



Bi-leveling up to 22°

**ULTRA
LIGHT**
CRAWLER RANGE



Resulting from the partnership between **AlmaCrawler** and **Multitel Pagliero**, the **Ultralight Series** represents the perfect combination of innovation, coupled with AlmaCrawler's traditionally advanced features, all in a single machine.

The Jibbi U-1570 EVO/LTH consists of a sturdy yet lightweight structure courtesy of specially manufactured aluminium alloy. Weighing *less than 2.9 tonnes, this lightweight performance machine is easy to transport with a standard trailer. Combined with the innovative and patented AlmaCrawler Bi-Levelling undercarriage, this self-propelled, tracked machine boasts an impressive working height of over 15 meters, and allows a load capacity in the basket of up to 250kg. .

Thanks to dynamic and pro-active leveling technology, the U-1570 EVO/LTH can navigate uneven ground and/or steep slopes of up to 22°, making it one of the most versatile and lightweight crawler booms available in Australia.

Sustainably sourced lithium battery version (LTH), houses an impressive 300Ah-48V battery pack at output DC 4kW, making the LTH model quiet, efficient and ideal for both indoor and outdoor applications.

*Diesel version

JIBBI U-1570

15.4m

MAX W.H.

250kg

CAPACITY

19.2Hp

POWER

$\pm 15^\circ$

LONG. LEVEL.

2.5km/h

SPEED

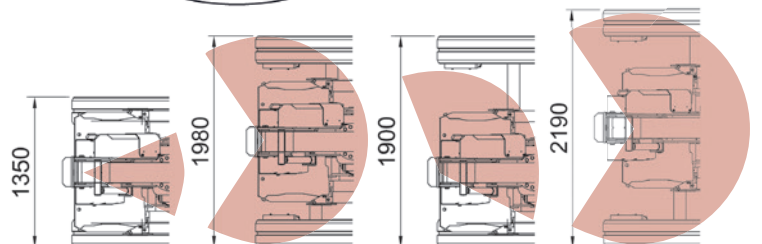
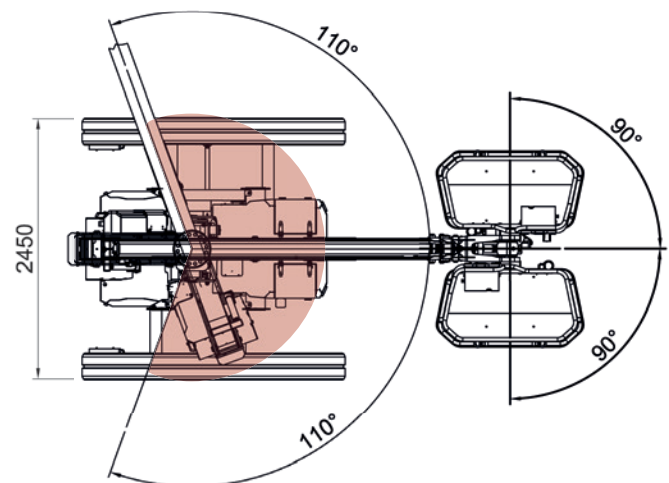
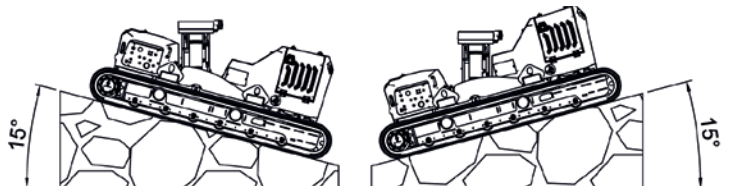
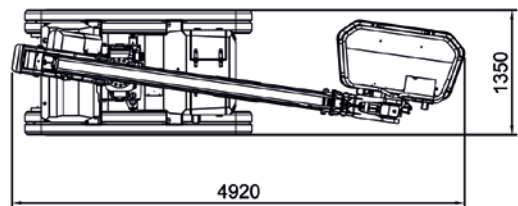
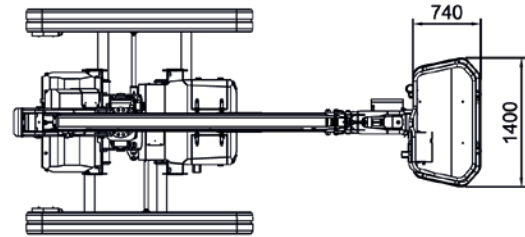
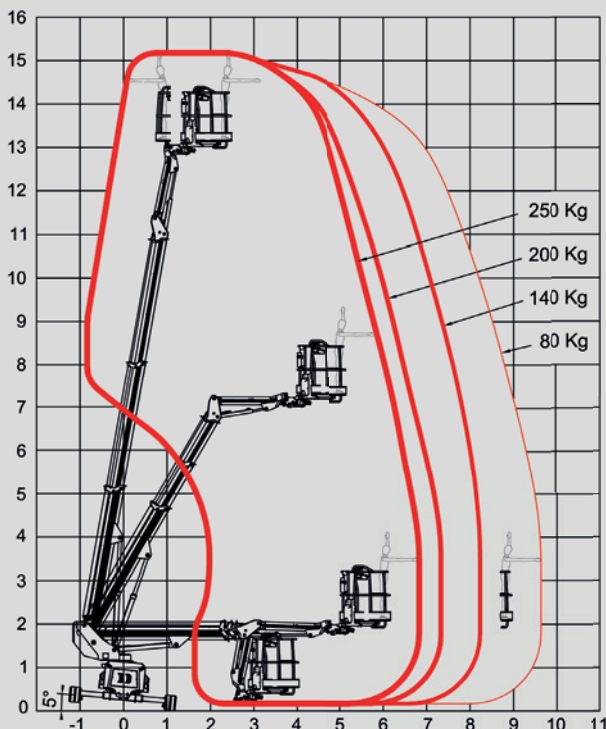
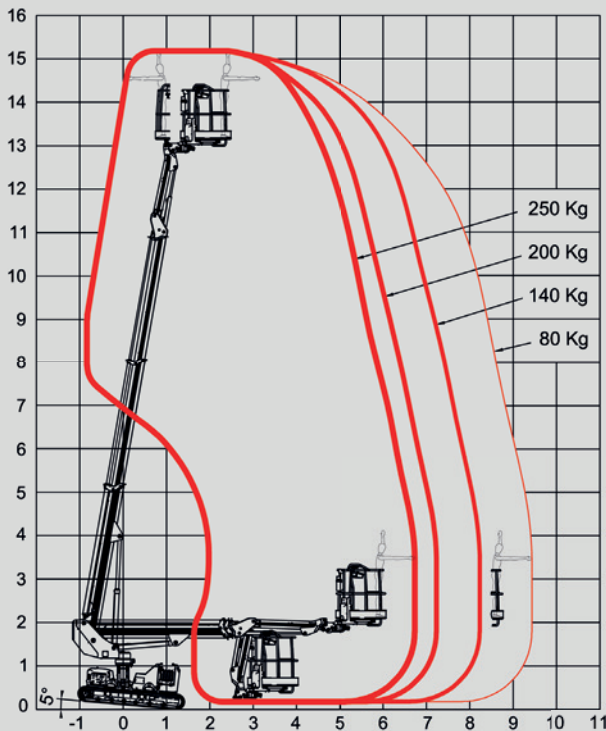
$\pm 15^\circ$

LATER. LEVEL.

Dynamic Working Performance

Progressive outreach control for effective working conditions (basket capacity, track width, ground inclination).

- 80 kg
- 140 kg
- 200 kg
- 250 kg



Auckland, Head Office
6-10 Parkway Drive,
Mairangi Bay,
Auckland
(+64) 09 443 2436
sales@yrco.co.nz

Auckland, Mt. Wellington
20L Sylvia Park Road,
Mt. Wellington,
Auckland
(+64) 09 553 5470
salesmtwell@yrco.co.nz

Waikato
3/31 Chafer Place,
Te Rapa,
Hamilton
(+64) 07 595 0245
saleswaikato@yrco.co.nz

Wellington
8 Broken Hill Road,
Porirua,
Wellington
(+64) 04 212 2456
saleswell@yrco.co.nz

Christchurch
20 Nga Mahi Road,
Sockburn,
Christchurch
(+64) 03 341 6923
saleschch@yrco.co.nz

4C+
CELEBRATING
OVER 40 YEARS
IN BUSINESS

**YR Youngman
Richardson**

ALL DATA REPORTED IN THIS CATALOGUE ARE NOT BINDING. ALMAC SRL RESERVES THE RIGHT TO CHANGE SPECIFICATIONS WITHOUT PRIOR NOTICE.