

Solids handling 'S' pump

Pump end specification

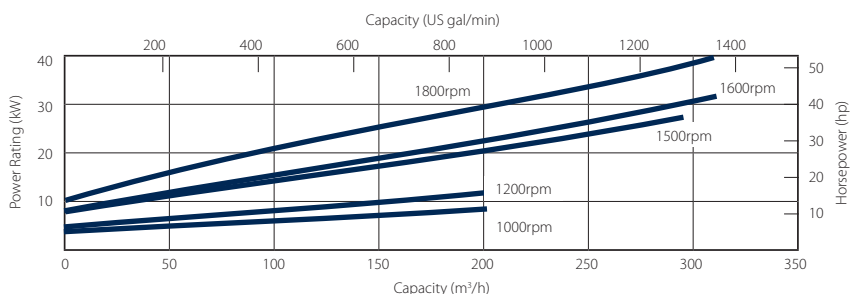
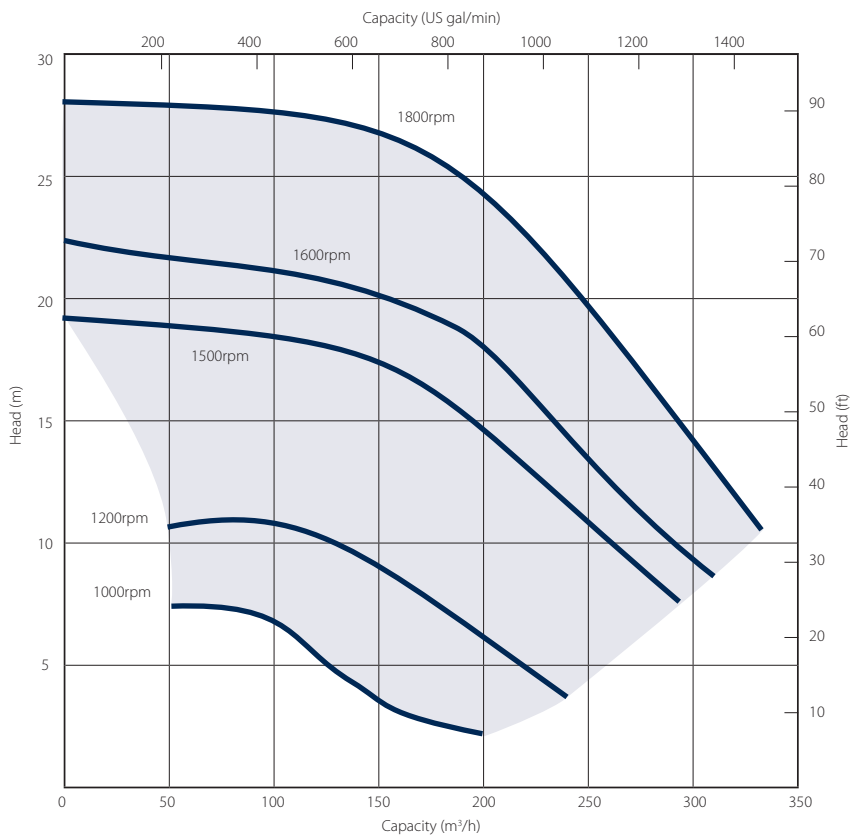
	Metric	US
Capacity	333 m ³ /h	1466 gpm
Total Head	28m	92 ft
Max. Solids Size	100mm	4 in
Self Priming Lift	8.8m	28 ft
Air Handling	24 l/s	50 cfm
Selprime® Absorbs	2.2 kW	3 hp
Power Required	42 kW	56 hp
Pump Speed Max.	1800 rpm	1800 rpm
Impeller Type	Vortex	Vortex
Impeller Blades	6	6
Impeller Diameter	235 mm	9.25 in
Inlet Port	DN 150 PN6	6 in
Outlet Port	DN 150 PN6	6 in

Priming method - Selprime®

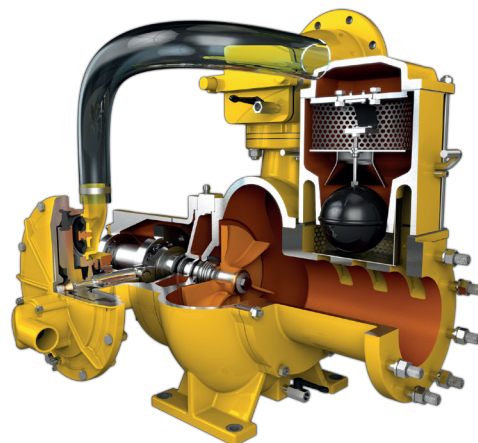
The unique original Selwood self priming system utilising a water tolerant diaphragm air pump. An environmentally friendly design that has none of the problems of oil vapour emissions and oil emulsification associated with other priming systems.

Pump end materials

Pump Casing	Grey Iron BSEN 1561 Grade EN-GJL-200
Impeller	Cast Iron BSEN 1563 Grade EN-GJS-450-10
Wear Plates	NA
Shaft	Steel BS EN 10277 Grade C40+C
NRV Body	Grey Iron BSEN 1561 Grade EN-GJL-200
Mechanical Seal	Silicon Carbide v Silicon Carbide
Pump End Bearing	Ball
Drive End Bearing	Cylindrical Roller



Please note: The above curves cover the complete range and ability of the pump unit. Actual performance will be subject to the engine / motor indicated overleaf and medium pumped.



Solids handling 'S' pump

Our 'S Range' pumps are the market-leader when it comes to solids handling.

The vortex-flow design (Seltorque®), SelPrime® automatic self-priming, emission compliant engines and ease of operation means trouble-free pumping of

- raw and unscreened sewage
- sludge or slurry
- water with fine and large solids
- water containing rags and fibres

Reducing environmental impact

We are committed to reducing our environmental impact by producing the most efficient equipment we can.

All Selwood Eco and Eco5 pumps can run on hydrotreated vegetable oil (HVO) fuel as an alternative to diesel.

Super Silent units include:-

- Quietest pumps on the market – EU directive 2000/14/EC
- Improved canopy design
- Auto stop/start control
- Oil drain kit
- Bulk fuel kit
- Remote pump monitoring



Standard build	Isuzu Super Silent Eco		Hatz Super Silent Eco5 Pt No. 1520055S60	
	Metric	US	Metric	US
Length	245 cm	96 in	265 cm	104 in
Width	152 cm	60 in	120 cm	47 in
Height	174 cm	68 in	182 cm	72 in
Dry Weight	1763 kg	3887 lb	1750 kg	3858 lb
Gross Weight	1945 kg	4288 lb	1950 kg	4299 lb
Sound Power	89 LWA		94 LWA	
Sound Pressure @ 1m (3ft)	69 db(A)		72 db(A)	
Sound Pressure @ 7m (23ft)	62 db(A)		63 db(A)	
Engine	Isuzu 4LE2X		Hatz 4H50TICD	
Emission Rating	Stage IIIB	Tier 4 Final	Stage V	Tier 4 Final
Engine Speed - Max	1800 rpm		1800 rpm	
Engine Speed - Min	1000 rpm		1600 rpm	
Fuel Tank Capacity.**	219 lt	58 US gal	210 lt	55 US gal
BEP - Fuel Consumption	7.8 lt/hr	2.06 US gal/hr	6.5 lt/hr	1.72 US gal/hr

** Fuel tank capacity can be increased with the addition of an auxiliary fuel tank.

Installation drawings are available upon request.

Remote pump monitoring

Selwood SelWatch®

- Remote pump condition monitoring
- Cloud based information management telemetry system
- Monitor pump & engine conditions via Canbus module which links the engine and ECU
- Ability to measure a multitude of pump & engine conditions including:-
 - Discharge & suction pressure
 - Engine speed
 - Fuel conditions
 - Engine temperature

Please note: SelWatch may not be available in all territories. Contact your local Selwood Sales Manager or Distributor for details.

Optional extras

- Training
- Genuine parts kits
- Valves / Fittings
- Pump accessories
- Tanks & filtration
- Pipe stoppers
- Hose / pipework

Auckland Head Office
6-10 Parkway Drive,
Mairangi Bay, Auckland
Phone: (+64) 09 443 2436
Email: sales@yrco.co.nz

Auckland, Mt Wellington
20L Sylvia Park Road,
Mt Wellington, Auckland
Phone: (+64) 09 553 5470
Email: salesmtwell@yrco.co.nz

Wellington
8 Broken Hill Road,
Porirua, Wellington
Phone: (+64) 04 212 2456
Email: saleswell@yrco.co.nz

Christchurch
20 Nga Mahi Road,
Sockburn, Christchurch
Phone: (+64) 03 341 6923
Email: saleschch@yrco.co.nz

