

VXB

BATTERY POWER

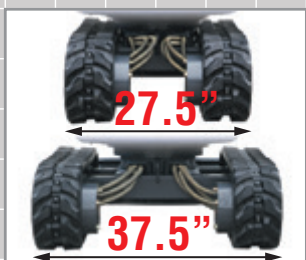


Bucket cylinder hose is placed inside of arm.

Improves forward visibility and helps prevent damage to the hose.

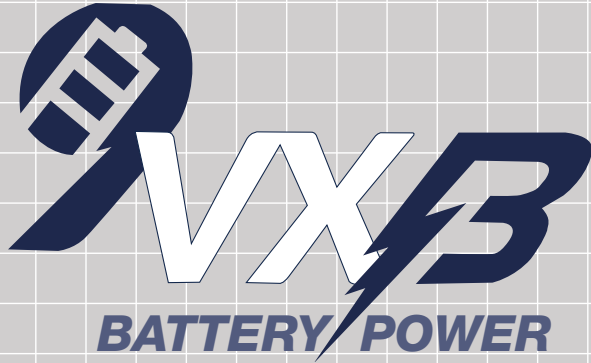


Auxiliary Attachment Hook Up Standard

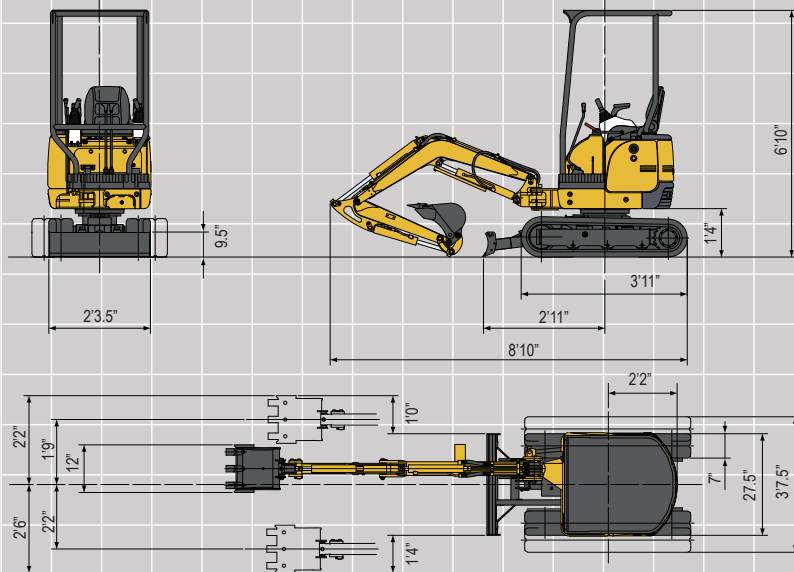


Expandable Undercarriage

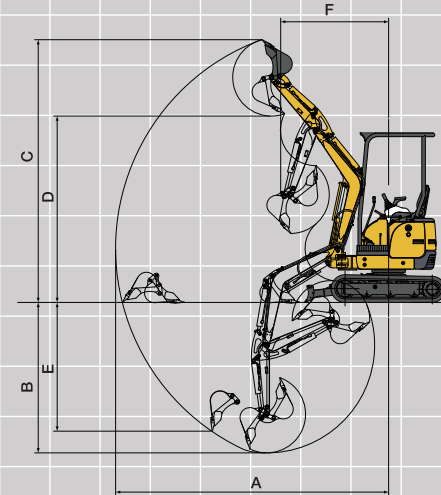
- *Lithium Ion Battery Pack*
- *8 hour run time on full charge*
- *No battery memory - can be charged at anytime*
- *Throttle control for easy operation*
- *Backfill blade with retractable blade extensions*
- *Charger comes standard*
- *Fast 3 hour charging system available*
- *3 Year - 1,000 hour warranty*



■ Dimensions



■ Working Range



A Max. digging radius	9'9"
B Max. digging depth	5'2"
C Max. digging height	9'0"
D Max. dumping height	6'6"
E Max. vertical digging depth	3'10"
F Min. front turning radius	4'0"
At right boom swing	3'1"

■ 9VXB Specifications

Model	9VXB
• Performance	
Bucket capacity	.8 cu. ft.
Bucket width	12"
Operating weight	2060 lbs
Transportation weight	1885 lbs
Swing speed	8.7 rpm
Travel speed (low/high)	1.1/2.2 mph
Gradeability	30°
Ground pressure	3.8 psi
Max.bucket digging force	2360 lbs
• Boom swing system	
Type	Boom offset with hydraulic cylinder
Swing angle (L/R)	50° / 90°
• Hydraulic system	
Pressure	2350 psi
Pump type	Gear
Auxiliary Flow	5 gpm
• Dozer blade	
Size	27.5" x 11"
Lift above ground / Drop below ground	9" / 8"

Expandable Undercarriage
27.5"-37.5" Variable Width



**Retractable
Blade Extensions**

KATO CES

Bucket Options

• Bucket
8"
12"
16"
18"

Auckland Head Office
6-10 Parkway Drive,
Mairangi Bay, Auckland
Phone: (+64) 09 443 2436
Email: sales@yrco.co.nz

Auckland, Mt Wellington
20L Sylvia Park Road,
Mt Wellington, Auckland
Phone: (+64) 09 553 5470
Email: salesmtwell@yrco.co.nz

Wellington
8 Broken Hill Road,
Porirua, Wellington
Phone: (+64) 04 212 2456
Email: saleswell@yrco.co.nz

Christchurch
20 Nga Mahi Road,
Sockburn, Christchurch
Phone: (+64) 03 341 6923
Email: saleschch@yrco.co.nz