

PRODUCT HIGHLIGHTS**Suitable for Narrow Spaces**

- Narrow width with zero tail sweep

Operating Efficiency

- The working platform can be lifted and lowered to any position without need to operate the secondary arm

Reliable

- The simple linkage mechanism design and hydraulic leveling are reliable during operation

Precision Performance

- 3 joysticks with variable proportional control, accuracy in reaching the operation target



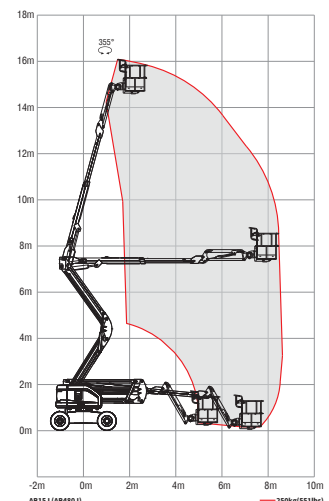
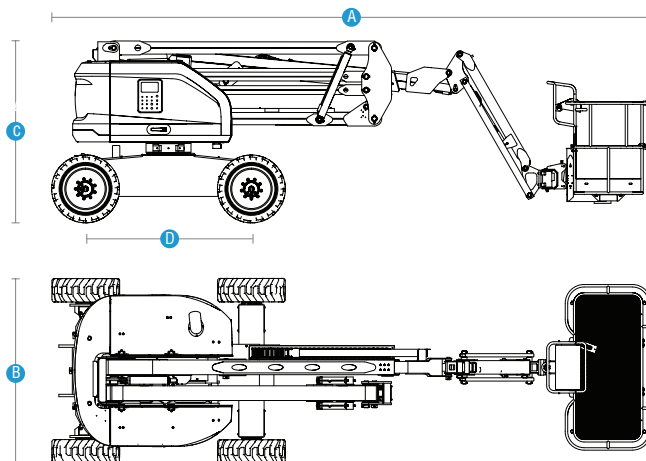
Standard Features		
Oscillating function	7-in display screen	4WD × 2WS
Proportional control with 3 joysticks	Automotive-grade sleeves for all pipes	4-wheel brake
Hydraulic platform leveling	160° Platform rotation	Weighing system
Tilt protection system	Max tilt rating to 5°	Telematics-ready connector
Flashing beacon	White noise alarm	Emergency lowering system
Secondary guarding device	1.83m(6') platform	Half mesh (For platform with swinging gate)
Non-marking tires	Battery isolator	
Options & Accessories		
AC power to platform	1.45m (4'9") platform	
Platform work light		
Glazier kit(For platform with swinging gate)		

ENGINE POWERED ARTICULATING BOOM LIFTS

AB15J (AB480J)

Compliant with CE/AS/EAC standards

Model	AB15J (AB480J)
Dimensions	
Max Platform Height	14.7 m (48'3")
Max Working Height	16.7 m (54'9")
Max Horizontal Reach	8.5 m (27'11")
Max Up and Over Clearance	7.2 m (23'7")
A Stowed Length	7.35 m (24'1")
B Stowed Width	2.26 m (7'5")
C Stowed Height	2.22 m (7'3")
Stowed Length (Transport)	7.35 m (24'1")
Stowed Width (Transport)	2.26 m (7'5")
Stowed Height (Transport)	2.22 m (7'3")
D Wheelbase	2.03 m (6'8")
Ground Clearance	0.32 m (1'1")
Platform Size (L×W×H)	1.83 × 0.85 × 1.1 m (6'×2'9"×3'7")
Performance	
Max Platform Capacity	250 kg (551 lbs)
Max Platform Occupants	2 Persons
Drive Speed (Stowed)	5 km/h (3.1 mph) 4 WD, 7 km/h (4.4 mph) 2 WD
Drive Speed (Raised)	1.1 km/h (0.7 mph)
Gradeability	30%(2WD)/40%(4WD)
Turntable Rotation	355°/Non-Continuous
Platform Rotation	160°
Tilt Rating	5°
Turning Radius (Inside/Outside)	1.8 m/4.5 m(5'11"/14'9")
Turntable Tail-Swing	0 m(0)
Max Allowable Side Force	400 N (90 lbf)
Max Allowable Wind Speed	12.5 m/s (28 mph)
Tire Spec/Type	315/55D20 (Foam-filled)
Power	
Drive × Steer	4 WD X2 WS
Engine	36.3 kW/2800 rpm/D2011L3I/Deutz/EU Stage 3A ,EPA Tier 3,
Hydraulic Tank Capacity	90 L (19.8 gal (UK)/23.8 gal (US))
Diesel Tank Capacity	55 L (12.1 gal (UK)/14.5 gal (US))
System Voltage	12 VDC
Weight	
Weight	7,080 kg (15,609 lbs) 2WD / 7,280 kg (16,050 lbs) 4WD
Standards Compliance	
CE/AS/EAC	



Auckland, Head Office
6-10 Parkway Drive,
Mairangi Bay,
Auckland
(+64) 09 443 2436
sales@yrco.co.nz

Auckland, Mt Wellington
20L Sylvia Park Road,
Mt Wellington,
Auckland
(+64) 09 553 5470
salesmtwell@yrco.co.nz

Waikato
3/31 Chafer Place,
Te Rapa,
Hamilton
(+64) 07 595 0245
saleswaikato@yrco.co.nz

Wellington
8 Broken Hill Road,
Porirua,
Wellington
(+64) 04 212 2456
saleswell@yrco.co.nz

Christchurch
20 Nga Mahi Road,
Sockburn,
Christchurch
(+64) 03 341 6923
saleschch@yrco.co.nz

4C+
CELEBRATING
OVER 40 YEARS
IN BUSINESS

**YR Youngman
Richardson**