

ENGINE POWERED TELESCOPIC BOOM LIFTS  
**TB20J PLUS (TB660J PLUS)**  
Compliant with CE/ANSI/CSA/AS/EAC standards



## PRODUCT HIGHLIGHTS

### High Capacity

- Plus series boom lifts hold up to 1,000 lb (restricted)/ 661lb (unrestricted) platform capacity allowing you to carry up to 3 occupants plus material and tools to get your job done easily

### Oscillating Function

- Both the active and inactive states have a oscillating function, allowing work on inclined and uneven ground

### Precision Performance

- The upper control box is equipped with 3 full-proportional handles for gradual control of boom lifting, telescoping, turntable rotation and driving speed
- Operate with smooth starting and stopping and precision approach to your worksite target



Standard Features		
Active oscillating function	7-in display screen	4WD × 2WS
Proportional control with 3 joysticks	Automotive-grade sleeves for all pipes	Weighing system
Hydraulic platform leveling	160° Platform rotation	Emergency stop system
Tilt protection system	Max tilt rating to 5°	Half mesh (For platform with swinging gate)
Flashing beacon	White noise alarm	Fault diagnosis system
Secondary guarding device	Battery isolator	Non-marking tires
Manual storage box	2.44 m(8') platform with swing gate	Telematics-ready connector
Options & Accessories		
AC power to platform	1.45 m (4'9") platform	
1.83 m(6') work platform		
Glazier kit(For platform with swinging gate)		
Platform work light		

**SINOBOOM™**

**PARTNERS IN ACCESS™**

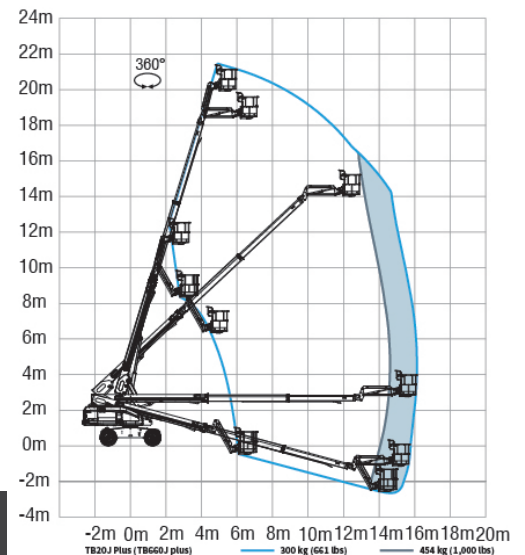
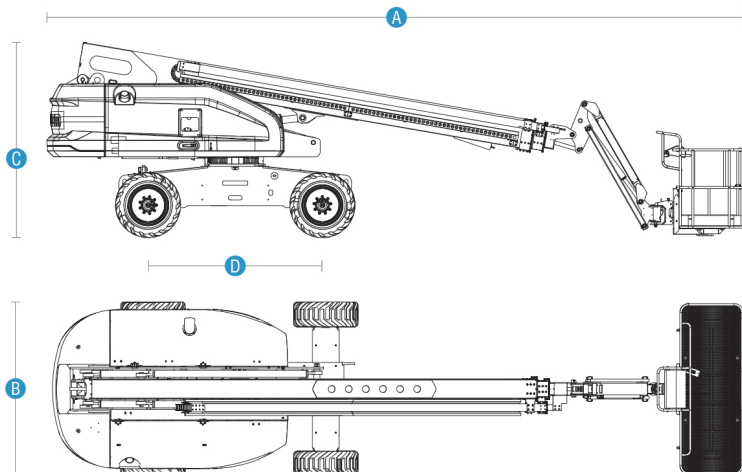
SINOBOOM.AU | SALES@SINOBOOM.COM  
32-34 Marni Street, Dandenong South, VIC Australia 3175

## ENGINE POWERED TELESCOPIC BOOM LIFTS

### TB20J PLUS (TB660J PLUS)

Compliant with CE/ANSI/CSA/AS/EAC standards

Model	TB20J Plus (TB660J Plus)
Dimensions	
Max Platform Height	20 m (65'7")
Max Working Height	22 m (72'2")
Max Horizontal Reach	14.6 m/16.1m (47'11"/52'10")
A Stowed Length	9.99 m (32'9")
B Stowed Width	2.49 m (8'2")
C Stowed Height	2.79 m (9'2")
Stowed Length (Transport)	8.12 m (26'8")
Stowed Width (Transport)	2.49 m (8'2")
Stowed Height (Transport)	2.77 m (9'1")
D Wheelbase	2.49 m (8'2")
Ground Clearance	0.46 m (1'6")
Platform Size (L×W×H)	2.44 m×0.91 m×1.1 m (8'×3'×3'7")
Performance	
Max Platform Capacity(Restricted/Unrestricted)	454 kg/300 kg (1,000 lbs/661 lbs)
Max Platform Occupants(Restricted/Unrestricted)	3 persons/ 2 persons
Drive Speed (Stowed)	0~4.8 km/h (0~3 mph)
Drive Speed (Raised)	0~1.1 km/h (0~0.68 mph)
Gradeability	45%
Turntable Rotation	360°/Continuous
Platform Rotation	160°
Tilt Rating	5°
Turning Radius (Inside/Outside)	2.4 m/5.55 m (7'10"/18'3")
Turntable Tail-Swing	1.45 m (4'9")
Max Allowable Side Force	400 N (90 lbf)
Max Allowable Wind Speed	12.5 m/s (28 mph)
Tire Spec/Type	355/55D625 (Foam-filled)
Power	
Drive × Steer	4WD × 2WS
Engine	43 kW/2500 rpm/ QSF2.8t3NA60/ Cummins/China T3
Hydraulic Tank Capacity	180 L (39.6 gal(UK)/47.6 gal(US))
Diesel Tank Capacity	140 L (30.8 gal(UK)/37 gal(US))
System Voltage	12 VDC
Weight	
Weight	11,900 kg (26,235 lbs)
Standards Compliance	
CE/ANSI/CSA/AS/EAC	



**Auckland, Head Office**  
6-10 Parkway Drive,  
Mairangi Bay,  
Auckland  
(+64) 09 443 2436  
sales@yrco.co.nz

**Auckland, Mt Wellington**  
20L Sylvia Park Road,  
Mt Wellington,  
Auckland  
(+64) 09 553 5470  
salesmtwell@yrco.co.nz

**Waikato**  
3/31 Chafer Place,  
Te Rapa,  
Hamilton  
(+64) 07 595 0245  
saleswaikato@yrco.co.nz

**Wellington**  
8 Broken Hill Road,  
Porirua,  
Wellington  
(+64) 04 212 2456  
saleswell@yrco.co.nz

**Christchurch**  
20 Nga Mahi Road,  
Sockburn,  
Christchurch  
(+64) 03 341 6923  
saleschch@yrco.co.nz