

PRODUCT HIGHLIGHTS**Excellent Rough Terrain Performance**

- Smooth off-road and quiet indoor and outdoor operation
- 4WD, 40% gradeability
- Standard active oscillating function, excellent terrain ability

Optimal Safety and Reliability

- 5 inch smart display for easy machine status and fault diagnosis
- Auxiliary power system, electrical emergency lowering
- Rexroth controller complies with ISO13849 standard
- Both main boom and secondly boom are equipped with dual channel angle sensors

Best Productivity and Easy Maintenance

- Triple load capacity of 250kg/340kg/454kg, max platform occupants up to 3 persons
- Standard AGM maintenance free battery minimizes maintenance cost as well as providing long working endurance
- AC brushless lift motor, maintenance free



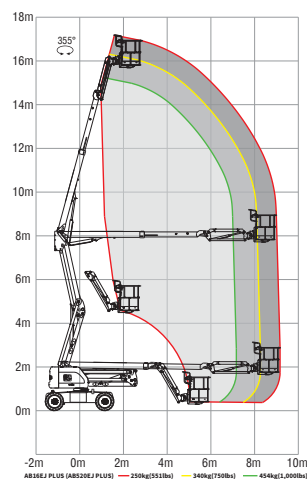
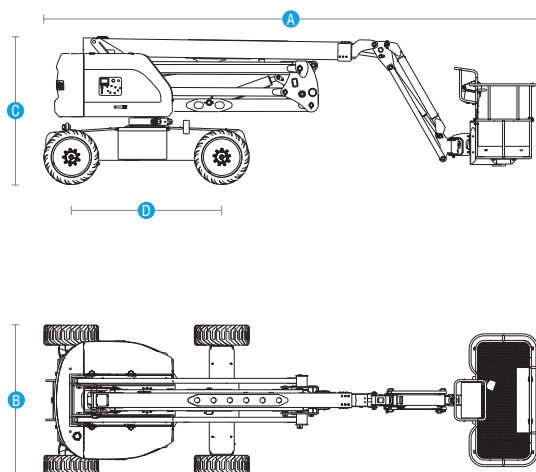
| Standard Features | | |
|--|--|---------------------------|
| Active oscillating function | 5-in display screen | 4WD × 2WS |
| Proportional control | Automotive-grade sleeves for all pipes | Emergency lowering system |
| Hydraulic platform leveling | Max tilt rating to 5° | Weighing system |
| Tilt protection system | Horn & buzzer | Emergency stop system |
| Flashing beacon | Footswitch | Fault diagnosis system |
| Foam-filled non-marking tires | 1.83m(6') platform | Manual storage box |
| Options & Accessories | | |
| AC power to platform | Platform work light | |
| 1.83m(8') platform with swinging gate | | |
| 1.45m (4'9") platform | | |
| Glazier kit(for platform with swinging gate) | | |

ELECTRIC ARTICULATING BOOM LIFTS

AB16EJ PLUS (AB520EJ PLUS)

Compliant with CE/AS/CSA/EAC standards

| Model | AB16EJ Plus (AB520EJ Plus) |
|--|---|
| Dimensions | |
| Max Platform Height | 15.8 m(51'10") |
| Max Working Height | 17.8 m(58'5") |
| Max Horizontal Reach(250kg/340kg/454kg) | 9 m/8.1 m/7 m(29'6"/26'7"/23') |
| Max Up and Over Clearance | 7.9 m(25'11") |
| A Stowed Length | 7.6 m(24'11") |
| B Stowed Width | 2.3 m(7'7") |
| C Stowed Height | 2.25 m(7'5") |
| Stowed Length (Transport) | 6.1 m(20') |
| Stowed Width (Transport) | 2.3 m(7'7") |
| Stowed Height (Transport) | 3.1 m(10'2") |
| D Wheelbase | 2.3 m(7'7") |
| Ground Clearance | 0.37 m(1'3") |
| Platform Dimensions (L×W×H) | 1.83 m × 0.85 m × 1.1 m(6' × 2'9" × 3'7") |
| Performance | |
| Max Platform Capacity (Unrestricted/Restricted/Restricted) | 250 kg/340 kg/454 kg (551 lbs/750 lbs/1000 lbs) |
| Max Platform Occupants (Unrestricted/Restricted) | 2 persons/3 persons |
| Drive Speed (Stowed) | 5.5 km/h (3.4 mph) |
| Drive Speed (Raised) | 1.1 km/h (0.68 mph) |
| Gradeability | 40% |
| Turntable Rotation | 355°/ Non-continuous |
| Platform Rotation | 180° |
| Tilt Rating | 5° |
| Turning Radius (Inside/Outside) | 1.8 m/4.78 (5'11"/15'8") |
| Turntable Tail-Swing | 0.3 m (12") |
| Max Allowable Side Force | 400 N (90 lbf) |
| Max Allowable Wind Speed | 12.5 m/s (28 mph) |
| Tire Spec/Type | 33 × 12 D610 (Foam-filled) |
| Power | |
| Drive × Steer | 4WD × 2WS |
| Batteries | 48 V, 390 Ah (lead acid battery) |
| Hydraulic Tank Capacity | 64 L (14 gal (UK)/17 gal (US)) |
| System Voltage | 12V DC |
| Weight | |
| Weight | 7,750 kg (17,086 lbs) |
| Standards Compliance | |
| CE/AS/CSA/EAC | |



Auckland, Head Office
6-10 Parkway Drive,
Mairangi Bay,
Auckland
(+64) 09 443 2436
sales@yrco.co.nz

Auckland, Mt Wellington
20L Sylvia Park Road,
Mt Wellington,
Auckland
(+64) 09 553 5470
salesmtwell@yrco.co.nz

Waikato
3/31 Chafer Place,
Te Rapa,
Hamilton
(+64) 07 595 0245
saleswaikato@yrco.co.nz

Wellington
8 Broken Hill Road,
Porirua,
Wellington
(+64) 04 212 2456
saleswell@yrco.co.nz

Christchurch
20 Nga Mahi Road,
Sockburn,
Christchurch
(+64) 03 341 6923
saleschch@yrco.co.nz

4C+
CELEBRATING
OVER 40 YEARS
IN BUSINESS

**YR Youngman
Richardson**