

ENGINE POWERED ARTICULATING BOOM LIFTS

AB26J PLUS (AB850J PLUS)

Compliant with CE/EAC/AS standards



PRODUCT HIGHLIGHTS

Leading Platform Height

- 25.65 m (84'2") platform height, higher than most other brands in this range

Leading Horizontal Outreach

- 19.1 m (62'8") maximum horizontal outreach, longer than most other brands in this range

Increased Platform Capacity

- Update the platform capacity from 230kg to 230kg/340 kg(unrestricted/restricted)

Active Oscillating Function

- allow oscillating at both stowed and raised positions

4WS With 4 Steering Modes

- Convenience for driving on the narrow job site

Transport in Container

- The new boom structure design allows driving into containers for transportation

Safer Boom Movement Interlock

- The telescopic and lifting of the secondary boom are hydraulic and electric dual interlocked



Standard Features		
Electric platform leveling	180°platform rotation	Active oscillating function
Automotive sleeves for all pipes	Four-wheel brake	Max allowable tilt angle at 5°
Flashing beacon	Weighing system	4WD x 4WS
Tilt protection system	Emergency lowering system	Fault diagnosis system
Emergency stop system	Horn and buzzer	Motion alarm
Mechanical release for travel braking	7-in smart screen	Rear position and travel confirmation
Manual storage box	Foot switch	360° continuous turntable rotation
Foam-filled tires	2.44m side entry swing gate	Proportional control with 3 joysticks
Telematics-ready connector	Secondary guarding device	AC power cable to the platform
Drive into container for transport	Tool box	
Options & Accessories		
AC power socket on platform	Solid tires	Non-marking Foam filled tires
Half-mesh(for platform with side entry swing gate)	2WS	Hydraulic generator
Platform work light	Overhead anti-collision device	Anti-finger pinch device
Glass bracket(for platform with side entry swing gate)		

SINOBOOM™

PARTNERS IN ACCESS™

SINOBOOM.COM | SALES@SINOBOOM.COM

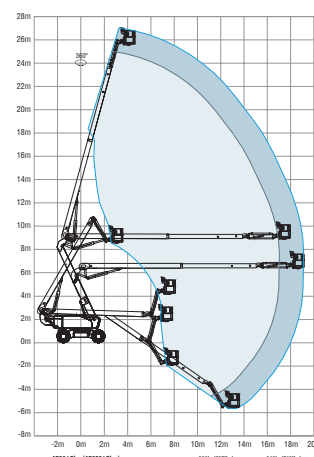
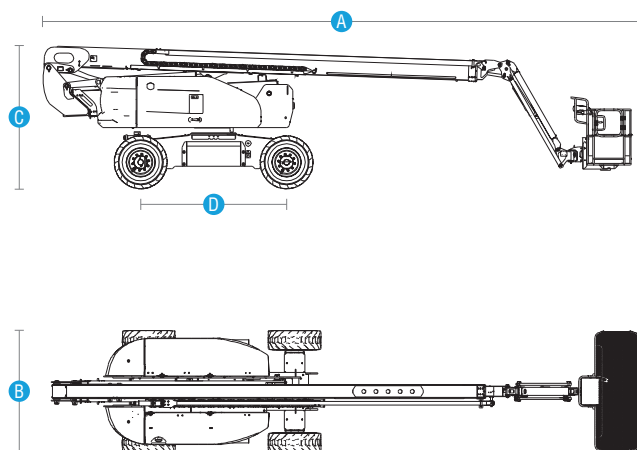
NO.128 EAST JINZHOU AV., NINGXIANG HI-TECH INDUSTRY PARK, CHANGSHA, HUNAN, CHINA, 410600

ENGINE POWERED ARTICULATING BOOM LIFTS

AB26J PLUS (AB850J PLUS)

Compliant with CE/EAC/AS standards

Model	AB26J Plus (AB850J Plus)
Dimensions	
Max Platform Height	25.65 m (84'2")
Max Working Height	27.65 m (90'9")
Max Horizontal Outreach (230kg/340kg)	19.1 m /17.0 m (62'8"/55'9")
Max Up and Over Clearance	9.07 m (29'9")
A Stowed Length	12.09 m (39'8")
B Machine Width	2.49 m (8'2")
C Stowed Height	2.93 m (9'7")
Stowed Length (Transport)	9.49 m (31'2")
Stowed Height (Transport)	3.28 m (10'9")
D Wheelbase	3.0 m (9'10")
Ground Clearance	0.46 m (1'6")
Platform Size (L×W×H)	2.44 m x 0.91 m x 1.1 m (8' x 3' x 3'7")
Performance	
Max Platform Capacity (Unrestricted/Restricted)	230 kg/340 kg (507 lbs/749 lbs)
Max Platform Occupants	2 Persons
Drive Speed (Stowed)	0~4.8 km/h (0~3.0 mph)
Drive Speed (Raised)	0~1.1 km/h (0~0.7 mph)
Gradeability	45%
Turntable Rotation	360°/Continuous
Platform Rotation	180°
Tilt Rating	5°
Turning Radius(Inside/Outside)	3.65 m/6.91 m (11'12"/ 22'8")(Two-wheel steering) 2.25 m/4.60 m (7'5"/ 15'1")(Four-wheel steering)
Turntable Tail-swing	1.13 m (3'8")
Max Allowable Side Force	400 N (90 lbf)
Max Allowable Wind Speed	12.5 m/s (28 mph)
Tire Spec/Type	385/65-22.5 /foam-filled
Power	
Drive × Steer	4WD×4WS (2WS optional)
Engine	43 kW/2500 rpm/QSF2.8T3NA60 / Cummins /China T3/EU Stage 3A 36.5 kW/2200 rpm/YCF3050 / Yuchai /China T3
Hydraulic Tank Capacity	180 L (39.6 gal(UK)/47.6 gal(US))
Diesel Tank Capacity	150 L (33.0 gal(UK)/39.6 gal(US))
System Voltage	12 V DC
Weight	
Weight	18,640kg (41,094 lbs)(Two-wheel steering) 18,760kg (41,358 lbs)(Four-wheel steering)
Standards Compliance	CE/EAC



Auckland, Head Office
6-10 Parkway Drive,
Mairangi Bay,
Auckland
(+64) 09 443 2436
sales@yrco.co.nz

Auckland, Mt Wellington
20L Sylvia Park Road,
Mt Wellington,
Auckland
(+64) 09 553 5470
salesmtwell@yrco.co.nz

Waikato
3/31 Chafer Place,
Te Rapa,
Hamilton
(+64) 07 595 0245
saleswaikato@yrco.co.nz

Wellington
8 Broken Hill Road,
Porirua,
Wellington
(+64) 04 212 2456
saleswell@yrco.co.nz

Christchurch
20 Nga Mahi Road,
Sockburn,
Christchurch
(+64) 03 341 6923
saleschch@yrco.co.nz

4C+
CELEBRATING
OVER 40 YEARS
IN BUSINESS

**YR Youngman
Richardson**