

CRAWLER ACCESS PLATFORMS

IM R 15 DA LITHIUM

15 m
working height



STANDARD EQUIPMENT

- Automatic outriggers levelling with electronic inclinometer
- Outrigger pads (Ø 200 mm)
- Emergency hand pump
- Cylinder holding valve
- Electronic hour meter
- Load cell
- Hydraulic Jib
- Rubber tracks
- Hydraulically adjustable tracks width
- Air / Water outlet in the platform
- 230V - 16 A outlet in the platform
- Removable wired control box (5 m cable)
- Lithium batteries 48V / 120Ah
- Electric motor 48V / 4 kW AC low voltage

OPTIONALS

- 48V emergency electro-pump
- Double speed traction
- Non-marking rubber tracks
- Oversized outrigger pads (Ø 350 mm)
- Wireless radio-control box
- Working light in the platform
- Aluminium basket (0.90 x 0.70 x 1.10 m)
- Kit IMERVIEW



BENEFITS

- ✓ Lithium batteries and AC electric motor for high performance.
- ✓ Possibility to operate from the power network and simultaneously charge the battery.
- ✓ Double articulation boom with active jib for a high operability in all construction site conditions.
- ✓ Hydraulically adjustable tracks width: more stability and traction to move around the building site or rough terrain.
- ✓ State-of-the-art removable control panel: fast and versatile use of the machine.
- ✓ Proportional and simultaneous electro-hydraulic controls: efficiency and safety for operators.
- ✓ Automatic outriggers levelling: maximum easiness of use and safety.
- ✓ Permanent weight control device for improved safety and performance.
- ✓ Slewing 360° (not continuous): outstanding aerial accessibility in any work situation.
- ✓ Basket rotation $\pm 62^\circ$: complete placement on working site in any condition.
- ✓ Compact size, with limited overall outrigger footprint.
- ✓ Engine guarded for safety and working protection.
- ✓ Aluminium basket 1.40 x 0.70 x 1.10 m.
- ✓ Innovative design with fully enclosed structure.



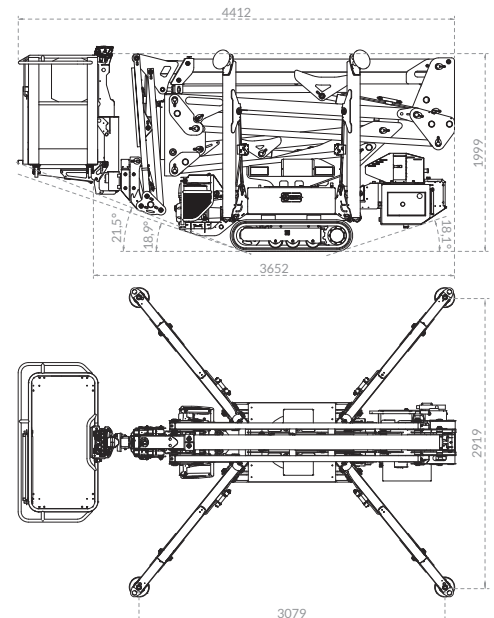
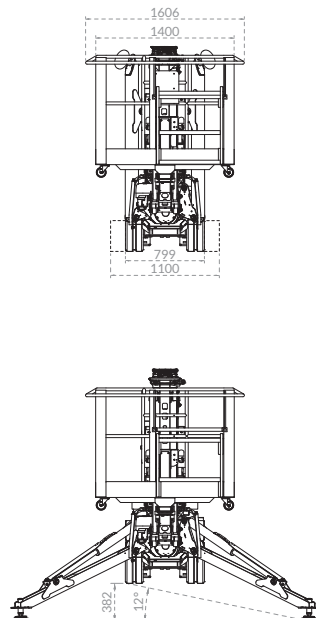
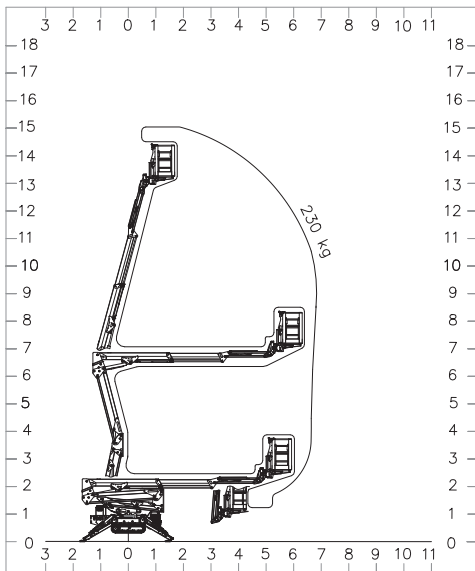
Compact jib group with load cell and basket rotation system.



Ground control panel for ground and maintenance operations.



Lithium batteries compartment: protected and easily accessible for the charging cycle management. LCD display for charging status and remaining battery time.



| IM R 15 DA Lithium | | |
|--|---------------------------|--------------------|
| Working height | m | 15.1 |
| Platform height | m | 13.1 |
| Side outreach | m/kg | 7.00 / 230 |
| Up & Over | m | 7 |
| Slewing (not continuous) | (°) | 360 |
| Basket dimensions | m | 1.40 x 0.70 x 1.10 |
| Overall outrigger footprint | m | 2.92 x 3.08 |
| Driving speed | km/h | 2.4 |
| Gradeability | (°) | 17.5 |
| Platform capacity | kg | 230 |
| Electric motor | 48V / 4 kW AC low voltage | |
| Lithium batteries | 48V / 120Ah | |
| Lithium batteries charger | 50A / 48V | |
| Transport length (without basket) | m | 4.40 (3.65) |
| Transport width (with extended tracks) | m | 0.79 (1.10) |
| Stowed height (with outrigger pads) | m | 1.99 (2.10) |
| Total weight of the machine | kg | 2065 |



Compact dimensions for maximum accessibility into any work environment.